



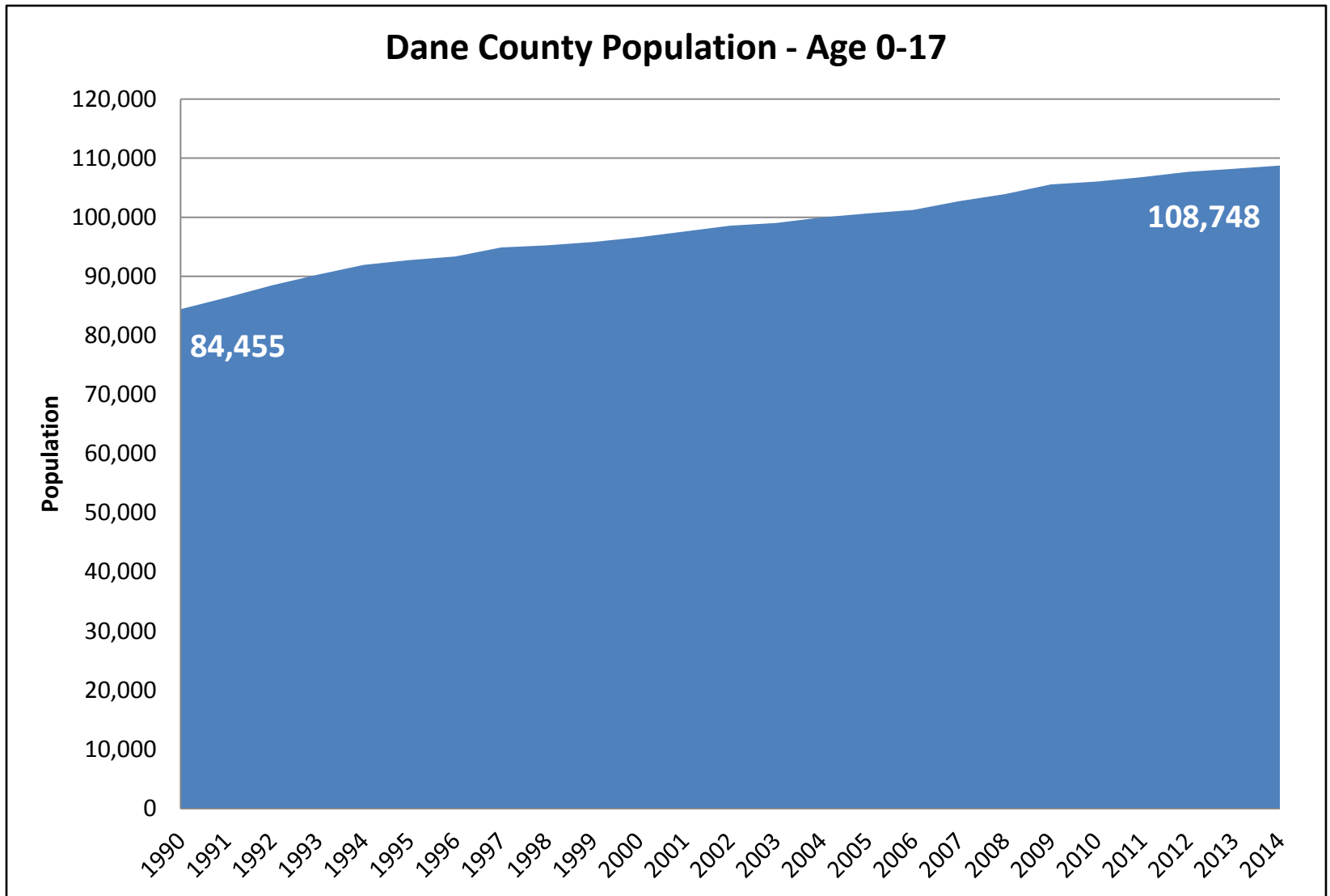
Racial Disparities in Dane County and in the Children Youth and Families Division

Ariel Barak

DCDHS Program Analyst

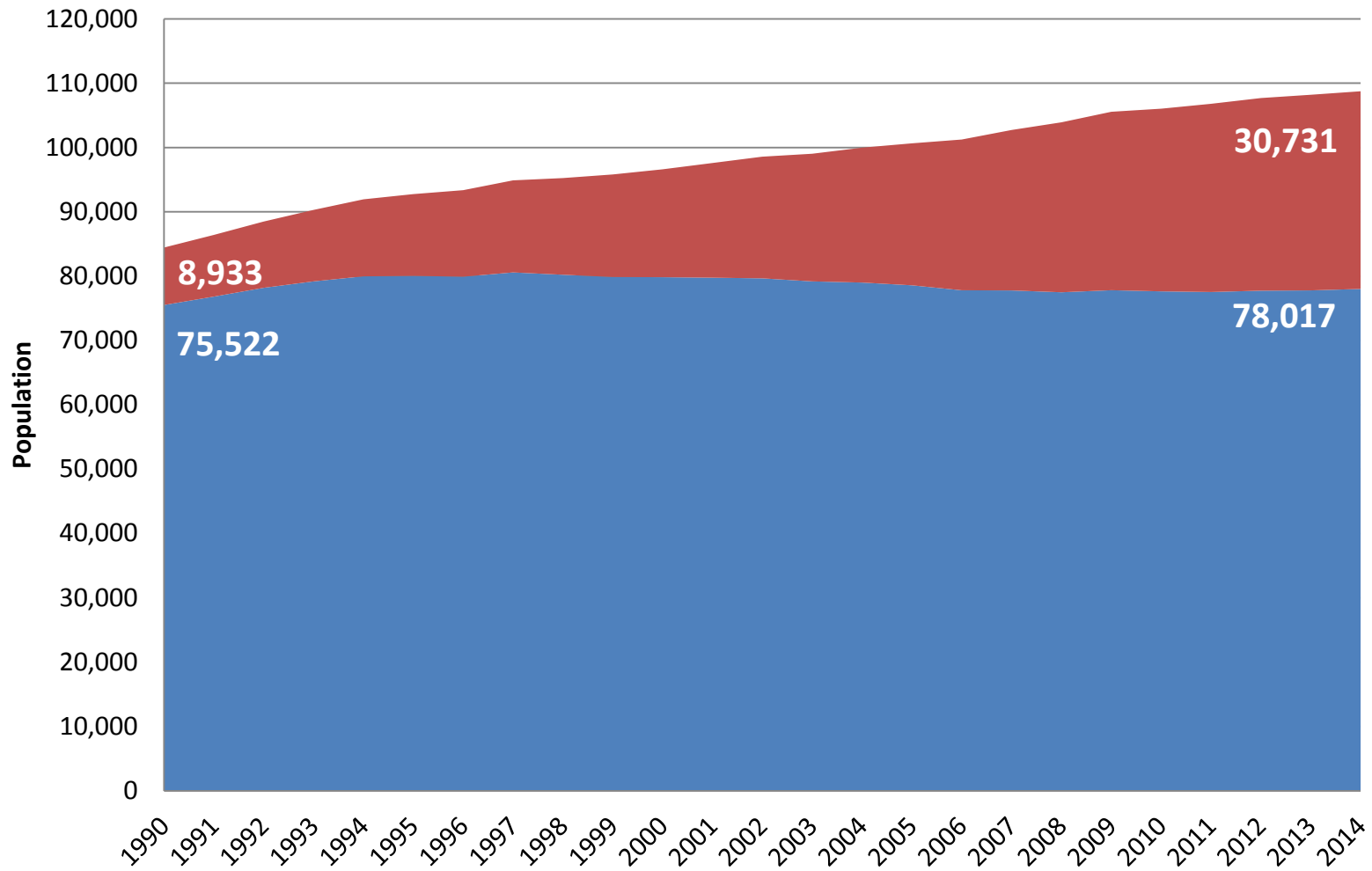
2016.08.05

Demographics



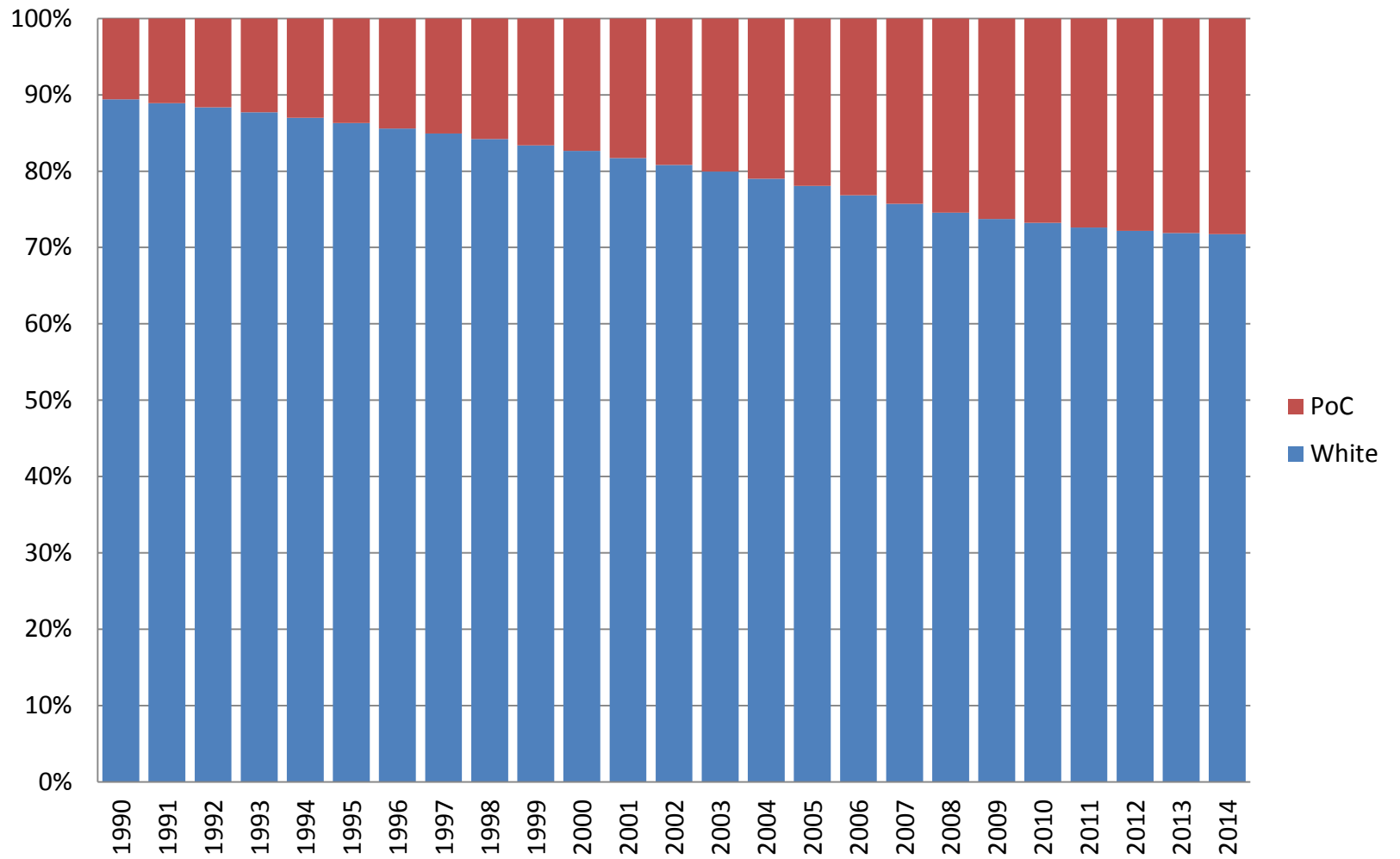
Demographics

Dane County - White vs. Persons of Color, Age 0-17



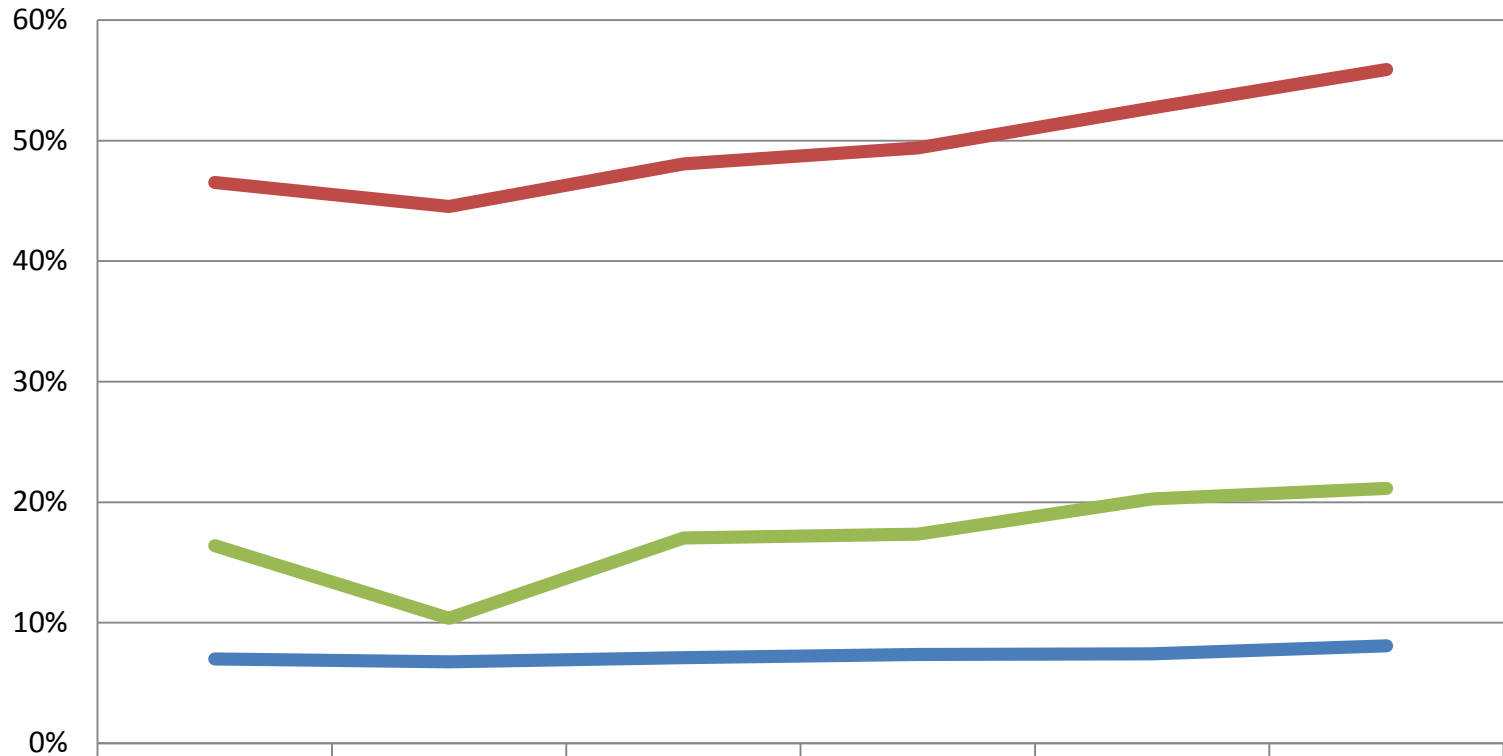
Demographics

Dane County - White vs. Persons of Color, Age 0-17



Demographics

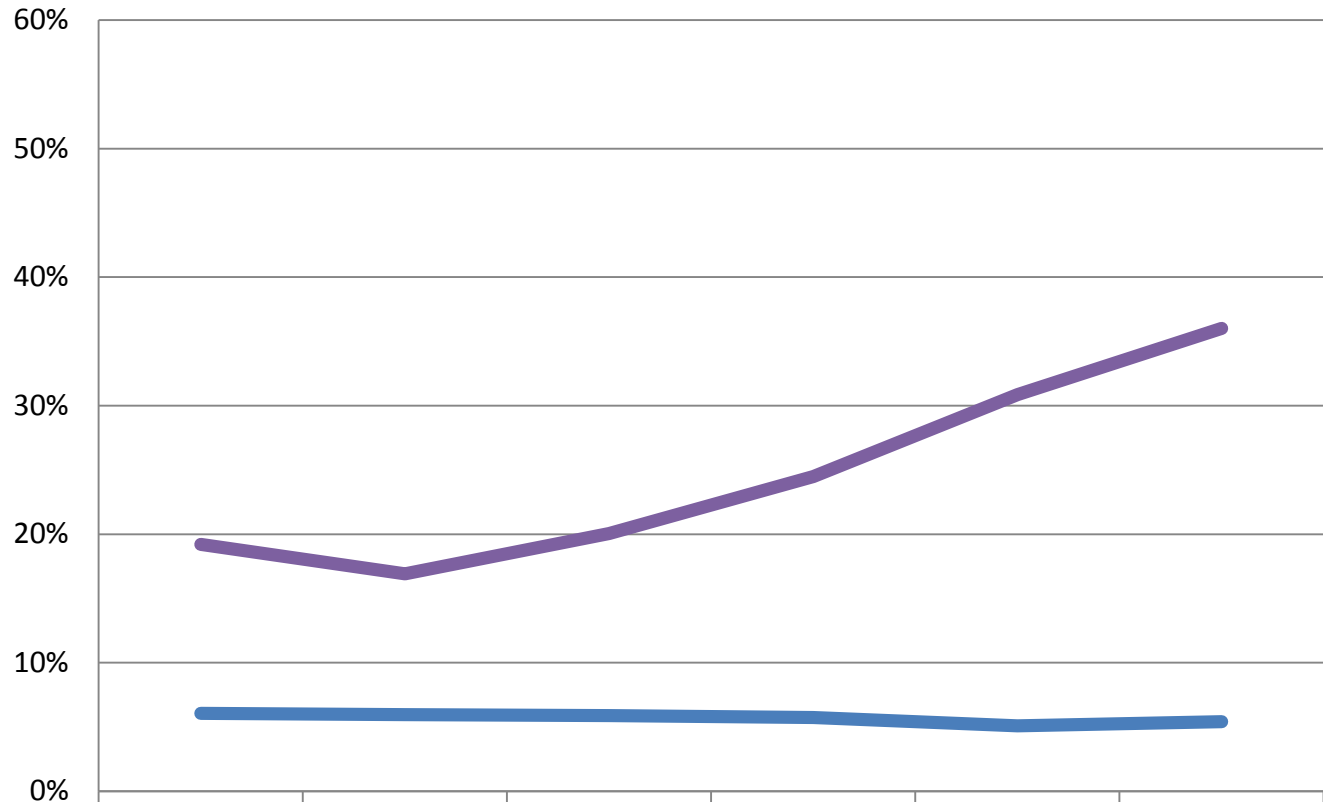
**ACS - B17001 - Percent at or below Poverty Status
within the last 12 months by Race - Age 0-17**



	2009	2010	2011	2012	2013	2014
Black	46.5%	44.5%	48.1%	49.4%	52.7%	55.9%
Asian	16.4%	10.4%	17.0%	17.3%	20.3%	21.1%
White	7.0%	6.7%	7.1%	7.4%	7.4%	8.1%

Demographics

**ACS - B17001 - Percent at or below Poverty Status
within the last 12 months by Ethnicity - Age 0-17**



White Non-Hispanic

Hispanic

2009

2010

2011

2012

2013

2014

6.1%

6.0%

5.9%

5.8%

5.1%

5.4%

19.2%

16.9%

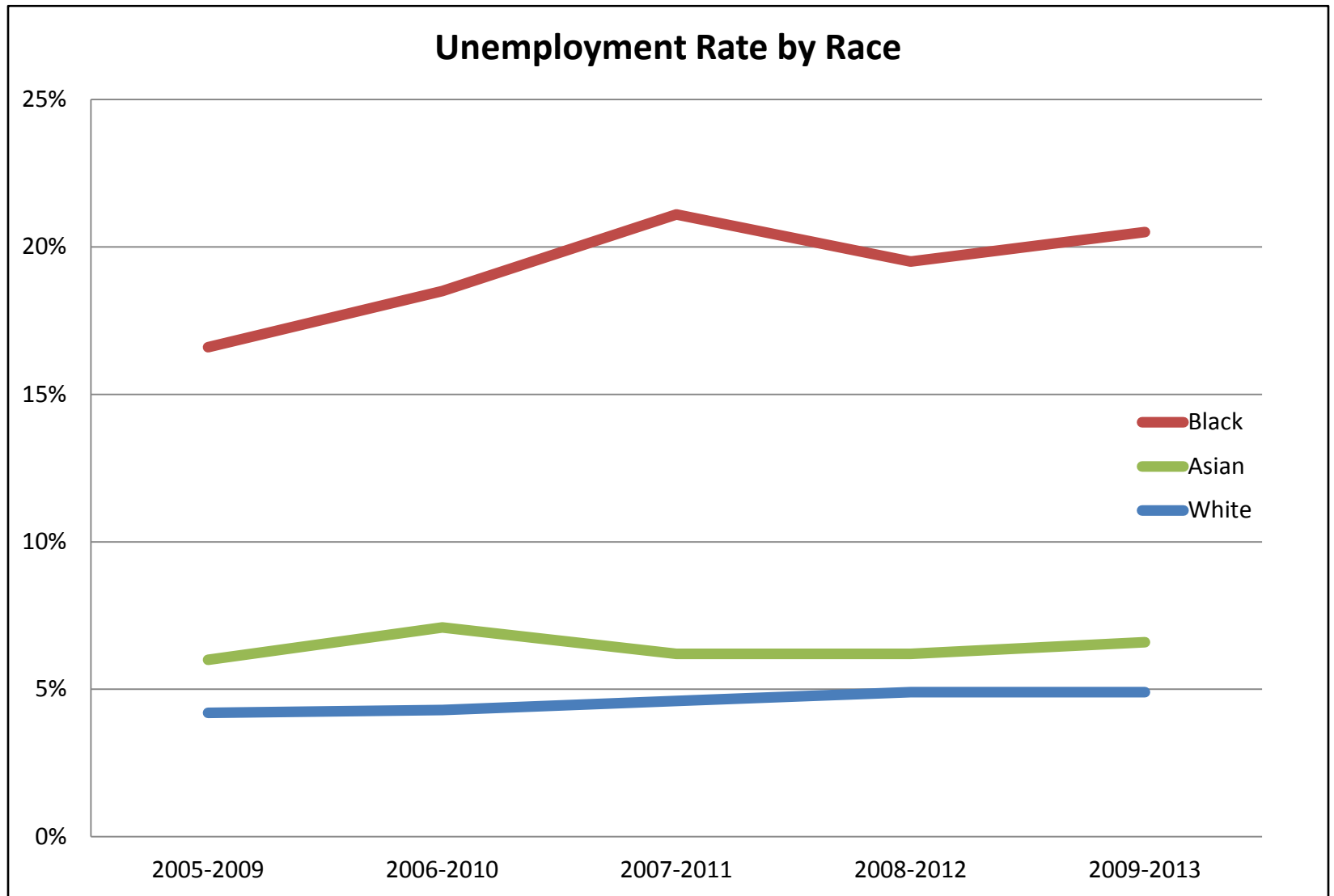
20.0%

24.5%

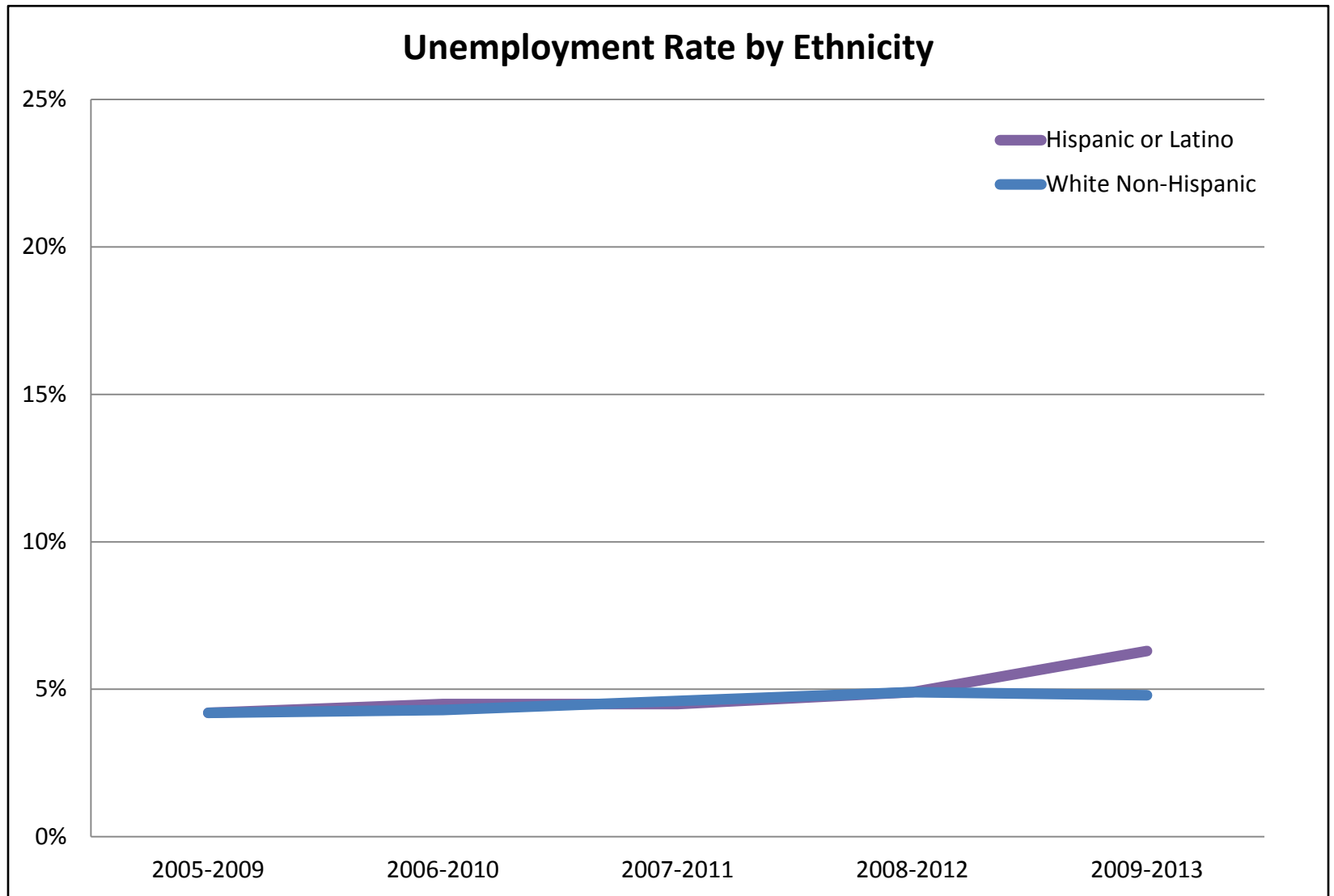
30.8%

36.0%

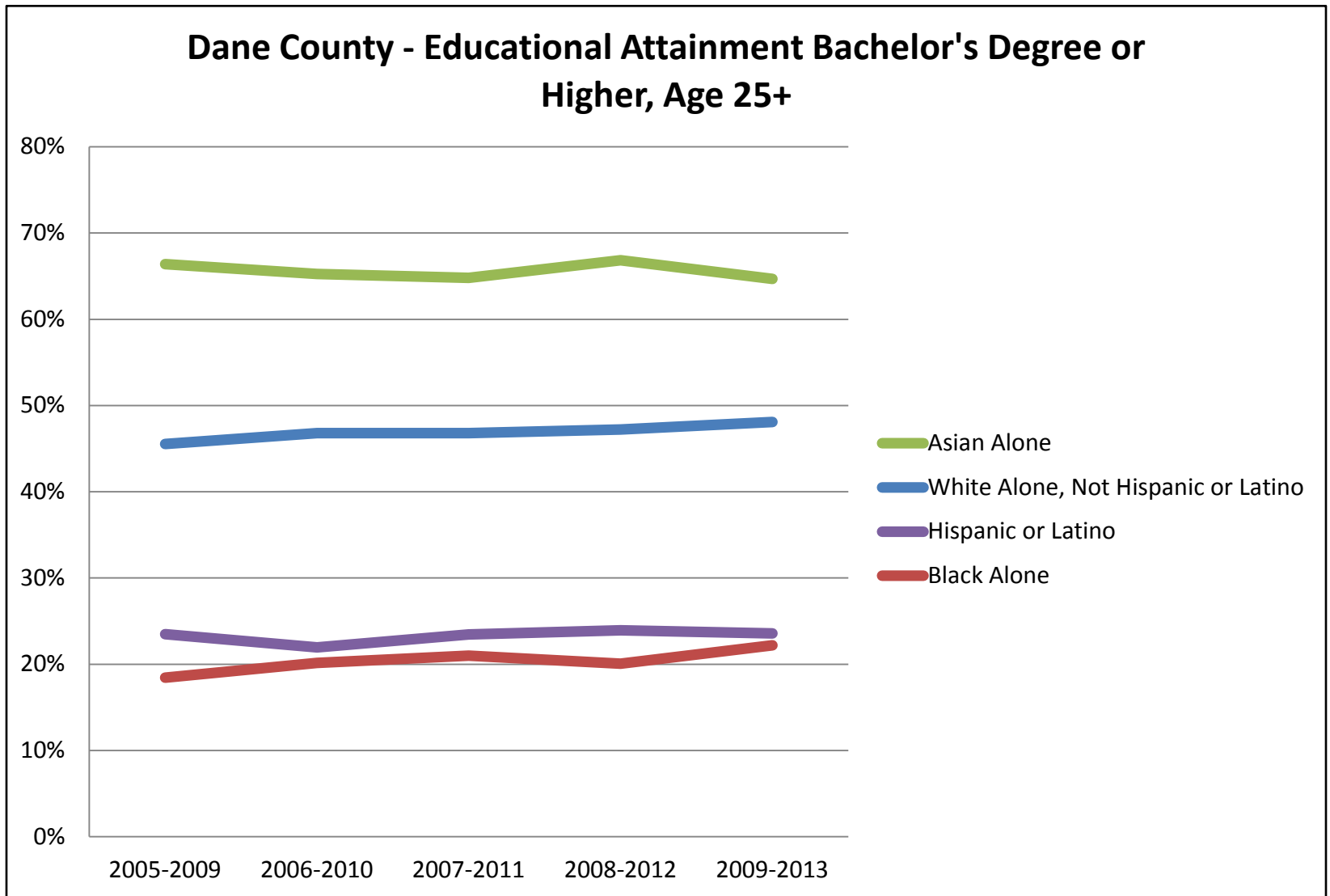
Demographics



Demographics

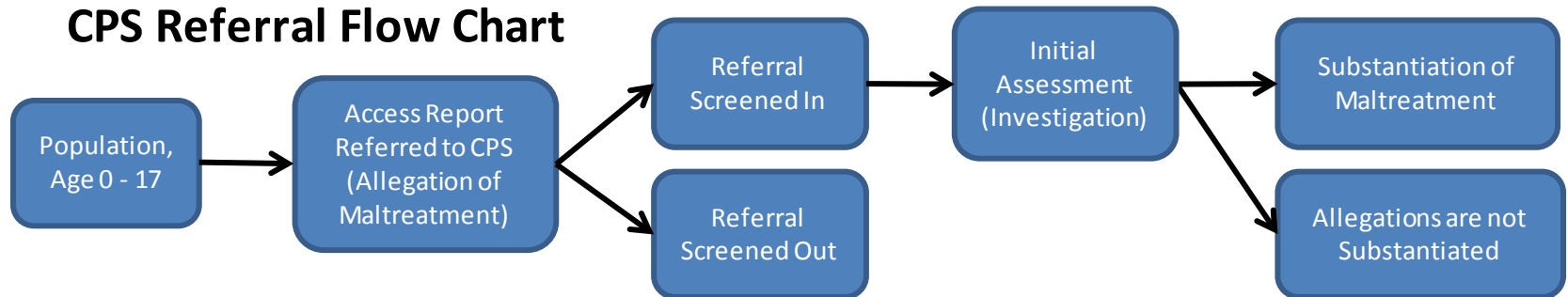


Demographics

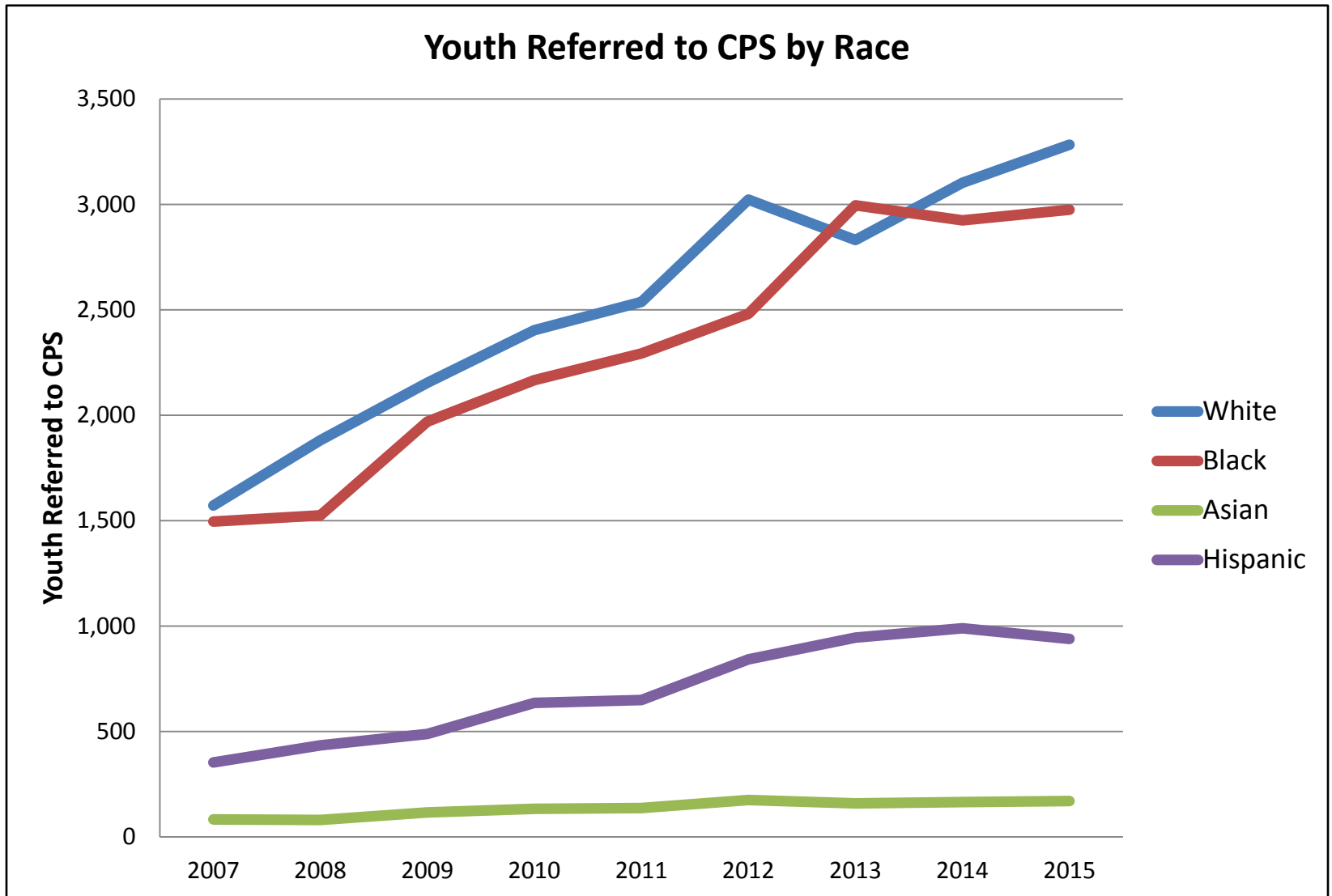


Child Protective Services

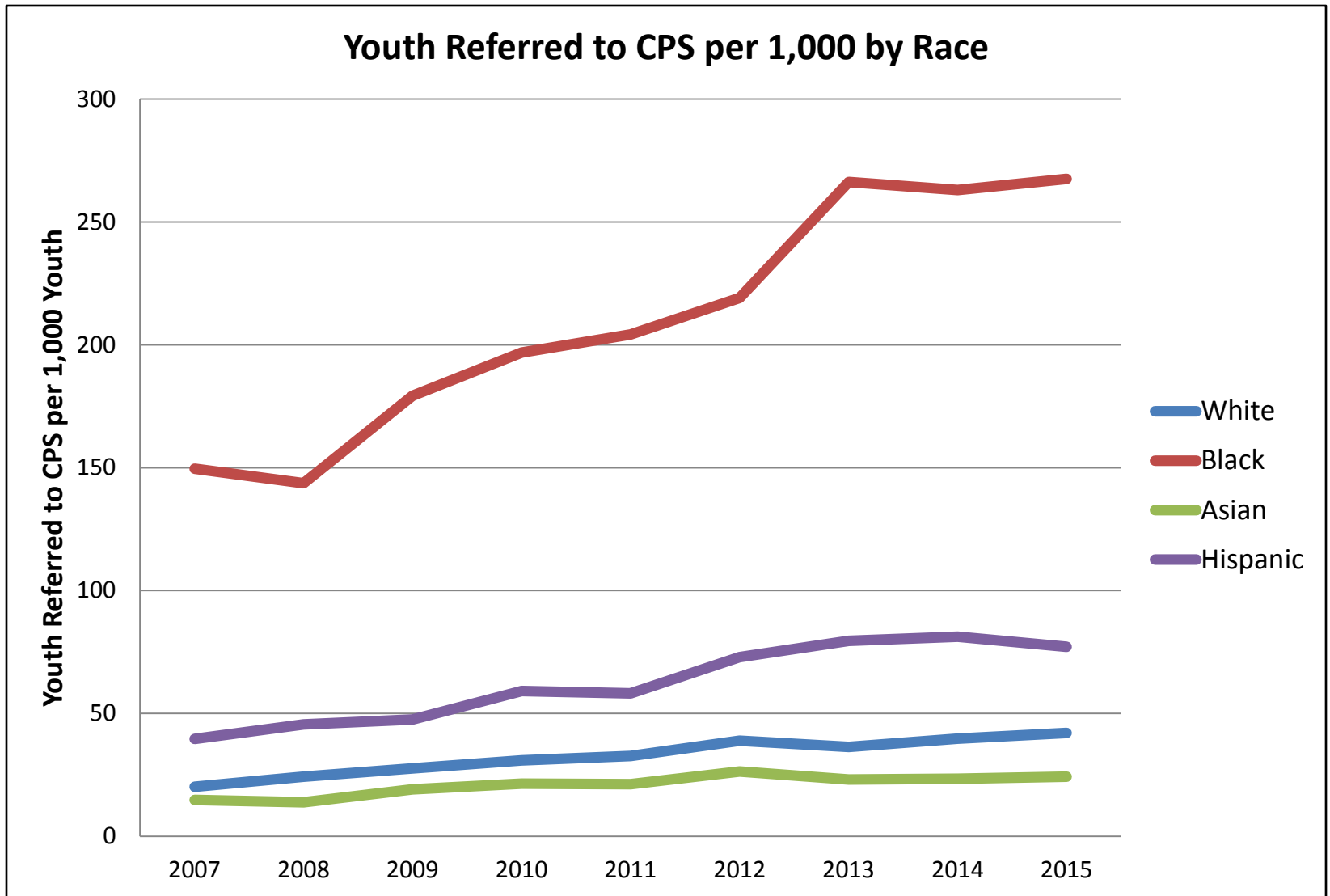
CPS Referral Flow Chart



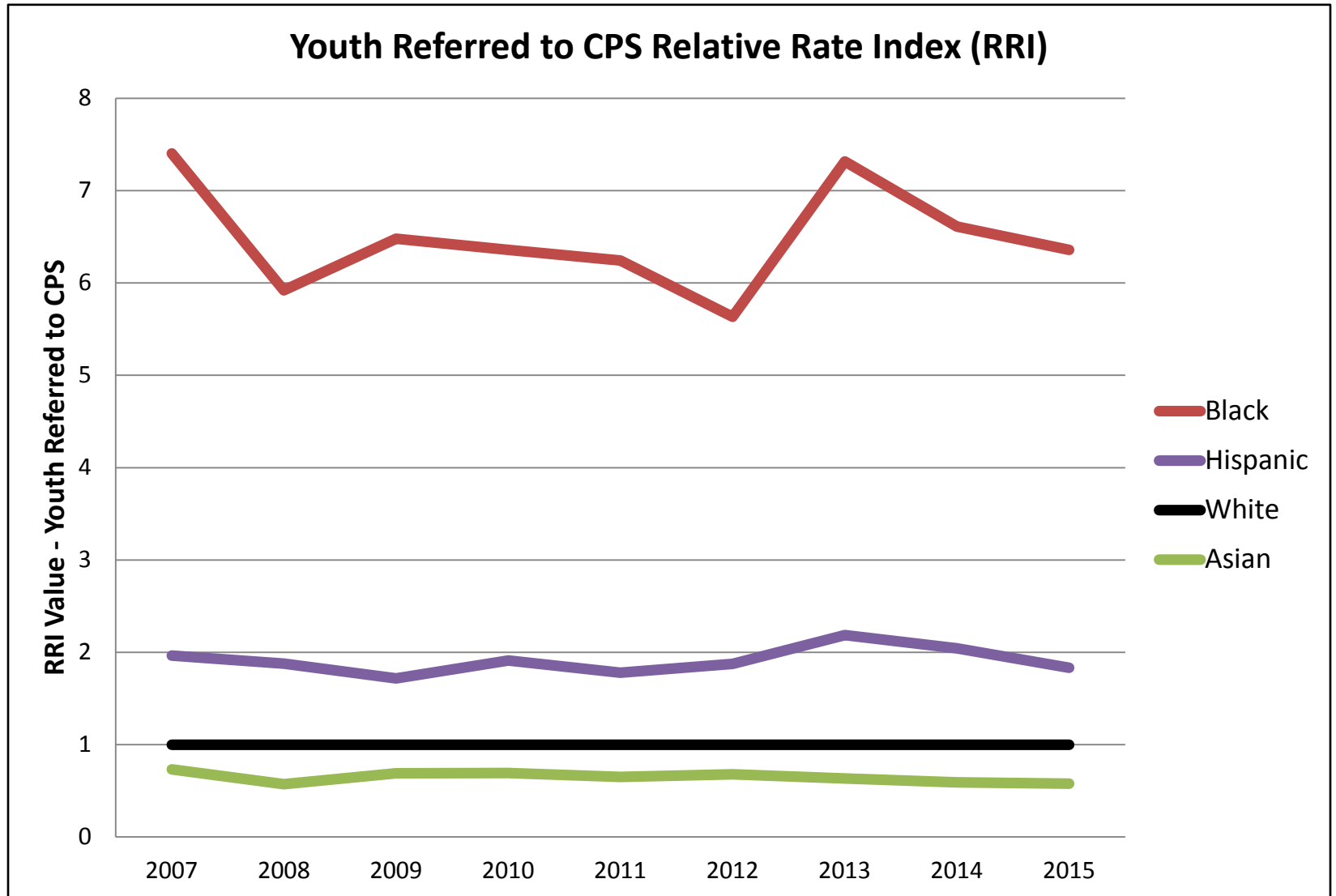
Child Protective Services



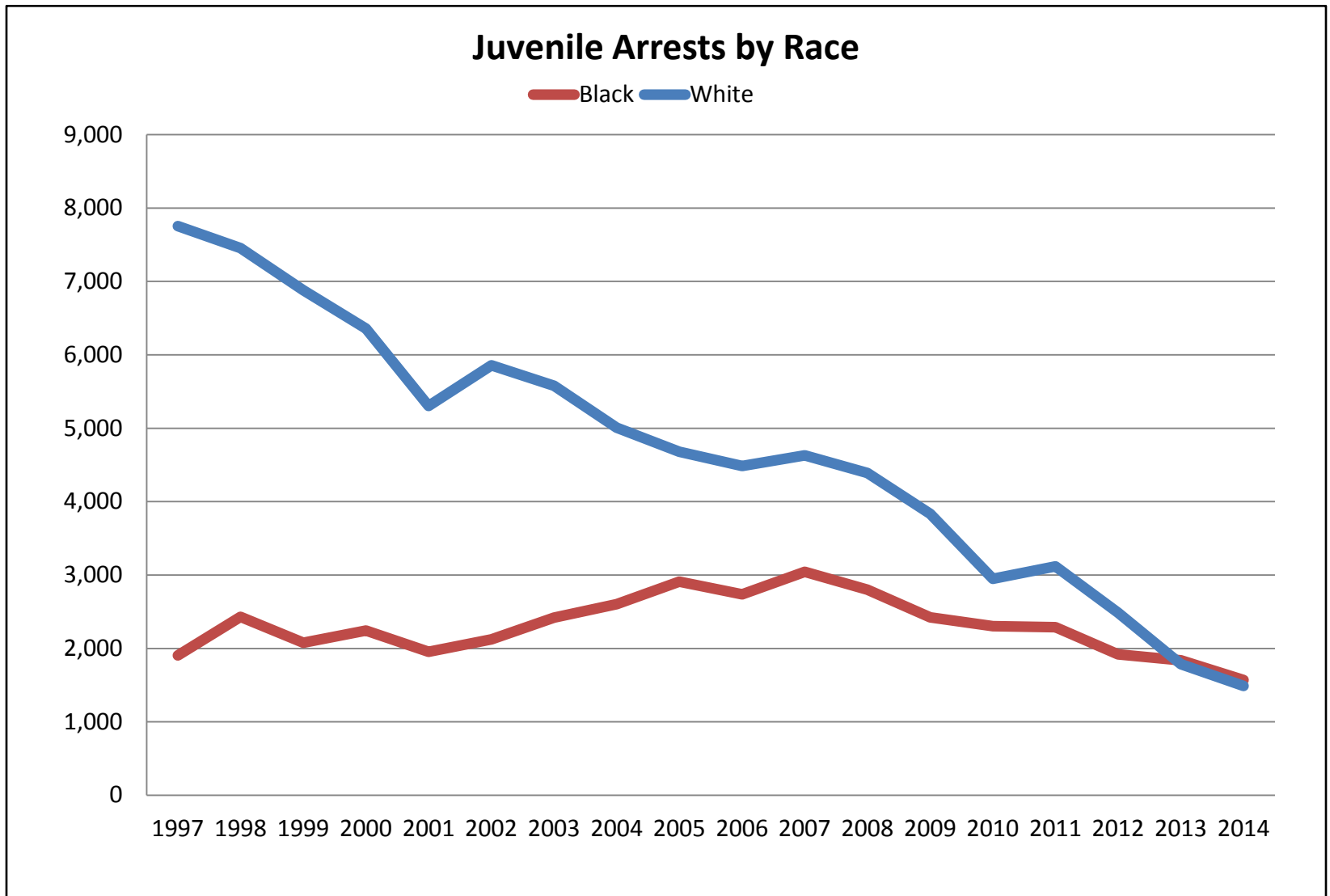
Child Protective Services



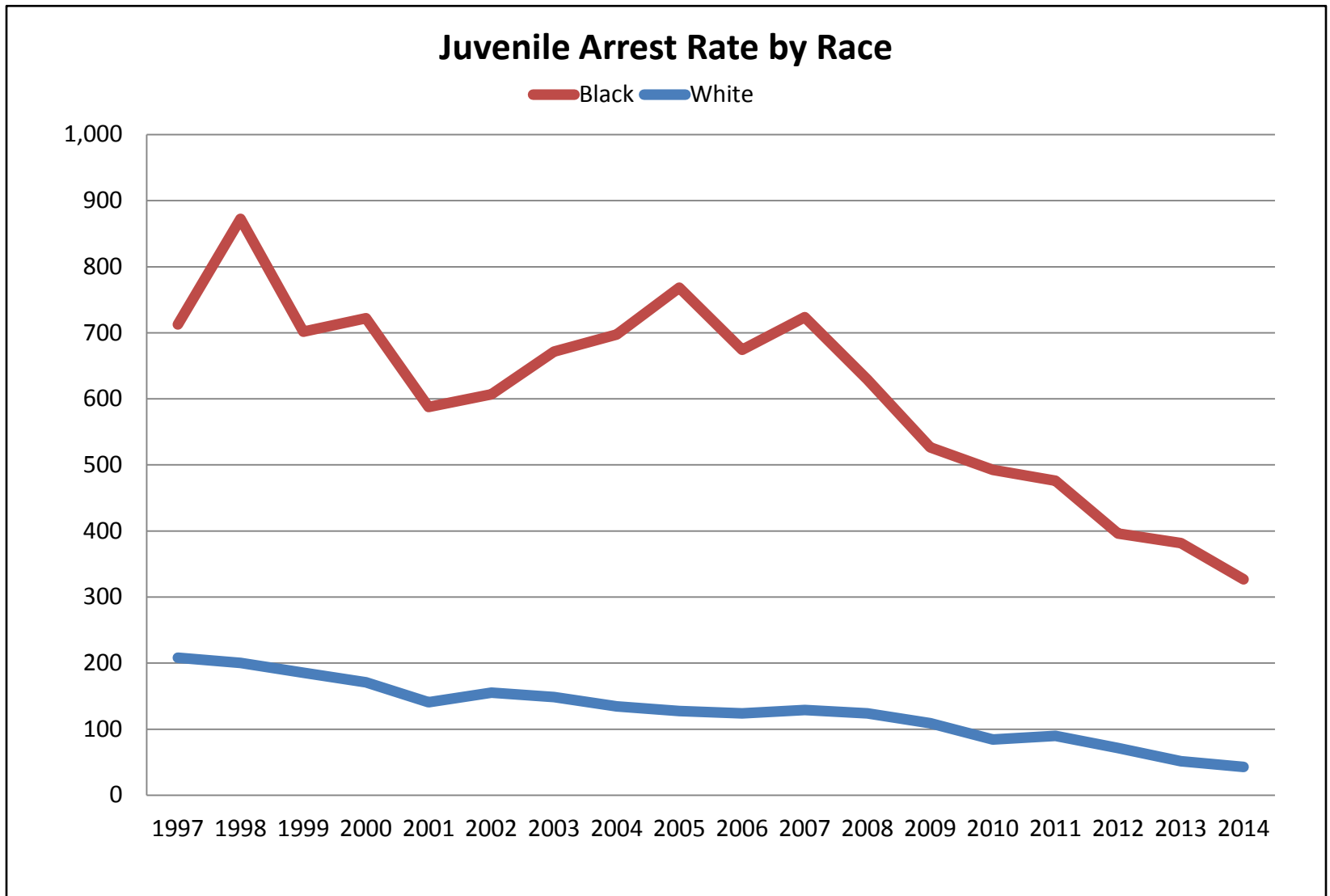
Child Protective Services



Juvenile Justice

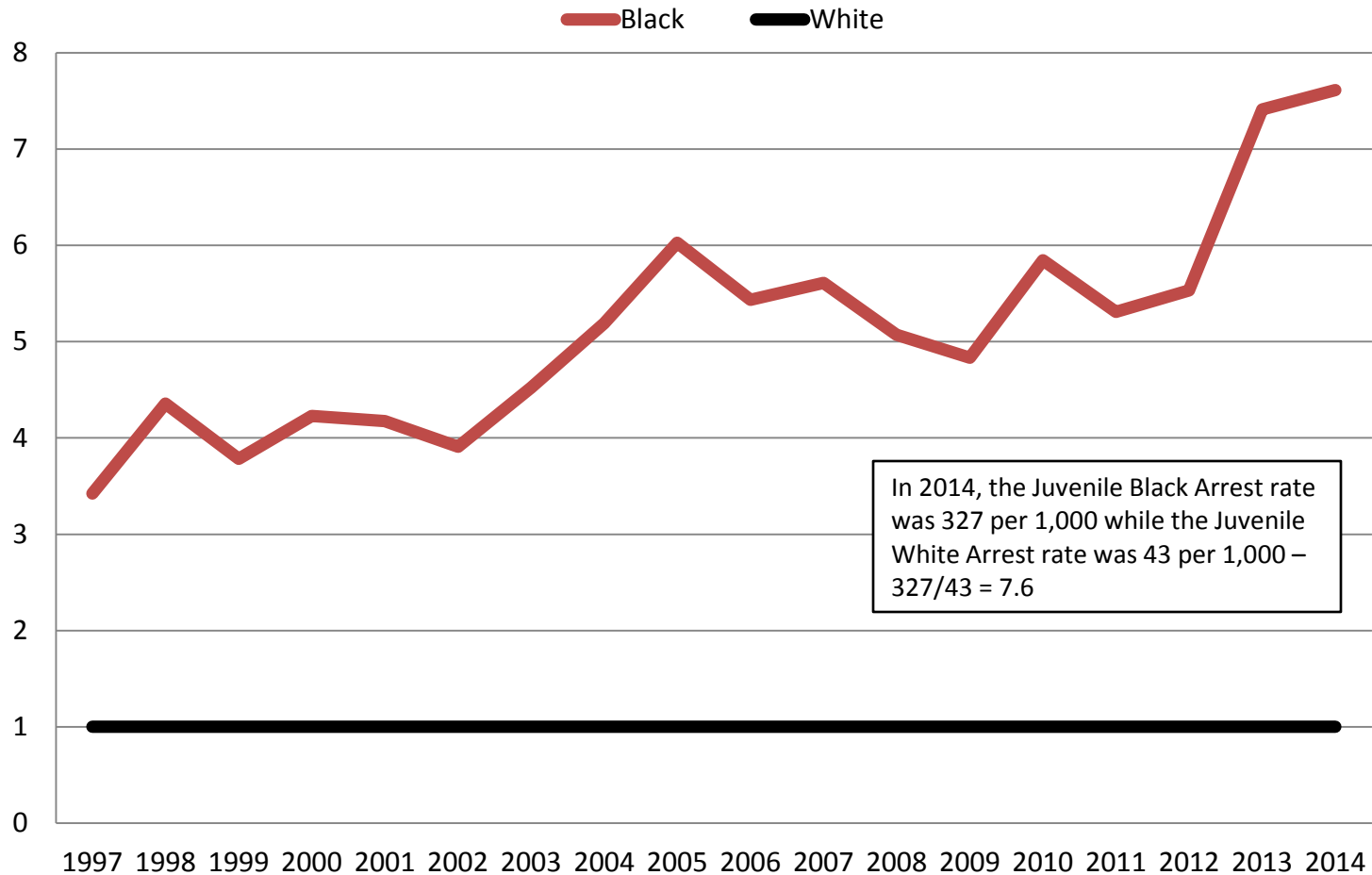


Juvenile Justice



Juvenile Justice

Juvenile Arrests - Relative Rate Index (RRI)



Lots of Data from the 2016-2020
Human Services Strategic Plan can be
found here:

https://www.danecountyhumanservices.org/strat_plan/2016-2020/data.aspx

or

<http://tinyurl.com/DaneData>