

Village of Cottage Grove

Plat consists of 72 lots, 36.4 acres.

Parks - OL 2

Parkways - Nine Mound Rd. directly to the west.

Expressways - N/A

Major Highways - CTH BB (Cottage Grove Rd.)

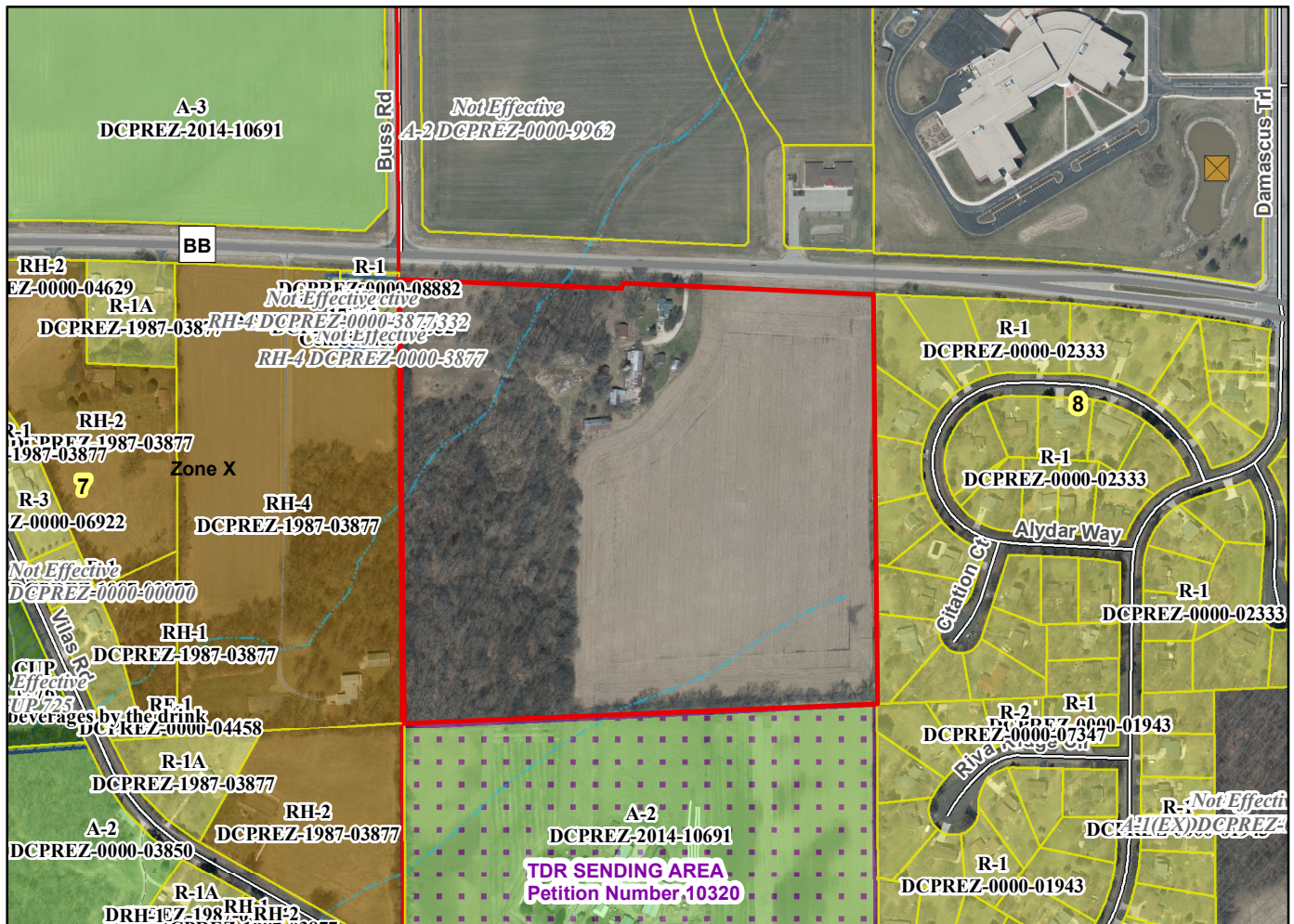
Airports - Dane County Regional

Drainage Channels - None shown.

Schools - established.

Other Development - OL 1 & 3 dedicated to the village for storm water management.

Plats of subdivisions located in all other incorporated municipalities shall be submitted to the committee, as provided by section 236.12(2)(b) of the Wis. Stats., for the purpose of determining whether the committee has any objection to the plat. The basis for any objection to any such plat shall be that the plat conflicts with parks, parkways, expressways, major highways, airports, drainage channels, schools or other planned public developments.



Motion to certify with no objections: _____, **Second:** _____ **Vote:** _____