



# Dane County Youth Assessment

Program Overview & 2015 Summary

[Presentation Group/Location]

[Date]

## What is it?

The Dane County Youth Assessment (DCYA) is a comprehensive youth survey. Since 1980, the Dane County Youth Commission has coordinated an effort to survey middle and high school youth to collect data and “youth voice” on health, school, risk and positive behavioral trends.



# What is the Dane County Youth Assessment?

## A Collaborative Effort

- ▶ Project partners include Dane County school districts and...



United Way  
of Dane County



# Why survey youth?

Administered regularly every three years to **7<sup>th</sup>-12<sup>th</sup> graders** in Dane County, the DCYA provides:

- ✓ A “snap-shot” of the risk-health status of youth
- ✓ A platform to gather “youth voice” on the issues impacting their lives
- ✓ Trend data over time
- ✓ A comprehensive, multi-domain data set to inform practice, policy and community decisions

# How is DCYA developed and administered?

Collaboratively! Partner organizations, K12 Associates, school representatives and community members **provide oversight and input through a Steering Committee to....**

- ▶ Review and revise the survey tool
  - ▶ Oversee the survey administration process
  - ▶ Review and publish DCYA data reports
- 
- Steering Committee meetings are publically posted.
  - The **most recent** Youth Assessment was in 2015
  - Planning for the 2018 DCYA is underway

# 2015 DCYA Overview

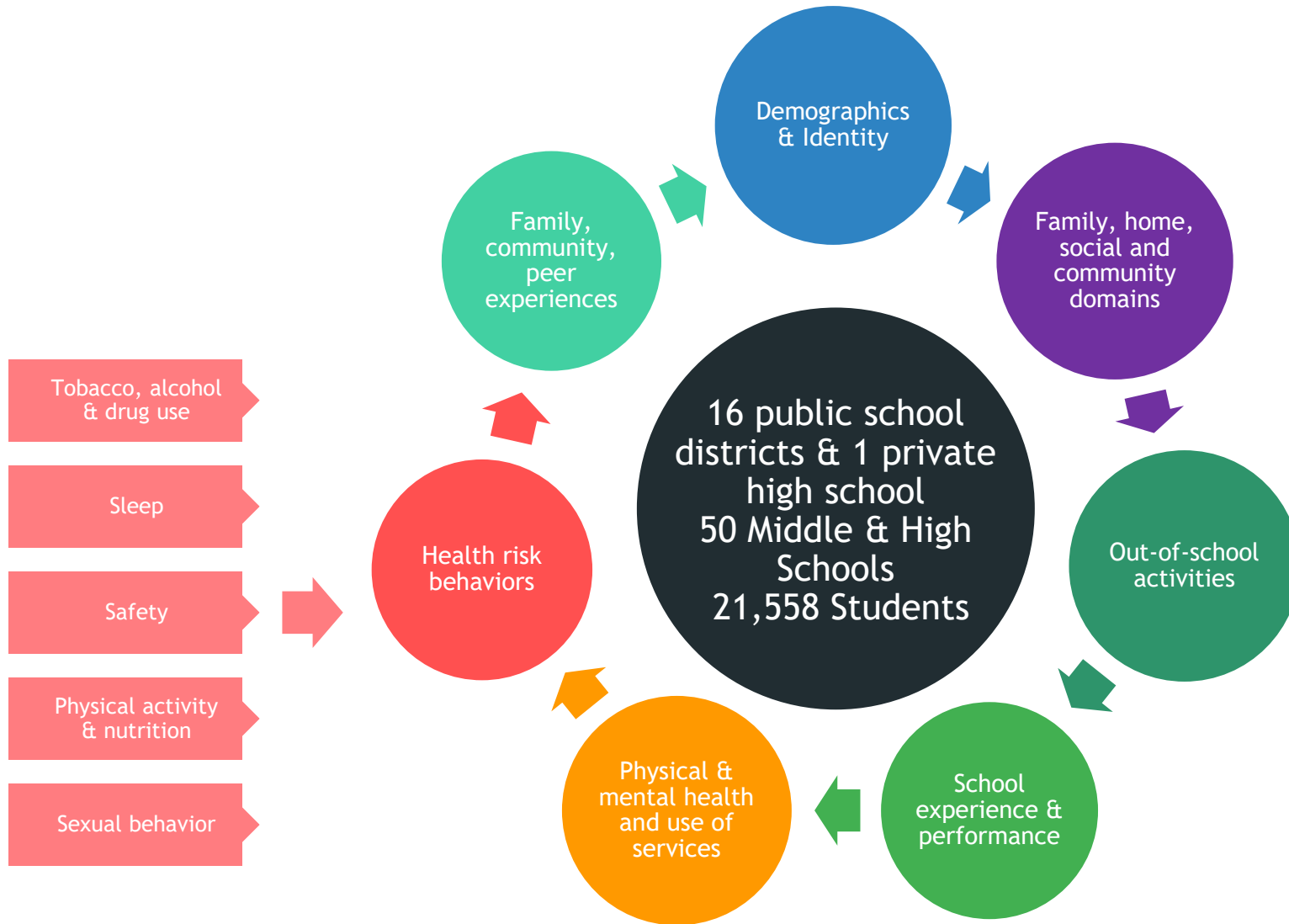
- ▶ Administered between January and March 2015
- ▶ 16 public school districts and one private high school participated
- ▶ Parents/guardians provide passive consent and may opt their child out of participating
- ▶ Copies of the survey are made available at participating schools for parent/guardian preview prior to administration

## What else?

- ▶ Administered through a secure, on-line platform—all responses are confidential
- ▶ **90% participation** in all school districts except the Madison Metropolitan School District, which utilizes a **sampling strategy**
- ▶ Survey data is valid and reliable
- ▶ Survey data is consistent with national trends



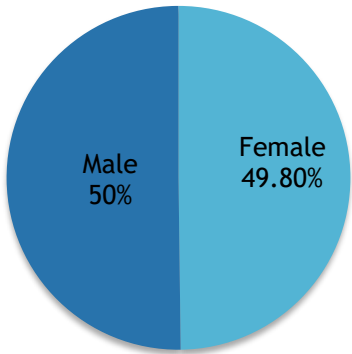
# What is asked?



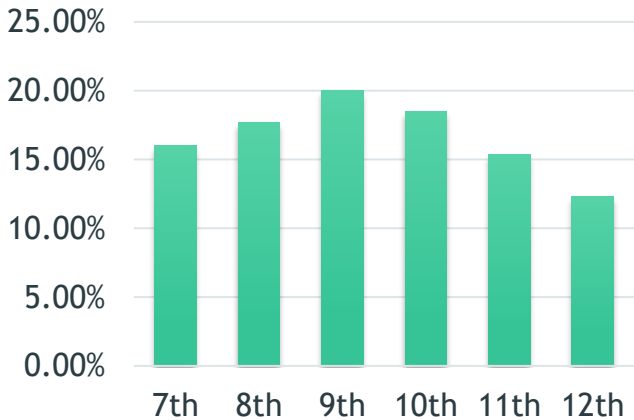


# 2015 DYCA Participant Demographics

Gender

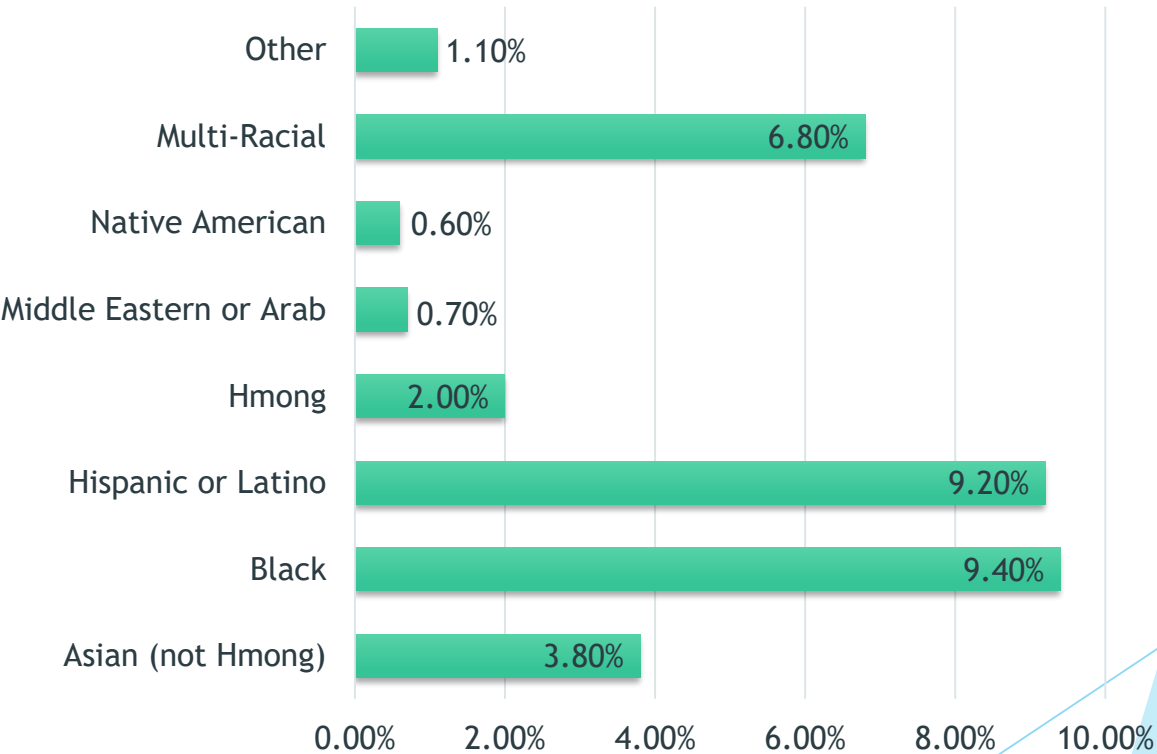


Grade



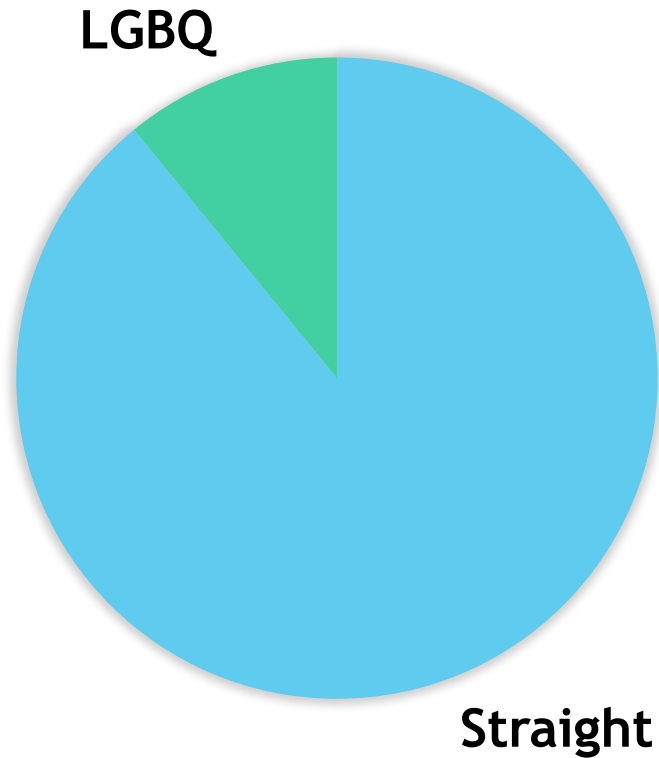
Race/Ethnicity

White (not Hispanic) = 66.4%



# 2015 DCYA Participant Demographics

## SEXUAL ORIENTATION



About 1 in 10  
7<sup>th</sup>-12<sup>th</sup> graders  
identify as  
lesbian, gay,  
bisexual, or  
questioning their  
sexual orientation

1.5% of high  
school  
students  
identified as  
transgender

# How is the survey data used?

## Schools

To educate students and families  
To inform programs and policies  
To apply for funding  
Through classroom instruction

## Community

To apply for grant writing  
Guide coalition work  
Develop resources  
Make informed decisions

Dane County  
Youth  
Assessment

## Funding Partners

Inform policy & budget decisions  
Grant writing  
Inform programming and resource allocation

## Researchers

Unique data base that  
contributes to local and a  
larger body of knowledge

# Research Partners include:



BOSTON  
COLLEGE

— *Ever to Excel* —



WISCONSIN  
UNIVERSITY OF WISCONSIN-MADISON



ILLINOIS



UNIVERSITÉ  
McGill



THE UNIVERSITY  
OF ARIZONA

# What does the 2015 data tell us?

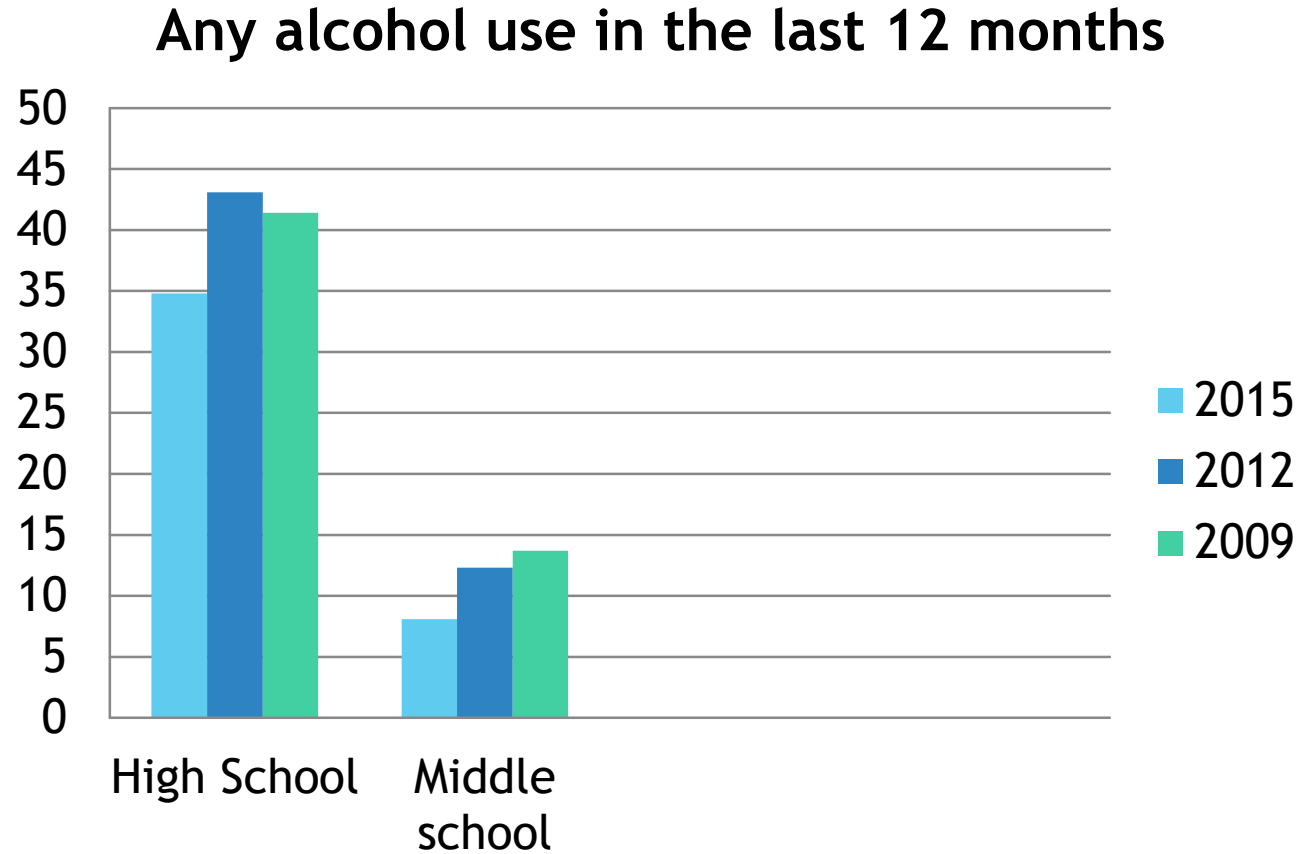
## Positive Trends

- ▶ Decreased alcohol use
  - ▶ Binge drinking
  - ▶ Drinking and driving
- ▶ Increased employment and volunteering
  - ▶ Decrease in reports of not being able to find a job when looking for one
- ▶ Higher ambitions for the future

## Negative Trends

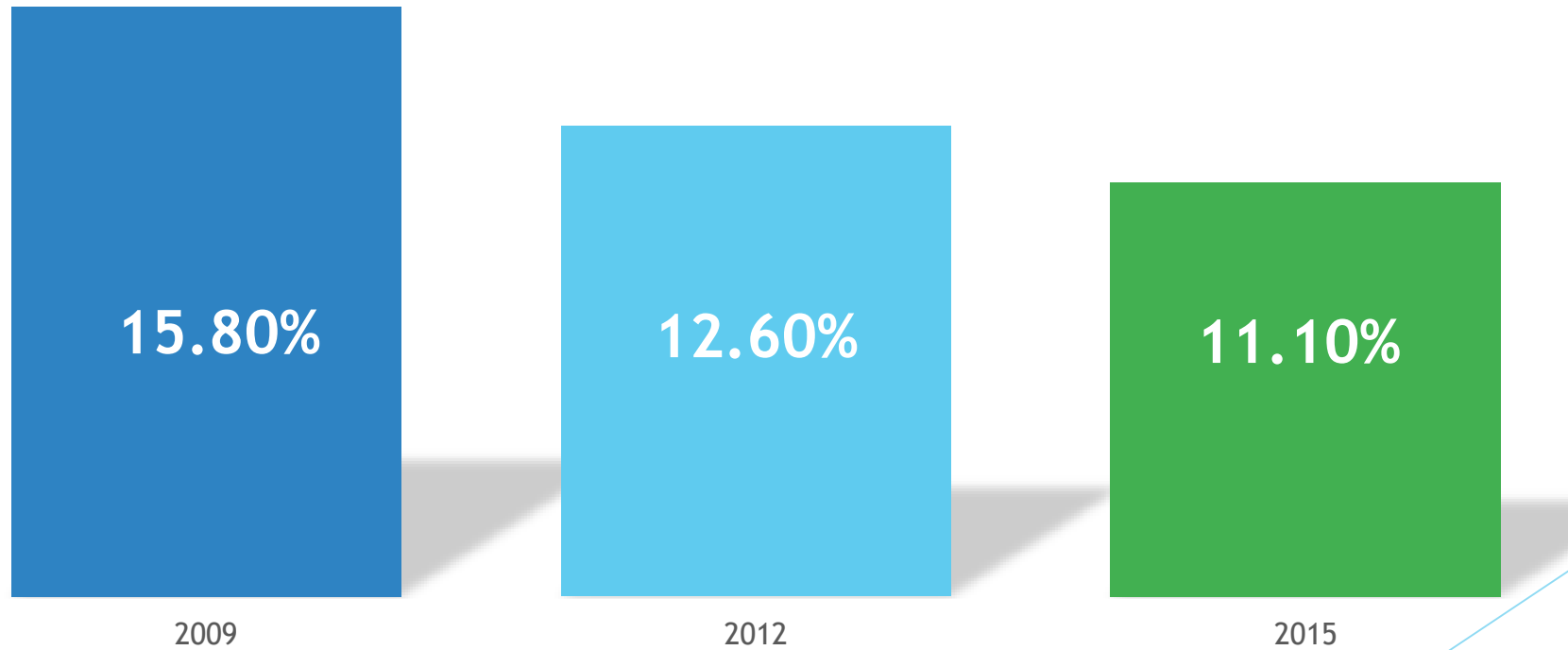
- ▶ Increased mental health issues
  - ▶ Anxiety
  - ▶ Suicide ideation
- ▶ Less sleep at younger ages
- ▶ Increased reports of bullying and harassment

# Snapshot: Alcohol Use among all students



# Binge Drinking in the Last 30 Days

Among all High School Students





# Still of concern...High School seniors

- ▶ 71.6% of high school seniors have had a drink in the last 12 months

Of these students:

- ▶ 37% report monthly drinking
- ▶ 40% report binge drinking
- ▶ 20% report drinking and driving

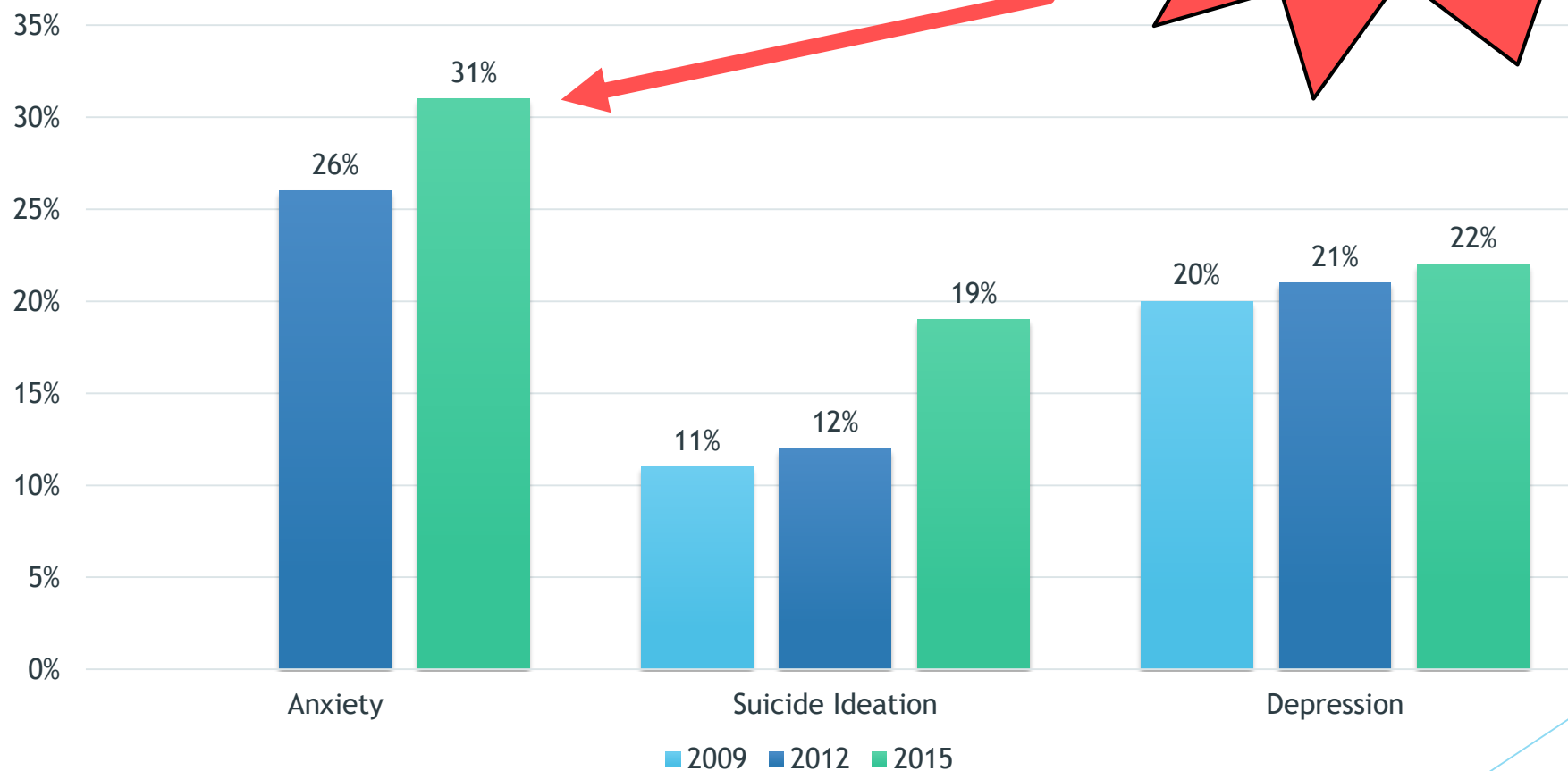
## Reasons HS students do not drink provides insight into prevention messaging

1. **23.9%** worry about the impact it will have on their future
2. **15.3%** say it's bad for your health
3. **12.0%** say parents would disapprove
4. **10.9%** said they tasted it and didn't like it

# Mental Health Trends

## Among High School Students

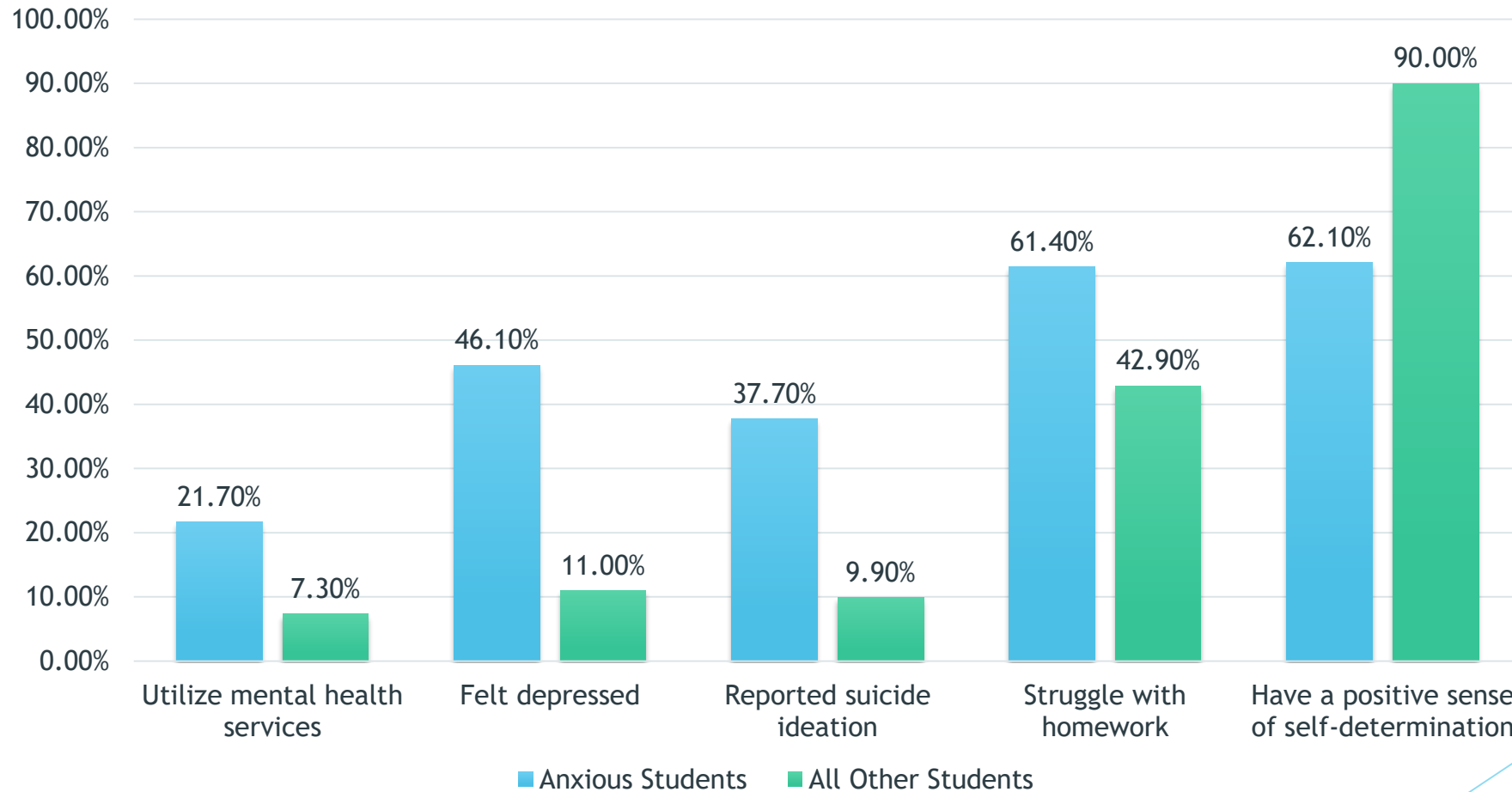
Nearly 1 in 3 students  
report feeling anxious!



# How do we measure anxiety?

- ▶ Generalized Anxiety Disorder Scale (3 of 7)
  - ▶ Felt nervous, anxious, or on edge
  - ▶ Not been able to stop or control worrying
  - ▶ Felt problems were piling up so high that you could not handle them
- ▶ Scale responses: Always, Often, Sometimes and Never

# Results: Students who report anxiety also report:



# Community Impact



The recently completed Dane County Youth Assessment of students across our county exemplifies the imperative nature of our work in this area. More than one in five students in 7th through 12th grade stated they felt so sad or hopeless almost every day for at least two weeks that they stopped some usual activities. Just under one in five admitted to giving serious thought to killing themselves. 38% of high school students surveyed reported having long term emotional or mental health issues including depression, anxiety, an eating disorder, or other mental health problem not including attention deficit disorder.

This budget includes the boldest efforts yet by Dane County government to address the challenges of mental illness in our schools and community.

offered to all other school districts in Dane County. The program connects youth with critical mental health services before a crisis occurs.

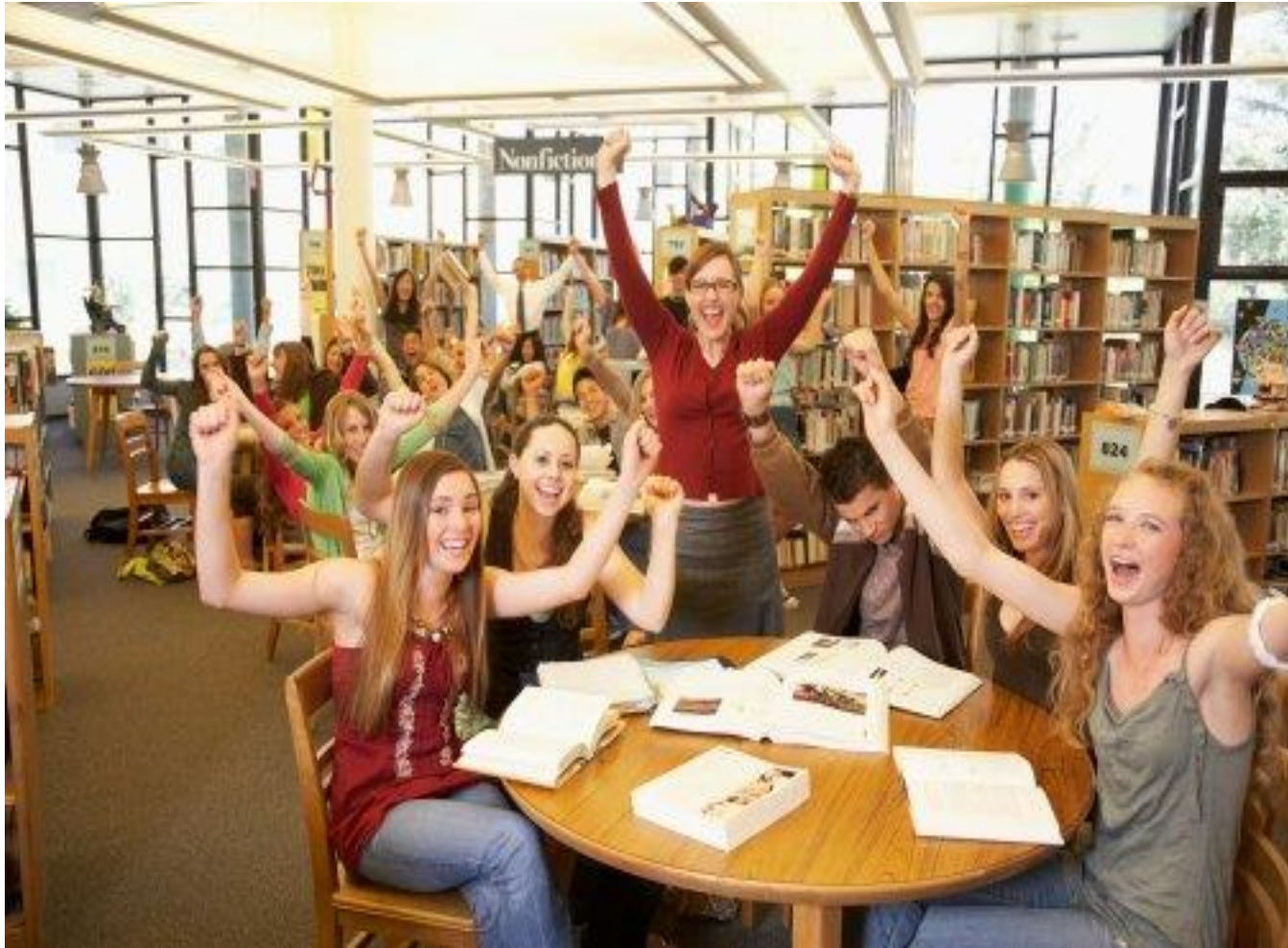
"The effects of mental illness are far reaching, affecting classrooms, families, and workplaces," said County Executive Parisi. "We all have personal accounts of its impact and the barriers it presents to learning in school and professional development at work, not to mention the challenges it presents to maintaining safe and healthy homes. We all have a role to play in confronting this global epidemic that when left unchecked contributes to other challenges county government plays a direct role at mitigating: unemployment, substance abuse, domestic violence, and fractured families. I am thrilled this program has resulted in such success for

# Survey Next Steps

- ▶ 2018 DCYA is in production!
- ▶ Survey Development: Primary objective is to **maintain** item consistency from year to year to **monitor trends**
  1. **Revise** questions that are **confusing**
  2. **Eliminate** questions that are no longer relevant
  3. **Add** questions to address **emerging issues**
- ▶ School partners on board
- ▶ Student pilots scheduled
- ▶ Launch date Jan-March 2018



# Questions? Thank you for your interest!



# Contact Info



**Brian  
Koenig**

**K-12 Associates**

[bwkoenig@k12associates.com](mailto:bwkoenig@k12associates.com)  
(608) 232-7099

**Connie  
Bettin**

**Dane County  
Human Services**

[bettin@countyofdane.com](mailto:bettin@countyofdane.com)  
(608) 242-6422

**First  
Last name**

**Dane County  
Youth Commission  
member**

[youremail@email.com](mailto:youremail@email.com)  
(608) 000-0000