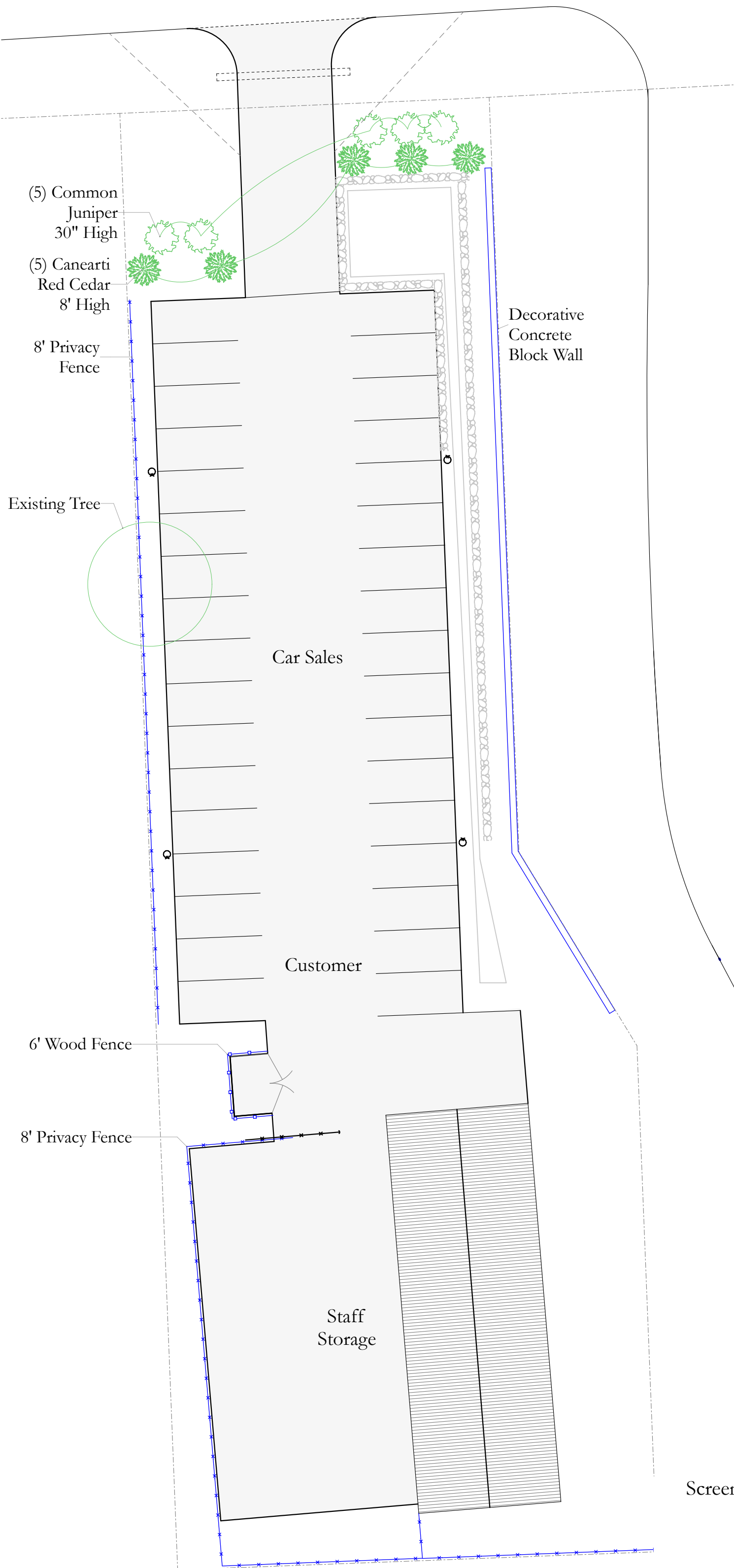


4'x8' Wall Sign

New Well

Proposed Site @ 1' = 20'
533 Waterloo
Medina, Wisconsin
February 25, 2022



Wood Fence



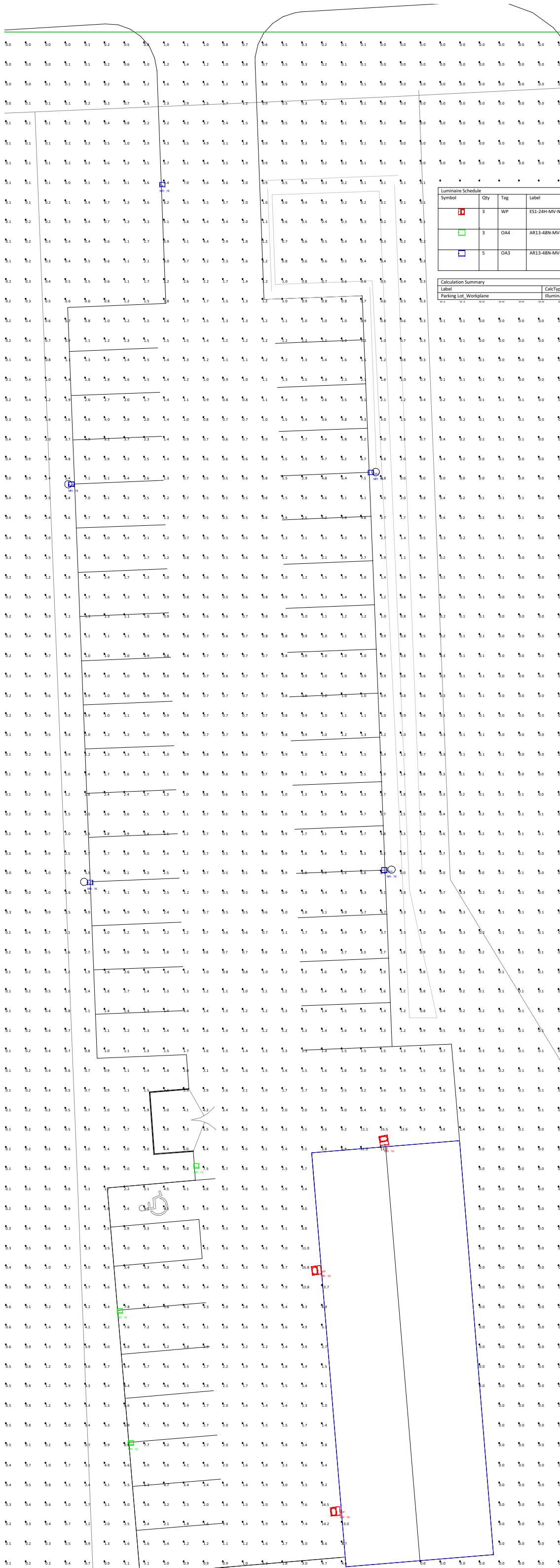
Privacy Fence



Common Juniper



Canaerti Red Cedar



Symbol	Qty	Tag	Label	Arrangement	Description	[MANUFAC]	LF	Luminaire Lumens	Luminaire Watts	Total Watts
WP	3		ES1-24H-MV-NW-WX-350	Single	ES1-24H-MV-NW-WX-350	LEOTEK ELECTRONICS USA LLC	0.950	3301	28.71	86.13
OA4	3		AR13-48N-MV-NW-4-XX-060	Single	AR13-48N-MV-NW-4-XX-060, 16' SSS	Leotek Electronics USA LLC	0.950	5960	40	120
OA3	5		AR13-48N-MV-NW-3-XX-060	Single	AR13-48N-MV-NW-3-XX-060, 16' SSS	Leotek Electronics USA LLC	0.950	5880	40	200

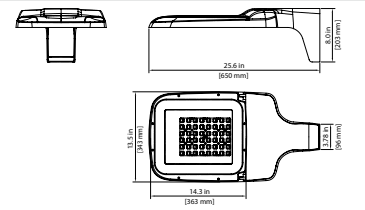
Label	CalcType	Units	Avg	Max	Min	Avg/Min	Max/Min
Parking Lot_Workplane	Illuminance	Fc	1.20	15.8	0.0	N.A.	N.A.



Project
Type
Catalog No.

ARIETA® 13 Architectural LED Area Luminaire AR13 N-Series Specification Data Sheet

Luminaire Data
 Weight 15.4 lbs [7 kg]
 EPA 0.47 ft²



Ordering Information
 Sample Catalog No. AR13 48N MV NW 5 BK 190 MSL3

Product	LED Code	Voltage	Nominal Color Temperature	Distribution	Finish¹	Output Code²	Options
AR13	48N	MV 120-277V HV 347-480V	WW 3000K	2 Type 2 3 Type 3 4 Type 4 5 Type 5 AFR Auto Front Row	BK Black DB Dark Bronze (RAL6022) Dark Bronze (RAL8019) WH White GY Gray NA Natural Aluminum	WW-3000K 030 040 055 080 100 120 150 170 190 NW-4000K CW-5000K	BL5¹ Back Light Shield (Factory Installed) FOC¹ Fixed Output Code PCR¹ NEMA Photocontrol Receptacle PCR7¹ ANSI 7-wire Photocontrol Receptacle PCR7-CR¹ Control Ready 7-wire Photocontrol Receptacle MSL7¹ Motion Sensor with L3 Lens MSL3¹ Motion Sensor with L3 Lens SP2¹ 20kV/10kA Surge Protector PND3¹ Part-Night Dimming PND3¹ Part-Night Dimming ORL¹ Optics Rotated Right ORL¹ Optics Rotated Left WL¹ Utility Wattage Label

- Black, Dark Bronze, White, Gray, or Natural Aluminum standard. DB (RAL6022) is our original dark bronze. DB1 (RAL8019) is a new dark bronze option. Consult factory for other finishes. See page 2 for specifications.
- Specified output code set at the factory set. Includes fixture mounted output selector that enables field adjustable light levels.
- Flush mounted enhanced back light shield, factory installed.
- No field adjustable output. Specified output code set at the factory.
- Includes output selector that enables field adjustability of light levels. Field configurable connectors included to enable dimming connection to PCR7 (wireless node dimming is disabled by default).
- Control-ready wired at factory for wireless node dimming. Output selector not included in fixture. Not able to adjust above specified drive current.
- See L7 or L3 Lens coverage details on page 4. Consult factory for MS specified with ANSI 7-wire Photocontrol Receptacle. PCR option is required for On/Off control using light detection. Not available in HV.
- For PND profile options see page 5. Only available with MV (120-277V).
- Specify Color (GY, DB, BK, WH, NA)
- Specify MV (120-277V) or HV (347V-480V)

© 2020 Leotek Electronics USA LLC.
 AR13_N-Series_Specification_Sheet_02-22-21. Specifications subject to change without notice.



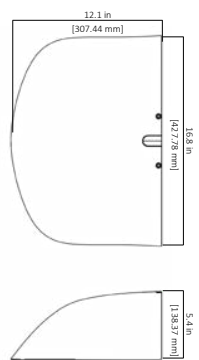
Pole Mount - AR13



Project
Type
Catalog No.

Eseta™ LED Wall Sconce ES1

Luminaire Data
 Weight 9.9 lbs [4.5 kg]
 14.6 lbs [6.5kg] with EM, MS options



Ordering Information
 Sample Catalog No. ES1 24H MV NW BK 700 EM

Product	No. & Type of LEDs	Voltage	Color Temperature¹	Distribution	Finish²	Drive Current³	Options
ES1	24H 48H	MV 120-277V HV 347-480V	WW 3000K NW 4000K CW 5000K	W Wide FT Forward Throw	BK Black DB Dark Bronze GY Gray WH White	350 350mA 530 530mA 700 700mA	PC⁴ Photo Control MSL2¹ Motion Sensor, L2 Lens MSL3¹ Motion Sensor, L3 Lens EM⁵ Emergency Battery System - Cold Weather Rated (-20°C/-4°F) FSIR100 Motion Sensor Configuration Tool

- Notes
- Consult factory for other color temperatures.
 - Consult factory for non-standard finish options. See page 2 for specifications.
 - Factory set drive current, non-field adjustable. 700mA is not available for 48H version. Refer to performance data on page 2. Consult factory for other drive current options.
 - Motion Sensor available with MV only. Motion Sensor default setting dims luminaire to 50% when no motion is detected for 5 minutes. Field adjustable settings available using FSIR100 option.
 - Emergency Battery System available with MV only. 3-year limited warranty on Emergency Battery System.
 - Available with MV. For HV specify either 347V or 480V.

© 2021 Leotek Electronics USA
 ES-1_Specification_Sheet_2-4-21. Specifications subject to change without notice.



Wall Pack - ES1