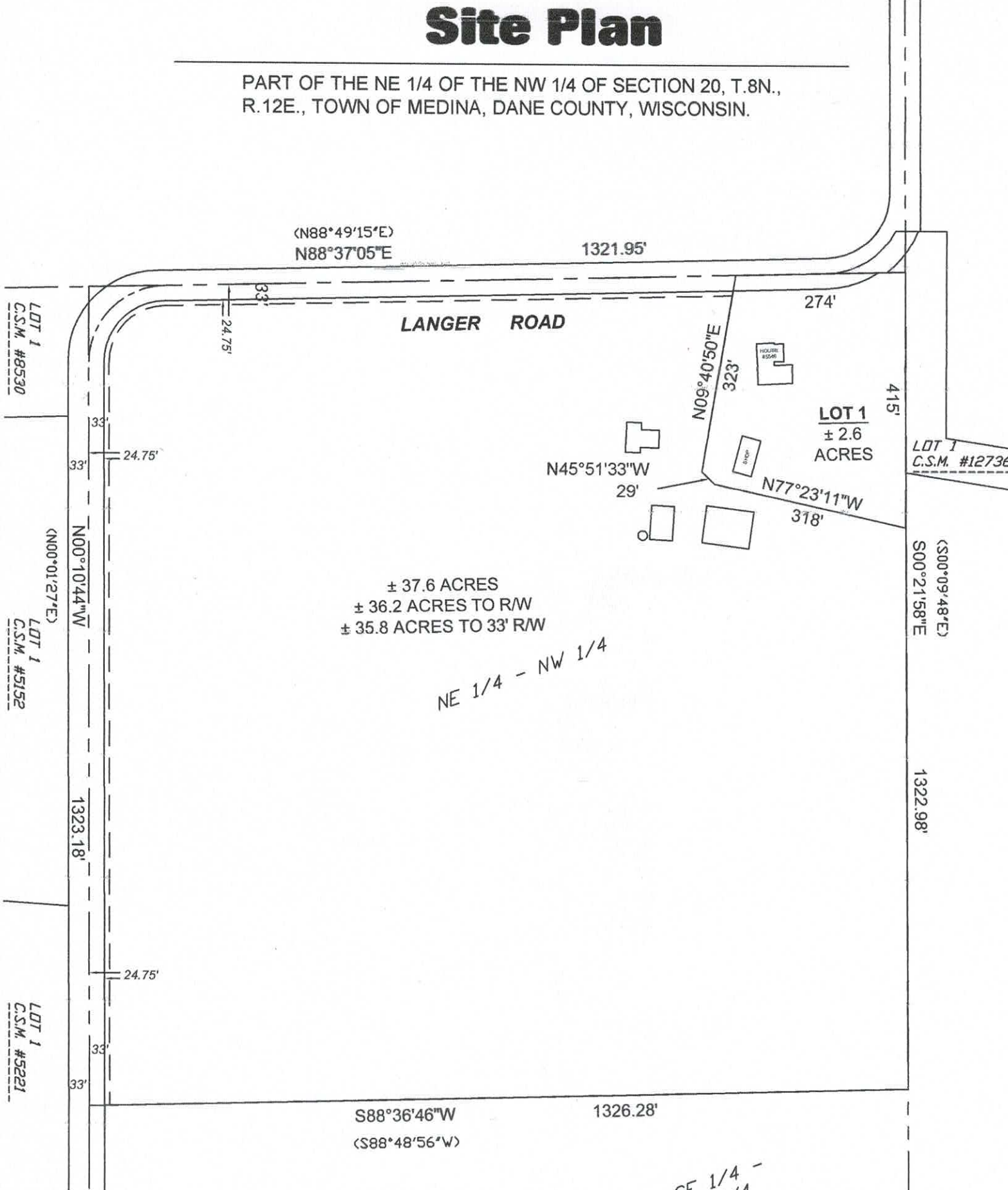


# Site Plan

PART OF THE NE 1/4 OF THE NW 1/4 OF SECTION 20, T.8N.,  
R.12E., TOWN OF MEDINA, DANE COUNTY, WISCONSIN.



**Wisconsin Mapping, LLC**  
 \* *surveying and mapping services*  
 306 West Quarry Street, Deerfield, Wisconsin 53531  
 (608) 764-5602

Referred to the  
 Dane County  
 Coordinate  
 System.

