

# Dane County Jail Trends

James Austin

JFA Institute

Figure 1. Dane County ADP Under Roof  
January 2018 - July 2022

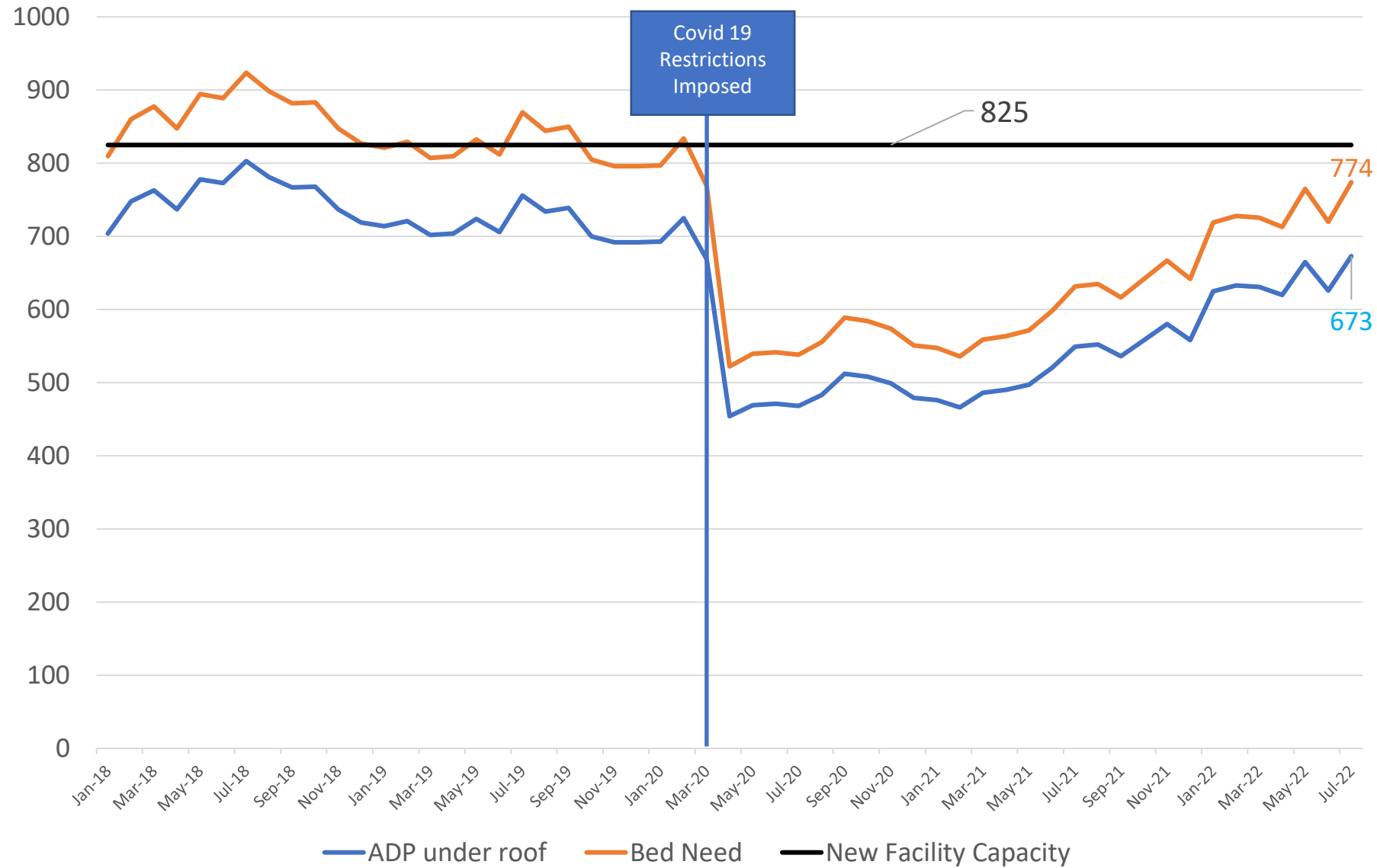
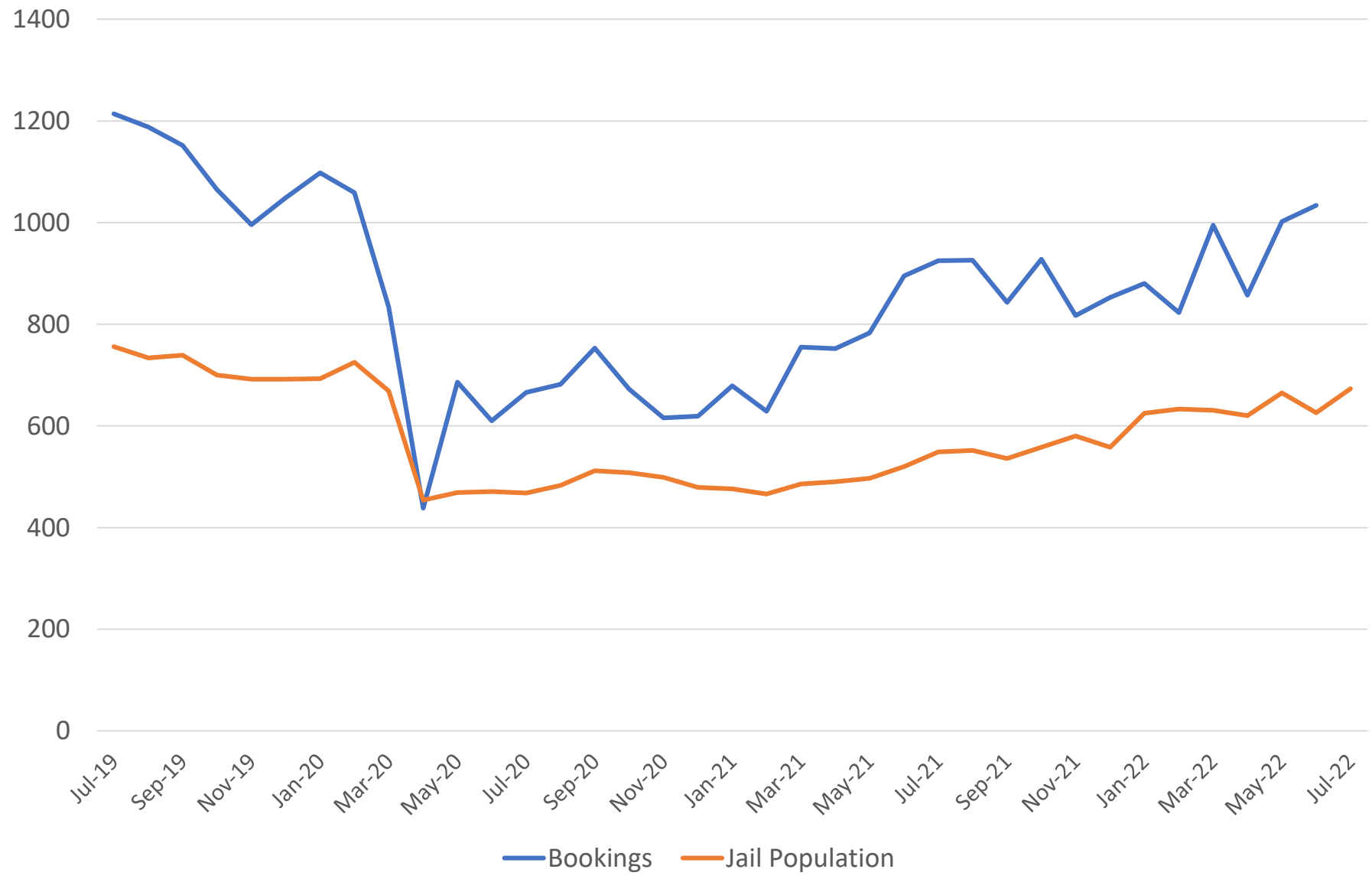


Figure 2. Monthly Bookings and Jail Population  
July 2019 - June 2022



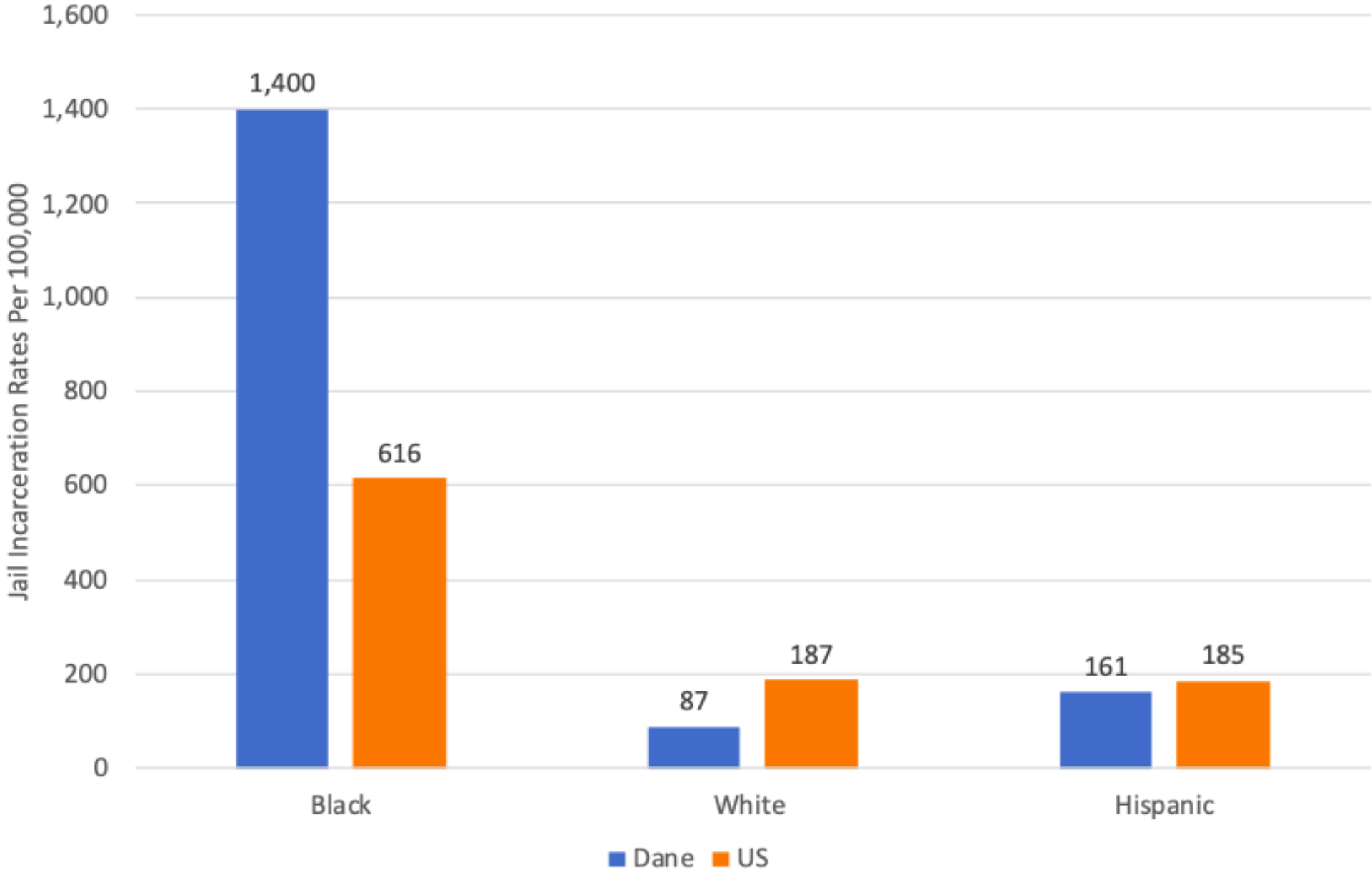
# Madison Police and Dane County Sheriff Reported Crime and Arrests 2018-2021

Year	2018	2019	2020	2021
MPD Crimes				
Total	24,887	26,689	25,308	25,188
Group A	14,106	14,127	14,548	13,524
Group B	10,781	12,562	10,760	11,664
B-All Other	6,376	7,514	6,585	7,314
DCSO Part 1 Crimes	702	788	888	
MPD Arrests	8,012	8,086	6,234	6,184
DCSO Arrests	2,079	2,085	1,697	

## Key Dane County Jail Population Attributes July 25, 2021 vs. July 25, 2022

Attribute	Jul-21	Jul-22	Difference
Total Jail Population	649	777	128
“Under the Roof”	578	673	95
CAMP	71	104	33
Sentenced Huber	78	80	2
Prob/Parole Hold	76	97	21
Federal	42	56	14

**Figure 2. Jail Incarceration Rates by Race/Ethnicity  
Dane County vs. U.S.**



**Table 11. Arrest, ADP and jail Releases Rates by Race and Ethnicity**

<b>Race/Ethnicity</b>	<b>Arrest Rate Per 100 Population</b>	<b>Current Jail Population Per 1,000 Population</b>	<b>Jail Releases Per 100 Population</b>
Hispanic	1.2	1.6	2.8
White	1.1	0.9	1.0
Black	9.8	14.0	9.7

# October 2021 Recommendations

1. Adopt Option #2 which eliminates the unnecessary PSB renovation plans to create infirmary, upgraded and expanded basement kitchen and related support functions.
2. Redesign the proposed Tower facility to include new medical clinic, acute/step-down mental health units, and houses medium and maximum security residents now residing in the CCB.
3. Implement population control measures to ensure the population remains below 716 which would include:
  - a. Increasing the number of Huber Sentenced Residents on EM;
  - b. Removing all Youthful Residents under age 17 and House them in the Empty Juvenile Detention unit;
  - c. Terminating/reducing Federal Contract for Housing Federal Transit Residents;
  - d. Implementing Weekend Initial Appearance Court ;
  - e. Creating a Jail Population Review Panel for Detainees in Custody for more Than 120 days; and,
  - f. Funding the Crisis Stabilization Center with surpluses from the \$148 million JCP construction costs
4. Regardless of which option is adopted by the County, it should recalculate bed need using a 15% peaking/classification factor and not the 20% rate.