

Hookstead Farms LLC Appeal

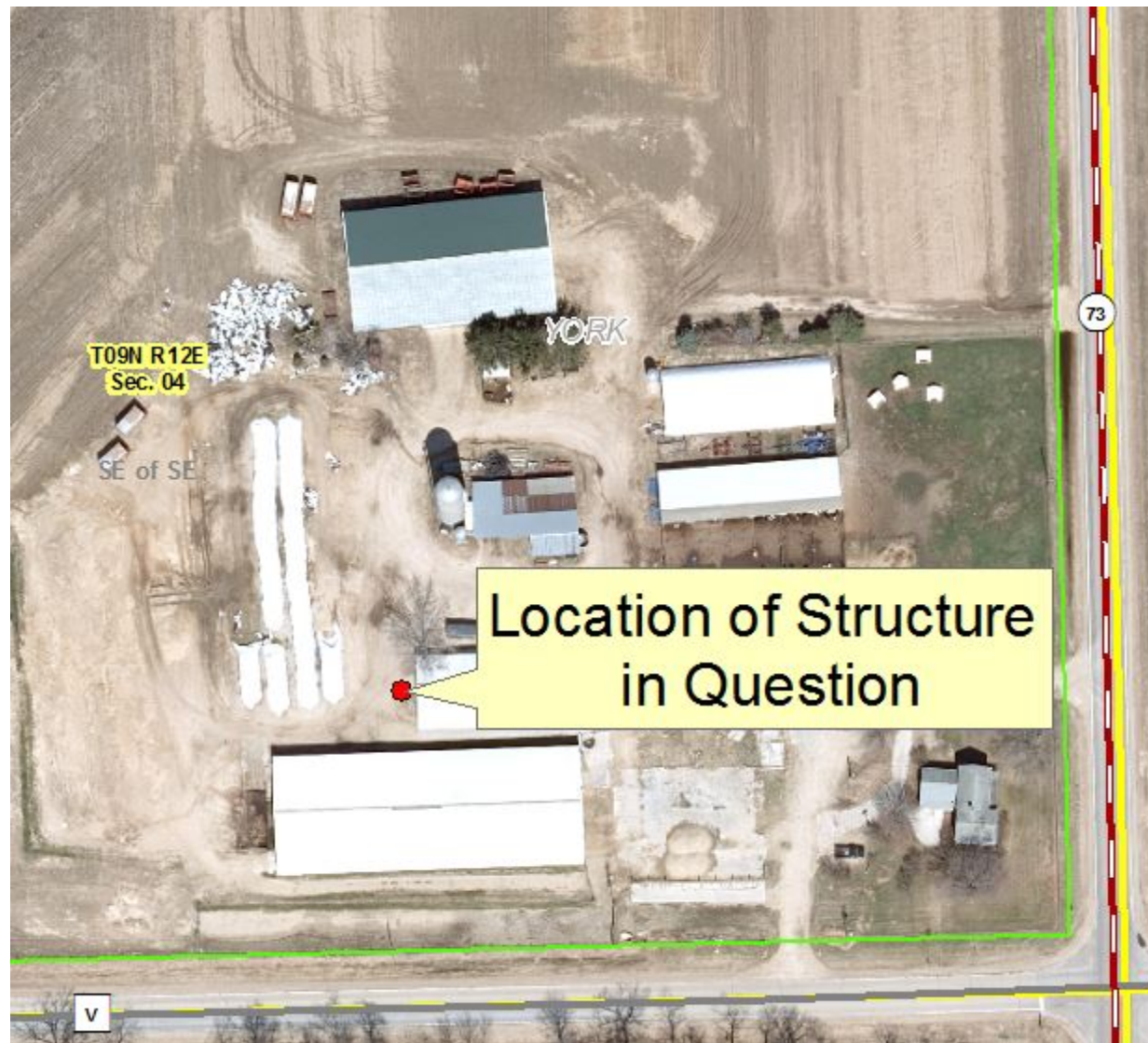
Land Conservation Committee

February 24, 2022

Definitions

- *Manure storage facility* is defined as “an impoundment made by constructing an embankment or excavating a pit or dugout or by fabricating a structure to contain manure, process wastewater, or other animal or agricultural waste.” Ch. 49.04(20), DCCO
- *Manure* is defined as “livestock excreta and including the following when intermingled with excreta in normal farming operations: debris including bedding, water, soil, hair, and feathers; processing derivatives including separated sand, separated manure solids, precipitated manure sludges, supernatants, digested liquids, composted biosolids, process wastewater; and runoff collected from barnyards, animal lots, and feed storage areas.” Ch. 49.04(19), DCCO
- *Certificate of use* requirement means “no person may operate or use a manure storage facility, or any portion of a manure storage facility constructed without a permit issued by the department or has an expired permit unless the person has a valid certificate of use for the manure storage facility or that portion of the manure storage facility that is being operated or used.” Ch. 49.16(1), DCCO

2014 Air Photo



2017 Air Photo





Milkhouse Waste and Transfer Pump



North Manure Storage Facility



South Manure Storage Facility



Summary

- Three structures located at the farm meet the definition of “manure storage facility”
- Structures are holding material that meets the definition of “manure”
- Therefore, a certificate of use is required for operation.