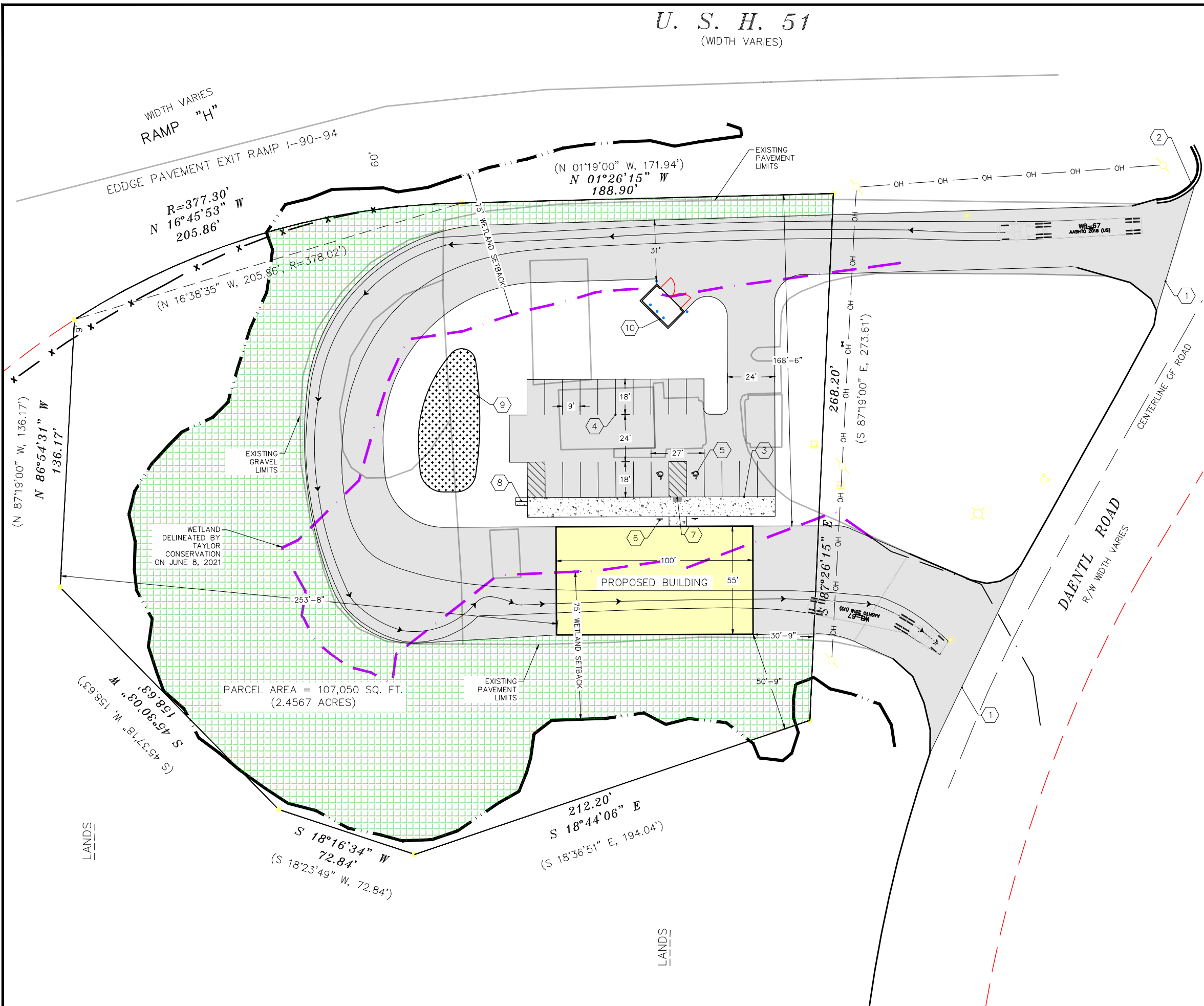


U. S. H. 51
(WIDTH VARIES)



PLAN KEY

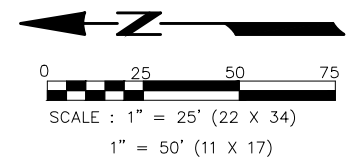
- 1 EXISTING DRIVEWAY APPROACH
- 2 EXISTING CURB AND GUTTER
- 3 THICKENED EDGE CONCRETE, TYP.
- 4 4" PAVEMENT STRIPING WITH TWO COATS OF TRAFFIC GRADE LATEX PAINT, TYP
- 5 ACCESSIBLE STALL, TYP.
- 6 VAN ACCESSIBLE PARKING SIGN, TYP.
- 7 CURB RAMP, W/DETECTABLE WARNING FIELD, TYP
- 8 BIKE RACK TO BE DERO PART# BH-FIT-EPX BIKE RACKS SURFACE MOUNT POWDER COAT FINISH
- 9 BIORETENTION AREA FOR STORMWATER MANAGEMENT
- 10 TRASH ENCLOSURE

SITE INFORMATION

SITE ADDRESS: 6011 US HWY 51 (DAENTL RD)
 SITE ACREAGE TOTAL: 107,050 SF (2.46 ACRES)
 NUMBER OF BUILDING STORIES = 1
 BUILDING AREA = 6,600 GSF
 EXISTING IMPERVIOUS AREA = 48,518 SF
 PROPOSED IMPERVIOUS AREA = 37,694 SF
 IMPERVIOUS SURFACE % = 35.2%
 NUMBER OF PARKING STALLS: 22 (2 HC)
 TOTAL BIKE PARKING: 2 STALLS

KEY

- ASPHALT PAVEMENT
- CONCRETE
- BIORETENTION DEVICE
- RESTORE AREA WITH NATIVE VEGETATION



ISSUANCE/REVISION	DATE
SITE PLAN APPROVAL	06-09-2022

818 N Meadowbrook Ln
 Waukegan, WI 53597
 phone (608) 849-9378
 www.pe-wi.com



TOWN OF BURKE, WISCONSIN

TRUCK WASH
 SITE PLAN

6011 US HWY 51 (DAENTL RD)
 C200