

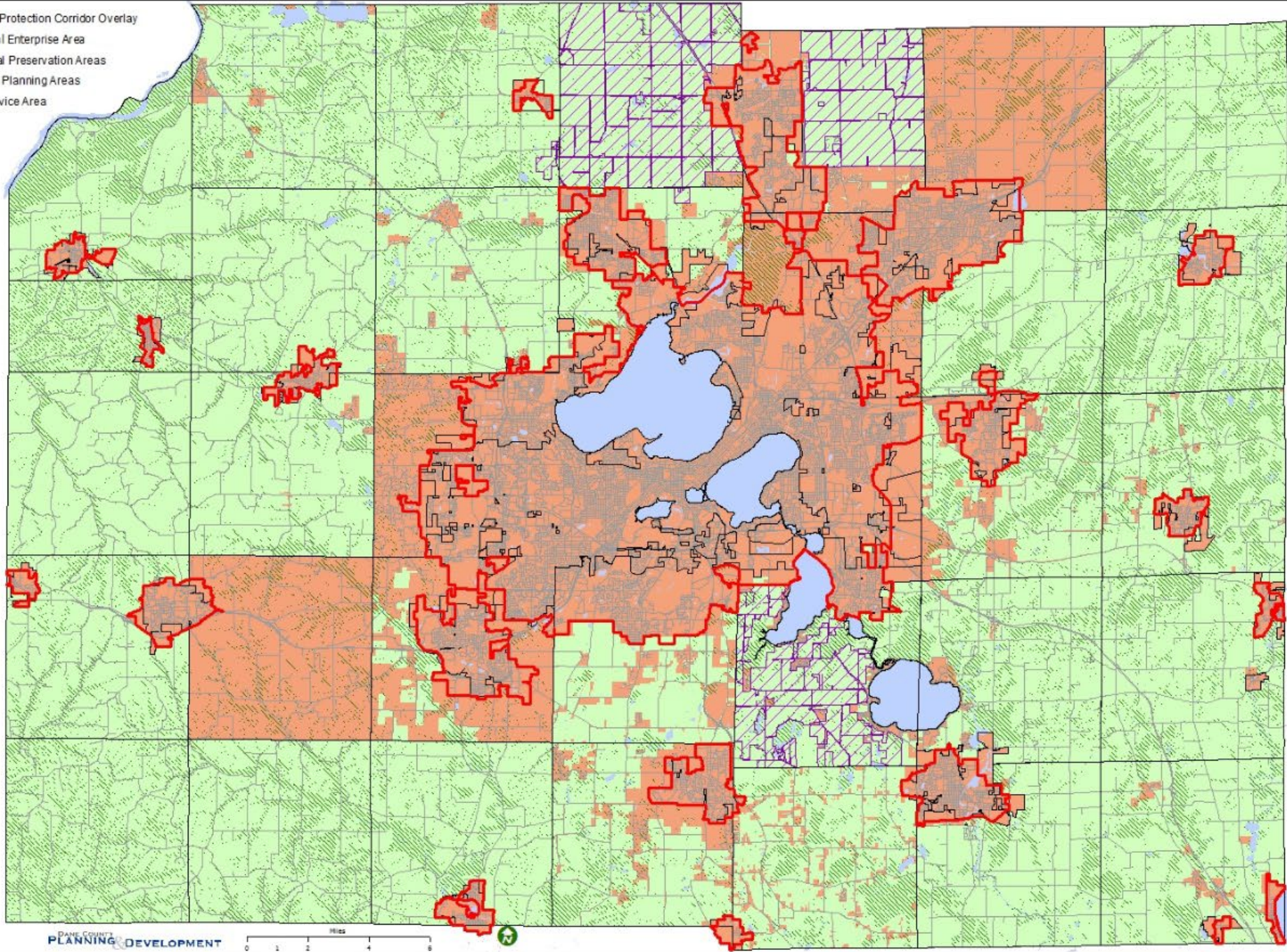
I. What is the Farmland Preservation Plan?

- ▶ Sets Dane County's goals, objectives and policies for protecting working agricultural lands and the farm economy.
- ▶ Determines eligibility for farmland preservation tax credits and other benefits under state Working Lands Initiative.
- ▶ Governed by Chapter 91, Wis. Stats.

FPP 10: Farmland Preservation Plan Map Date: 2/1/2022

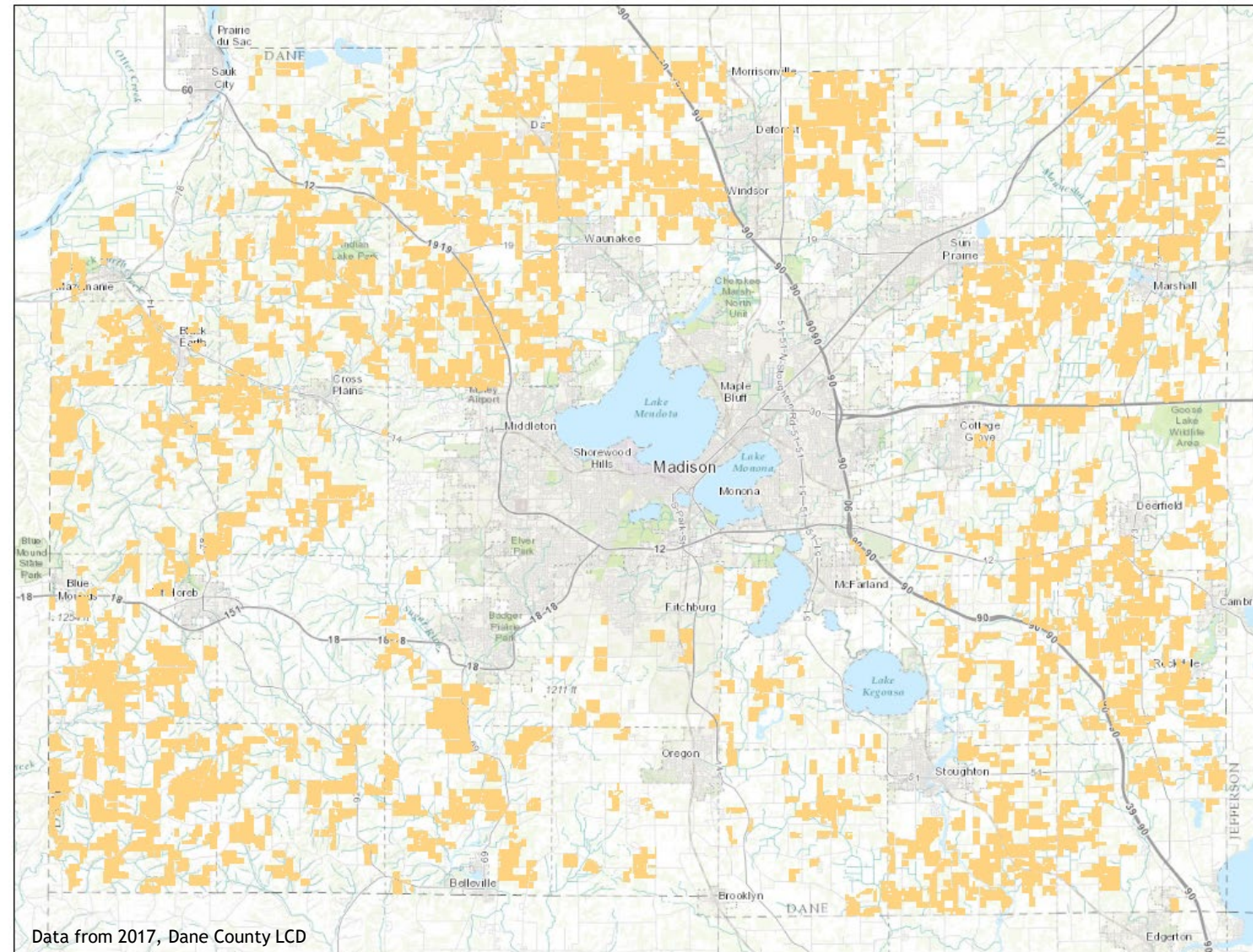
Dane County, WI

- Resource Protection Corridor Overlay
- Agricultural Enterprise Area
- Agricultural Preservation Areas
- Non-Farm Planning Areas
- Urban Service Area



Soil & Water Conservation

Helps farmers & local governments preserve farmland, protect soil & water, and minimize land use conflicts (DATCP)



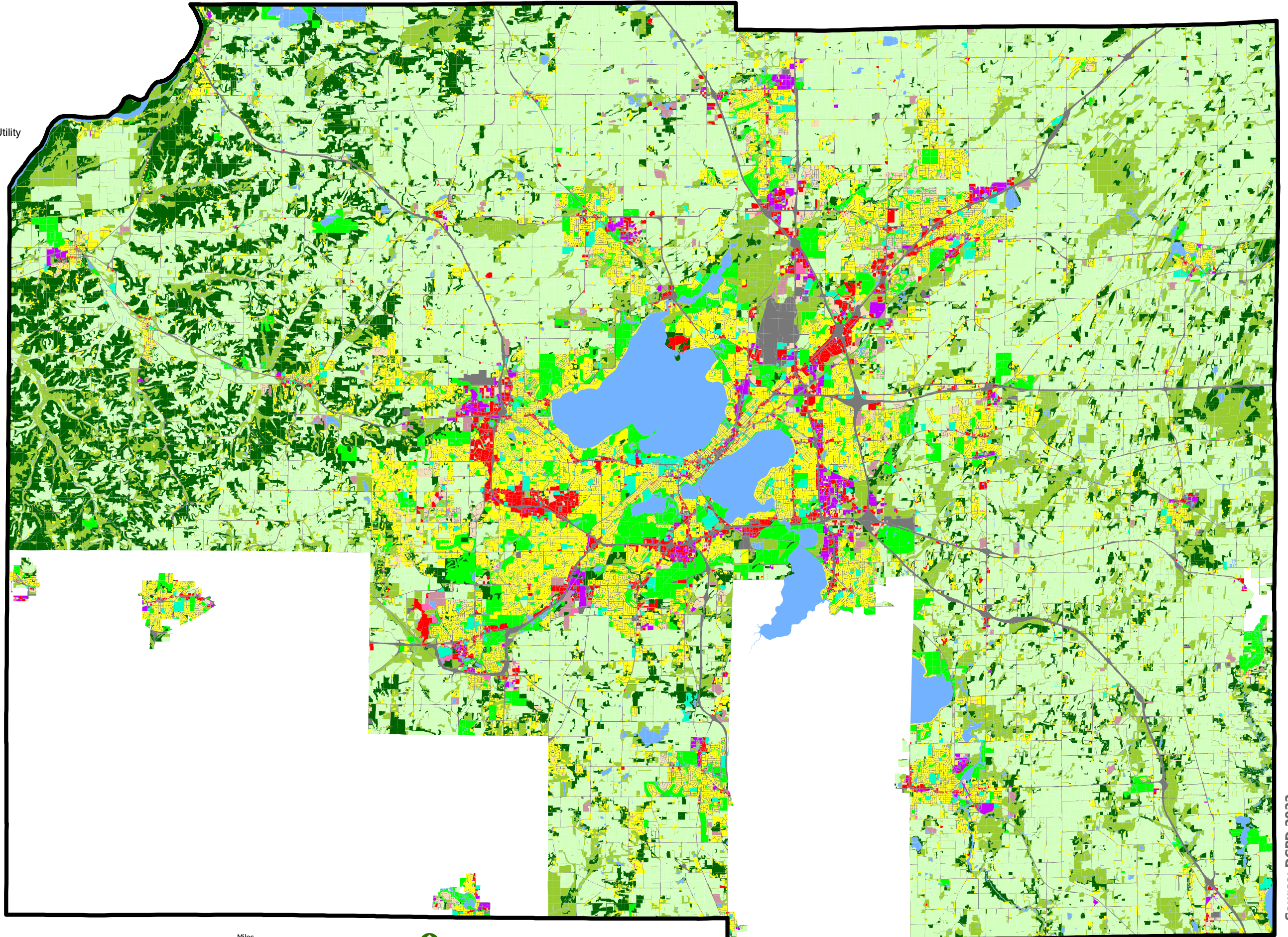
~ 178,000 acres under Certificates of Compliance

Dane County Farmland Preservation Plan: Recertification

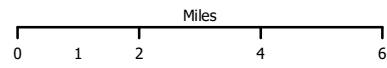
- ▶ Last amended and certified by DATCP in 2012.
- ▶ Dane County must recertify its Farmland Preservation Plan by 12/31/2022

[s.91.14(1)(a), Wis. Stats.]

- Agriculture
- Commercial
- Extractive
- Institutional Governmental
- Manufacturing
- Open Land
- Recreation
- Residential
- Under Construction
- Transportation, Communication & Utility
- Vacant Subdivided Land
- Water
- Woodlands



FPP 1 - 2020 Land Use
Dane County, WI

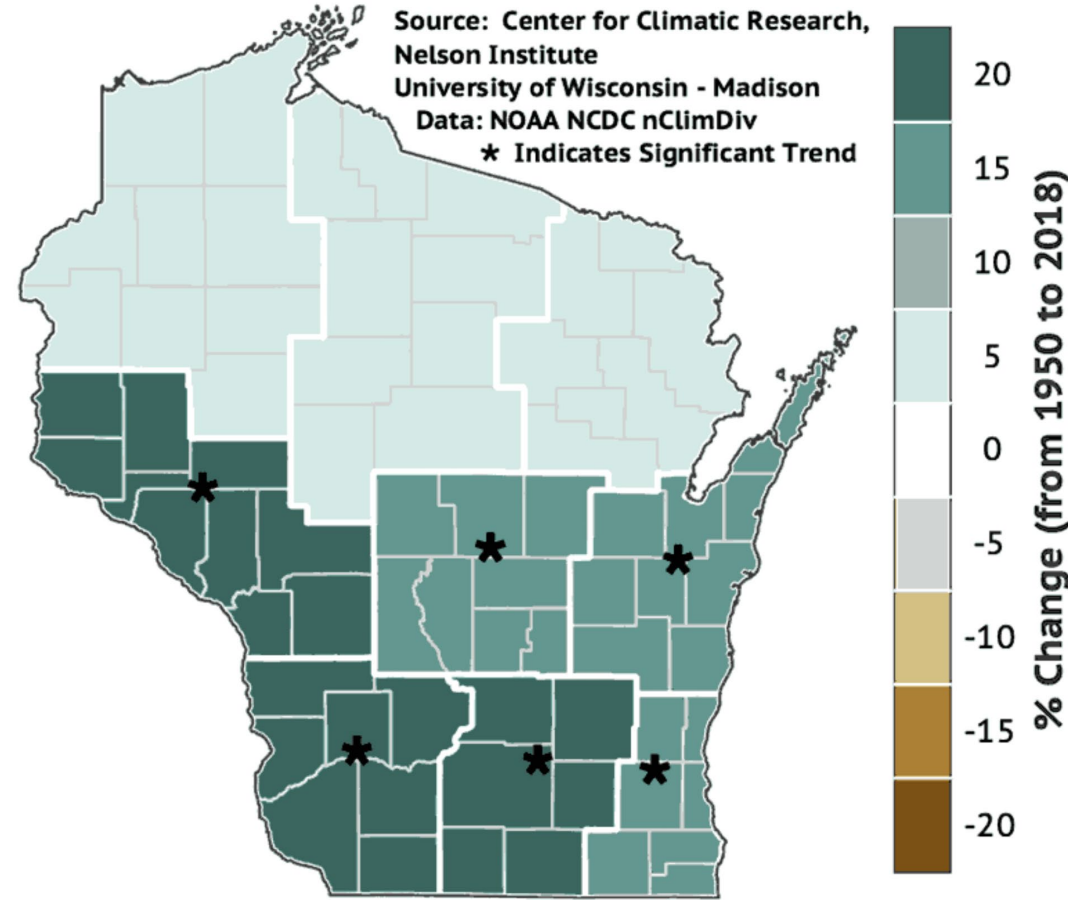


June 2022

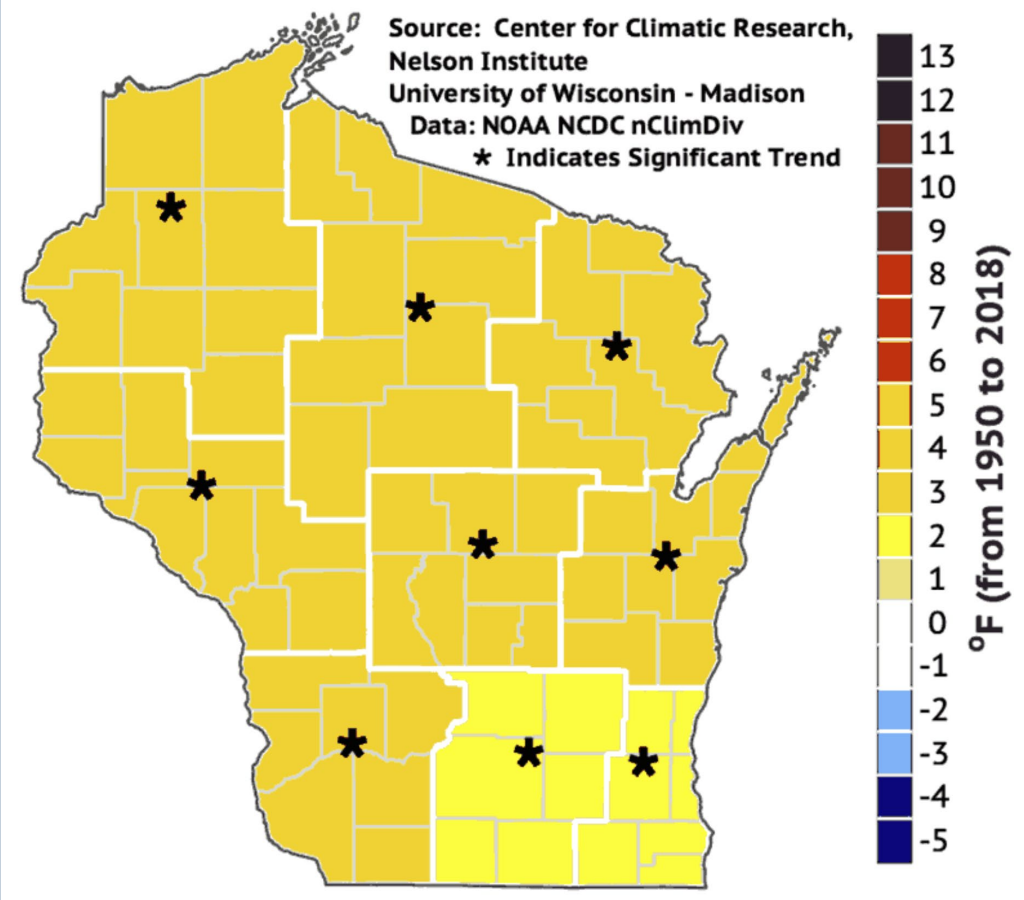
Source: DCPD 2022

Projected climate change for Wisconsin

Historical Change in Annual PRECIP (%) from 1950 to 2018



Historical Change in Annual TMEAN from 1950 to 2018



Adaptation Strategies

Diversifying Cropping
Systems/Markets

Install water retention area

Improve irrigation efficiency

Mitigation Strategies

Improving soil
health/carbon

Implementing
Agroforestry

Increase
biodiversity

Reducing Commercial
Fertilizer

Improve Manure
Management

Incorporate clean energy

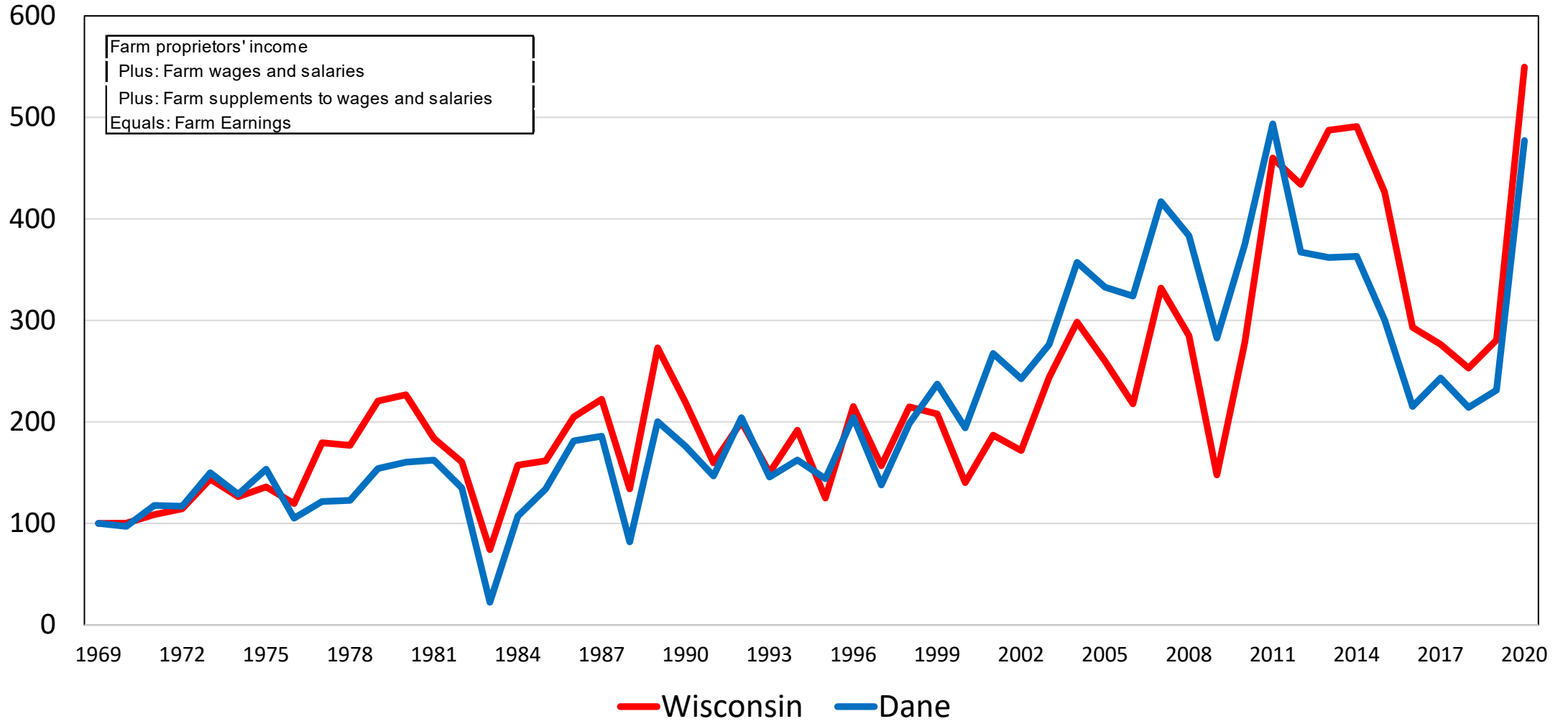
Improving soil
health/carbon

Implementing
Agroforestry

Increase
biodiversity

Contribution of Agriculture to the Dane County Economy: Update 2019-2020

Farm Earnings Growth Index

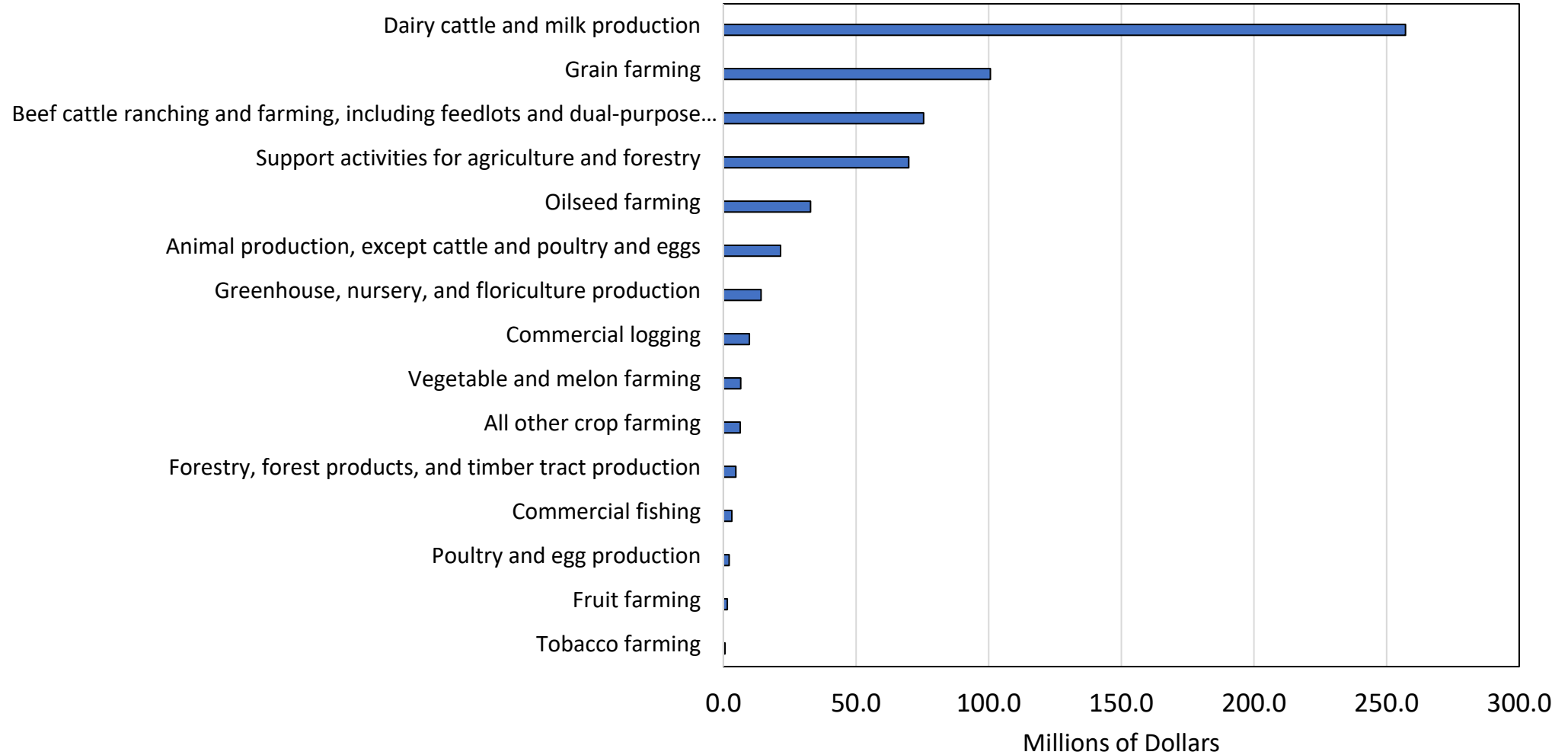


Source: BEA REIS, calculations by the author.



Contribution of Agriculture to the Dane County Economy: Update 2019-2020

Dane County Farm Sector Industry Sales (2019)

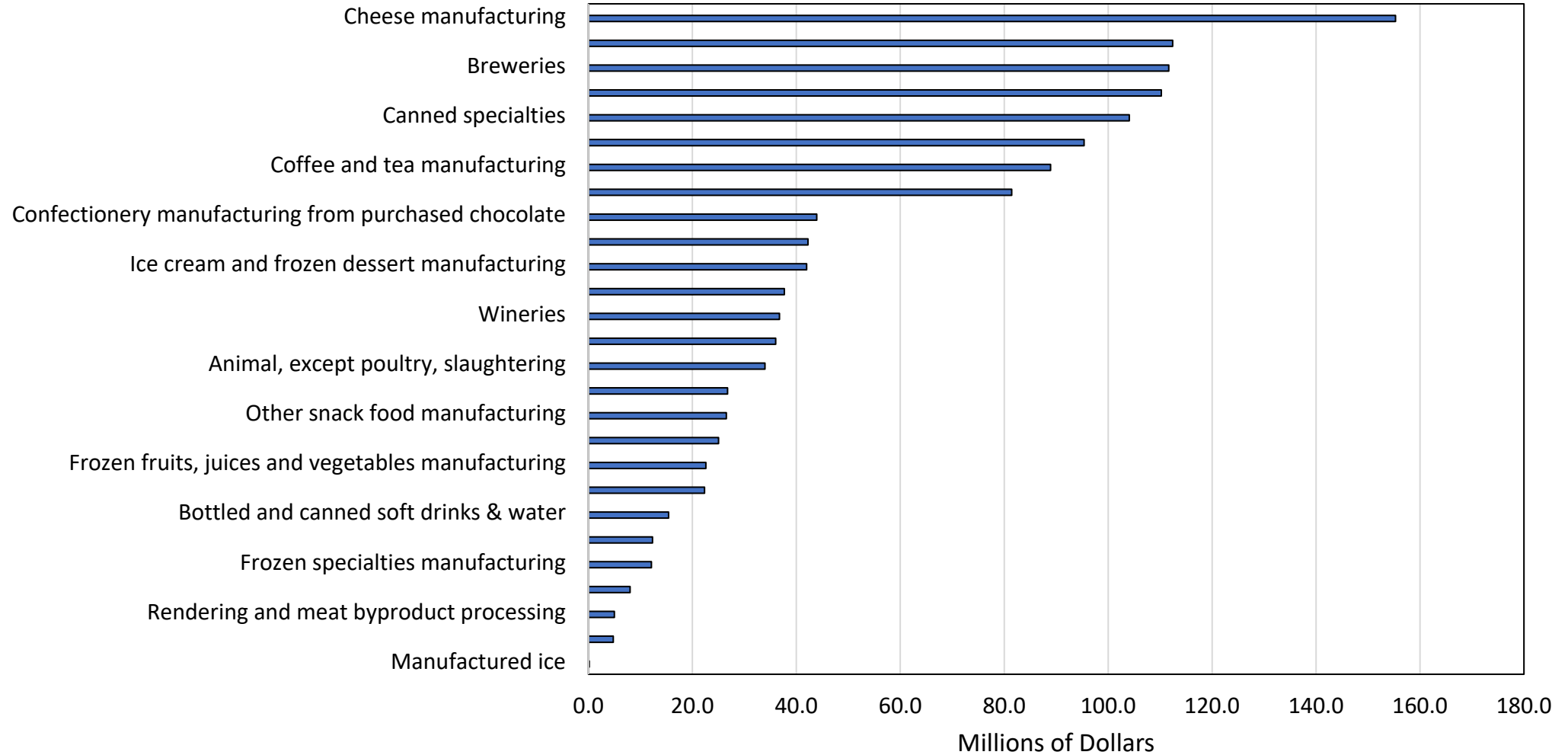


Source: IMPLAN.



Contribution of Agriculture to the Dane County Economy: Update 2019-2020

Dane County Food Processing Sector Industry Sales (2019)

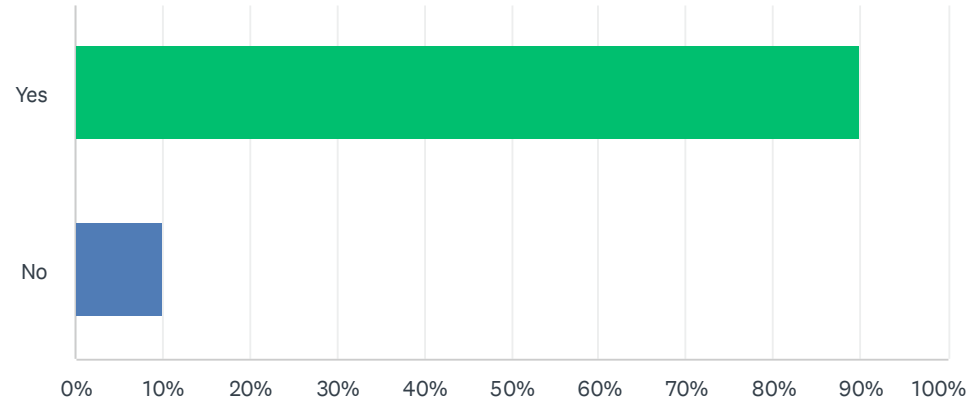


Source: IMPLAN.



Q8 Do you currently have a nutrient management plan on your property?

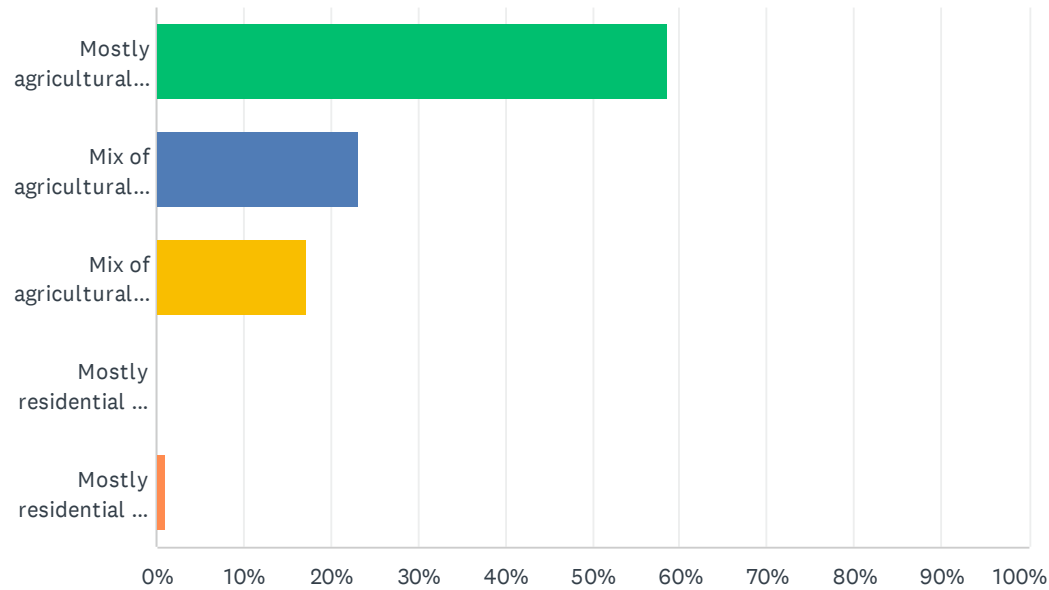
Answered: 100 Skipped: 19



ANSWER CHOICES	RESPONSES	
Yes	90.00%	90
No	10.00%	10
TOTAL		100

Q12 Which of the following statements best describes how you want the town, village, or city in which you farm to look 20 years from now?

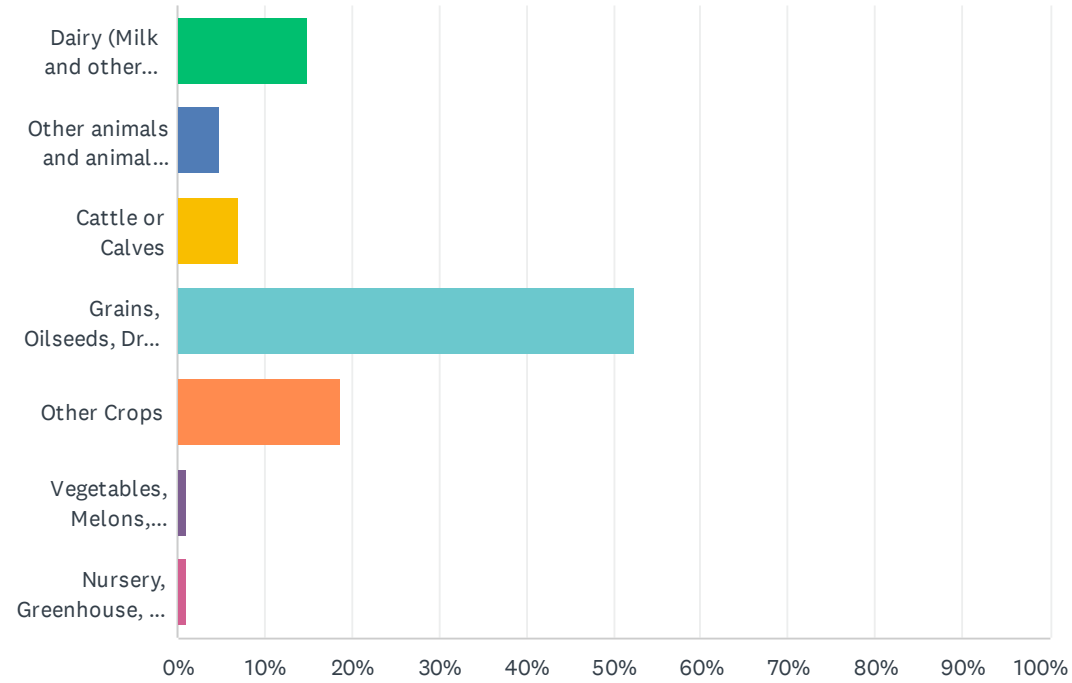
Answered: 99 Skipped: 20



ANSWER CHOICES	RESPONSES	
Mostly agricultural and open lands	58.59%	58
Mix of agricultural, open lands and residential	23.23%	23
Mix of agricultural, business and residential	17.17%	17
Mostly residential and limited agriculture	0.00%	0
Mostly residential and business with limited agriculture	1.01%	1
TOTAL		99

Q14 What is your primary agricultural product?

Answered: 101 Skipped: 18



Farmland Preservation Plan (current)

Major Policies

- ▶ Zoning
 - ▶ Farmland Preservation Zoning
 - ▶ Other Zoning
- ▶ Density Caps
- ▶ Siting Criteria for Development
- ▶ Agricultural Enterprise Areas
- ▶ Agricultural Conservation Easements
- ▶ Transfer of Development Rights
- ▶ Increase Density in Non-Farmland Preservation Areas

Farmland Preservation Plan

New Policies Under Development

- ▶ Siting, Conditions and Reclamation for Solar Farms
 - ▶ County direct authority limited
 - ▶ Minimize conflicts with other rural uses
 - ▶ Identify compatible accessory agricultural or habitat uses
 - ▶ Restore to agricultural use if ever abandoned
- ▶ Dedicated Purchase of Agriculture Conservation Easement Fund
 - ▶ 25% to 50% county match for local government PACE programs
 - ▶ Leverage to access federal, other grants
 - ▶ \$250,000 to \$300,000 annual capital expenditure
 - ▶ Monitoring in perpetuity significant staffing/resource challenge
- ▶ Climate Change Adaptation and Mitigation