

# Contribution of Agriculture to the Dane County Economy: Update 2019-2020

Steven Deller

Economic Development Administration University Center  
Department of Agricultural and Applied Economics  
Division of Extension  
University of Wisconsin-Madison

March 12, 2022



## Contribution of Agriculture to the Dane County Economy: Update 2019-2020

The intent of this project is to update the Contribution of Agriculture to the Wisconsin Economy for Dane County using the most recently available data.

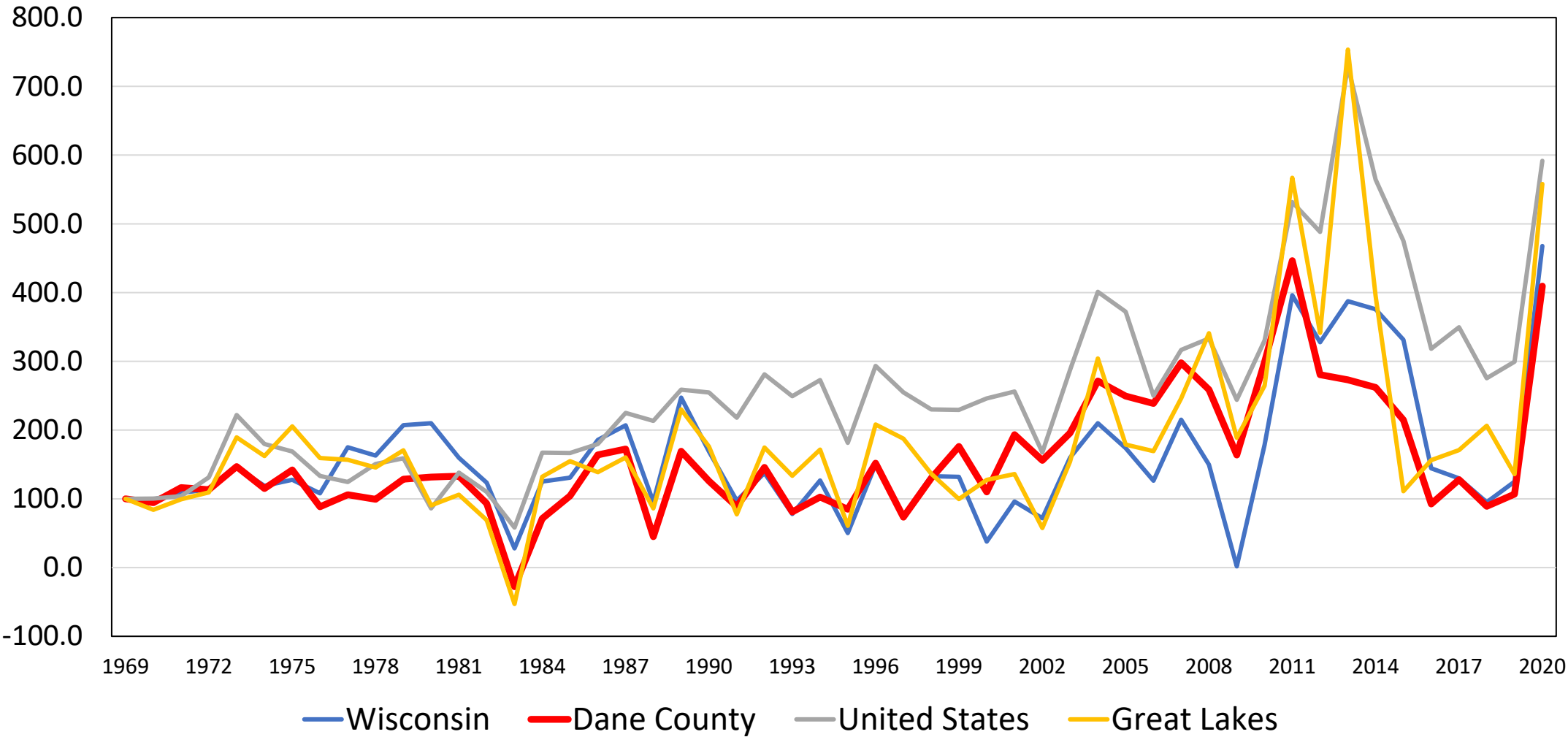
This analysis is composed of two parts:

1. Updated contribution analysis using the most current IMPLAN data: 2019
2. Trend analysis of farming fiscal patterns using the most current BEA REIS data: 2020



Contribution of Agriculture to the Dane County Economy: Update 2019-2020

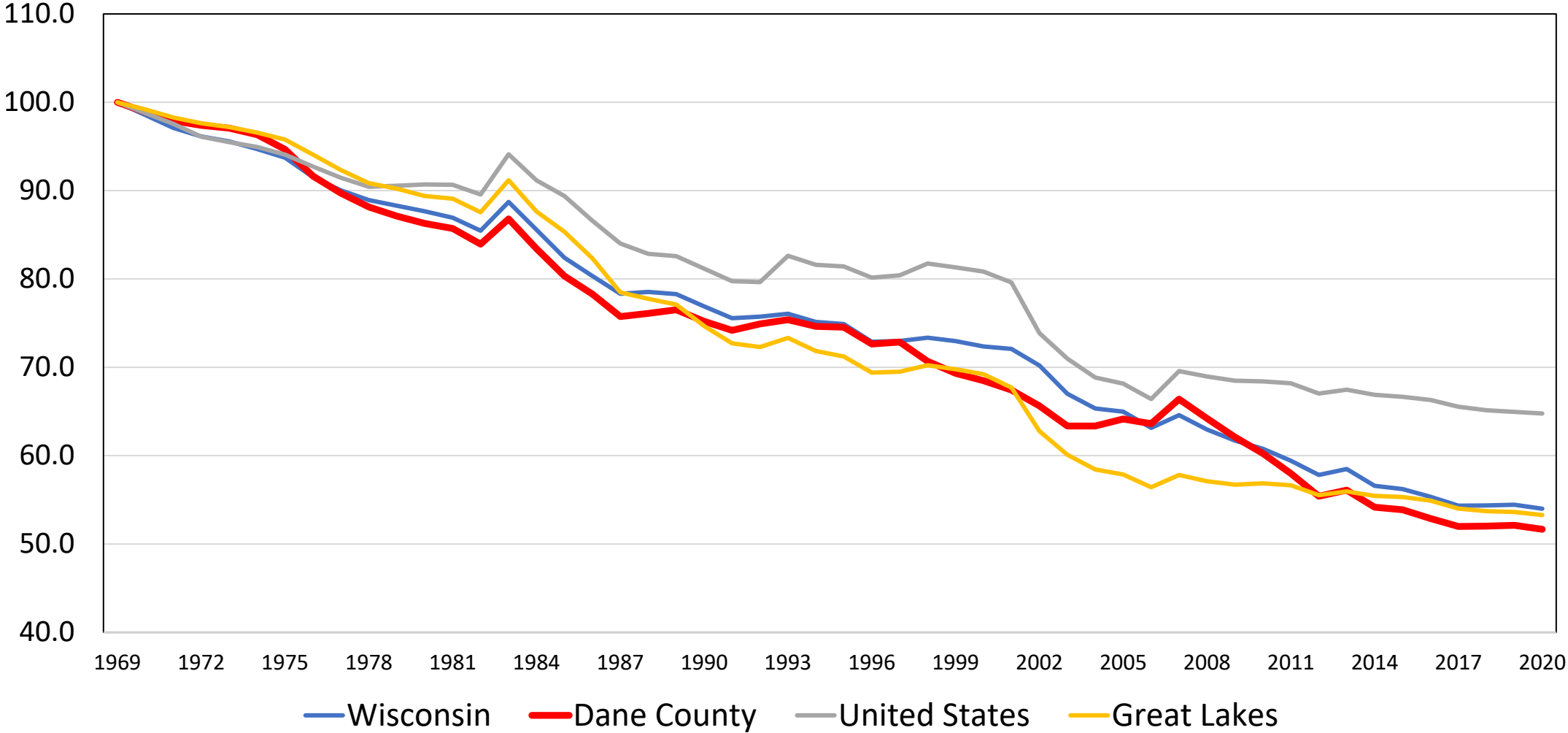
Farm Proprietors' Income Growth Index



Source: BEA REIS, calculations by the author.

Contribution of Agriculture to the Dane County Economy: Update 2019-2020

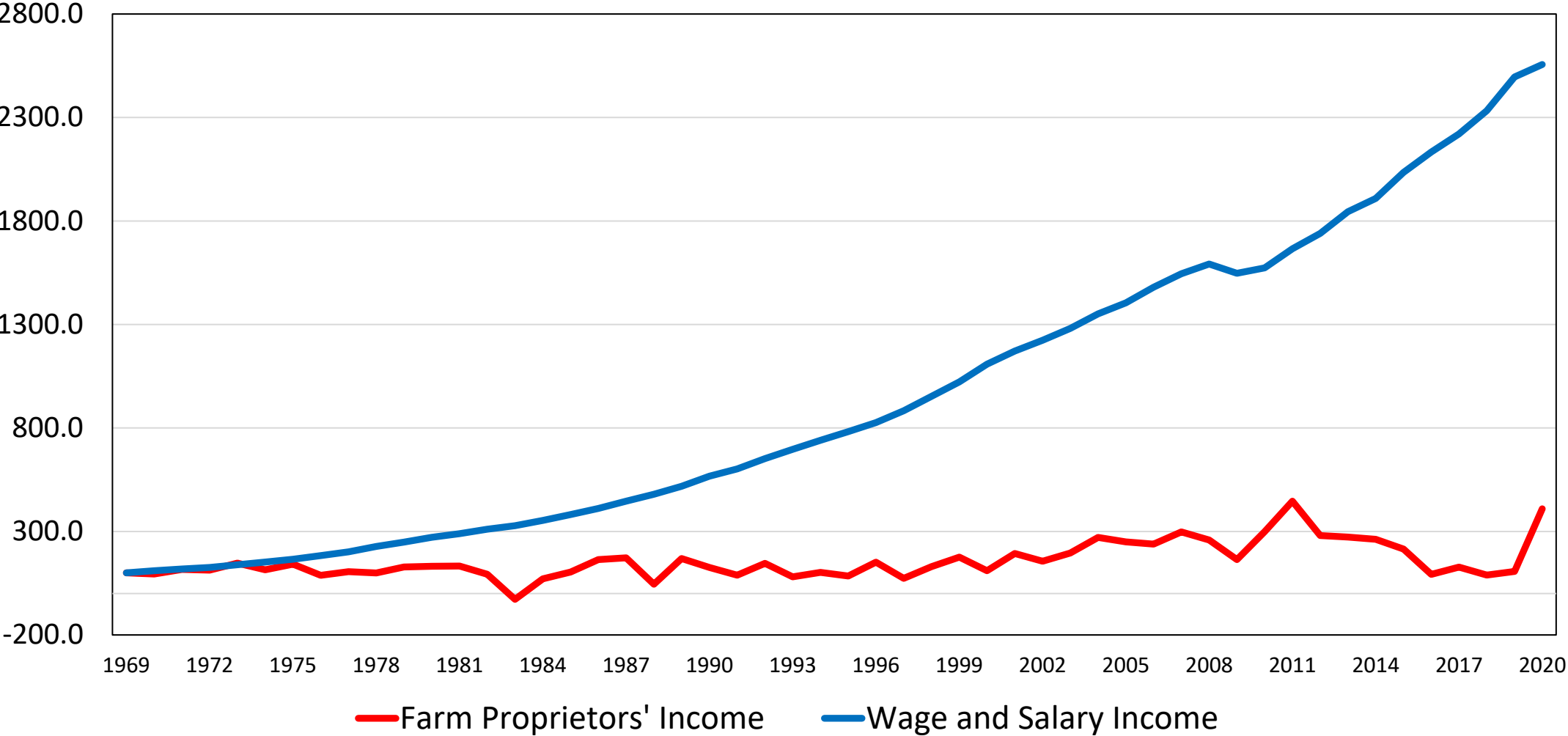
Farm Proprietors' Employment Growth Index



Source: BEA REIS, calculations by the author.

Contribution of Agriculture to the Dane County Economy: Update 2019-2020

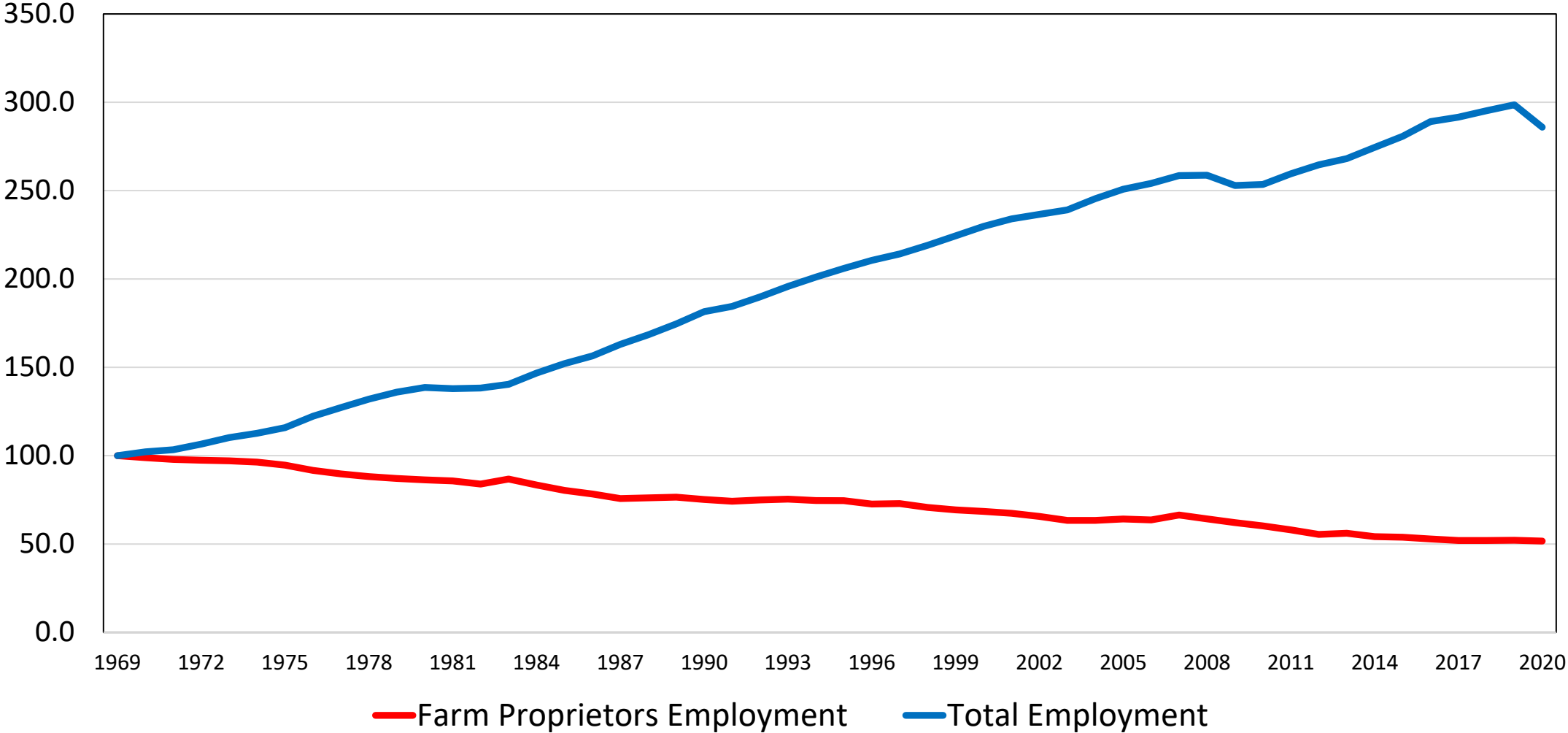
Dane County Income Growth Index



Source: BEA REIS, calculations by the author.

Contribution of Agriculture to the Dane County Economy: Update 2019-2020

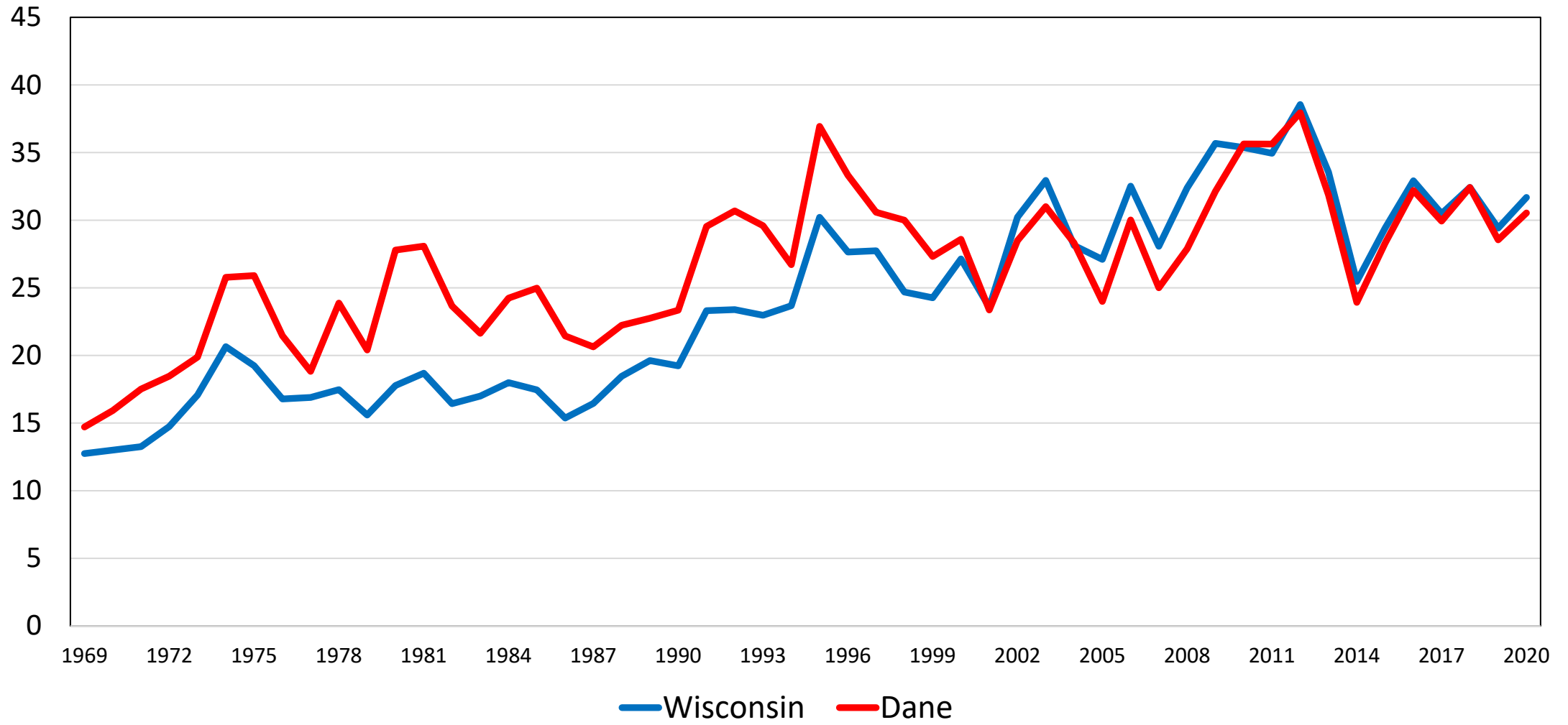
Dane County Employment Growth Index



Source: BEA REIS, calculations by the author.

# Contribution of Agriculture to the Dane County Economy: Update 2019-2020

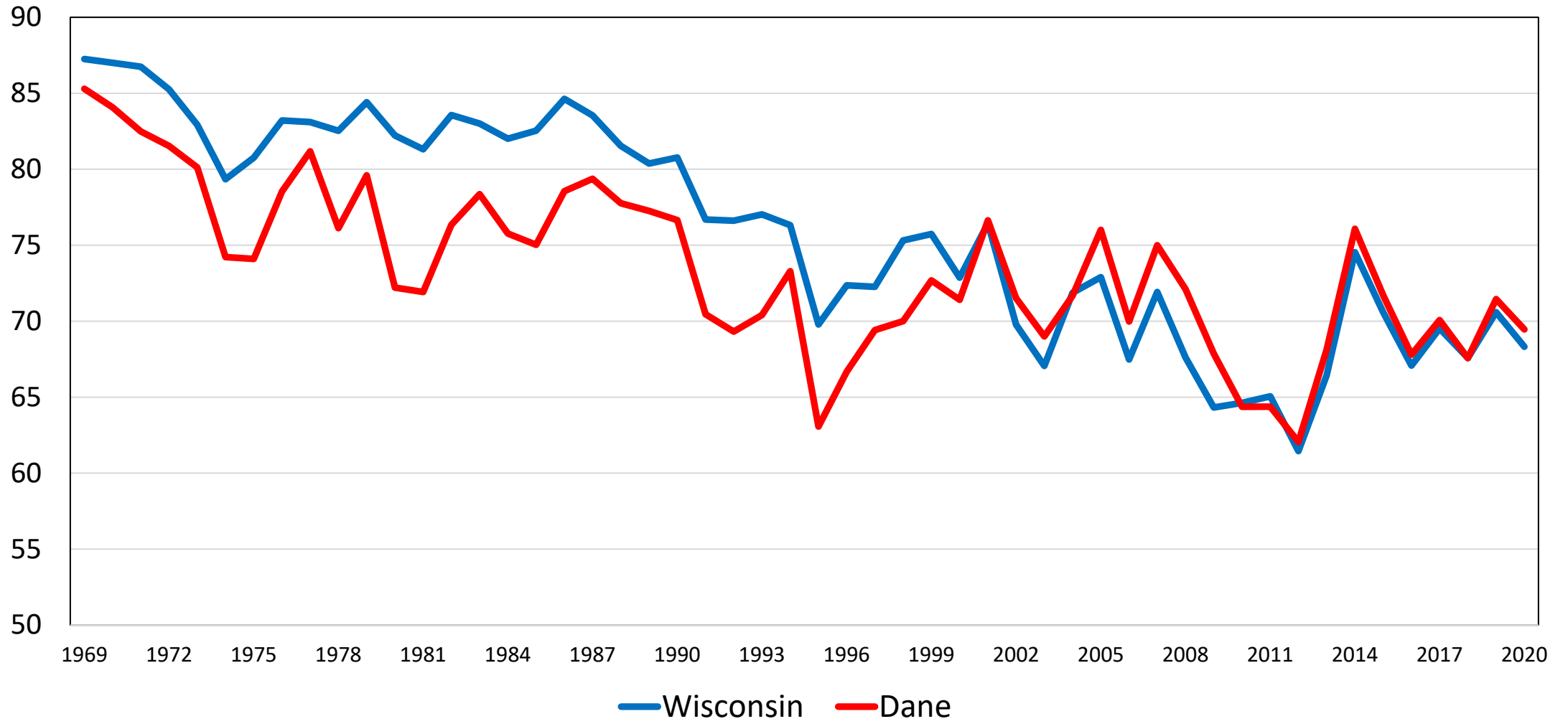
## Share of Cash Receipts from Crops



Source: BEA REIS, calculations by the author.

# Contribution of Agriculture to the Dane County Economy: Update 2019-2020

## Share of Cash Receipts from Livestock and Products

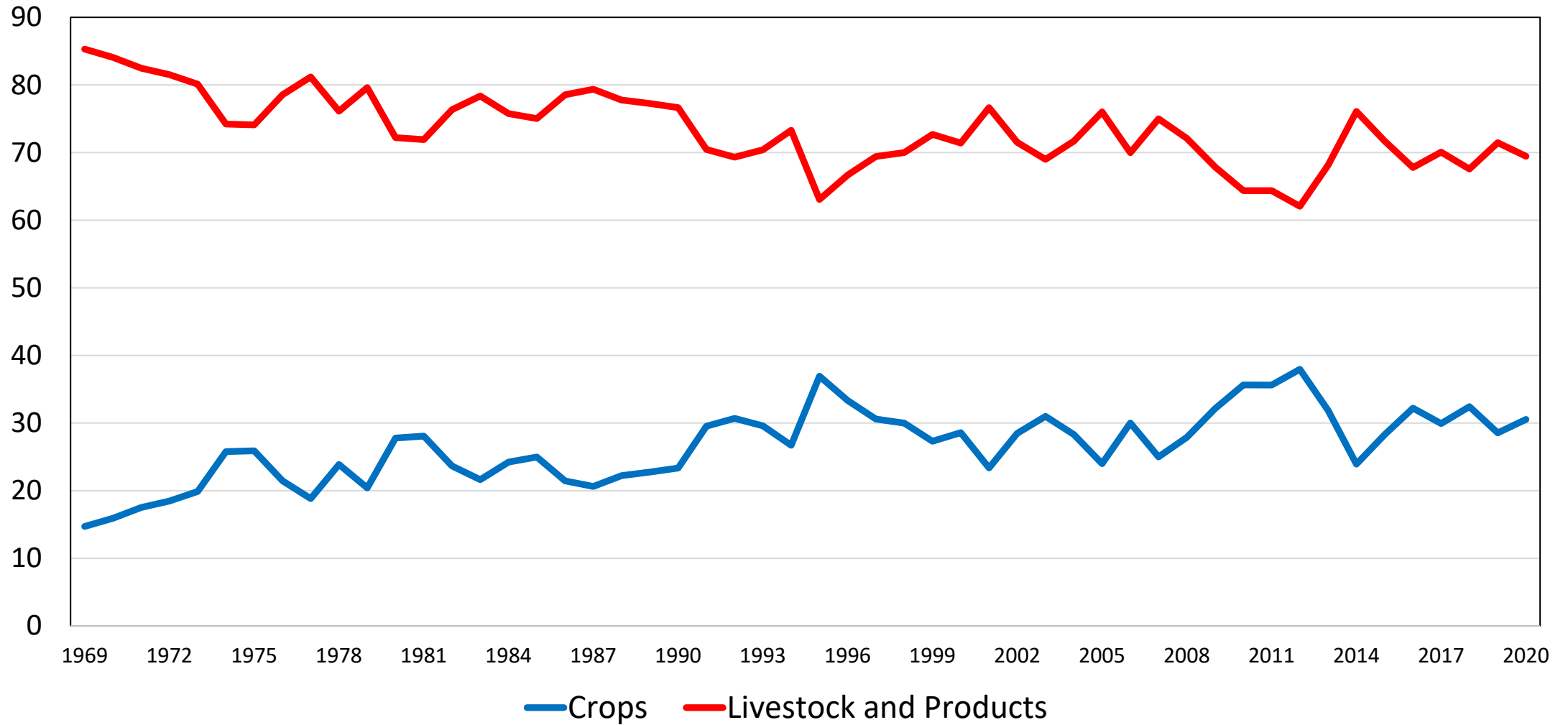


Source: BEA REIS, calculations by the author.



# Contribution of Agriculture to the Dane County Economy: Update 2019-2020

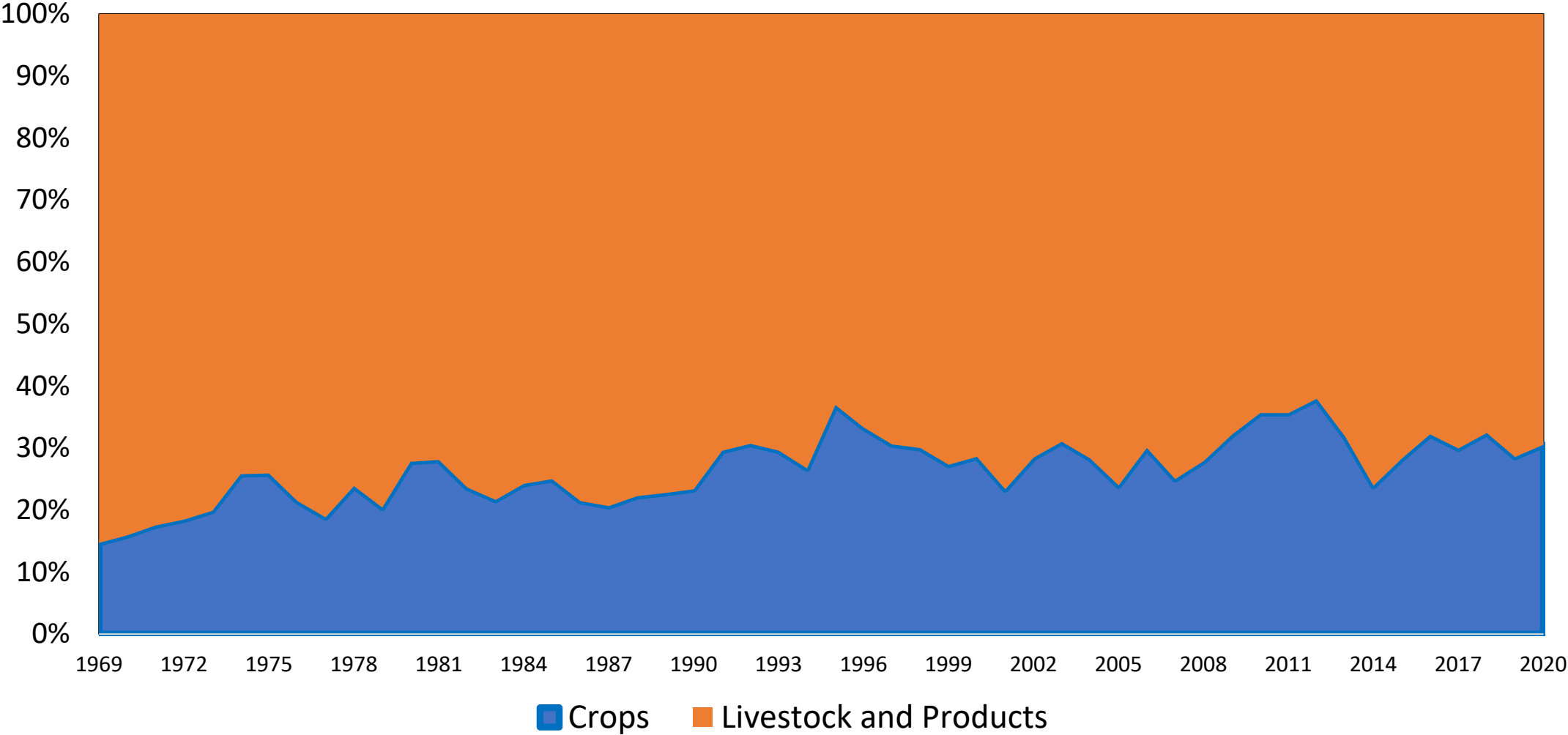
## Share of Cash Receipts Dane County



Source: BEA REIS, calculations by the author.

Contribution of Agriculture to the Dane County Economy: Update 2019-2020

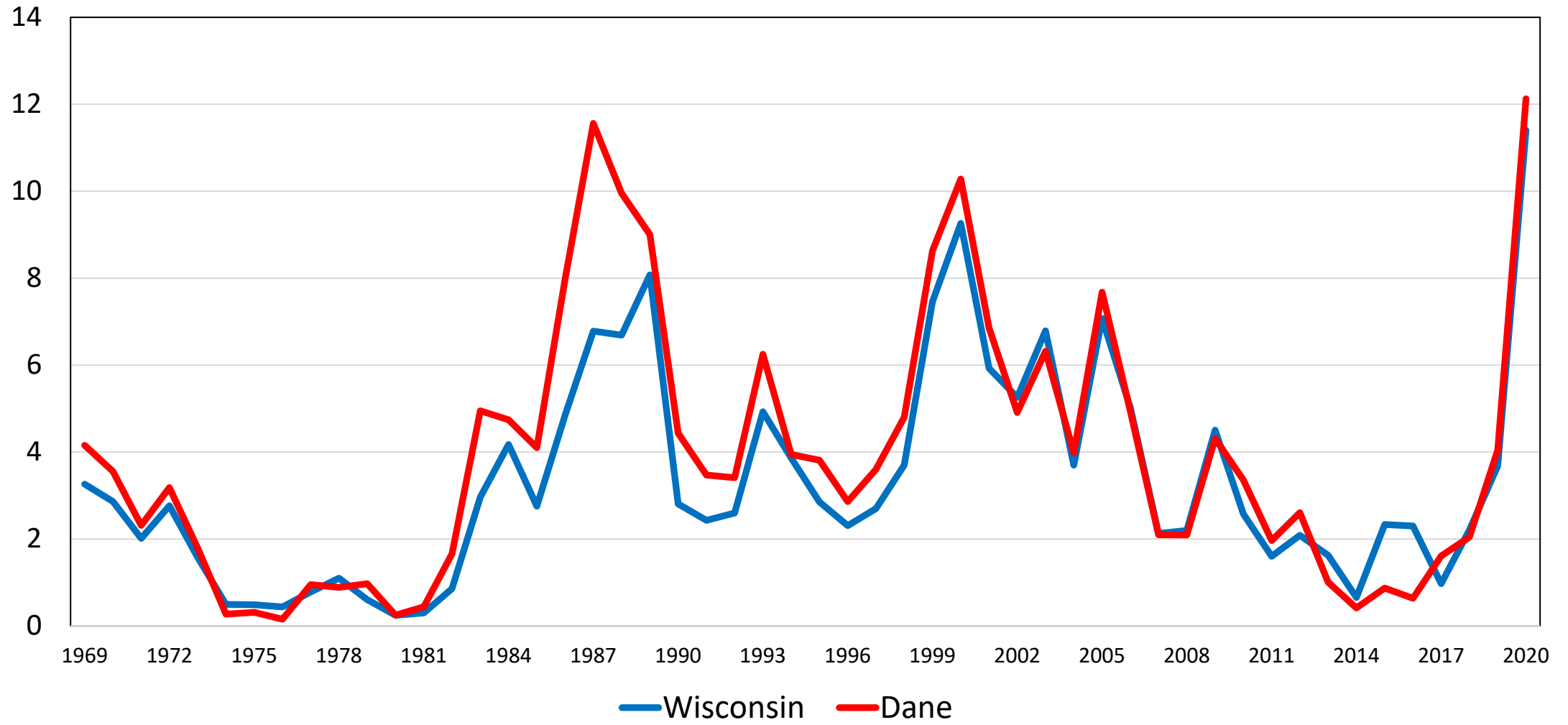
Share of Cash Receipts Dane County



Source: BEA REIS, calculations by the author.

# Contribution of Agriculture to the Dane County Economy: Update 2019-2020

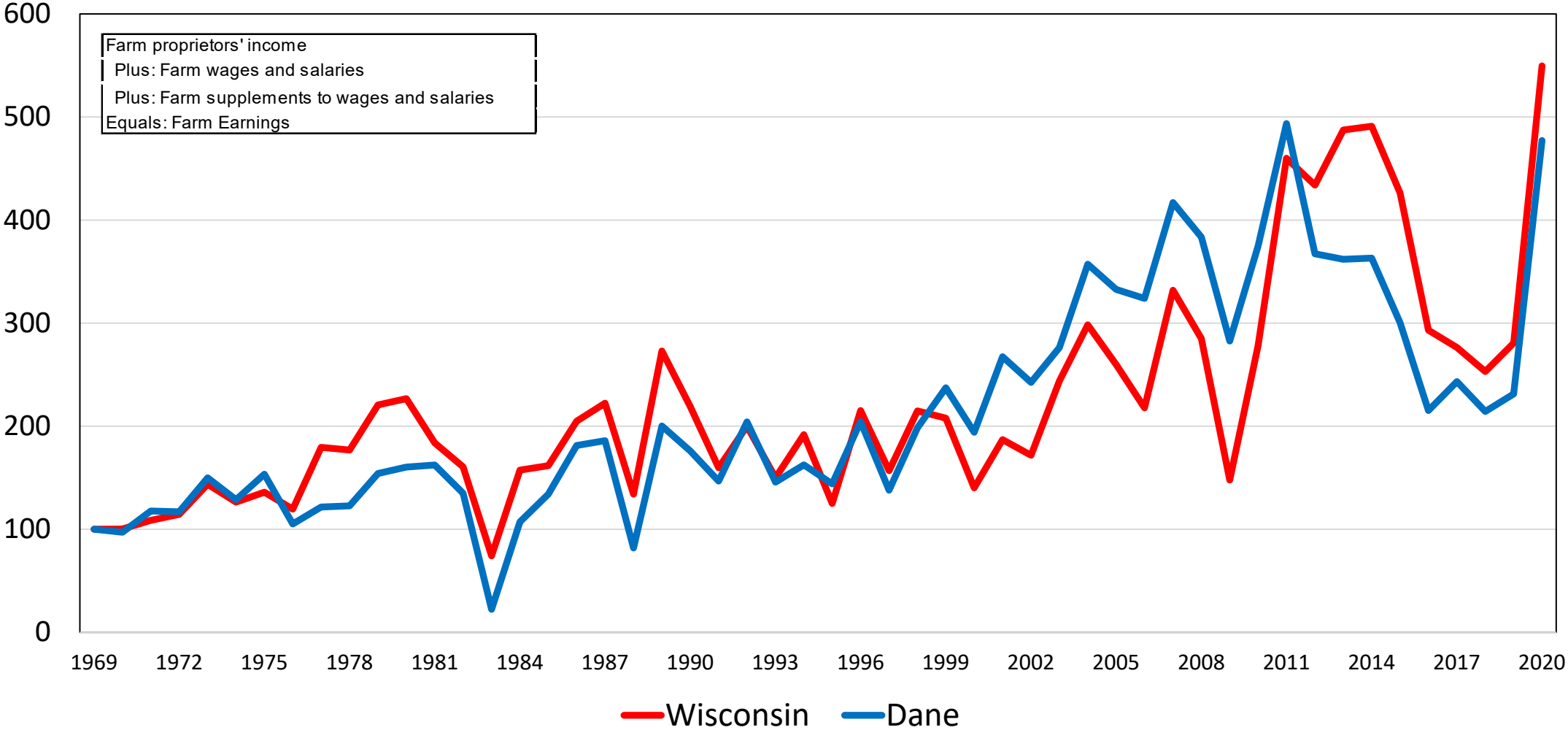
## Share of Cash Receipts and Other Income from Government Payments Dane County



Source: BEA REIS, calculations by the author.

Contribution of Agriculture to the Dane County Economy: Update 2019-2020

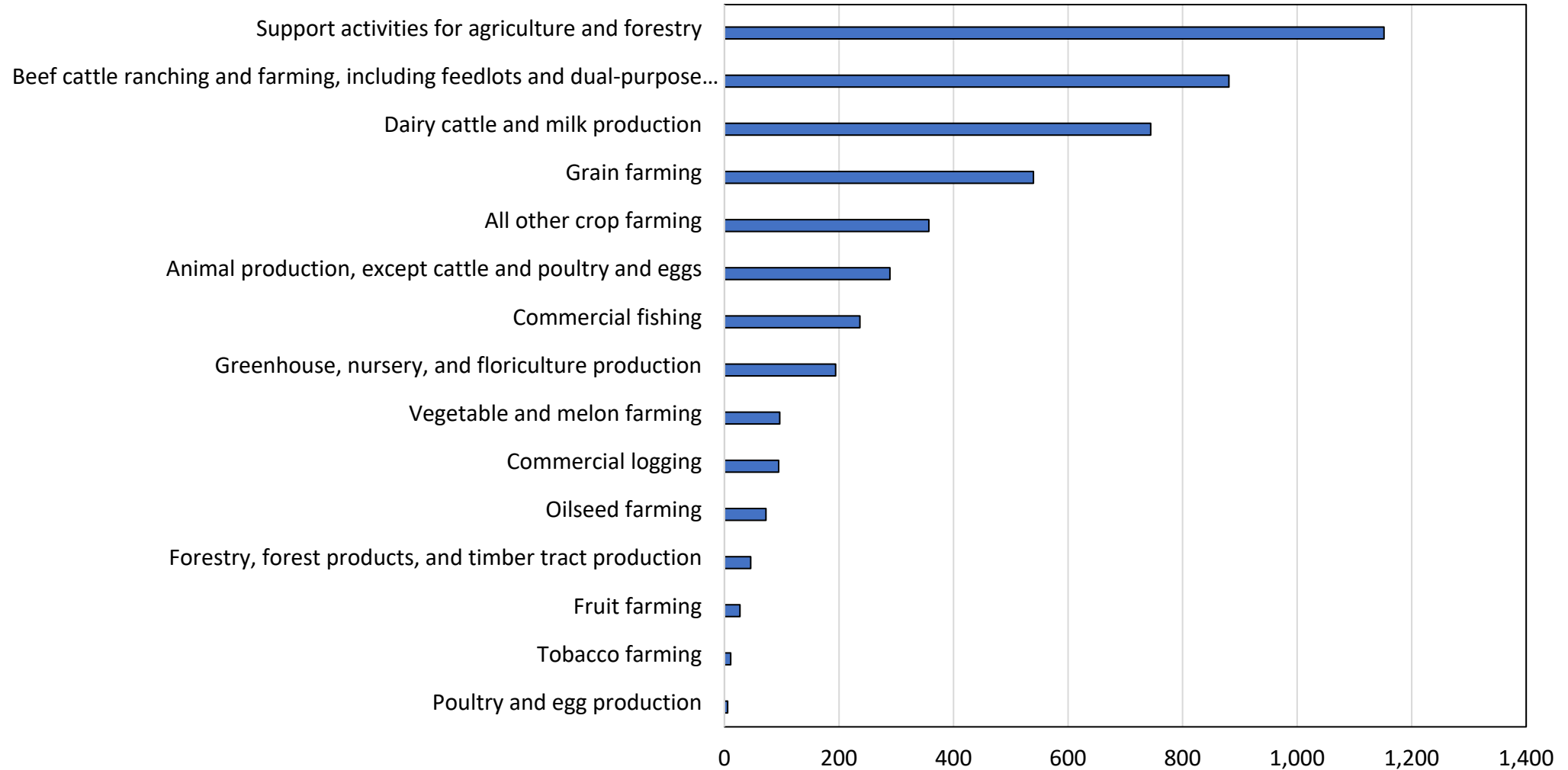
Farm Earnings Growth Index



Source: BEA REIS, calculations by the author.

# Contribution of Agriculture to the Dane County Economy: Update 2019-2020

## Dane County Farm Sector Employment (2019)

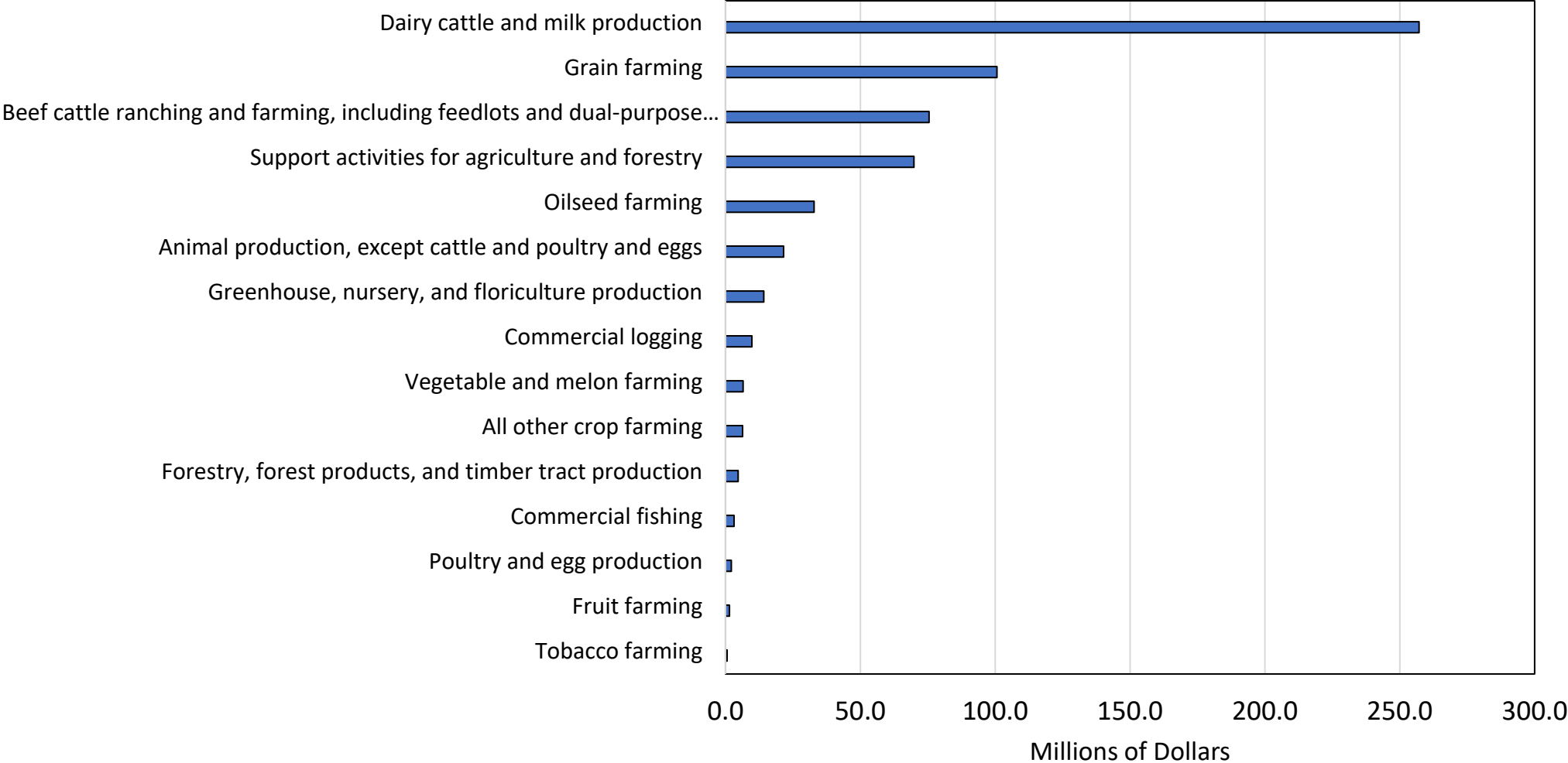


Source: IMPLAN.



# Contribution of Agriculture to the Dane County Economy: Update 2019-2020

## Dane County Farm Sector Industry Sales (2019)

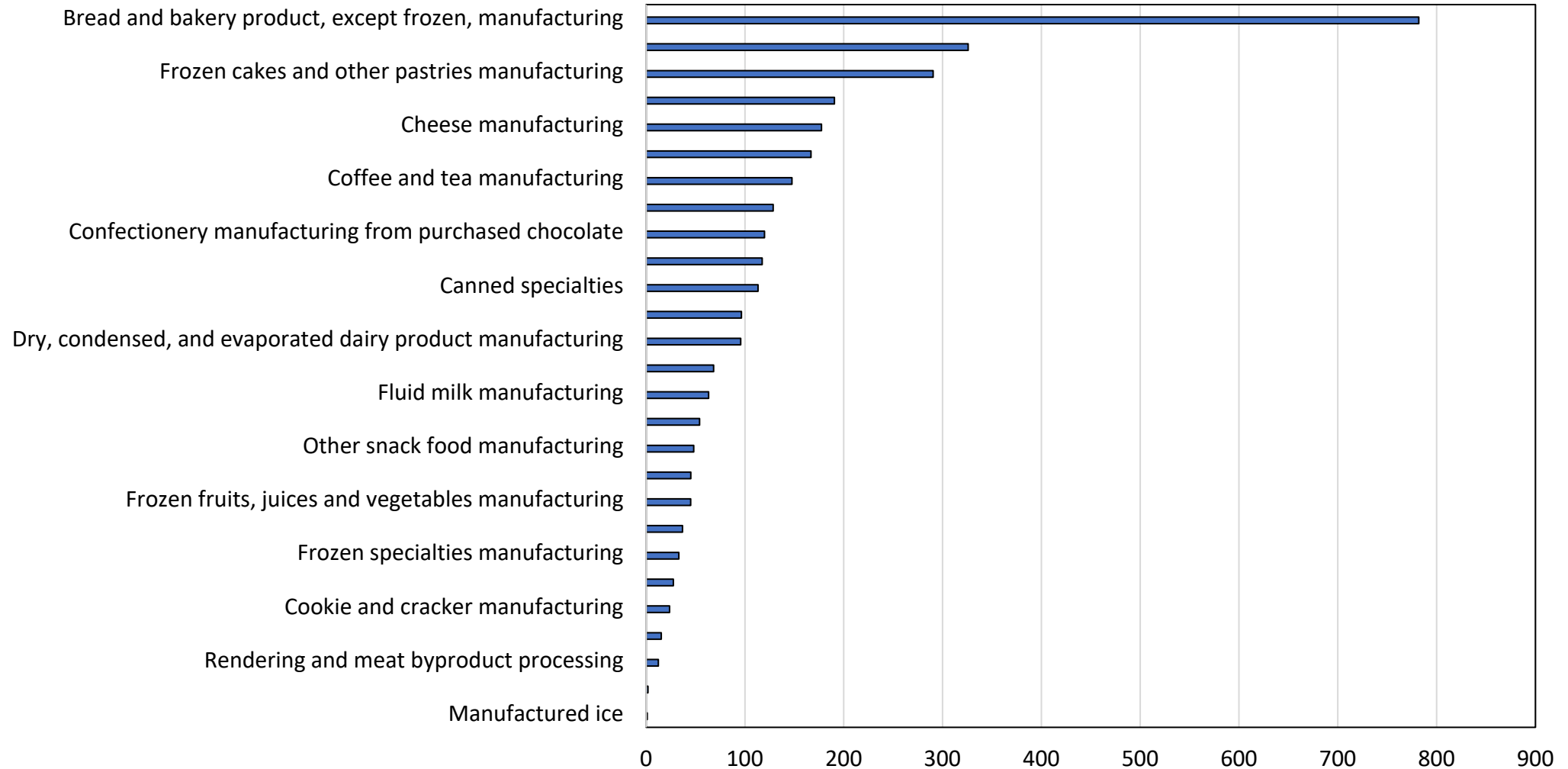


Source: IMPLAN.



# Contribution of Agriculture to the Dane County Economy: Update 2019-2020

## Dane County Food Processing Sector Employment (2019)

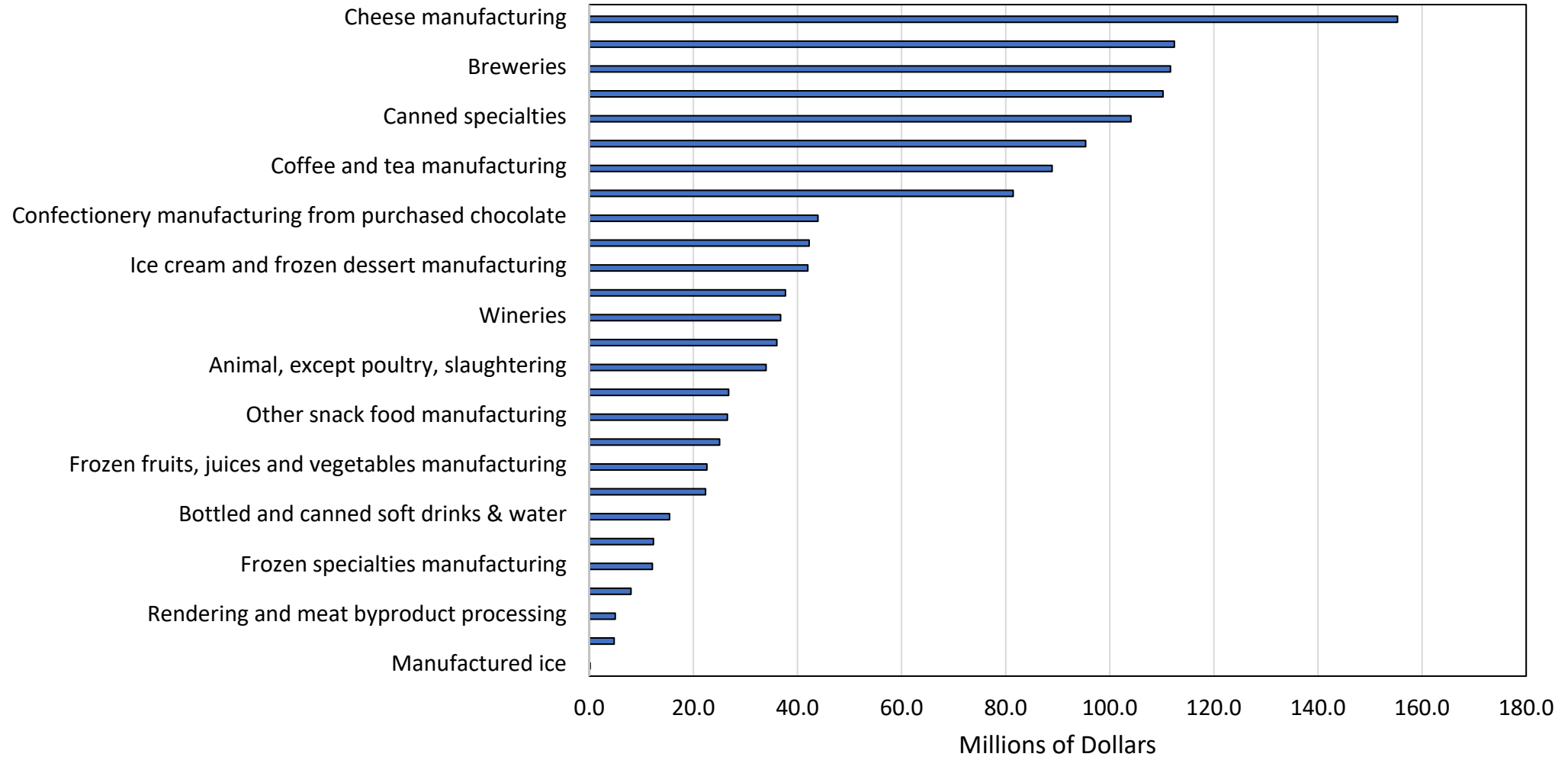


Source: IMPLAN.



# Contribution of Agriculture to the Dane County Economy: Update 2019-2020

## Dane County Food Processing Sector Industry Sales (2019)



Source: IMPLAN.



## Contribution of Agriculture to the Dane County Economy: Update 2019-2020

### On Farm Dane County 2019

	Employment	Labor Income (MM\$)	Total Income (MM\$)	Industry Sales (MM\$)
Direct	4,716	\$ 154.6	\$ 255.1	\$ 593.3
Indirect	844	\$ 53.2	\$ 104.3	\$ 210.6
Induced	1,102	\$ 55.8	\$ 102.4	\$ 169.4
Total	6,663	\$ 263.6	\$ 461.8	\$ 973.2
Multiplier	1.413	1.705	1.810	1.640
Share of County	1.5%	0.9%	0.9%	1.2%



## Contribution of Agriculture to the Dane County Economy: Update 2019-2020

### Food Processing Dane County 2019

	Employment	Labor Income (MM\$)	Total Income (MM\$)	Industry Sales (MM\$)
Direct	3,229	\$ 186.5	\$ 321.6	\$ 1,292.1
Indirect	2,790	\$ 168.7	\$ 261.5	\$ 519.5
Induced	1,599	\$ 80.8	\$ 148.3	\$ 244.8
Total	7,618	\$ 435.9	\$ 731.3	\$ 2,056.4
Multiplier	2.359	2.337	2.274	1.592
Share of County	1.7%	1.5%	2.5%	2.5%

## Contribution of Agriculture to the Dane County Economy: Update 2019-2020

### On Farm and Food Processing Dane County 2019

	Employment	Labor Income (MM\$)	Total Income (MM\$)	Industry Sales (MM\$)
Direct	7,945	\$ 341.1	\$ 576.7	\$ 1,885.4
Indirect	3,634	\$ 221.9	\$ 365.7	\$ 730.2
Induced	2,701	\$ 136.5	\$ 250.6	\$ 414.2
Total	14,281	\$ 699.5	\$ 1,193.1	\$ 3,029.7
Multiplier	1.798	2.051	2.069	1.607
Share of County	3.2%	2.4%	3.4%	3.7%



## Contribution of Agriculture to the Dane County Economy: Update 2019-2020

### State and Local Tax Generation Dane County 2019

	On Farm	Food Processing	On Farm and Food Processing
Sales Taxes	\$ 3.3	\$ 17.8	\$ 21.1
Property Taxes	\$ 3.7	\$ 19.6	\$ 23.2
Income Taxes	\$ 6.7	\$ 9.7	\$ 16.4
Other	\$ 4.2	\$ 7.4	\$ 11.7
Total	\$ 17.9	\$ 54.5	\$ 72.4