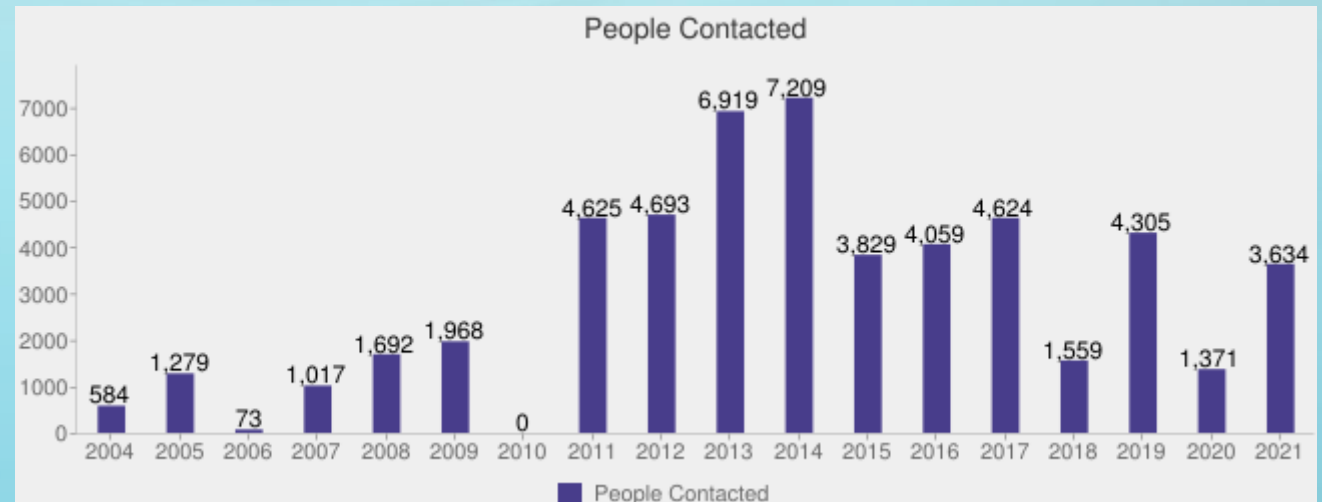
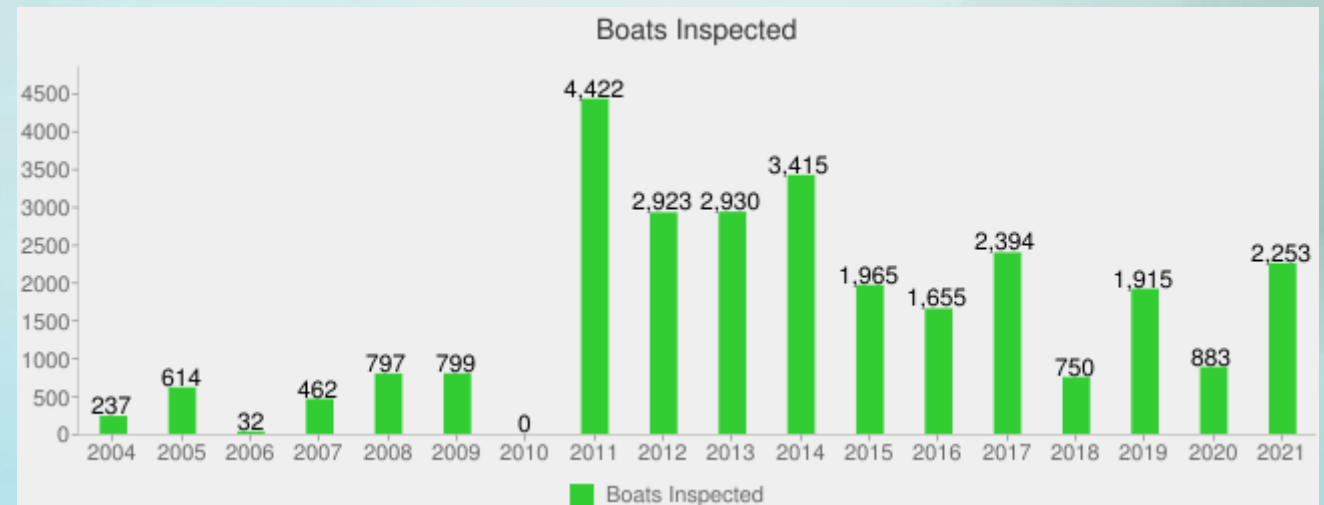


Invasive Species



Clean Boats Clean Waters (CBCW)



Indian Lake Carp Removals



2019 Estimate of 15,700 Carp

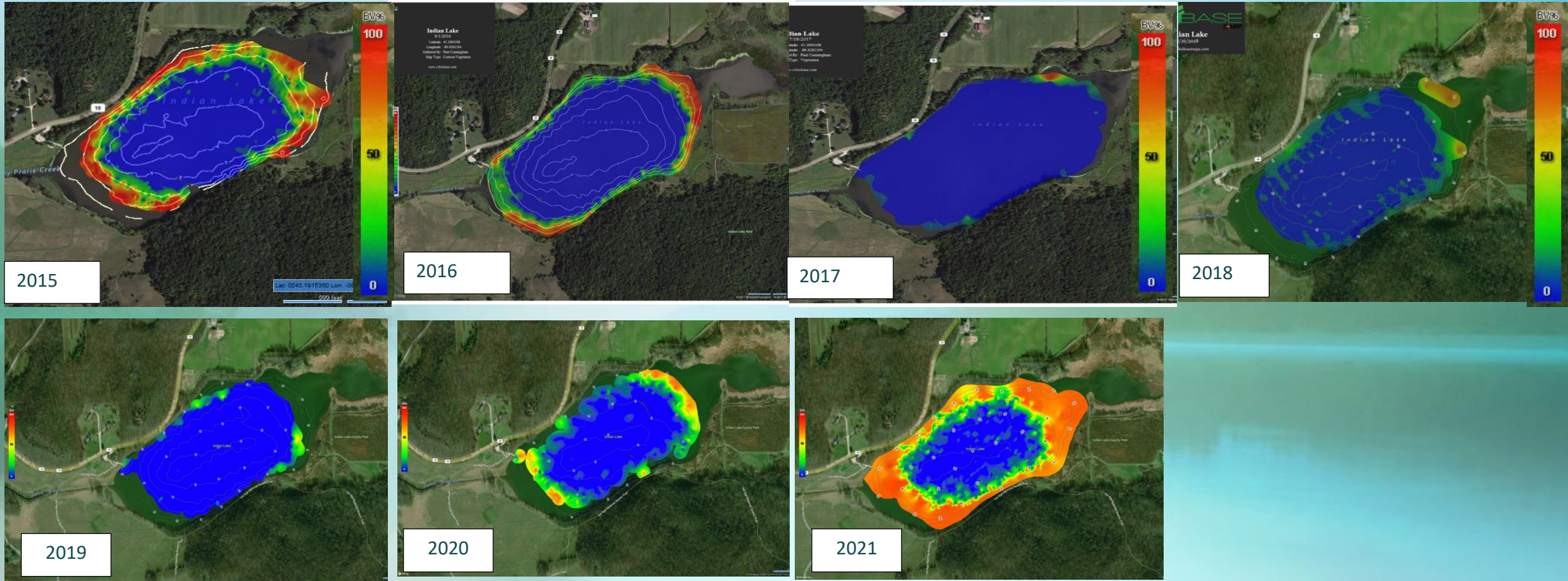
2020 removals=5,369

2021 removals=3,286

3,434-7,014 remain

Recruitment is null!

Indian Lake submerged aquatic vegetation density heat maps for 2015-2021. Color ranges show % plant biovolume where red depicts 100% and blue depicts 0 % biovolume. Plant biovolume refers to the percentage of the water column taken up by vegetation. Indian Lake fish community was treated with Rotenone in March of 2015 and subsequently retreated in the fall of 2018. A limited number of adult carp immigration from downstream combined with limited centrarchid re-stocking resulted an open niche and strong recruitment of YOY carp in summers (2015 and 2019) following each treatment.





2020 Aquatic Plant Management Harvest Report

Annual Mechanical Harvest Summary (5/26/2020 to 9/15/2020)

	Hours	(%)	Loads*	(%)	Wet Weight (t)**	Dry Weight (t)**	Phosphorus(lbs)**
Kegonsa							
48 Daily Logs	303.0	6.8%	120.5	5.6%	554	55	317
Mendota							
154 Daily Logs	962.2	21.6%	636.1	29.8%	2,926	293	1,671
Monona							
242 Daily Logs	1,593.5	35.7%	567.0	26.6%	2,608	261	1,489
Stewart							
3 Daily Logs	14.5	0.3%	8.5	0.4%	39	4	22
Waubesa							
69 Daily Logs	429.0	9.6%	158.0	7.4%	727	73	415
Yahara River							
165 Daily Logs	962.5	21.6%	554.0	25.9%	2,548	255	1,455
Yahara River Lower							
34 Daily Logs	199.0	4.5%	91.0	4.3%	419	42	239
Total	4,464		2,135		9,821	982	5,608
Private Deposit Site Loads				Public Deposit Site Loads			
All			2	Other	19	Park Site	2,101
				Westport	0	Highway 12	14

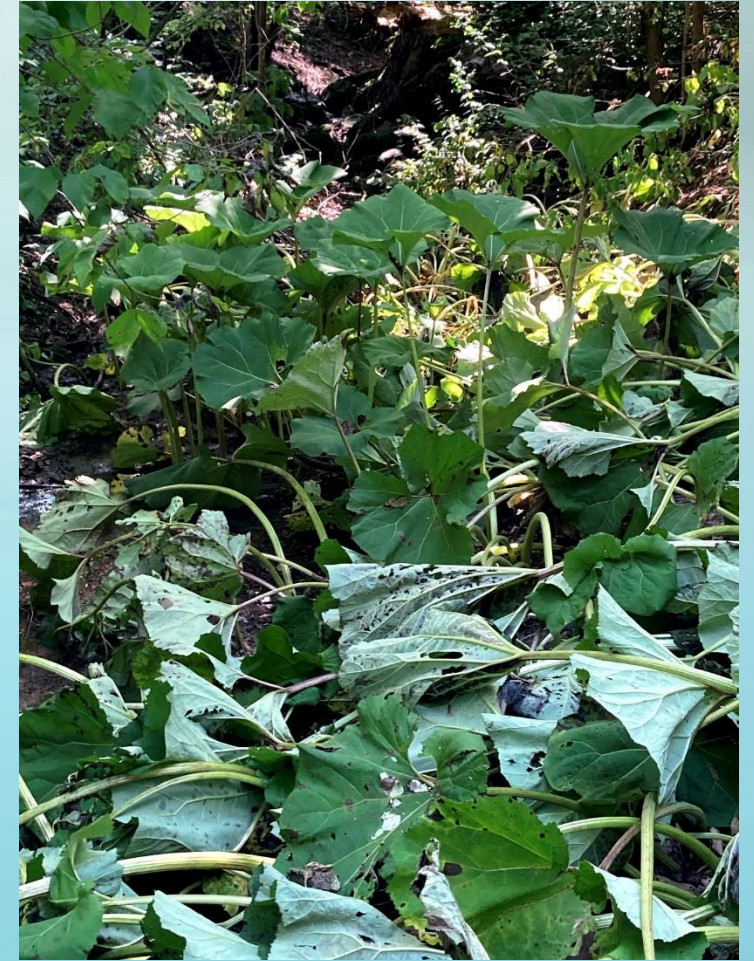


2021 Aquatic Plant Management Harvest Report

Annual Mechanical Harvest Summary (4/27/2021 to 10/12/2021)

	Hours	(%)	Loads*	(%)	Wet Weight (t)**	Dry Weight (t)**	Phosphorus(lbs)**
Indian Lake							
29 Daily Logs	178.8	3.6%	251.5	9.4%	1,157	116	661
InterLake							
7 Daily Logs	41.5	0.8%	7.5	0.3%	35	3	20
Jenni & Kyle Preserve							
2 Daily Logs	16.0	0.3%	8.0	0.3%	37	4	21
Kegonsa							
70 Daily Logs	451.0	9.1%	217.5	8.1%	1,001	100	571
Mendota							
265 Daily Logs	1,702.0	34.3%	781.5	29.1%	3,595	359	2,053
Monona							
343 Daily Logs	2,097.5	42.3%	1,133.0	42.2%	5,212	521	2,976
Waubesa							
48 Daily Logs	312.5	6.3%	176.0	6.6%	810	81	462
Wingra							
15 Daily Logs	83.5	1.7%	87.0	3.2%	400	40	229
Yahara River							
10 Daily Logs	54.5	1.1%	16.0	0.6%	74	7	42
Yahara River Lower							
4 Daily Logs	22.0	0.4%	9.0	0.3%	41	4	24
Total	4,959		2,687		12,360	1,236	7,058
Private Deposit Site Loads				Public Deposit Site Loads			
All			462	Other	172	Park Site	2,054
				Westport	0	Highway 12	0

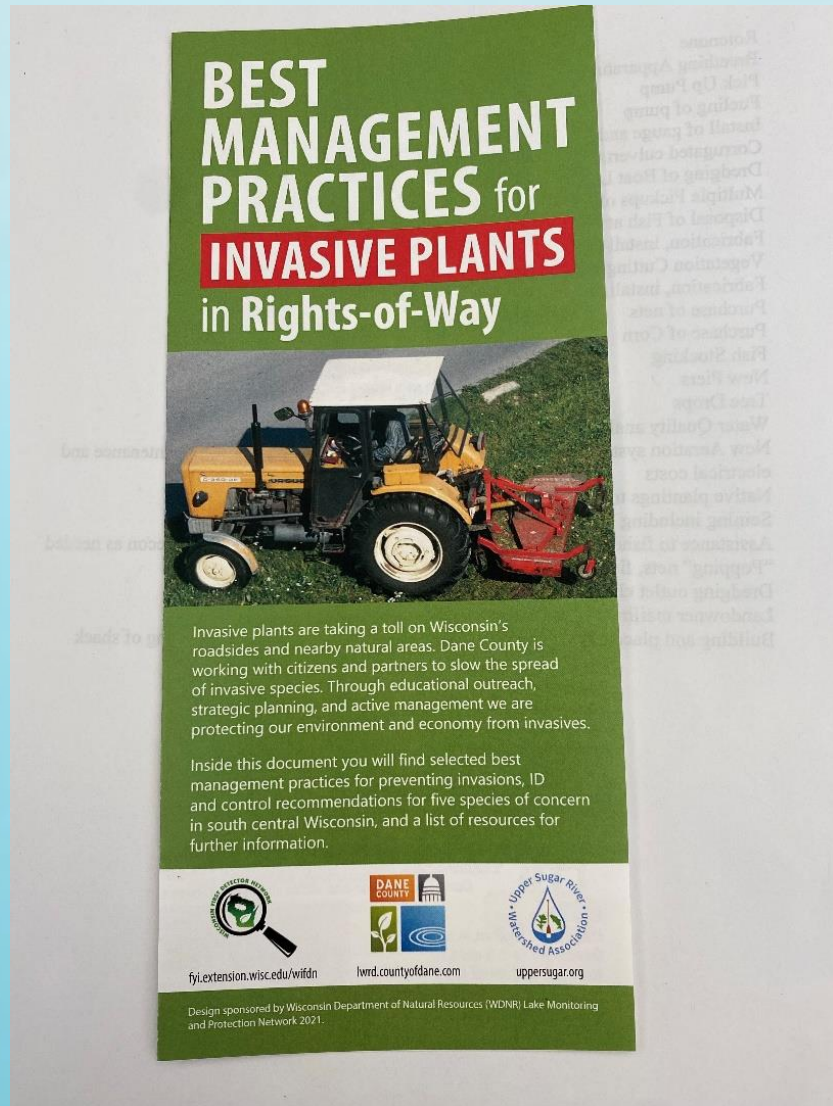
Rapid Response-Yellow Floating Heart/Butterfly Dock



Purple Loosestrife Biocontrol (PLS)



Trifold Guide for Municipalities



- Mowing/Treatment Options
- Identification
- 2022 Training
- Distribution Statewide



Zebra Mussel-Restricted Species



Quagga Mussel-Prohibited Species

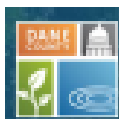
Filter Feeders-Can compete with fish and other aquatic life
Water Clarity and nutrient source-Primarily Phosphorus
Introduced into Lake Erie in 1980's
Zebes statewide-Quaggas in Lake Michigan and Mississippi River



Upper Sugar River Watershed Association

via Lake Monitoring Protection Network

Dane County Invasive Species Records by Township 2021 for



Dane County Land & Water Resources Department

Links to active Google Maps by region:

West	https://www.google.com/maps/d/u/0/edit?mid=1vS-A3DtR750LiOpCvKDC03oMxUfhwQP&usp=sharing
North Central	https://www.google.com/maps/d/u/0/edit?mid=1yn0aJBORrDR0sPVhTyiDqZMM0Y6URp89&usp=sharing
East	https://www.google.com/maps/d/u/0/edit?mid=1qTfHsDJuKKAz1pyEPC5jz8oBemWEyk&usp=sharing
South Central	https://www.google.com/maps/d/u/0/edit?mid=1O4JV-ZOTpVBFnuXnvPAf3rtmZyElx7L&usp=sharing
Madison map	https://www.google.com/maps/d/u/0/edit?mid=1pH7EG1Y4nBfmjCJ82ArgFRXnWY-GPLd0&usp=sharing

Township links to map page

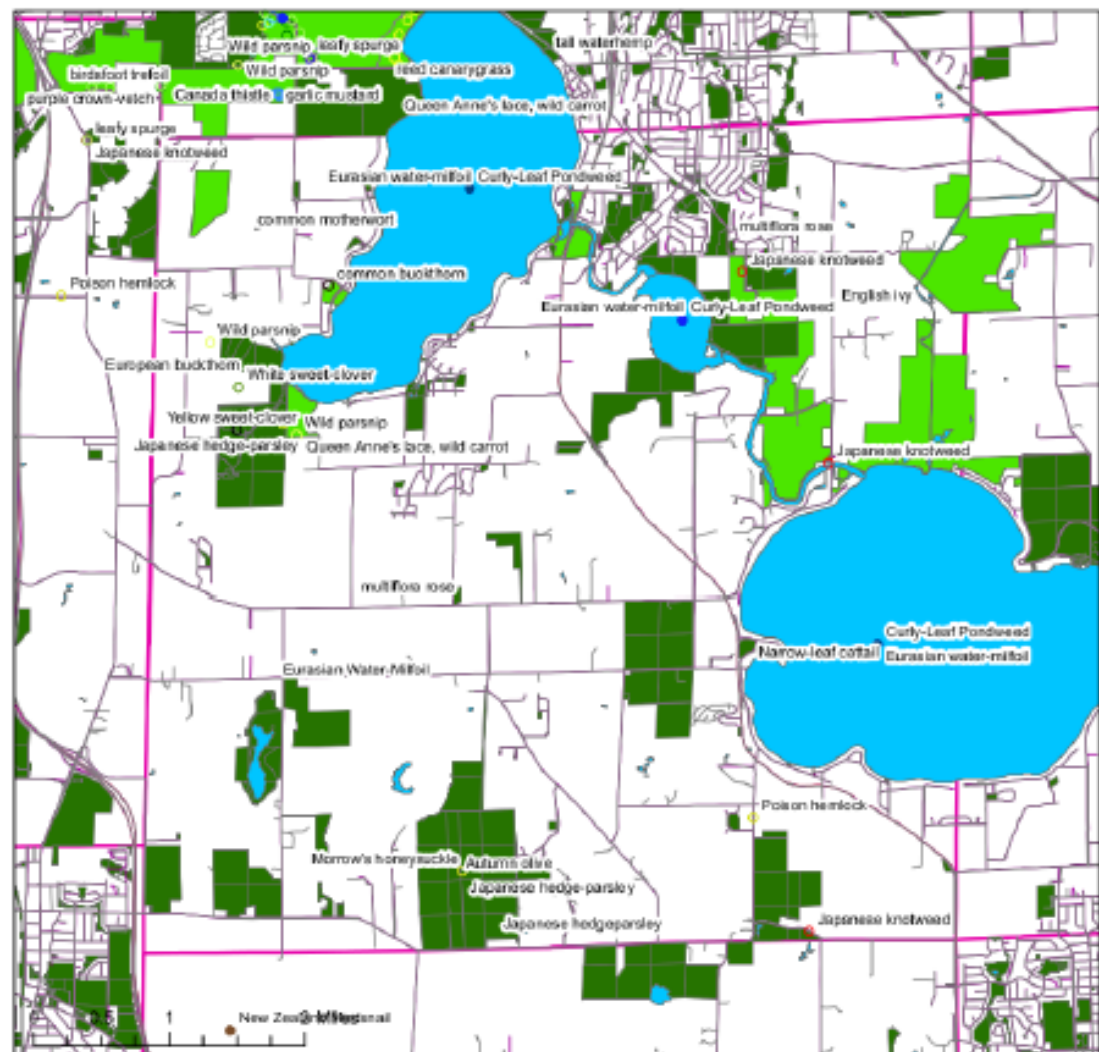
40306	Perry
40307	Primrose
40308	Montrose
40309	Oregon
40310	Rutland
40311	Dunkirk
40312	Albion
40606	Bluemounds
40607	Springdale
40608	Vernona
40609	Fitchburg
40610	Dunn
40611	Pleasant Springs
40612	Christiana
40706	Vermont
40707	Cross Plains
40708	Middleton
40709	Madison

40710	Blooming Grove
40711	Cottage Grove
40712	Deerfield
40806	Black Earth
40807	Berry
40808	Springfield
40809	West Port
40810	Burke
40811	Sun Prairie
40812	Medina
40906	Mosman
40907	Roxbury
40908	Dane
40909	Vienna
40910	Windsor
40911	Bristol
40912	York

Invasive Species Records Map by Township, Dane County, Wisconsin

Direction Township Range (DTR): 40610

Township Name: Dunn



Legend

Amur Maple	Creeping Thistle	Greater Celandine	Leafy Spurge	Purple Crown-Vetch	Dane County Park System
Bindweed	Curly-leaf Pondweed	Golden Plover	Low Smartweed	Purple Loosestrife	Public Lands
Bradford Pear	Cutleaf Tassel	Japanese Barberry	Morrow's Honeysuckle	Spotted Knapweed	Dane County Township
Common Buckthorn	Dane's Rocket	Japanese Hedge Parley	New Zealand Mudsnail	White Sweet-clover	Townships outside of Dane County
Common Tansy	Eurasian Water-milfoil	Japanese Hops	Oriental Bittersweet	Wild Parsnip	
Gambel/Viburnum	Garlic Mustard	Japanese Knotweed	Poison Hemlock	Yellow Sweet-clover	

Note: Occurances are underreported. Check Eddmaps.org for latest, and to report new sites.

2022 Work

- Clean Boats Clean Waters)CBCW-Kegonsa and Waubesa
- LMPN (Lake Management and Protection Network) Grant-Continue Partnership with Upper Sugar River Watershed Assoc. (USRWA)
- Purple Loosestrife (PLS?)
- Exploring Options for Cherokee Phragmites Aerial Mapping and Treatment
- Municipal Workshop on ROW Mowing/Invasives
- Carp Removals on Indian Lake
- Multiple Other Core Services