

# Yahara Watershed Improvement Network (WINS)



# Yahara WINS



- The What, Why, and Who
- Progress so far
- Partner projects



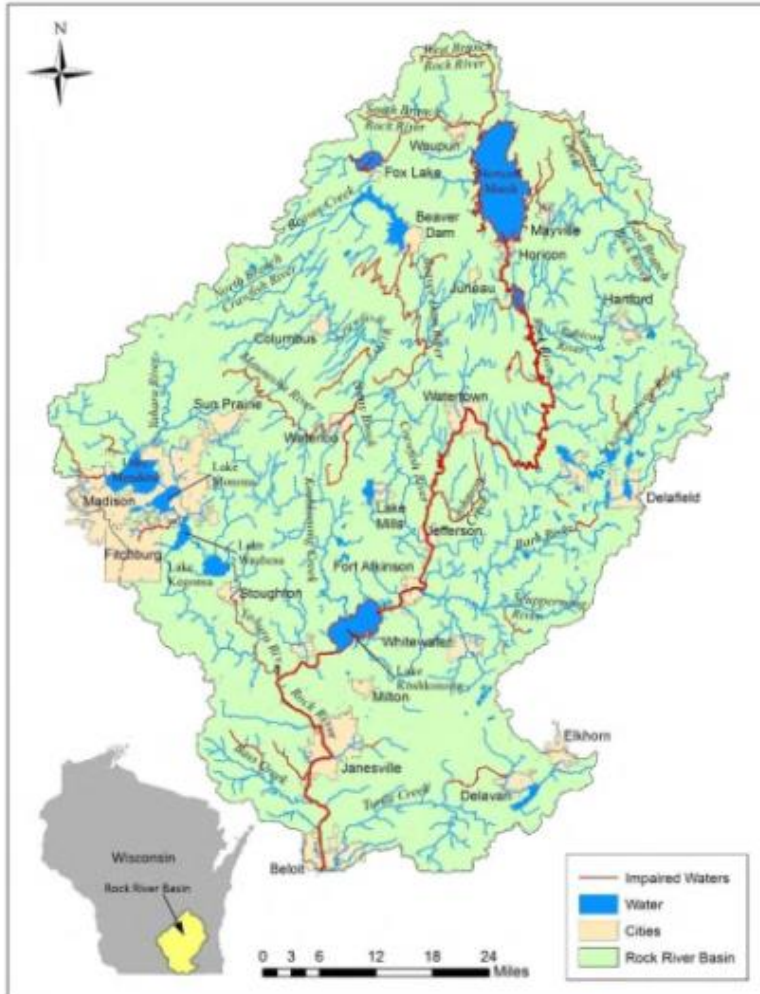
# What is Yahara WINS?



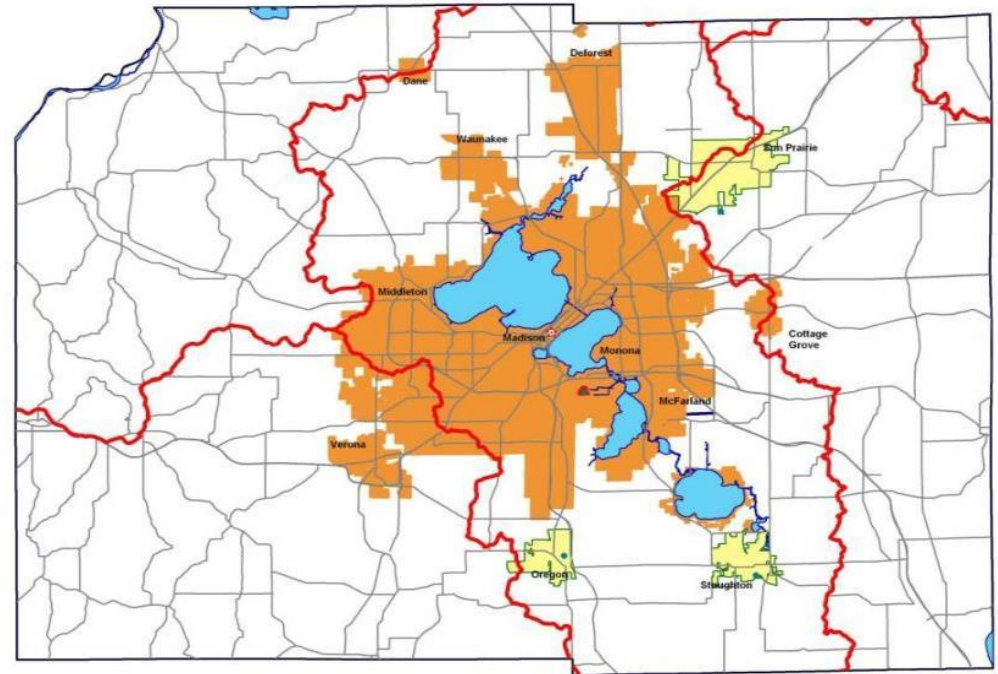
- Yahara WINS is an initiative to achieve clean water goals for the Yahara Watershed
  - Community partners collaborating on a strategy called **adaptive management**
  - All sources of phosphorus work together to reduce phosphorus runoff
  - More effective and less expensive than everyone working individually on separate solutions



# Why Yahara WINS?



## Rock River Total Maximum Daily Load (TMDL)



Madison Metropolitan Sewerage District



# Why Yahara WINS?



## TYPICAL MMSD PHOSPHORUS CONCENTRATIONS



# Who is Yahara WINS?



## Intergovernmental Agreement (IGA) Signatories

### Towns

Blooming Grove  
Burke  
Cottage Grove  
Dunn  
Middleton  
Westport

### Villages

Cottage Grove  
DeForest  
Maple Bluff  
McFarland  
Shorewood Hills  
Waunakee  
Windsor

### Cities

Fitchburg  
Madison  
Middleton (City)  
Monona  
Stoughton  
Sun Prairie

### Others

Madison Metropolitan Sewerage District  
Village of Oregon WWTP  
Stoughton Utilities  
UW-Madison  
Wisconsin DNR

## Interested Parties

Clean Lakes Alliance

**Yahara Pride Farms**

River Alliance of Wisconsin

U.S. Geological Survey

U.S. EPA

Madison Gas & Electric

Yahara Lakes Association

**Dane County**

Friends of Pheasant Branch

Wisconsin Department of Agriculture, Trade and  
Consumer Protection

Friends of Badfish Creek

**Rock County**

**Columbia County**

**Bold** = Partner that has a funding agreement with Yahara WINS for conservation practice implementation.

## IGA Executive Committee Members

Martin Griffin - District (President)

Tom Wilson - Town of Westport (Vice President)

Greg Fries - City of Madison (Secretary)

Jeff Rau - Village of Oregon (Treasurer)

Judd Blau - Village of DeForest (At-large)

Laura Hicklin - Dane County

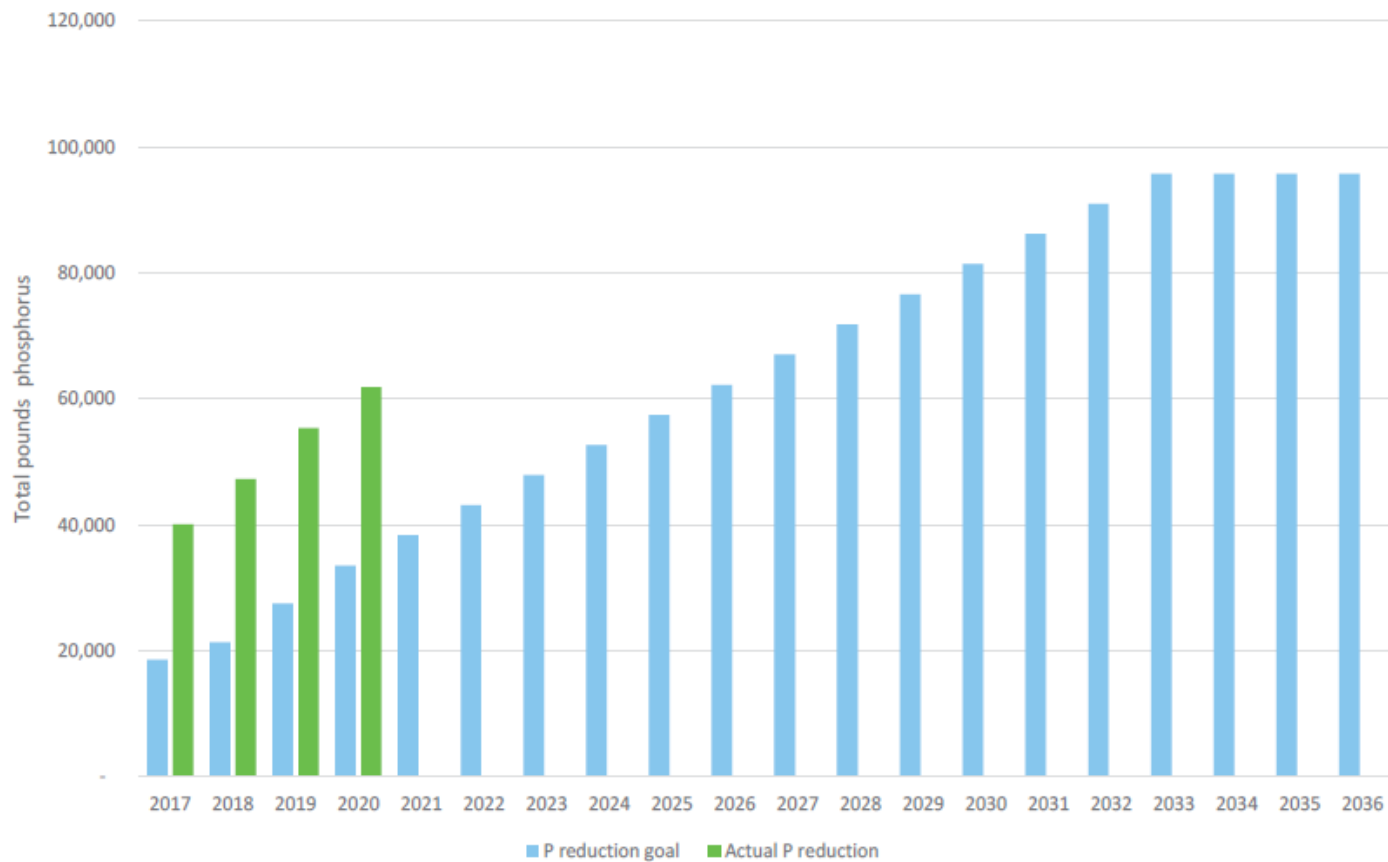
Bob Uphoff - Yahara Pride Farms

James Tye - Clean Lakes Alliance

# Yahara WINS progress



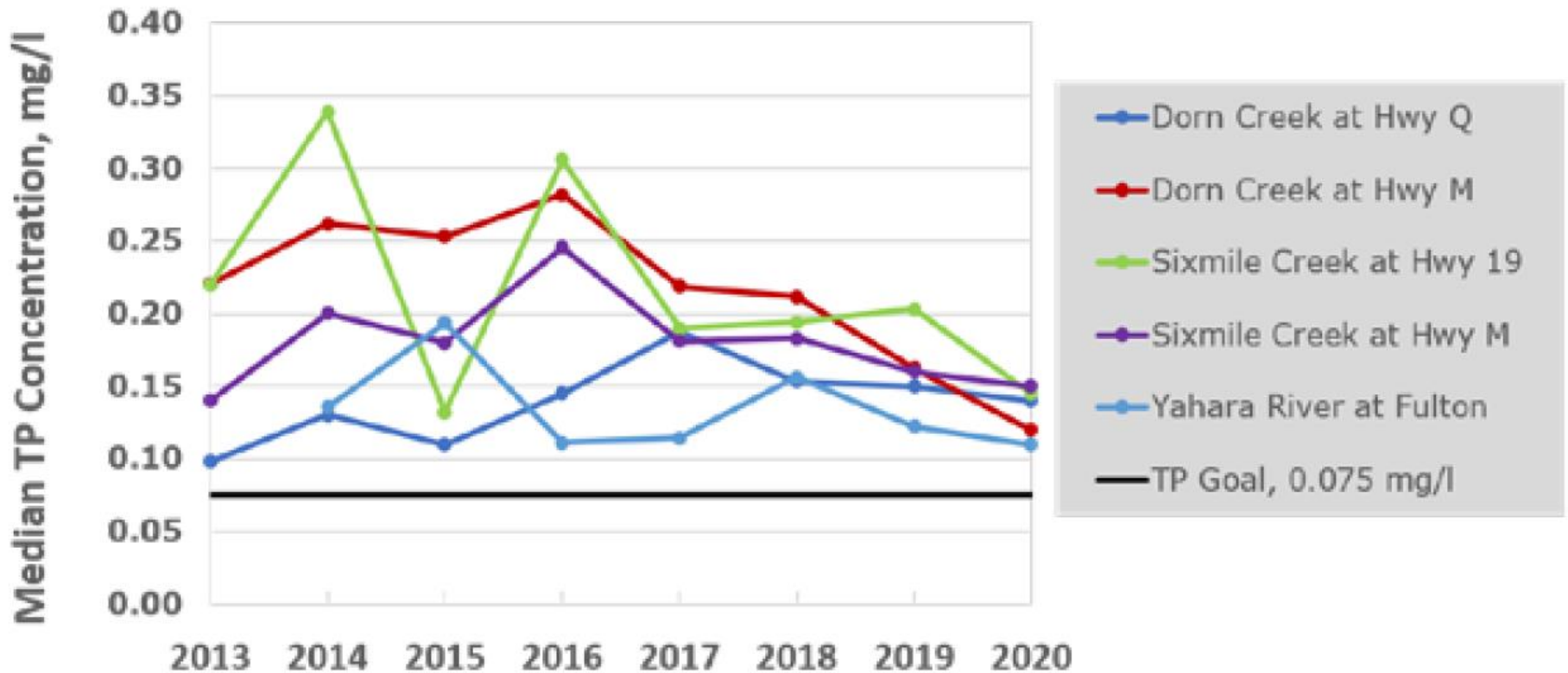
P Reduction Goal and Actual Annual P Reductions by Yahara WINS



# Yahara WINS progress



Median Total Phosphorus (TP) Concentrations During Growing Season (May-Oct.)





# Partner Projects



# Partner Projects



# Partner Projects



- Project goals:
  - nutrient availability
  - Soil health benefits

Mixes: dairy manure, dairy compost, biosolids, biosolids compost





Thank you!

[www.yaharawins.org](http://www.yaharawins.org)

Kim Meyer, Watershed Programs Coordinator  
[kimm@madsewer.org](mailto:kimm@madsewer.org), 608-334-6259

Madison Metropolitan Sewerage District

