

Final Plat - Madison Yards at Hill Farms

City of Madison

Plat consists of 6 lots, 13.6 acres.

Parks - None shown

Parkways - none

Expressways - N/A

Major Highways - adjacent to University Avenue.

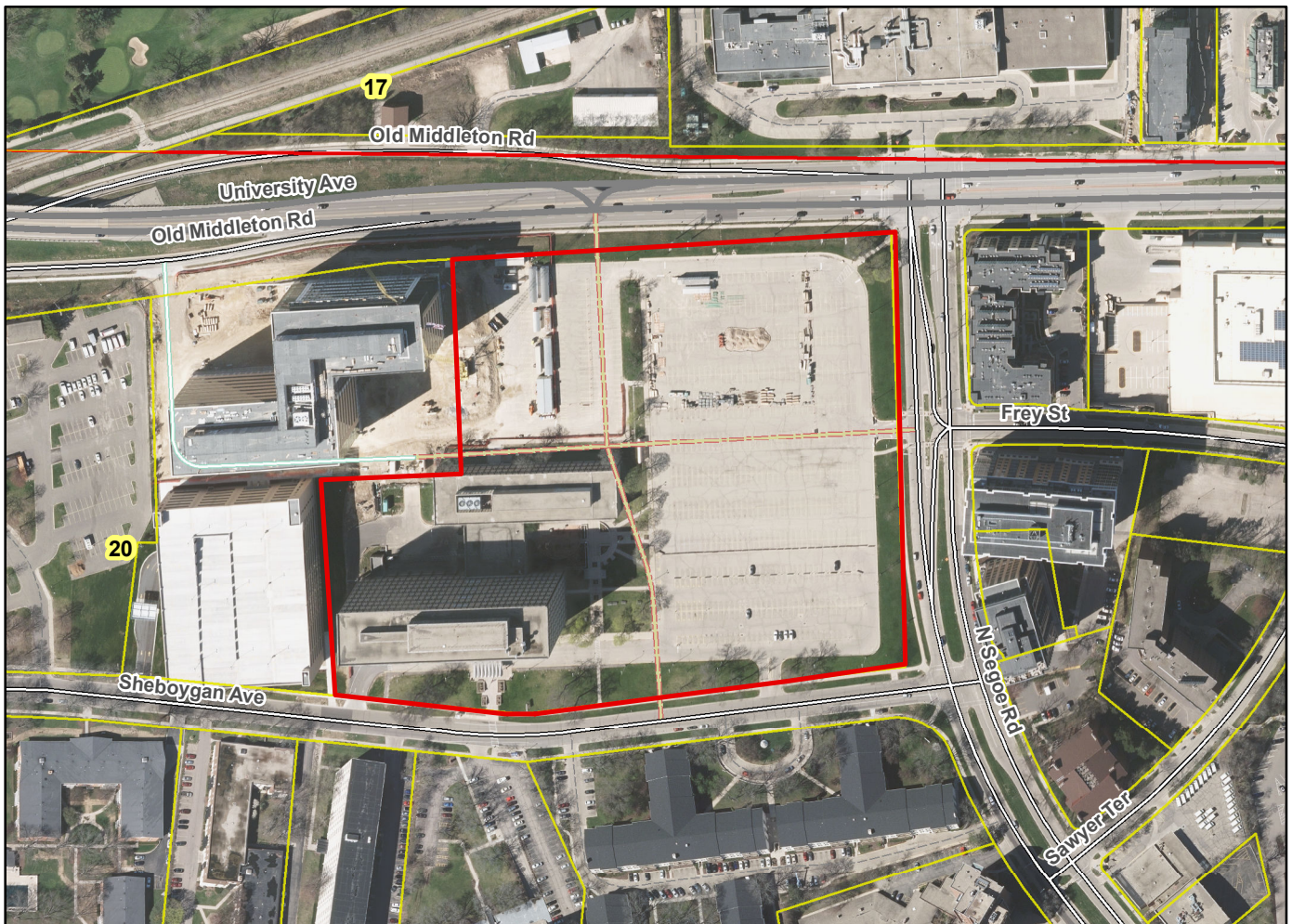
Airports - Dane County Regional

Drainage Channels - None shown.

Schools - established

Other Development - N/A

Plats of subdivisions located in all other incorporated municipalities shall be submitted to the committee, as provided by section 236.12(2)(b) of the Wis. Stats., for the purpose of determining whether the committee has any objection to the plat. The basis for any objection to any such plat shall be that the plat conflicts with parks, parkways, expressways, major highways, airports, drainage channels, schools or other planned public developments.



Motion to certify with no objections: _____, Second: _____, Vote: _____