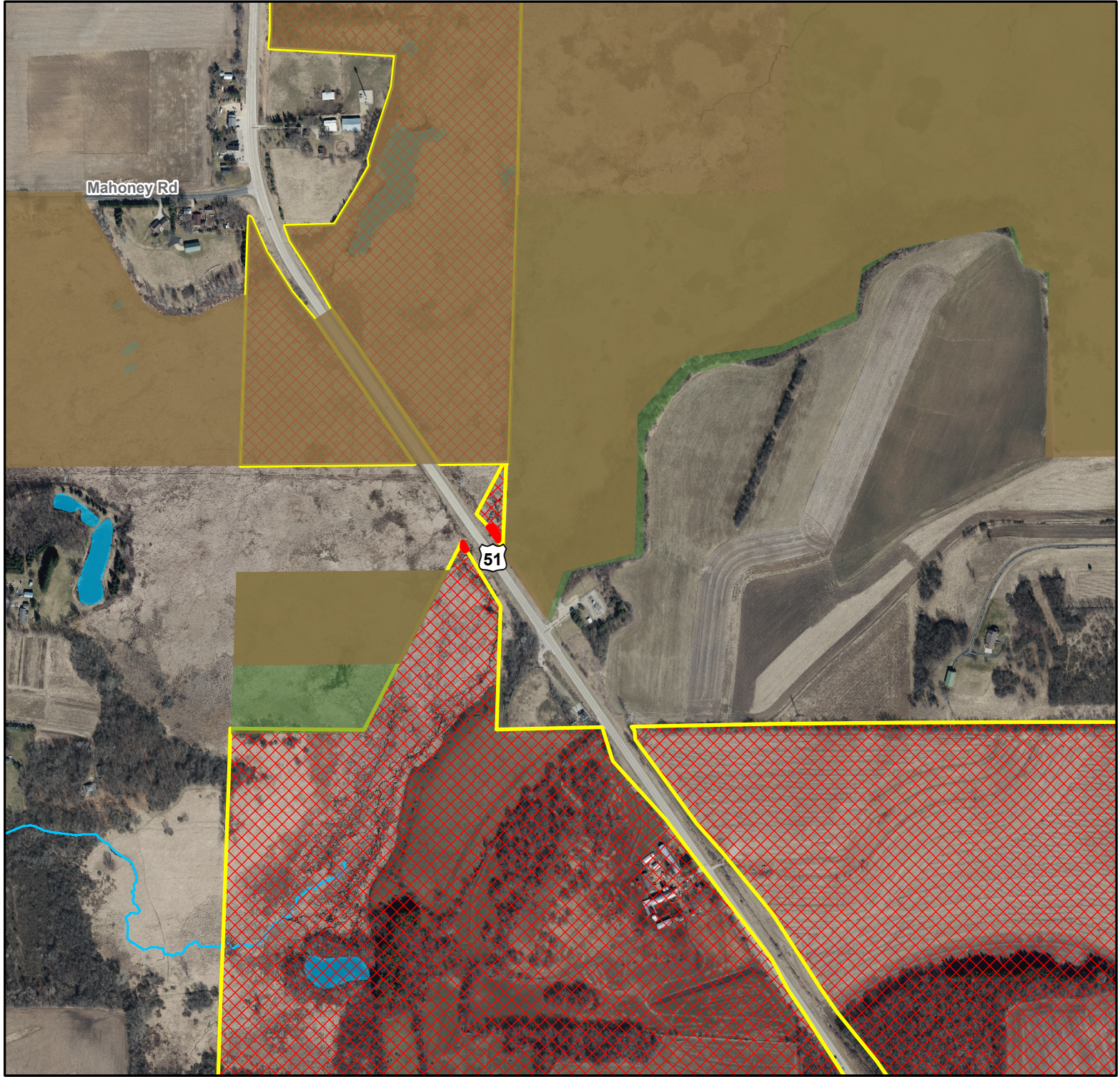




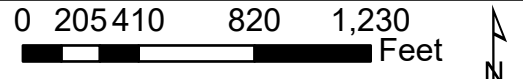


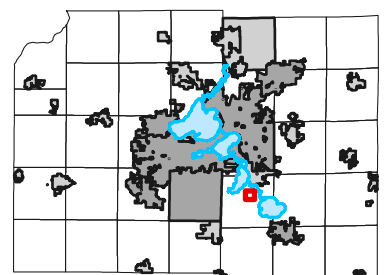
# Wisconsin DOT, Temporary Limited Easement, approx. 2,017 sq ft Kramper Conservation Easement



-  Temporary Limited Easement
-  Conservation Easement
-  WI DNR ownership
-  Town of Dunn ownership



Location in Dane County



Data Sources:  
Digital Orthophoto (Dane County 2024)  
Created by Dane County Land & Water Resources Department, April 9, 2026