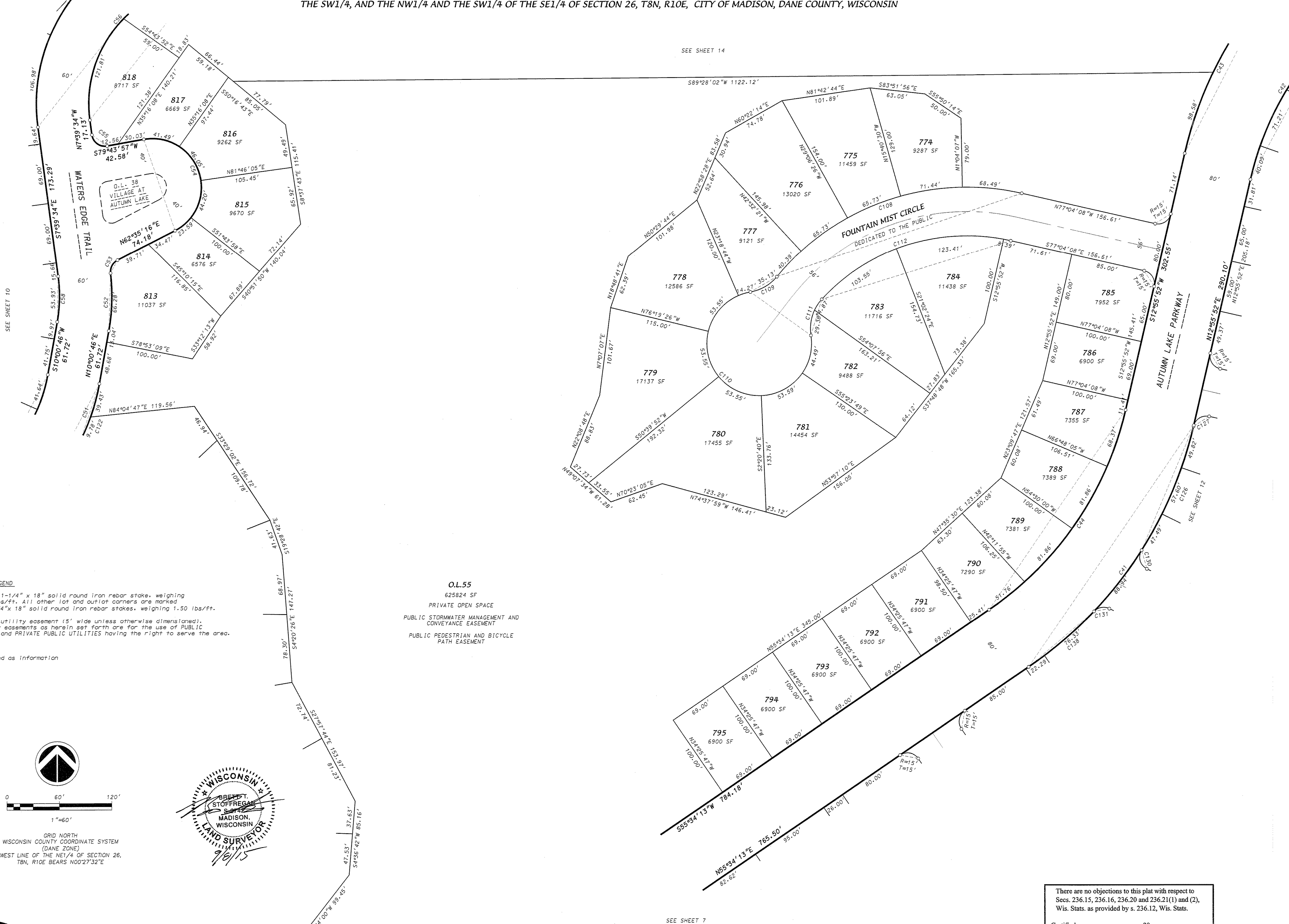


VILLAGE AT AUTUMN LAKE REPLAT

LOTS 1-233, 241-519, OUTLOTS 1-15, OUTLOTS 18-39 AND VARIOUS PUBLIC RIGHT-OF-WAYS DISCONTINUED BY THE CITY OF MADISON RES-15
 DOC. NO. _____ WITHIN VILLAGE AT AUTUMN LAKE, LOCATED IN THE NE1/4, SW1/4, SE1/4 OF THE NW1/4, AND THE NE1/4, NW1/4, SW1/4 AND THE SE1/4 OF THE SW1/4, AND THE NW1/4 AND THE SW1/4 OF THE SE1/4 OF SECTION 26, T8N, R10E, CITY OF MADISON, DANE COUNTY, WISCONSIN



SEE SHEET 14

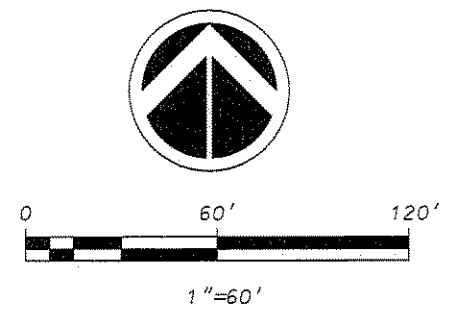
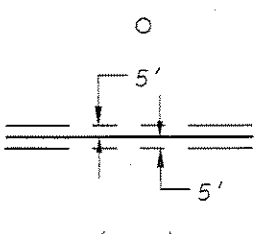
SEE SHEET 7

LEGEND

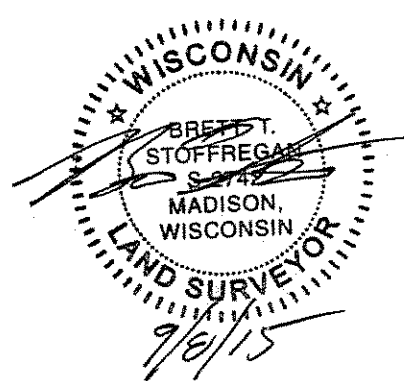
Placed 1-1/4" x 18" solid round iron rebar stake, weighing 4.30 lbs/ft. All other lot and outlot corners are marked with 3/4" x 18" solid round iron rebar stakes, weighing 1.50 lbs/ft.
 Public utility easement (5' wide unless otherwise dimensioned). Utility easements as herein set forth are for the use of PUBLIC BODIES and PRIVATE PUBLIC UTILITIES having the right to serve the area.
 Recorded as information

O.L.55

625824 SF
 PRIVATE OPEN SPACE
 PUBLIC STORMWATER MANAGEMENT AND CONVEYANCE EASEMENT
 PUBLIC PEDESTRIAN AND BICYCLE PATH EASEMENT



GRID NORTH
 WISCONSIN COUNTY COORDINATE SYSTEM
 (DANE ZONE)
 WEST LINE OF THE NE1/4 OF SECTION 26,
 T8N, R10E BEARS N00°27'32"E



There are no objections to this plat with respect to Secs. 236.15, 236.16, 236.20 and 236.21(1) and (2), Wis. Stats. as provided by s. 236.12, Wis. Stats.
 Certified _____, 20____
 Department of Administration

Received: 09/08/2015
 CPA
27413

D'ONOFRIO KOTTKE AND ASSOCIATES, INC.
 7530 Westward Way, Madison, WI 53717
 Phone: 608.833.7530 • Fax: 608.833.1089
 YOUR NATURAL RESOURCE FOR LAND DEVELOPMENT

FN:14-07-117