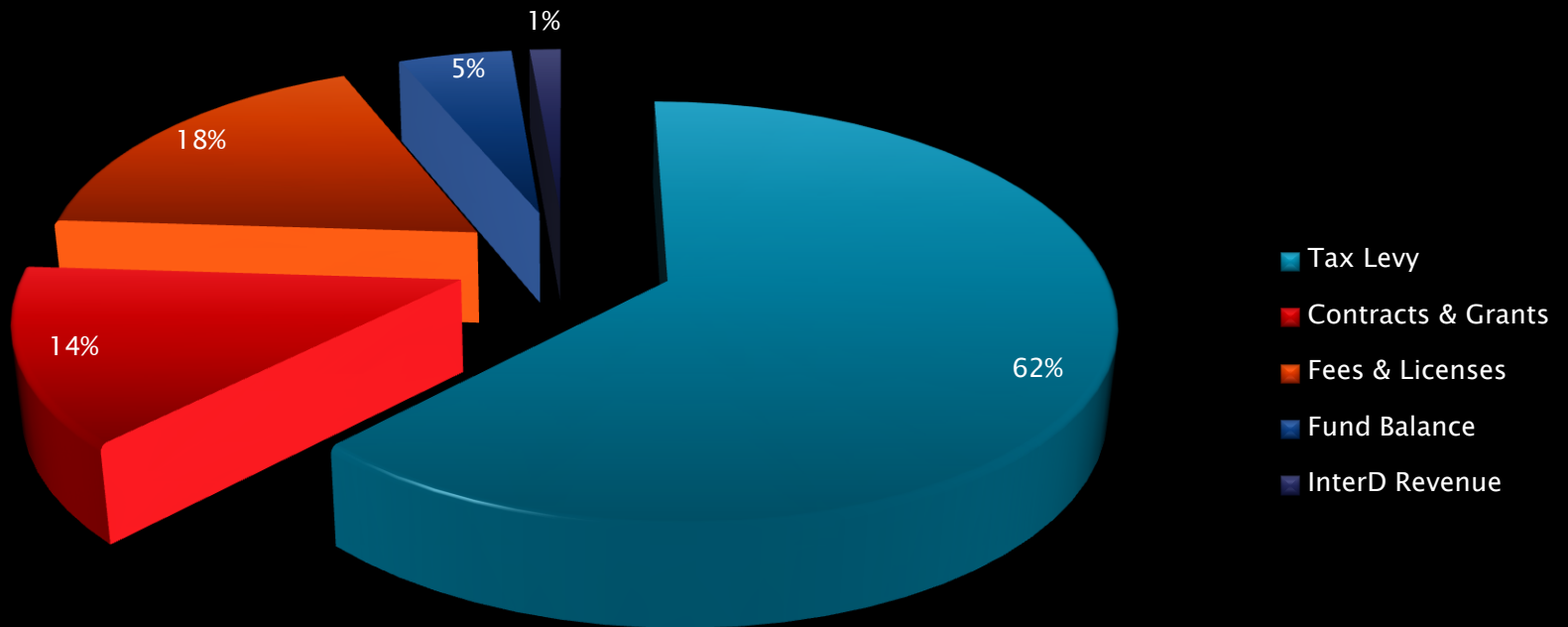


# Public Health Madison & Dane County

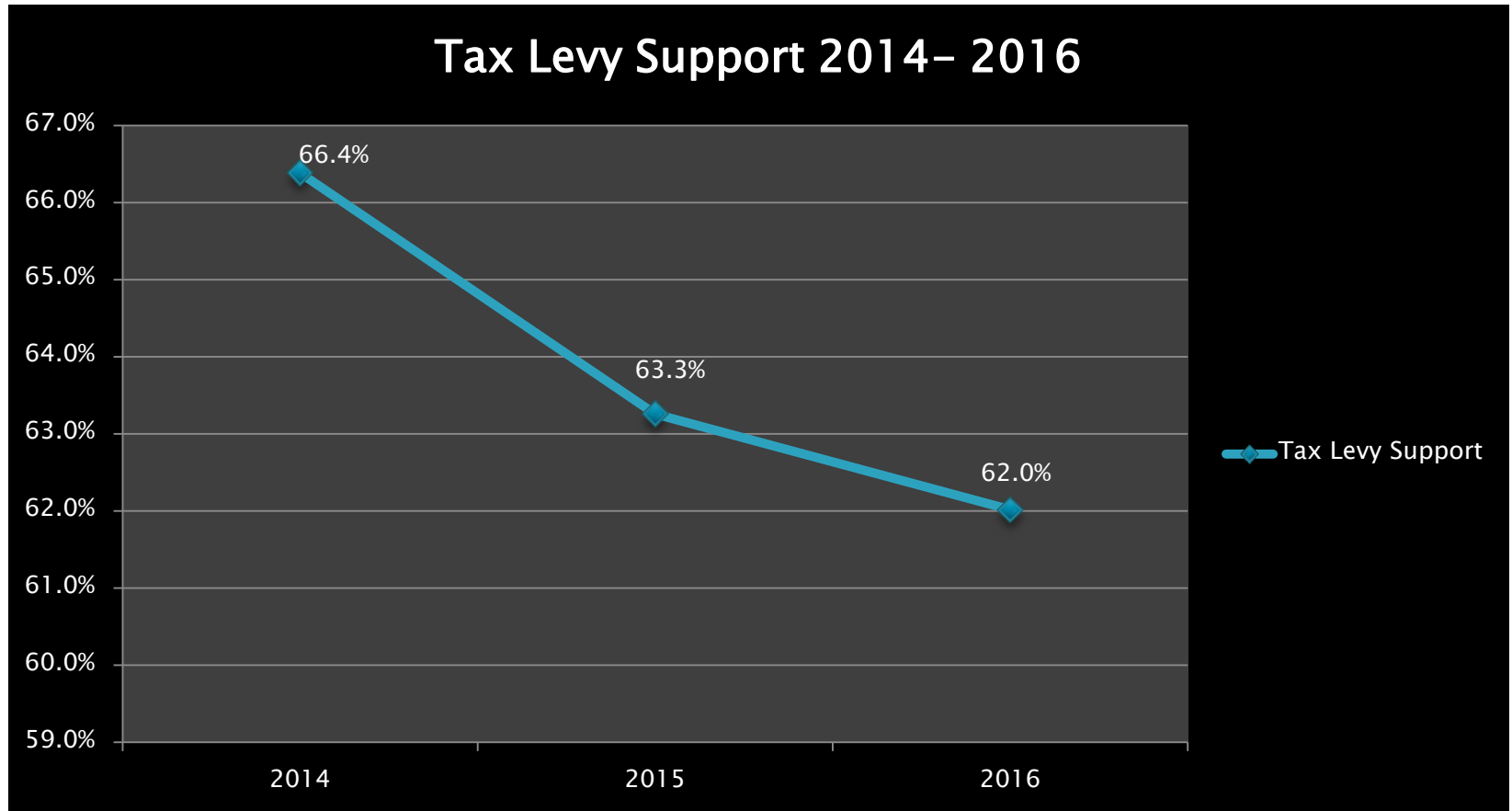
2016 Financial Summary  
February 9<sup>th</sup> 2017

# Revenue Source

## 2016 Revenue Breakdown

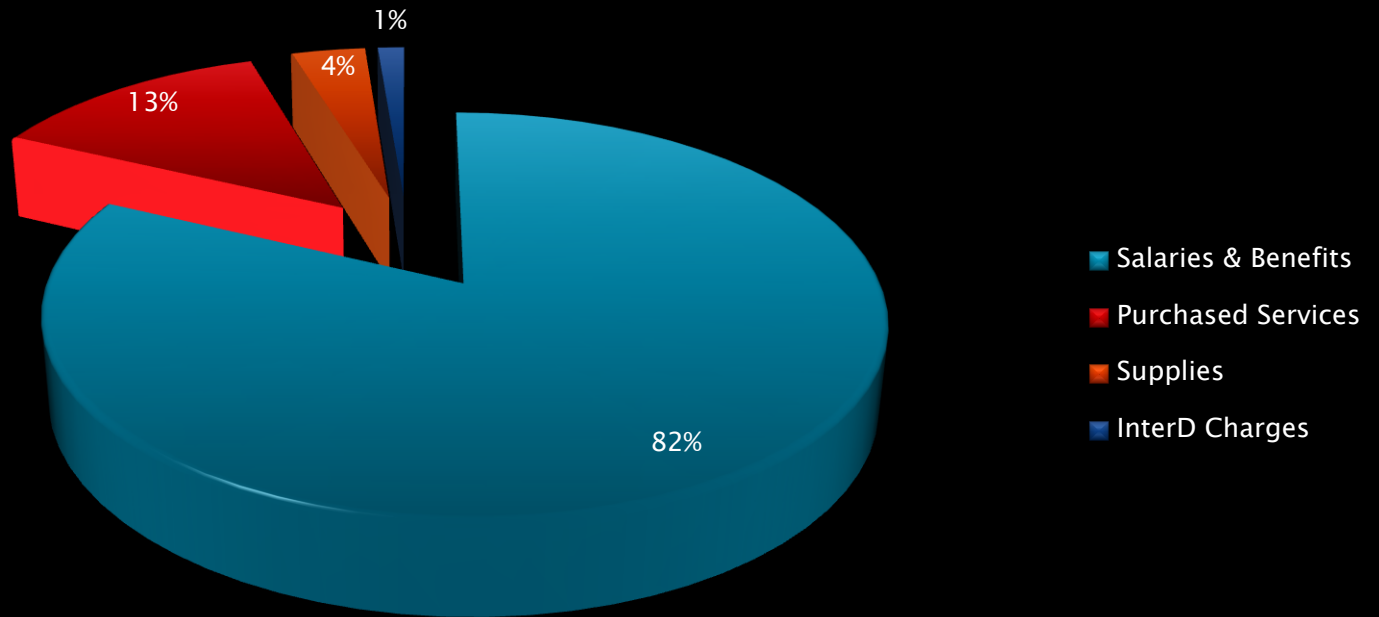


# Tax Levy Support 2014-2016



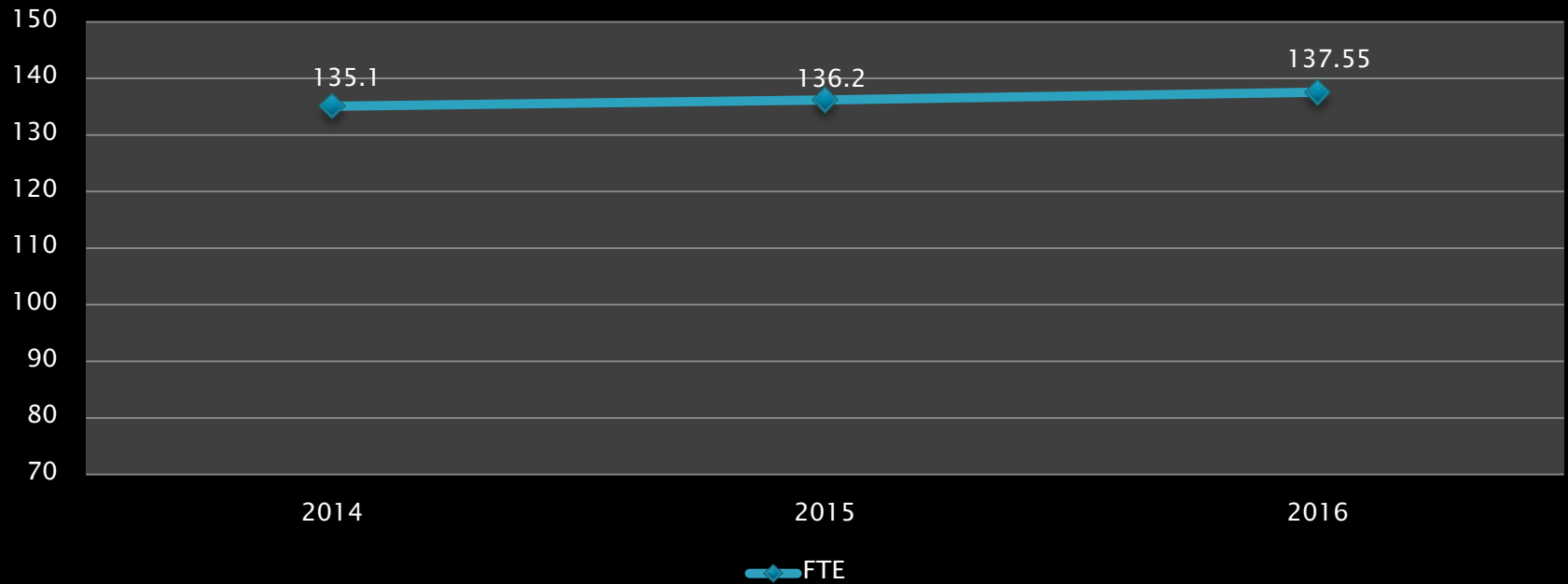
# Expense Type

2016 Expense Breakdown









# Funded FTEs

Public Health--Madison and Dane County  
Full-time Equivalents (FTE) 2014-2016



# Budget and Prior Year Comparison

Expense Type	2015	2016 Actual (Unaudited)	2016 Budget (Revised)	2016 Variance with Budget
Total Revenue	16,424,426	16,801,921	16,986,921	185,000 
Total Expenses	15,896,756	15,887,235	16,986,921	1,099,686 
Salaries & Benefits	12,909,352	13,012,719	13,866,989	854,270 
Purchased Services	2,336,475	2,129,300	2,104,893	(24,407) 
Supplies	450,563	552,370	616,857	64,487 
InterD Charges	200,366	192,846	398,182	205,336 
Net Revenue	478,336	949,000 (Estimate)	0	N/A
Fund Balance	3,202,249	3,290,249 (Estimate)	N/A	N/A

# Questions

