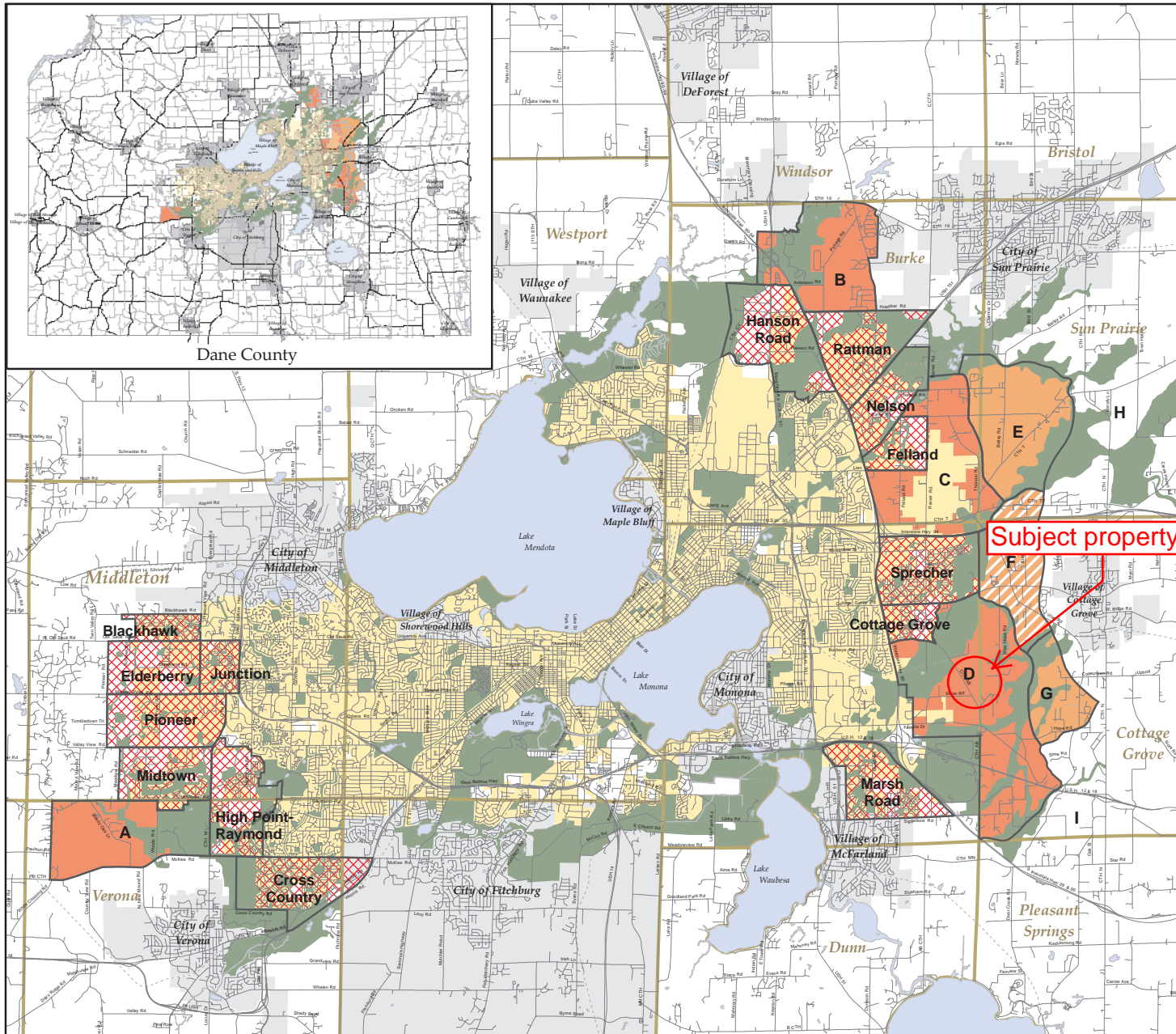







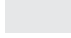



# 2006 Peripheral Planning Areas

Madison Area  
January 2006



-  2006 Peripheral Neighborhood Development Plan Areas
- Peripheral Planning Areas**  
*(See Plan text for group descriptions.)*
-  Group 1 (Areas A, B, C, D)
-  Group 2 (Areas E, F, G)
-  Portions of this area should be considered for permanent open space and agricultural land preservation as part of a community separation area.
-  Group 3 (Areas H, I)
-  Park and Open Space  
*(2006 Generalized Future Land Use Plan)*
-  City of Madison
-  Other Cities and Villages
-  Township Lines

Data Source:  
City of Madison Department of Planning and Development, Planning Unit

