

Final Plat - The Meadows at Conservancy Place

Village of DeForest

Plat consists of 46 lots, 3 Outlots, 12.8 acres.

Parks - None shown. OL 2 - private open space to be owned by HOA

Parkways - none

Expressways - N/A

Major Highways - I 94 to the west and HWY 51 to the east.

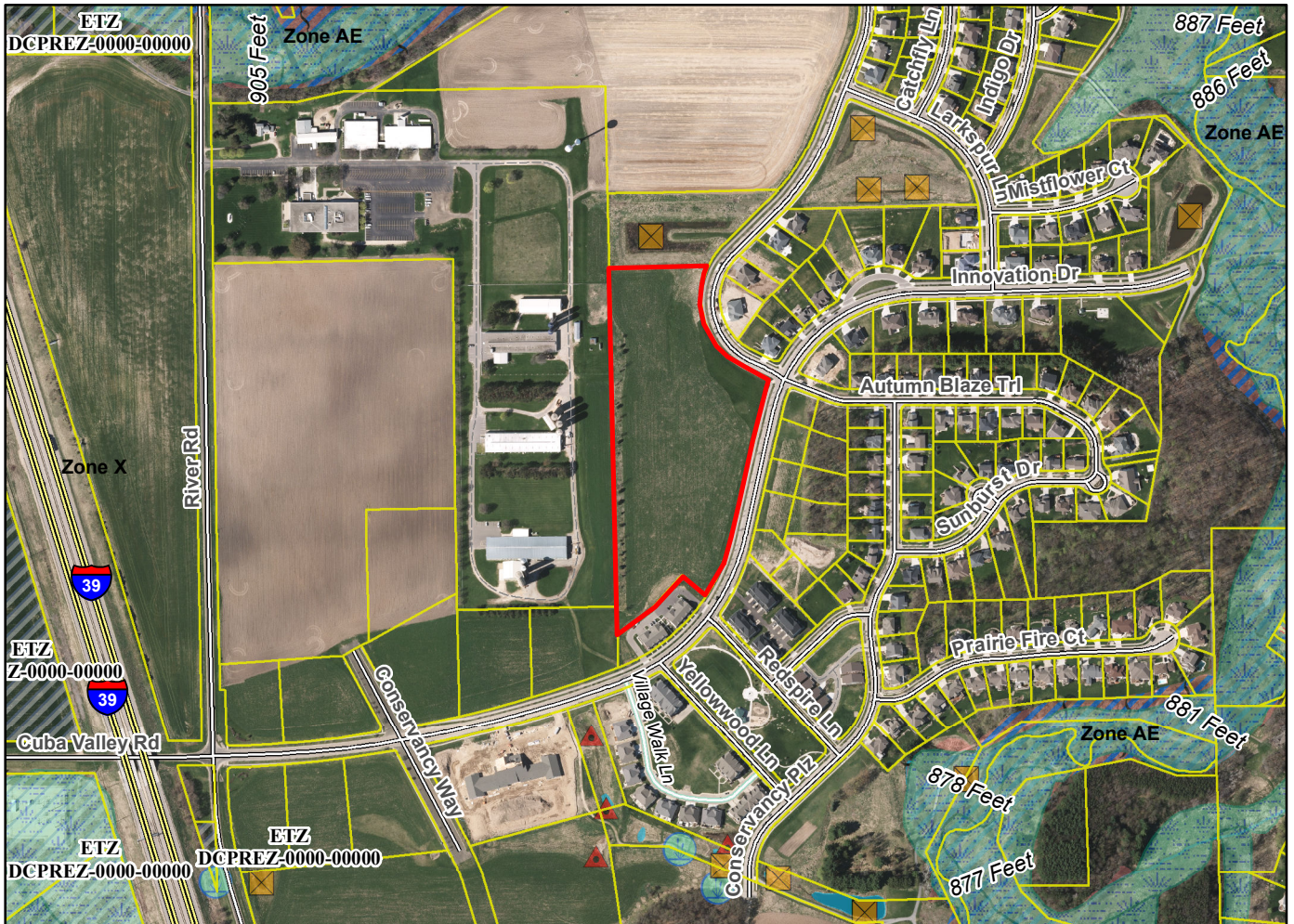
Airports - Dane County Regional

Drainage Channels - drainage arrows shown indicating the direction of drainage flows.

Schools - established

Other Development - OL 1 and 3 dedicated to the public for stormwater management.

Plats of subdivisions located in all other incorporated municipalities shall be submitted to the committee, as provided by section 236.12(2)(b) of the Wis. Stats., for the purpose of determining whether the committee has any objection to the plat. The basis for any objection to any such plat shall be that the plat conflicts with parks, parkways, expressways, major highways, airports, drainage channels, schools or other planned public developments.



Motion to certify with no objections: _____, Second: _____ Vote: _____