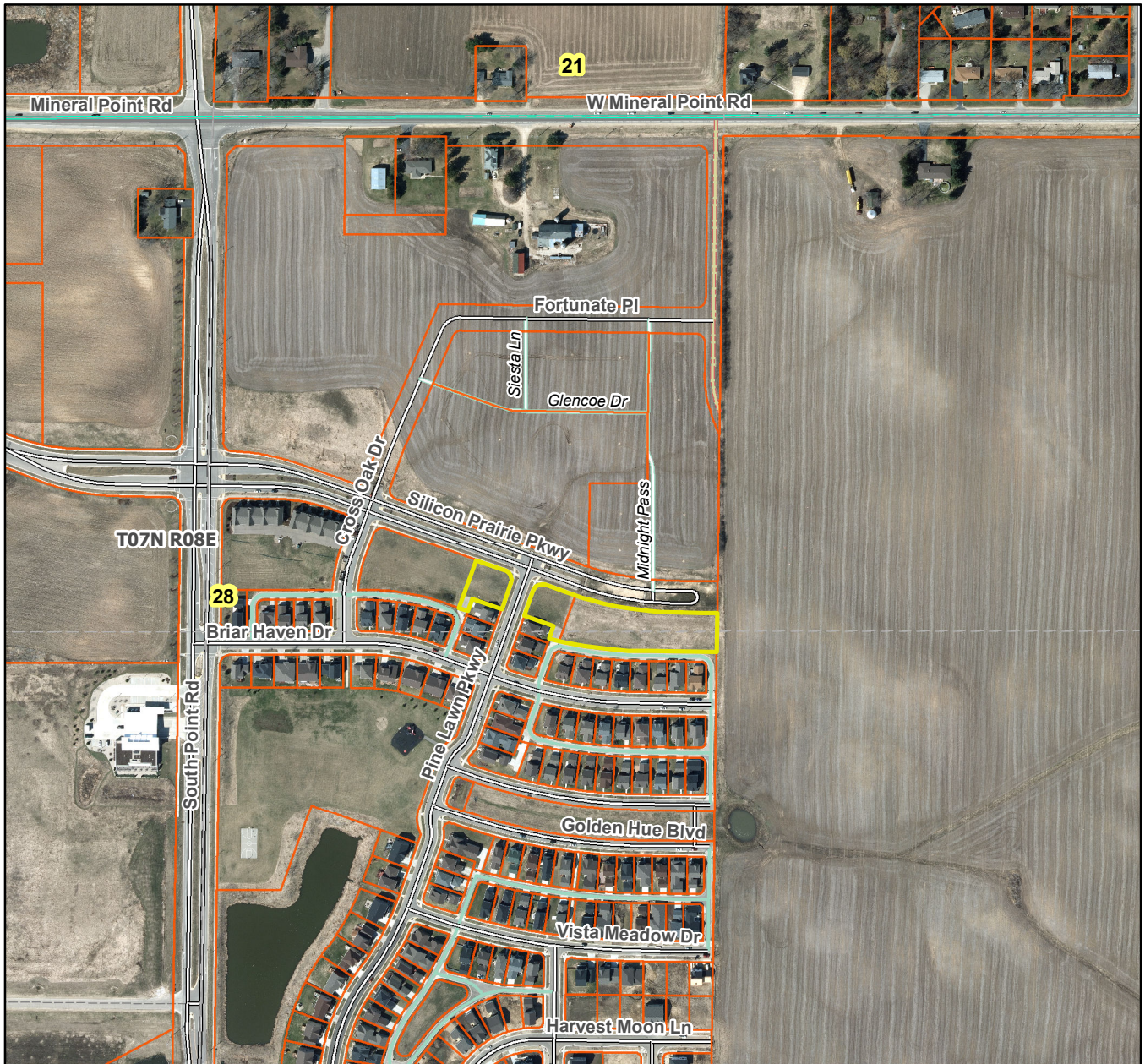


Cardinal Glenn Replat No. 1

City of Madison



Plat consists of 16 lots, 1.4 acres. (Replat)

Parks – None.

Parkways – Pine Lane Parkway (adjacent)

Expressways – N/A

Major Highways – Mineral Point Rd. to the north.

Airports – Dane County Regional Airport (18 mi)

Drainage Channels – All lots are subject to public easements for drainage purposes.

Schools – Established.