

DOA Plat - SECOND ADDITION TO SMITH'S CROSSING MCCOY ADDITION

City of Sun Prairie

Parks - OL 94 dedicated for trail purposes.

Parkways - none

Expressways - N/A

Major Highways - USH 151 to the north.

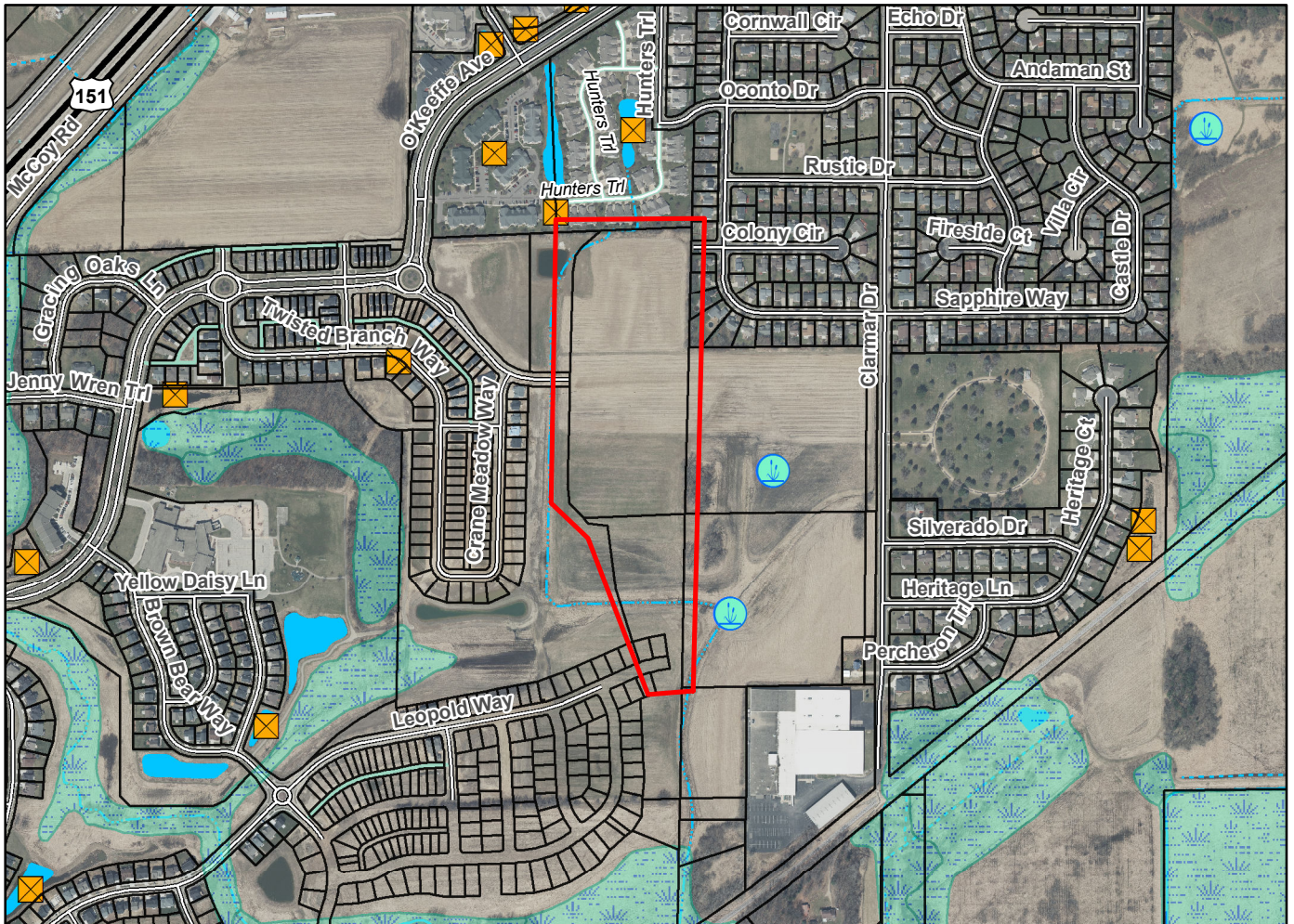
Airports - No conflicts.

Drainage Channels - Directional drainage arrows shown throughout the plat.

Schools - established

Other Development - OL 94 shown as dedicated for stormwater management, wetlands.

Plats of subdivisions located in all other incorporated municipalities shall be submitted to the committee, as provided by section 236.12(2)(b) of the Wis. Stats., for the purpose of determining whether the committee has any objection to the plat. The basis for any objection to any such plat shall be that the plat conflicts with parks, parkways, expressways, major highways, airports, drainage channels, schools or other planned public developments.



Motion to certify with no objections: _____, Second: _____, Vote: _____