

# Noise Abatement Subcommittee Review of Noise Complaint Activity

October 28, 2015

Madison, Wisconsin



# AIRCRAFT MOVEMENTS

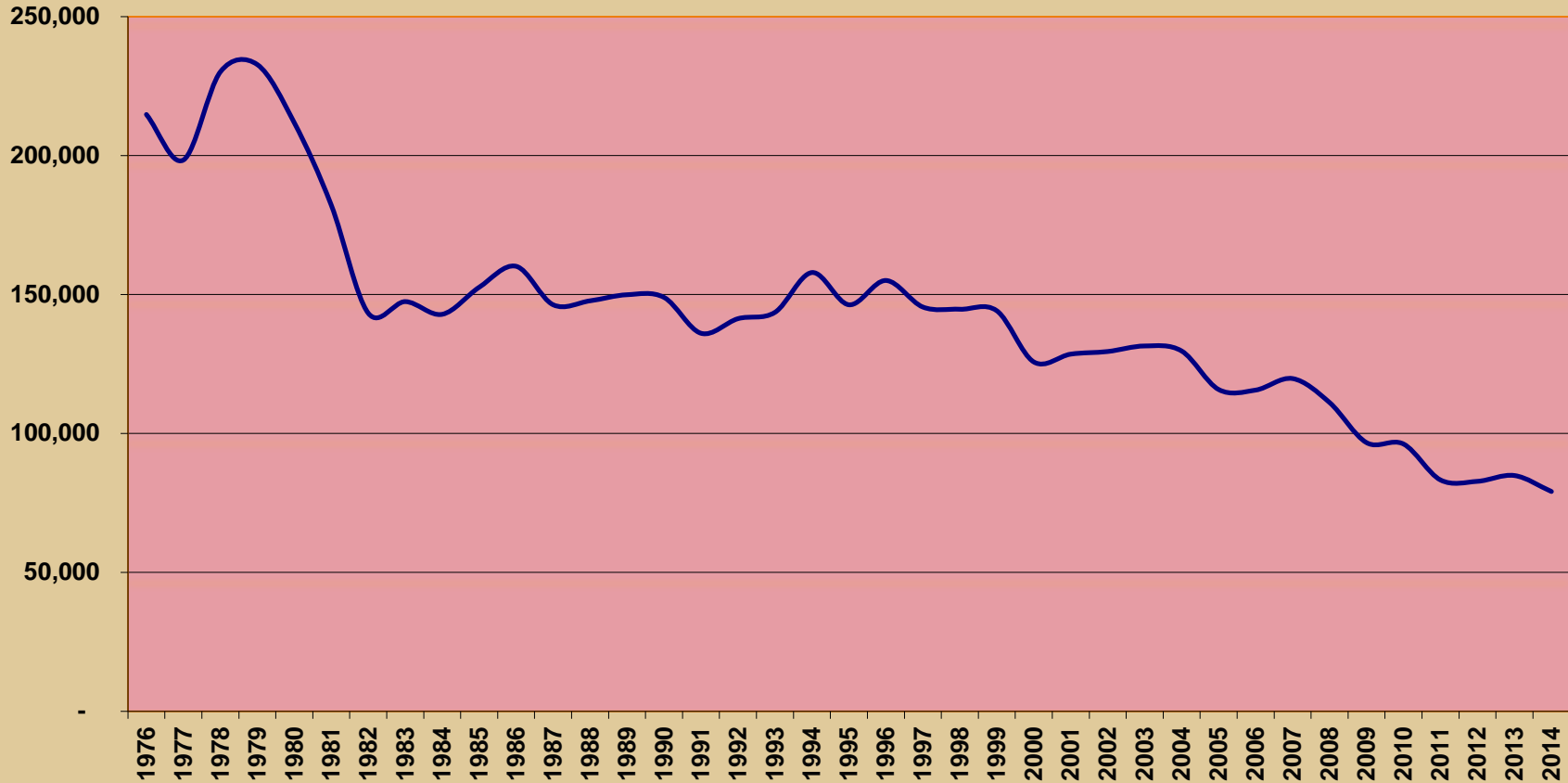
APR 15 – SEP 15

2

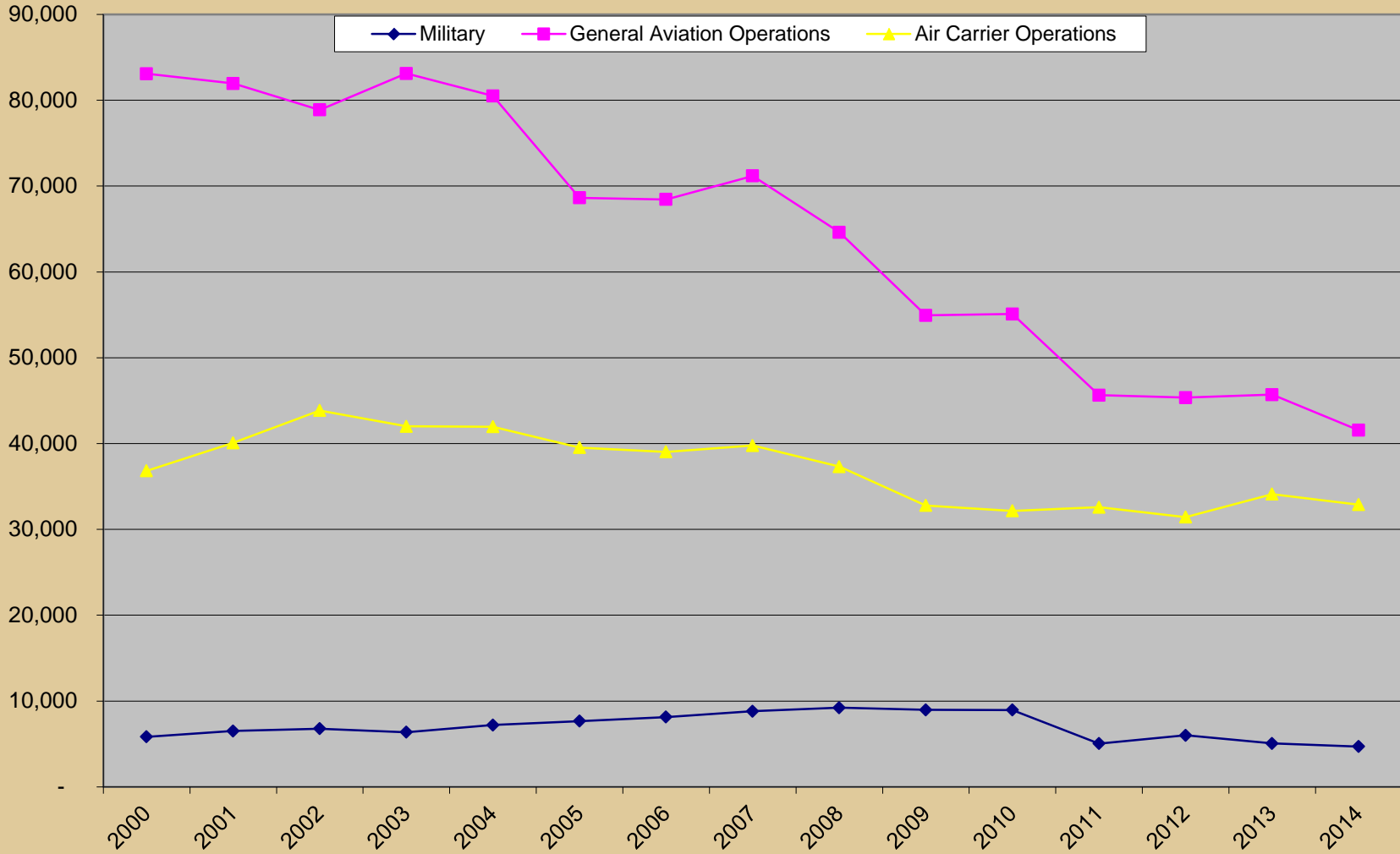
<b>Aircraft Movements</b>	<b>APR 15 – SEP 15</b>	<b>APR 14 – SEP14</b>	<b>% Change</b>
<i><b>Air Carrier</b></i>	<b>14,960</b>	<b>16,573</b>	<b>-9.7%</b>
<i><b>Military</b></i>	<b>2,355</b>	<b>2,325</b>	<b>+1.0%</b>
<i><b>General Aviation</b></i>	<b>23,940</b>	<b>23,614</b>	<b>+1.0%</b>
<i><b>Total Movements</b></i>	<b>41,255</b>	<b>42,512</b>	<b>-3.0%</b>



# DCRA HISTORICAL AIRCRAFT OPERATIONS

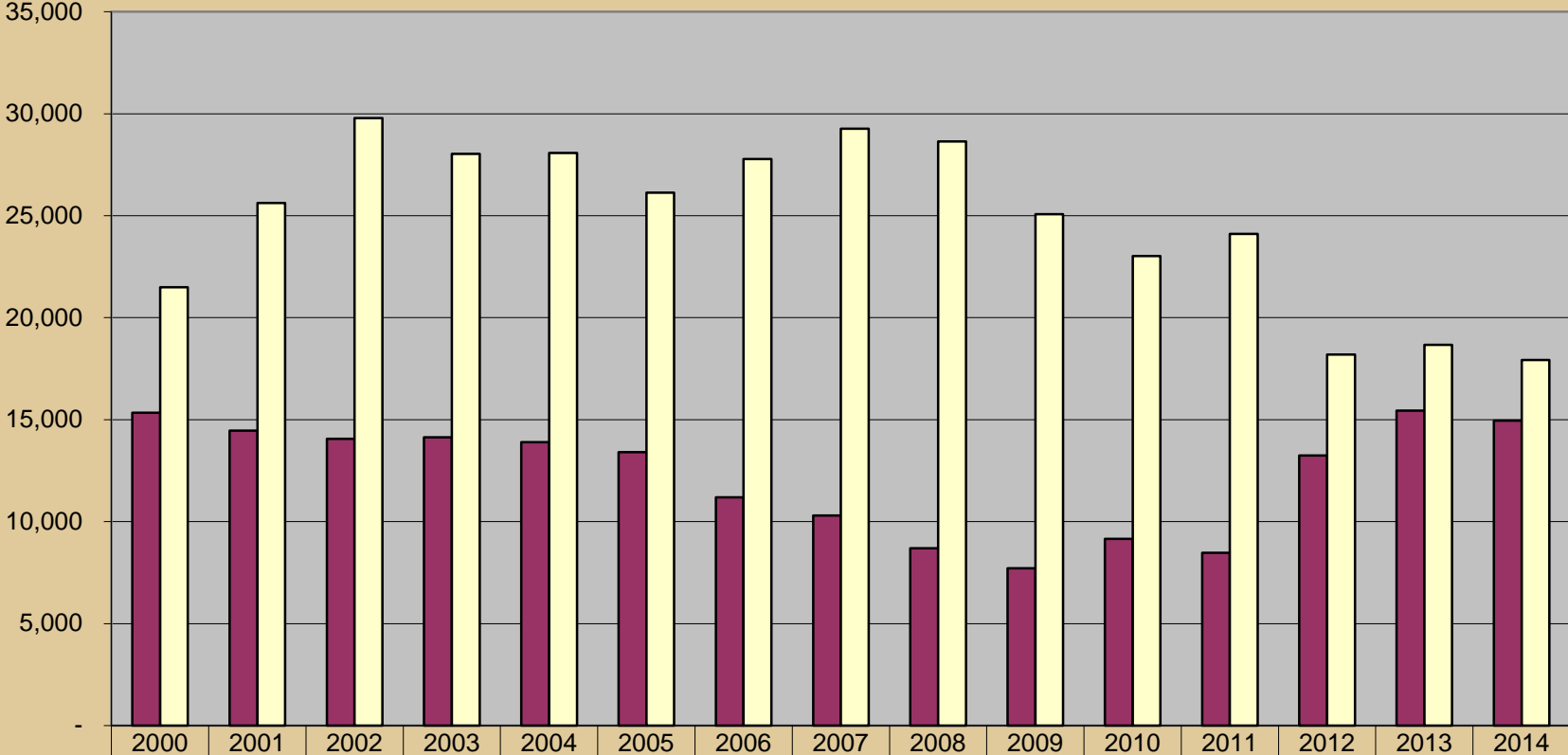


# DCRA HISTORICAL OPERATIONS BY AIRCRAFT TYPE



# AIR CARRIER (60+) vs AIR TAXI (59)

■ Air Carrier □ Air Taxi

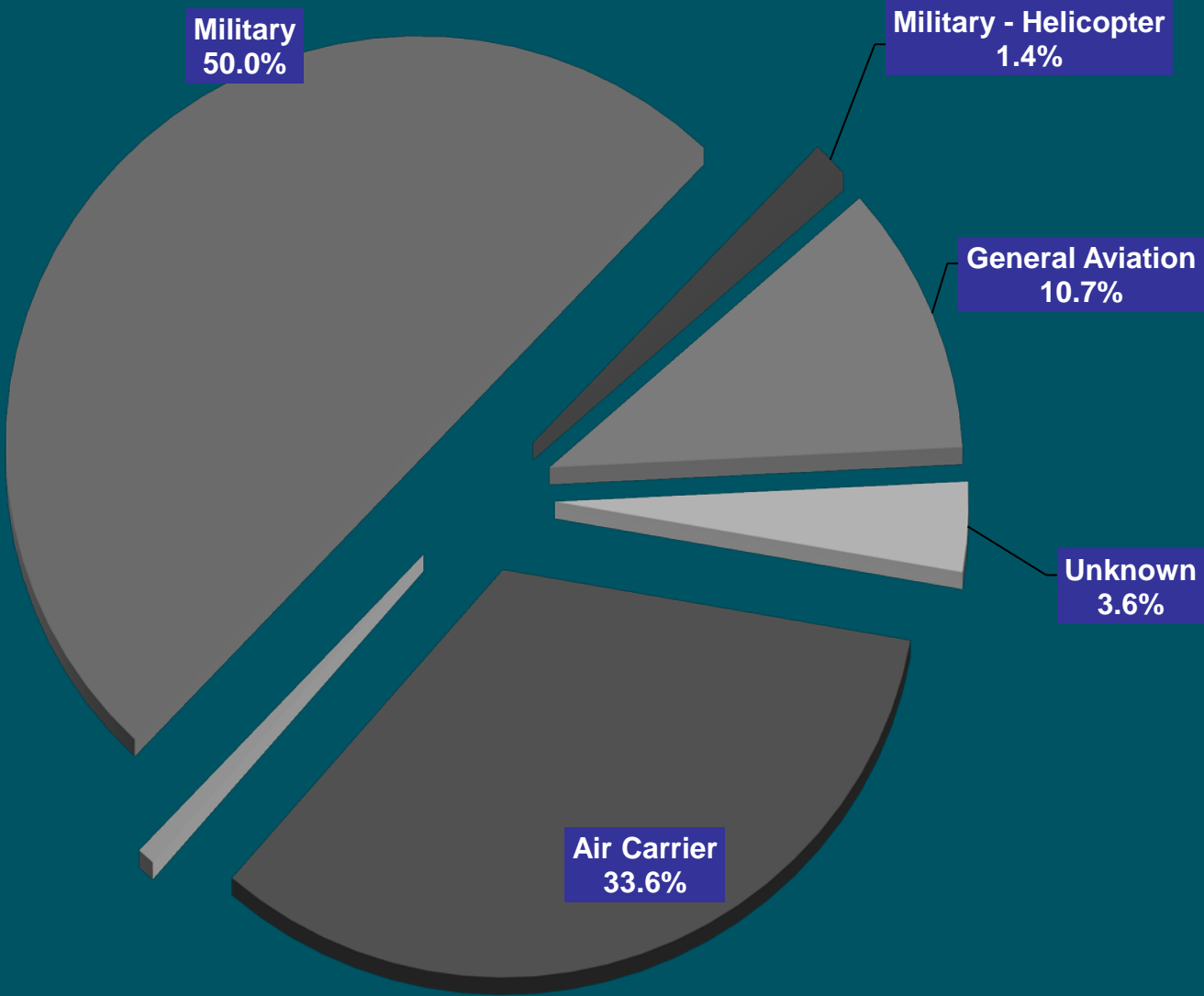


■ Air Carrier	15,332	14,458	14,066	14,130	13,895	13,401	11,190	10,303	8,690	7,710	9,150	8,476	13,239	15,439	14,948
□ Air Taxi	21,497	25,628	29,784	28,032	28,072	26,127	27,784	29,274	28,637	25,080	23,022	24,111	18,193	18,667	17,929



# COMPLAINTS BY AIRCRAFT TYPE

APR 15- SEP 15



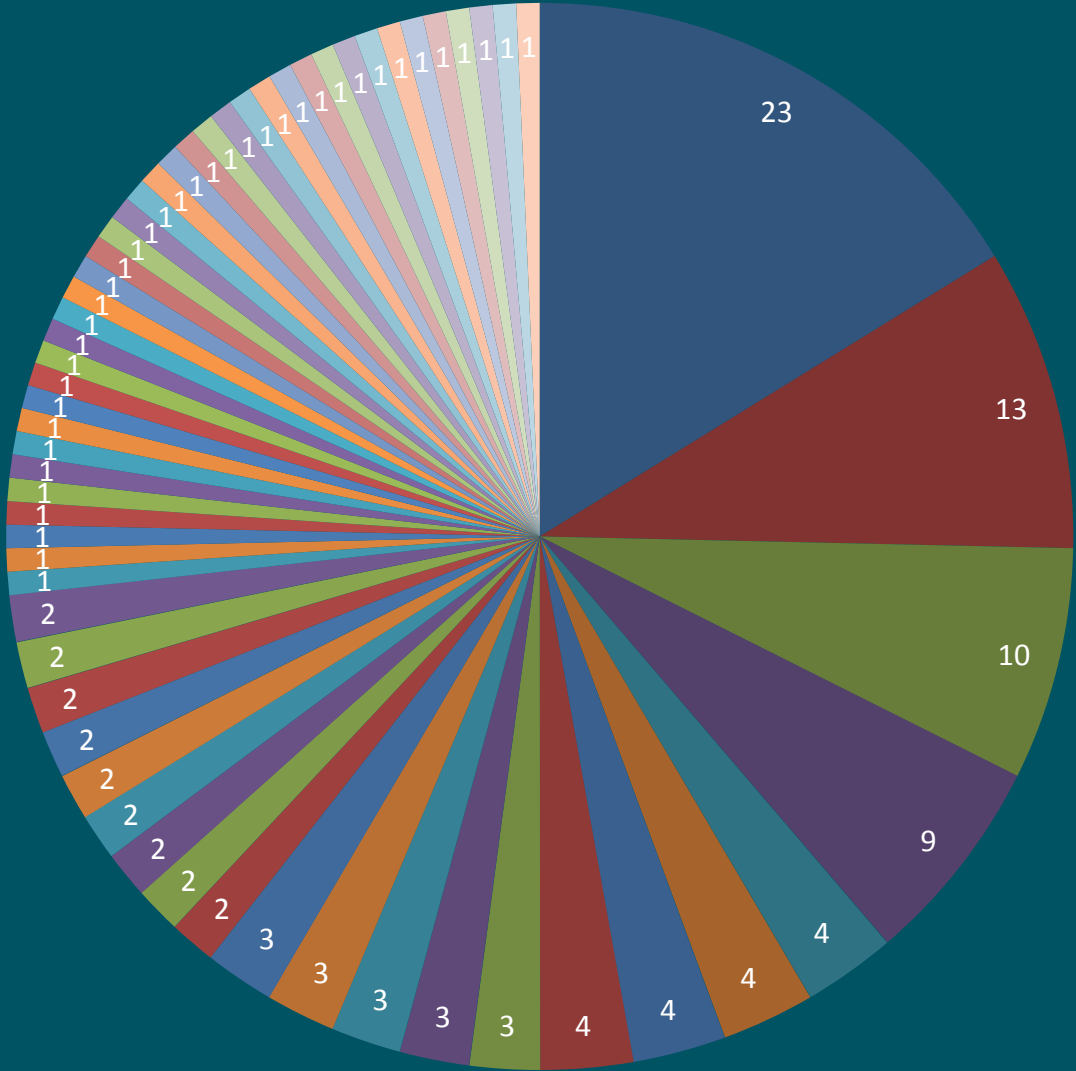
# COMPLAINTS BY AREA

Area	APR 15 – SEP 15		APR 14 - SEP 14	
	Complaints	Callers	Complaints	Callers
<i>Blooming Grove</i>	0	0	0	0
<i>Burke</i>	0	0	0	0
<i>Cottage Grove</i>	0	0	0	0
<i>DeForest</i>	23	1	74	1
<i>Fitchburg</i>	0	0	0	0
<i>Madison</i>	107	57	45	28
<i>McFarland</i>	0	0	0	0
<i>Middleton</i>	0	0	0	0
<i>Monona</i>	1	1	0	0
<i>Stoughton</i>	0	0	0	0
<i>Windsor</i>	0	0	0	0
<i>Verona</i>	0	0	0	0
<i>Waunakee</i>	1	1	4	1
<b>Total</b>	<b>132</b>	<b>60</b>	<b>123</b>	<b>30</b>



# Calls per Household

APR 15-SEP 15

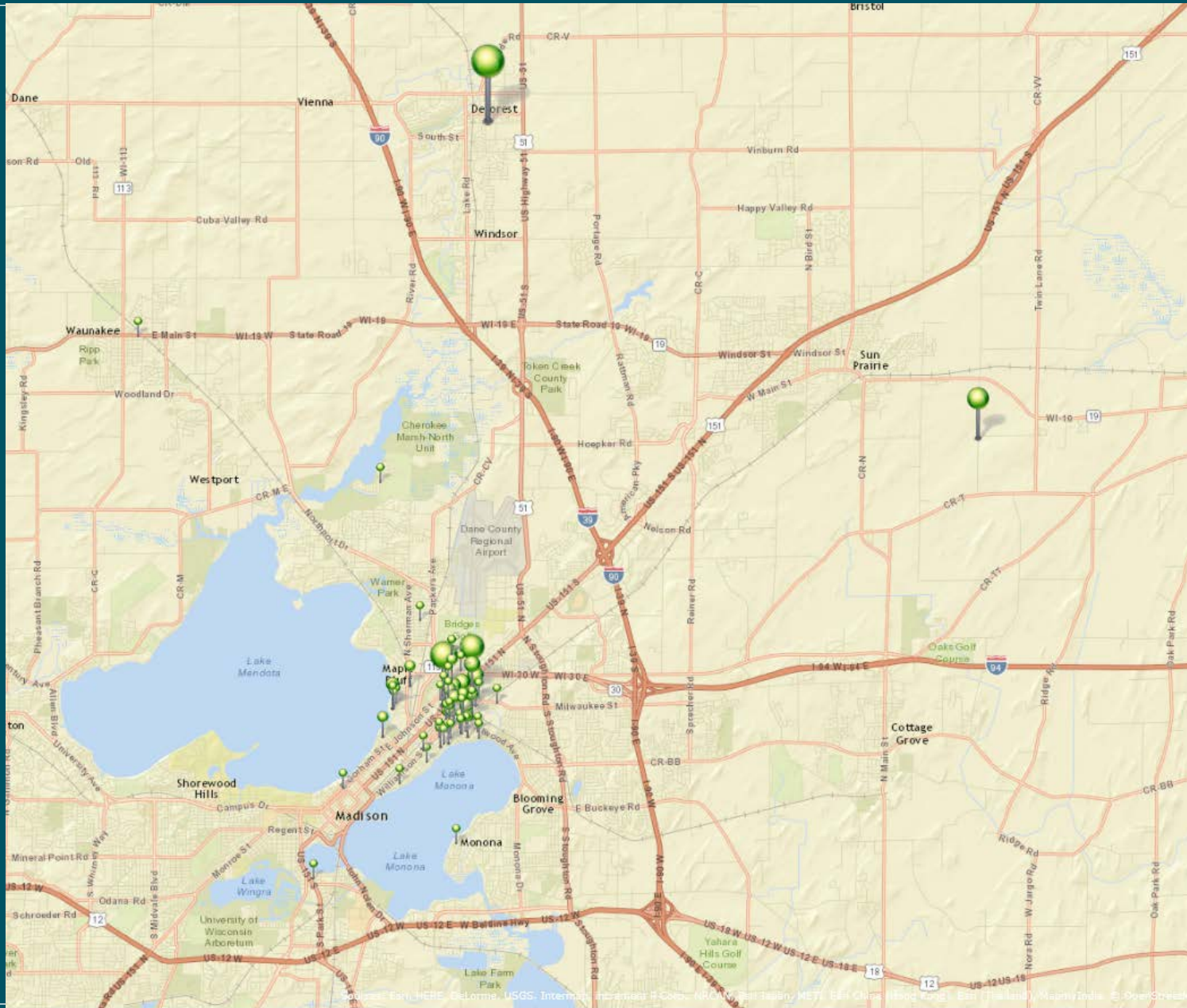




# COMPLAINT LOCATIONS

APR 15 – SEP 15

10



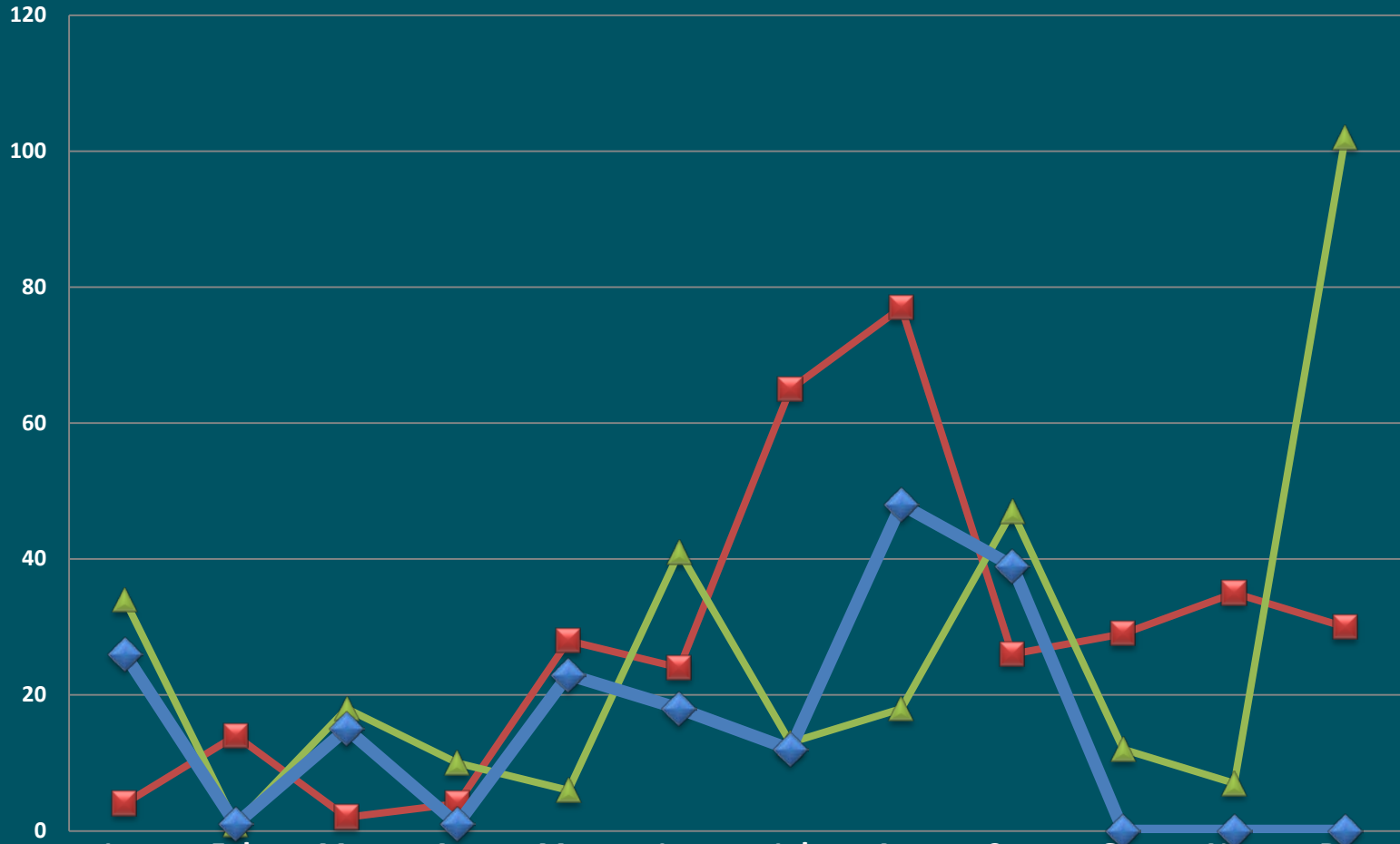
# NOISE COMPLAINT CALLS

APR 15 – SEP 15

	APR	MAY	JUN	JUL	AUG	SEP	TOTAL
DAY	1	21	14	12	45	34	127
NIGHT	0	2	4	0	3	5	14
TOTAL	1	23	18	12	48	39	141



# 2013 - 2015 Noise Complaint History



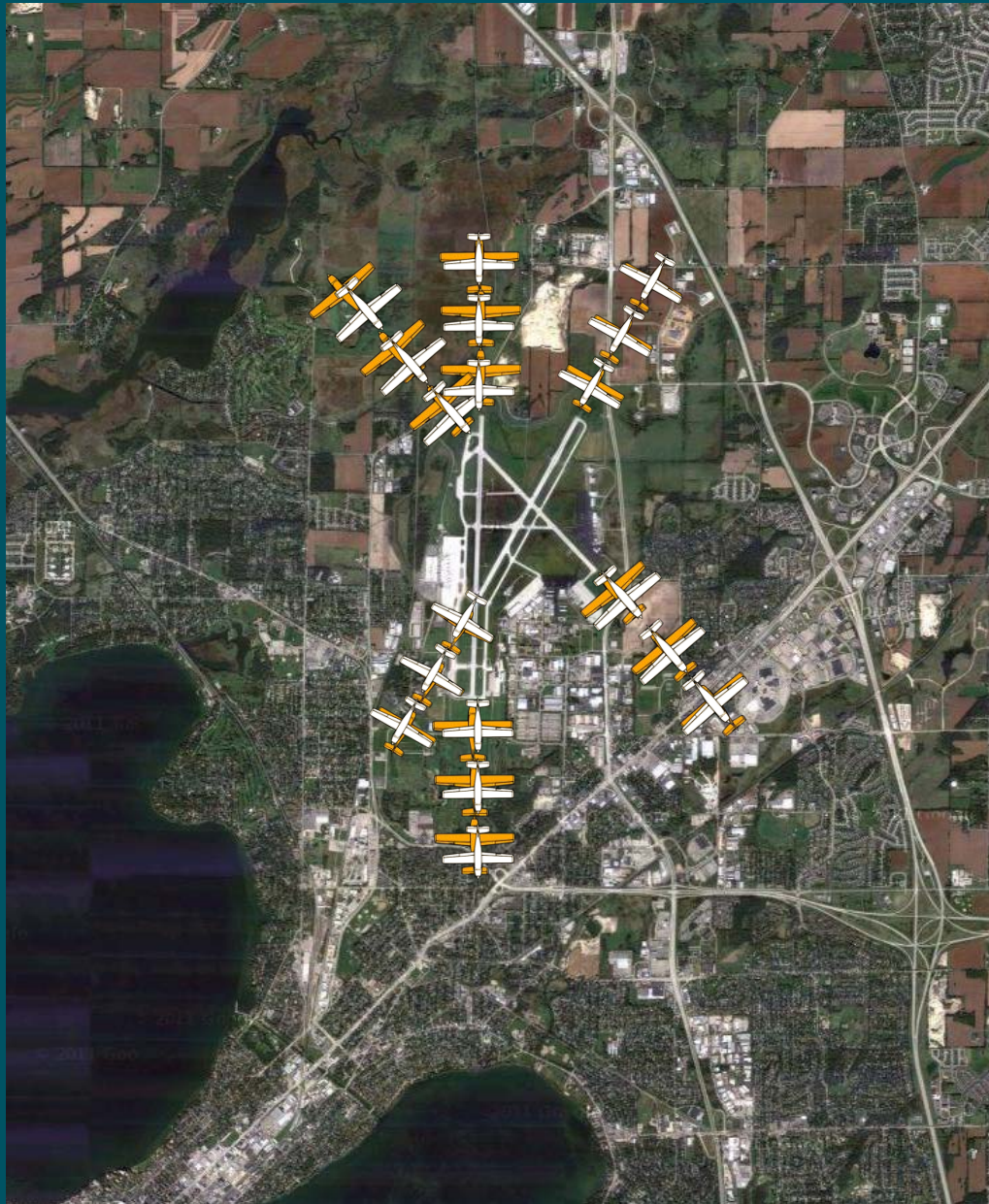
	Jan	Feb	Mar	Apr	May	Jun	Jul	Aug	Sep	Oct	Nov	Dec
2013	4	14	2	4	28	24	65	77	26	29	35	30
2014	34	1	18	10	6	41	13	18	47	12	7	102
2015	26	1	15	1	23	18	12	48	39	0	0	0







# WIND CONDITIONS SUMMARY



- WINDS FROM THE SOUTH  
THAT ARE GREATER THAN 10 KNOTS
- VISIBILITY GREATER THAN 3 MILES
- RUNWAY CONDITION IS DRY
- PILOT COMPLIES WITH VOLUNTARY CONTRA FLOW OPERATION

# Wisconsin Wind Data\*

\*National Weather Service

15

Month	Prevailing Wind	Greater than 5 kts
Jan	WNW – 11.5	94.0%
Feb	WNW – 12	93.4%
Mar	NW – 13	93.9%
Apr	S – 11.4	93.6%
May	S – 10.4	93.0%
Jun	S – 9.7	91.6%
Jul	S – 9.2	90.1%
Aug	S – 9.1	88.9%
Sep	S – 9.8	90.1%
Oct	S – 10.4	92.2%
Nov	S – 10.7	94.3%
Dec	WNW – 12.4	94.0%
Annual	S – 12.4	92.4%



# NOISE ABATEMENT COMPLIANCE AUDIT

WEATHER / RUNWAY DATA	
WINDS AT 5 KNOTS OR HIGHER <sup>1</sup>	80.29%
VISIBILITY AT 5 STATUTE MILES OR LESS	4.71%
RUNWAYS CLOSED <sup>2</sup>	18/36 = 1398:07 3/21 = 60:54 14/32 = 88:57
<sup>1</sup> – Based on METAR weather observations at the time of recorded aircraft operations. <sup>2</sup> – Runway closures primarily due to snow and ice control procedures	



# NOISE ABATEMENT COMPLIANCE AUDIT

## RUNWAY USE

Aircraft observed departing to the North	41.88%
Aircraft observed arriving from the North	54.45%
Aircraft observed departing to the South	58.12%
Aircraft observed arriving from the South	45.55%

## PASSUR FLIGHT TRACKING

**16,802** operations recorded by Passur flight monitoring system

**2,117** Passur observations of departures to the north and arrivals from the north when conditions allow for implementation of Noise Abatement Procedures





# NOISE ABATEMENT COMPLIANCE AUDIT

**\*\* With 100% compliance of Noise Abatement Procedures, there are times aircraft are required depart to the south and arrive from the south. \*\***

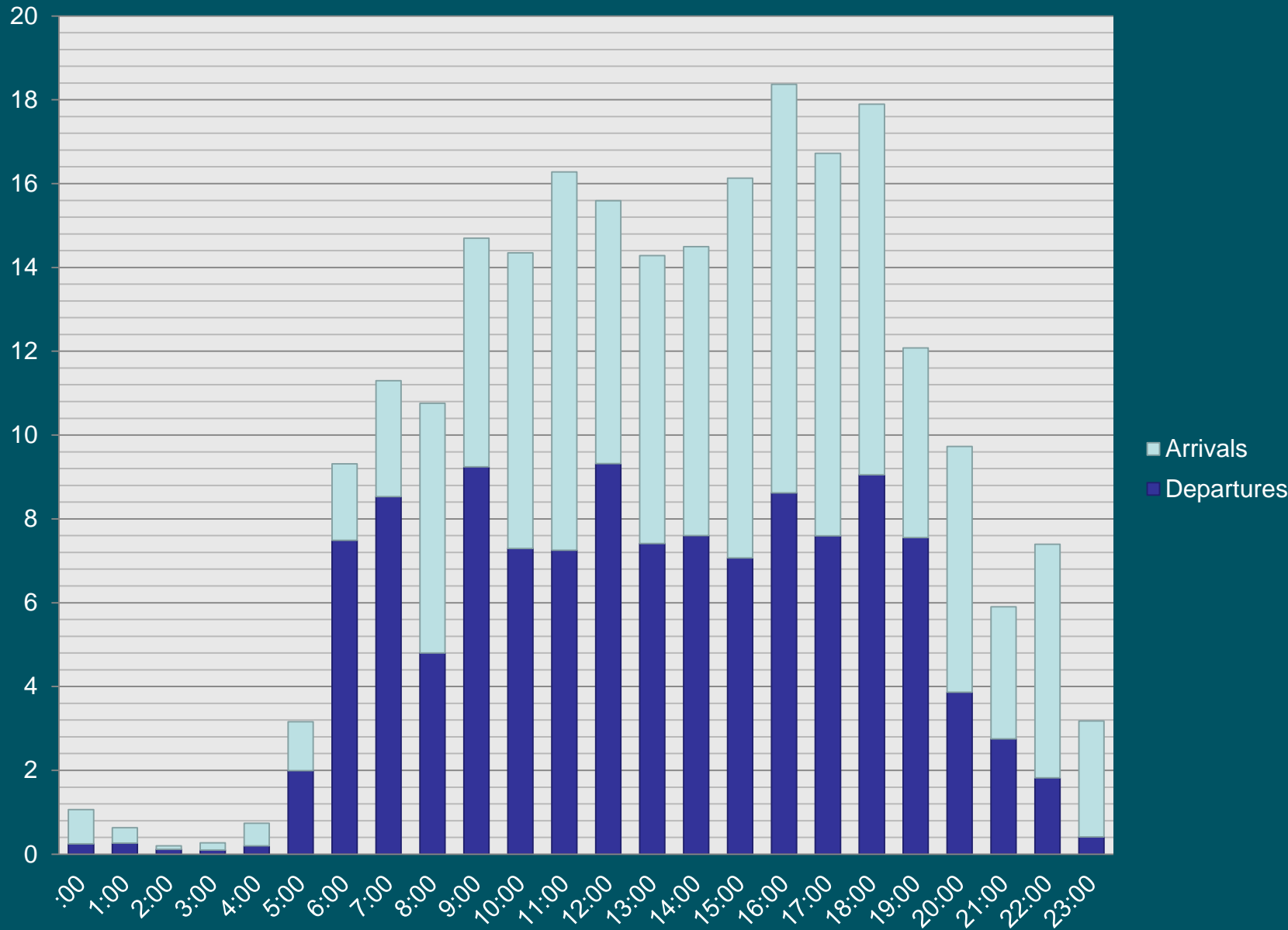
RUNWAY USE FACTORS			
	Wind	Visibility	Ceiling
South Departure	66.87%	4.77%	0.00%
South Arrival	67.38%	4.71%	16.22%

**\*\* Safety, traffic, airline requirements, and weather are all components which are factored into a pilot's decision when landing and taking off. \*\***



# AVERAGE HOURLY OPERATIONS

APR 15 – SEP 15



# CONTACT INFORMATION

20

24 Hour Aircraft Noise Line: **246-5841**

Online Form: <http://www.msnaairport.com/community/noise.aspx>

Madison Automated Weather: **249-0615**



# Questions?

