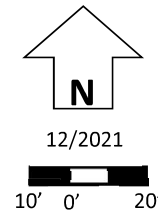
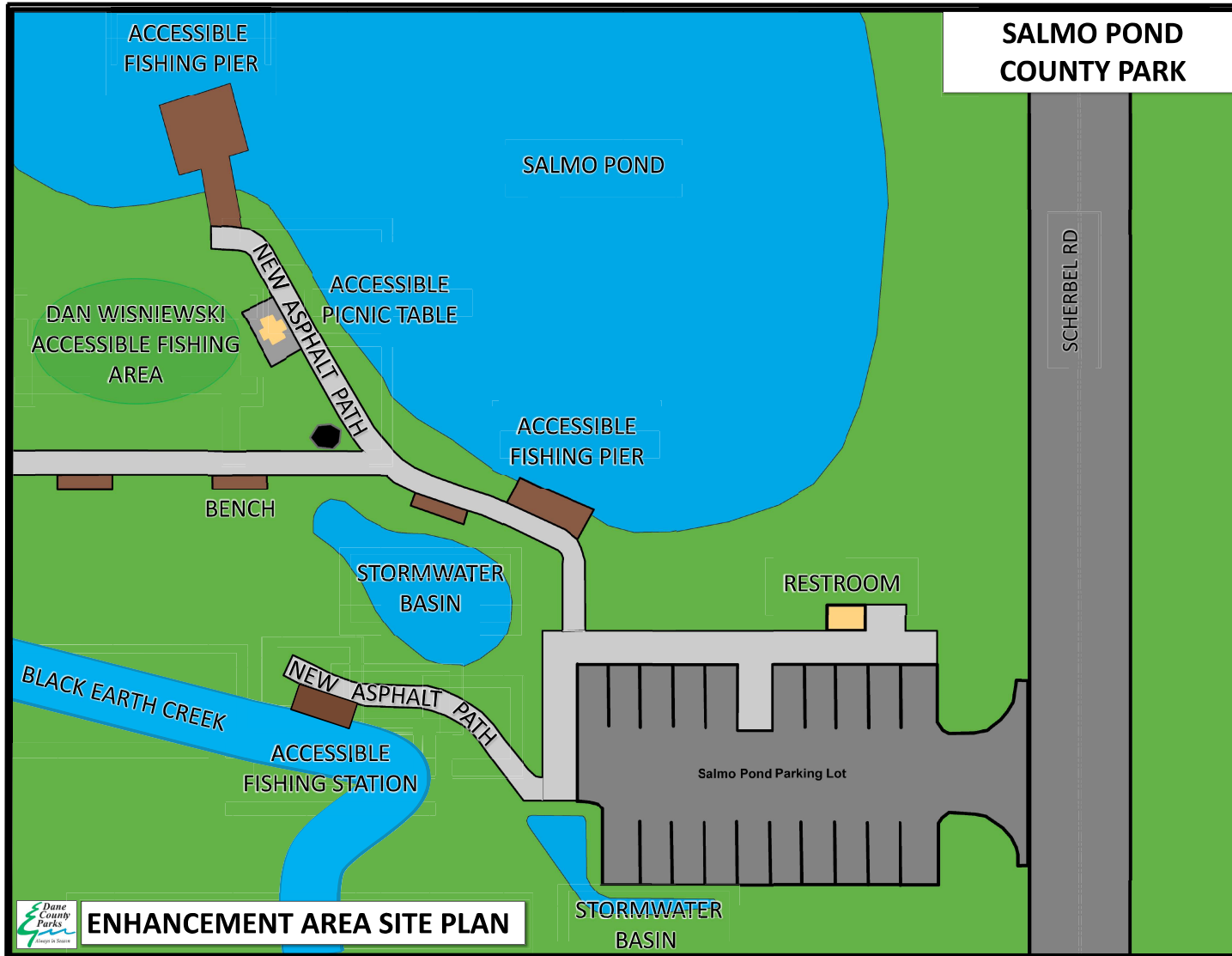


SALMO POND COUNTY PARK

2022 PARKING, STORMWATER AND ACCESSIBILITY IMPROVEMENTS



Dane County Parks will be making improvements to Salmo Pond's parking lot area in 2022. The project will include replacing the restroom building, resurfacing the parking lot and adding storm water infiltration basins to capture and treat runoff before it enters Black Earth Creek. There will also be new paved paths that will improve accessibility for all users to the fishing piers.

More information can be found at:
www.danecountyparks.com/park/SalmoPond

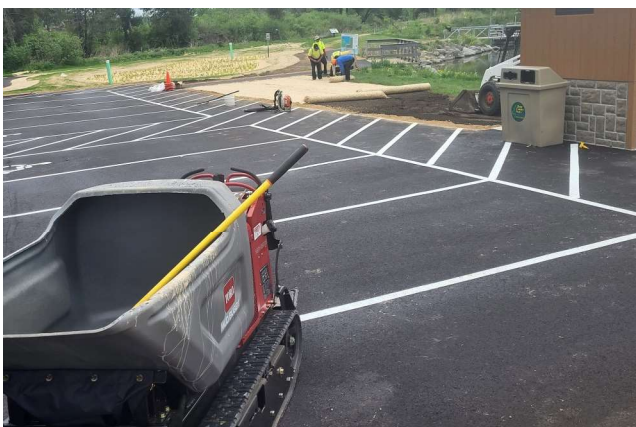
For questions, contact:

Chris James
Senior Landscape Architect
Dane County Parks
(608) 235-2252
james@countyofdane.com

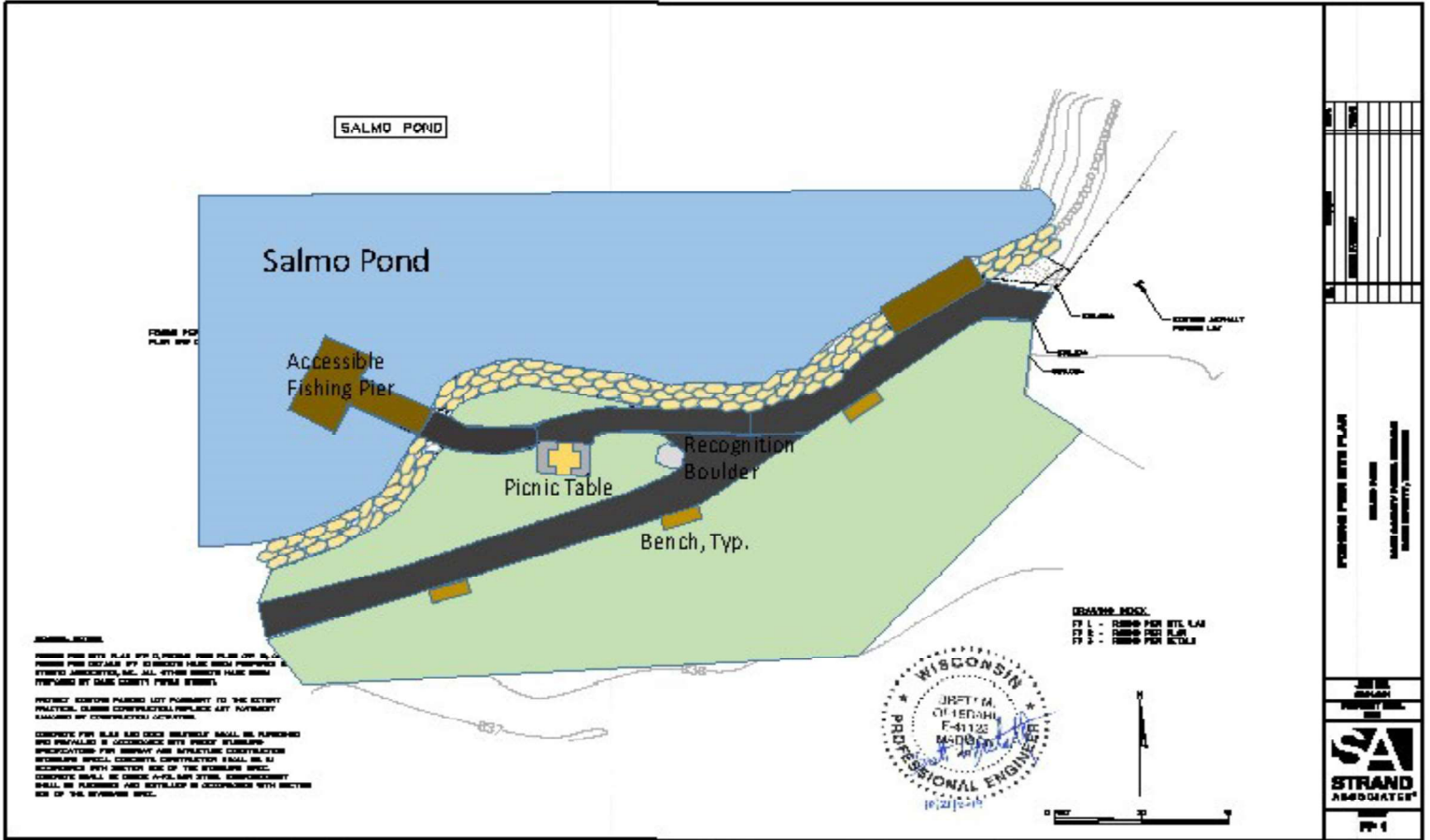


SCAN FOR MORE INFO

Salmo Pond Construction Photos, Spring 2022



Salmo Pond Wisniewski Accessible Fishing Area



PLAQUE SIZE AND LOCATION IS APPROXIMATE