

# Final Plat - Fred - Maple Grove Drive

## City of Madison

Plat consists of 3 lots, 6 outlots, 35.9 acres.

**Parks -** Outlot 6 (5.11 acres) dedicated for parkland.

**Parkways -** none

**Expressways -** N/A

**Major Highways -** USH 18/151 to the south.

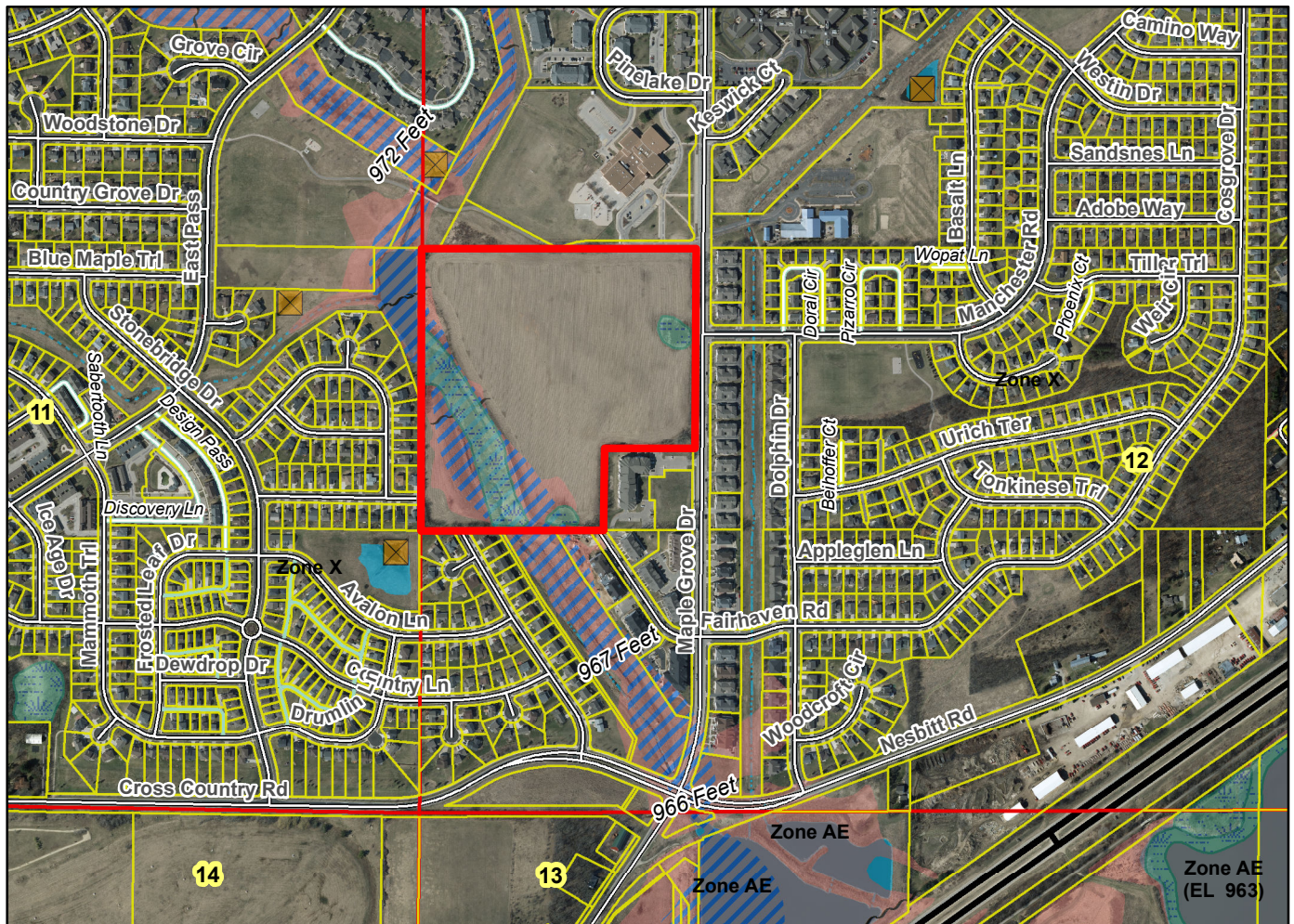
**Airports -** Dane County Regional

**Drainage Channels -** All lots are subject to public easements for drainage purposes.

**Schools -** established

**Other Development -** OL 4 reserved for future development.

Plats of subdivisions located in all other incorporated municipalities shall be submitted to the committee, as provided by section 236.12(2)(b) of the Wis. Stats., for the purpose of determining whether the committee has any objection to the plat. The basis for any objection to any such plat shall be that the plat conflicts with parks, parkways, expressways, major highways, airports, drainage channels, schools or other planned public developments.



Motion to certify with no objections: \_\_\_\_\_, Second: \_\_\_\_\_ Vote: \_\_\_\_\_