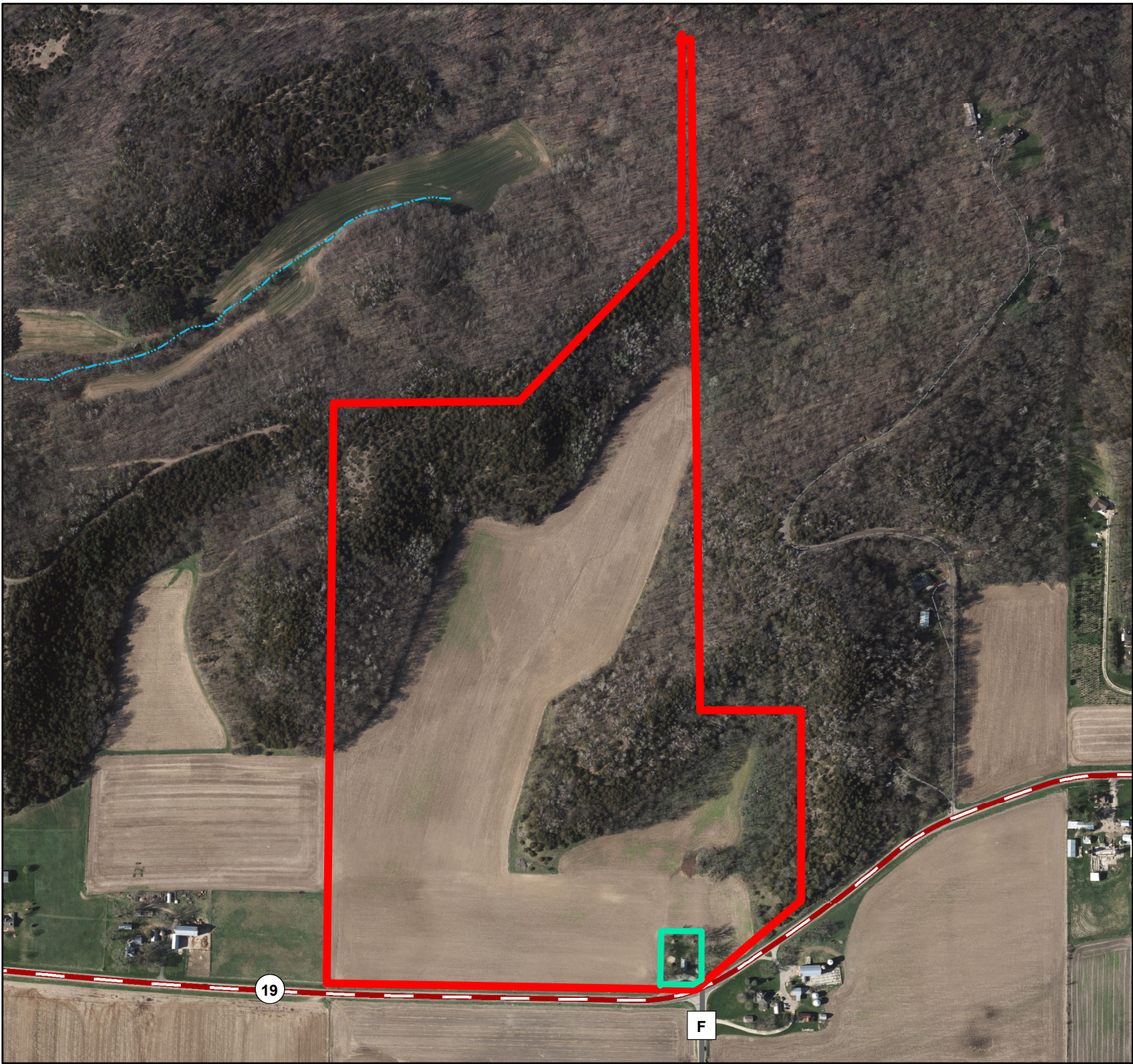




Cleo I. Brockmann Revocable Living Trust parcel  
Approx. 74 acres, Town of Mazomanie, Halfway Prairie School



-  Brockmann parcel
-  County owned - Halfway Prairie School



Data Sources:  
Tax Parcels (3-2018)  
Digital orthophoto from April 2017.

Prepared by Dane County Land & Water Resources Department, January 16, 2020

Document Path: H:\LandAcquisition\AcquisitionProjects\Mazomanie\Brockmann\Maps\mxd\Brockman\_HalfwayPrairie\_subject.mxd

