



Parks Operations

Dick Black - Parks Operations Manager

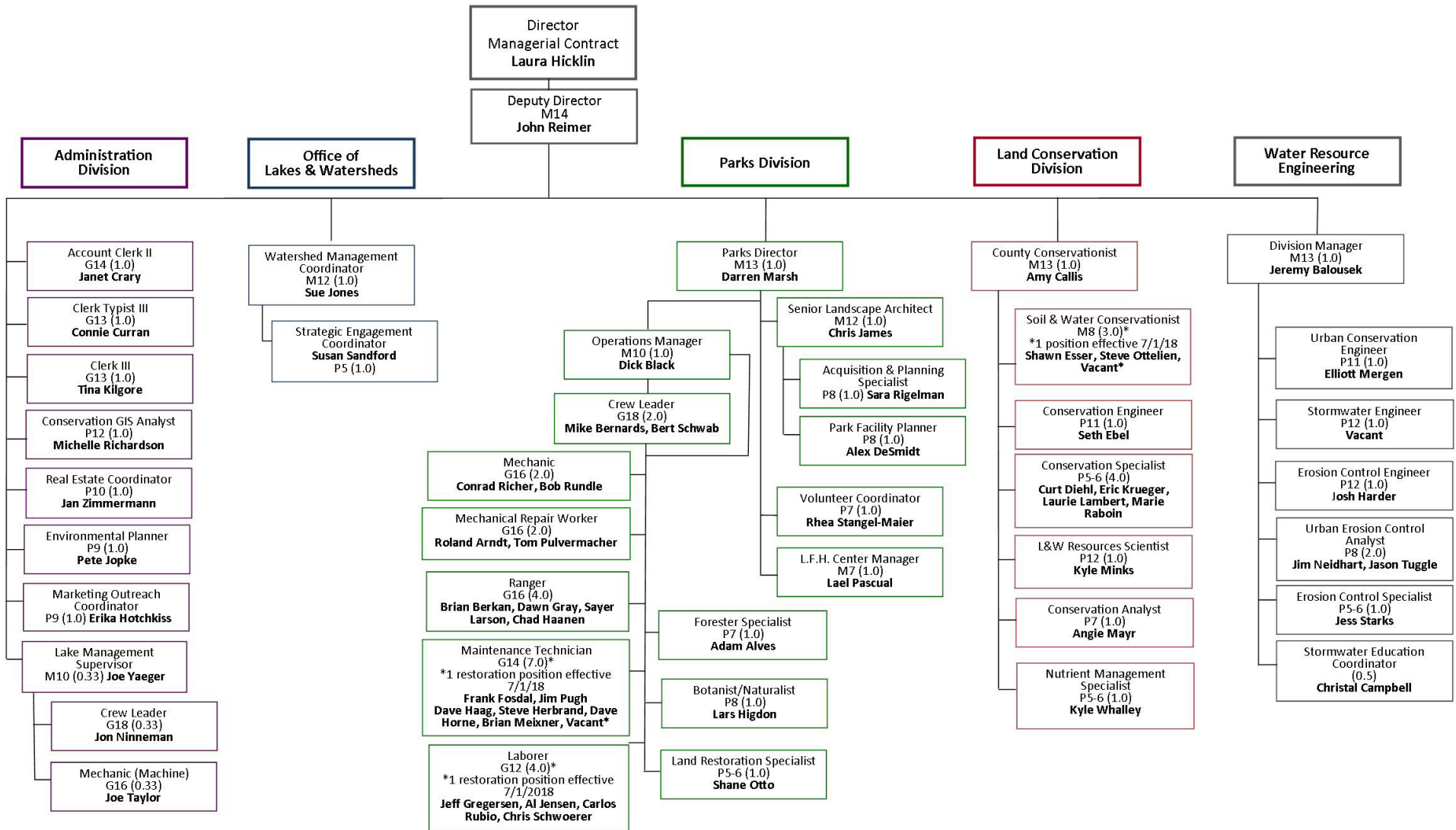
Position is responsible for:

- Daily operations of all park lands
- Park Services – shelter, camping trail use
- Maintenance of facilities & grounds
- Revenue Collection
- Supervision of Operations staff
 - 19 Park FT Staff
 - 4 Park Professional Staff
 - 25 LTE Summer Staff

New Positions Added 2018-2019

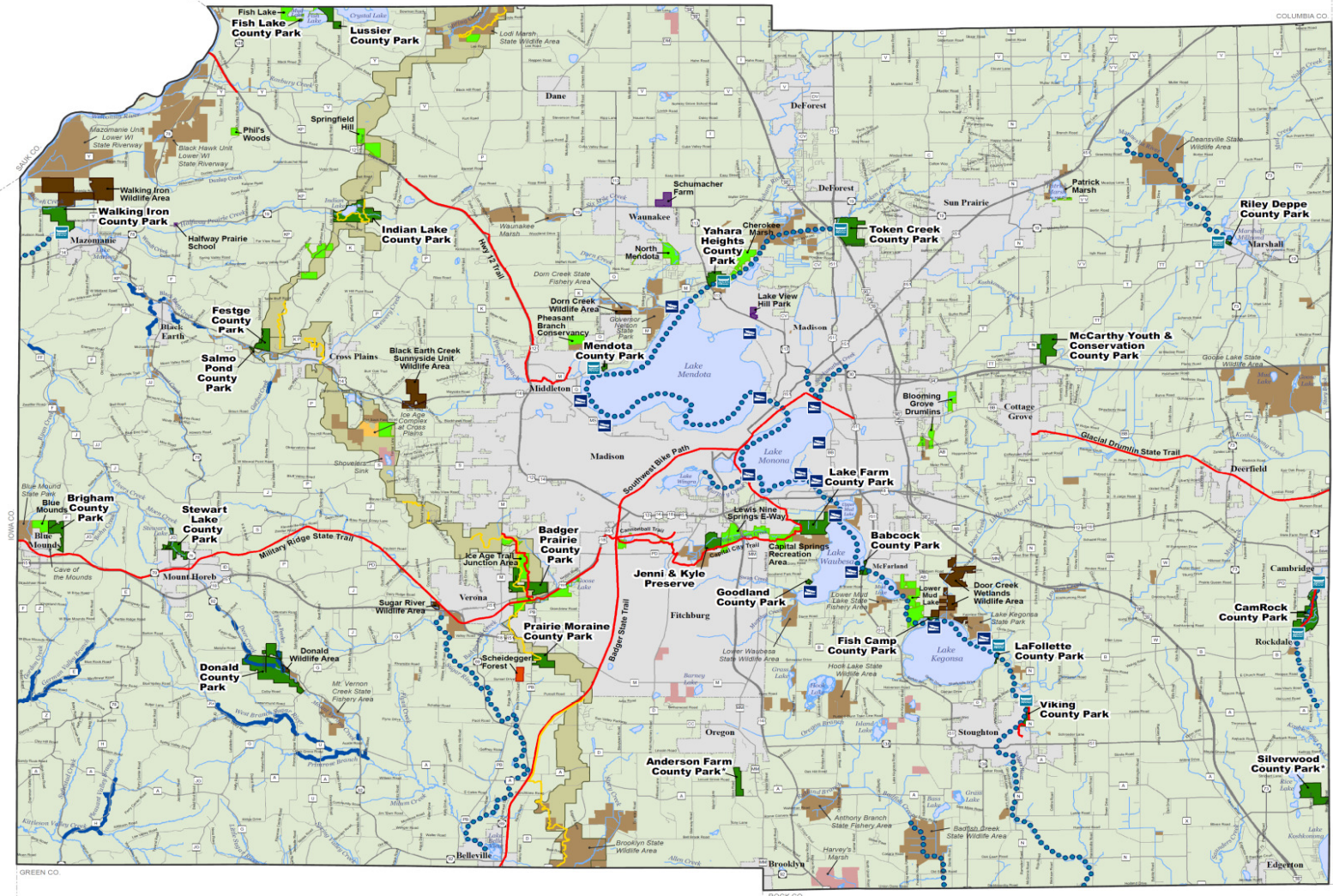
- Streambank Restoration Staff
- New position – Lead Ranger

Organizational Chart for the Dane County Land & Water Resources Department





Dane County Park System - over 15,000 acres of land 2018 providing services for over 2.5 million people



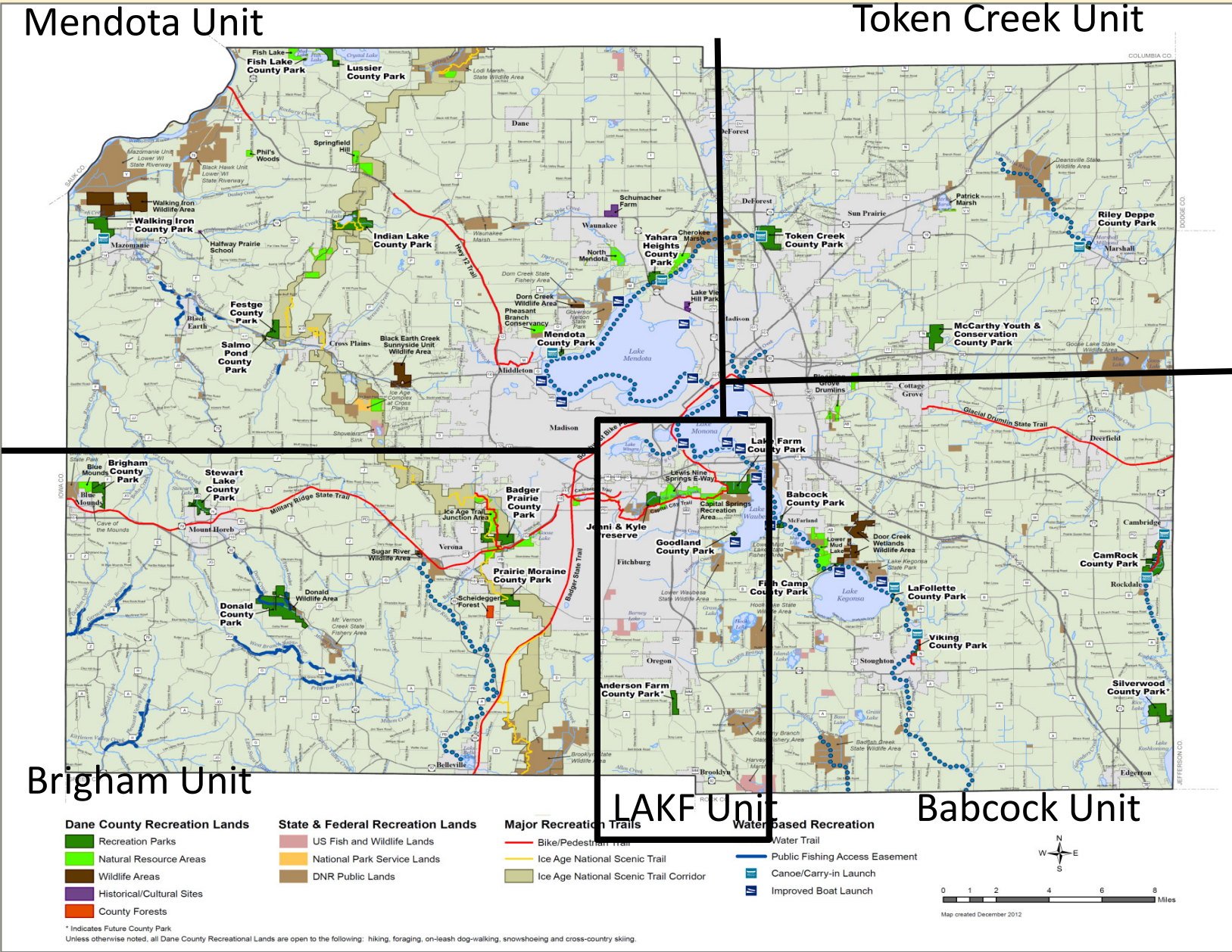
<p>Dane County Recreation Lands</p> <ul style="list-style-type: none"> Recreation Parks Natural Resource Areas Wildlife Areas Historical/Cultural Sites County Forests 	<p>State & Federal Recreation Lands</p> <ul style="list-style-type: none"> US Fish and Wildlife Lands National Park Service Lands DNR Public Lands 	<p>Major Recreation Trails</p> <ul style="list-style-type: none"> Bike/Pedestrian Trail Ice Age National Scenic Trail Ice Age National Scenic Trail Corridor 	<p>Water-based Recreation</p> <ul style="list-style-type: none"> Water Trail Public Fishing Access Easement Canoe/Carry-in Launch Improved Boat Launch
--	--	--	--

Map created December 2012

* Indicates Future County Park
Unless otherwise noted, all Dane County Recreational Lands are open to the following: hiking, foraging, on-leash dog-walking, snowshoeing and cross-country skiing.



Park Work Units



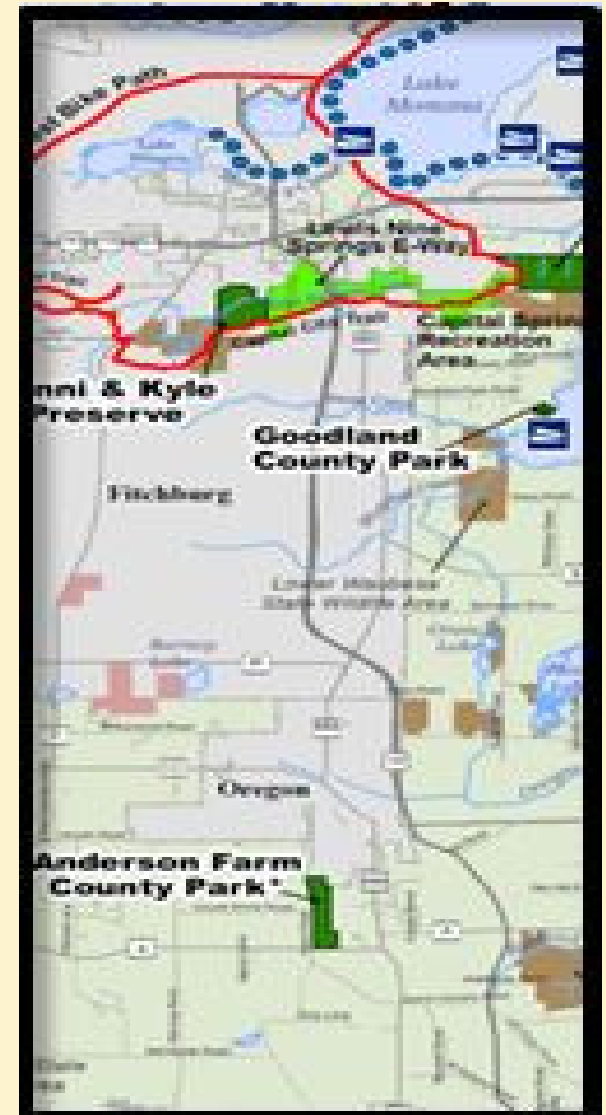


Capital Springs Work Unit

Ranger – Chad Haanen

4 LTE

- Anderson Farm County Park
- Goodland County Park
- Capital Springs Recreation Area
 - Lake Farm
 - Jenni & Kyle
 - Capital City & Lower Yahara River Trail
 - Nine Spring E-Way



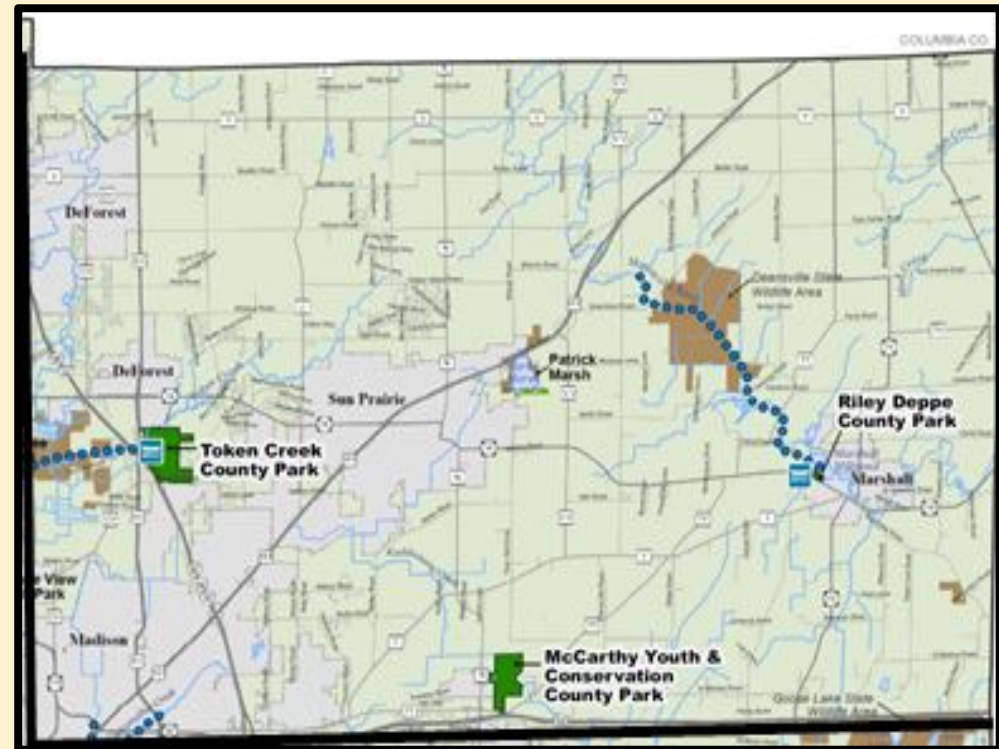


Token Creek Work Unit

Ranger Larson

3 LTE

- Token Creek County Park
- McCarthy Youth Conservation County Park
- Riley Deppe County Park



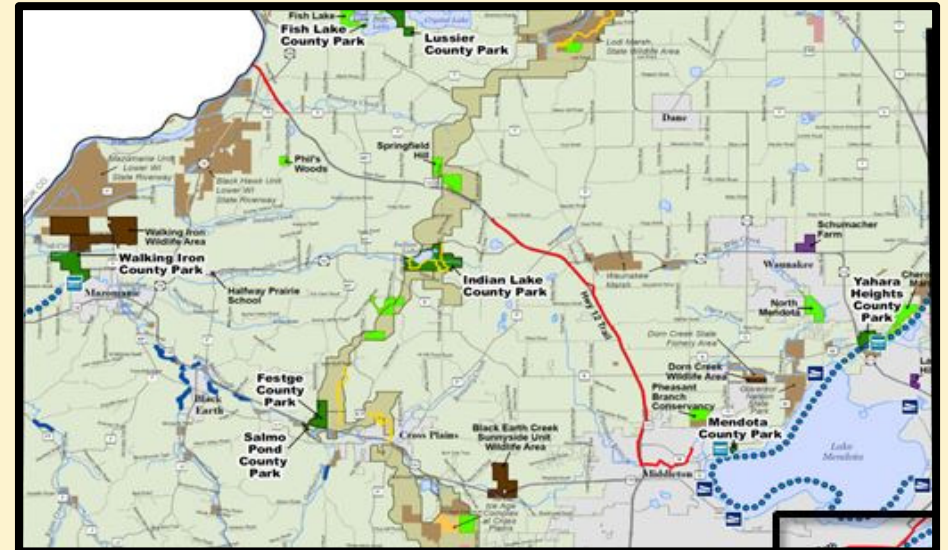


Mendota Work Unit

Ranger Dawn Gray

3 LTE

- Walking Iron County Park
- Festge County Park/Salmo Pond
- Indian Lake County Park
- Lussier County Park
- Fish Lake County Park
- Mendota County Park
- Yahara Heights County Park
- Schumacher Farm County Park
- Phils Woods
- Halfway Prairie – School House County Park
- Tenney Locks



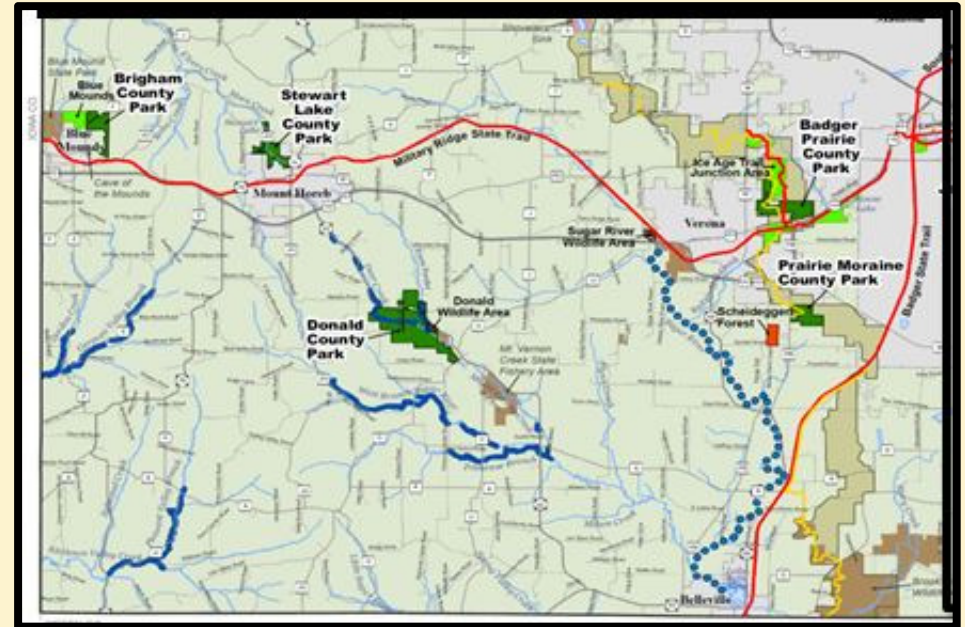


Brigham Work Unit

Ranger Brian Berkan

3 LTE

- Brigham County Park
- Stewart Lake County Park
- Donald County Park
- Badger Prairie County Park
- Prairie Moraine County Park





Babcock Park Unit

Ranger Larson

3 LTE

- Babcock County Park
- Fish Camp County Park
- Viking County Park
- CamRock County Park
- LaFollette County Park
- Silverwood Farm County Park





Public Contact –Park Rangers & Work Units

- Education & Enforcement of Rules-Issue Violation Notice and Citations
- Oversight Park Unit – maintenance/operations
- Outreach Programs, event and volunteer support
- Snowmobile Trail Inspection



Facilities and Maintenance

Mike Bernards Crew Leader

Mechanical Repair Workers and Park Maintenance Technicians

- Specializing in plumbing/carpentry/electrical/heating & cooling
- Maintenance of facilities and signage. Repairs and painting
- Maintenance of playgrounds and park furniture

Buildings, facilities, piers, playgrounds, benches, boardwalks, water systems, sewer systems, electrical systems etc.



Development Projects and Major Maintenance – Bert Schwab

- Park Maintenance Technician
- Heavy duty equipment operations
- Laborers – grounds maintenance crew, construction crew
- Developing specifications for equipment purchases
- Trail maintenance
- Streambank restoration



Grounds Maintenance Crews – Laborers – mowing, mulching, trimming trees & snow removal.

- 3 crews (2 ft. staff and 3 LTE)
- Around 900 – 1,000 acres – more added each year
- Contracted mowing to other agencies
 - Dane County Law Enforcement Training Center
 - 911 Towers
 - Badger Prairie Healthcare Facilities



Mechanics – Conrad Richer and Bob Rundle

Maintains all fleet vehicles, trailers and equipment.

- Preventative maintenance on vehicles- Parks & LWRD Dept.
- Repairs on all units and records of maintenance
- Fabrication on specialized equipment
- Inventory: 49 fleet vehicles, 32 trailers, 22 mowers
- Maintenance on heavy equipment and attachments
- Support for volunteer equipment



Forestry – Adam Alves and Dave Haag

- Monitor Tree Inventory
- Tree Removals
 - Assess health - hazardous & safety issues
 - Storm damage
- Tree Plantings
- Education/Public Outreach
 - Chainsaw Safety Training



Winter Maintenance

33 different areas maintained

- Parking lots/roadways/lake access/Dog Parks

Ski Trails Groomed

- Token Creek
- CamRock
- Lake Farm
- E-Way
- Indian Lake



Land Restoration – Lars Higdon and Shane Otto

- Land Management Restoration -
(prairies, oak savannas, woodlands)
- Prairie Seed Program – planting, cleaning, collection
- Prescribed Burn Program – staff & volunteers
- Policy & Procedures for large volunteer program
- Public outreach/education – school groups, youth- adults
- Streambank improvement



Parks Operations

Questions or Comments?

Dick Black

Dane County Parks Operations Manager

4318 Roberston Road

Madison, WI 53714

608-242-4577

black@countyofdane.com