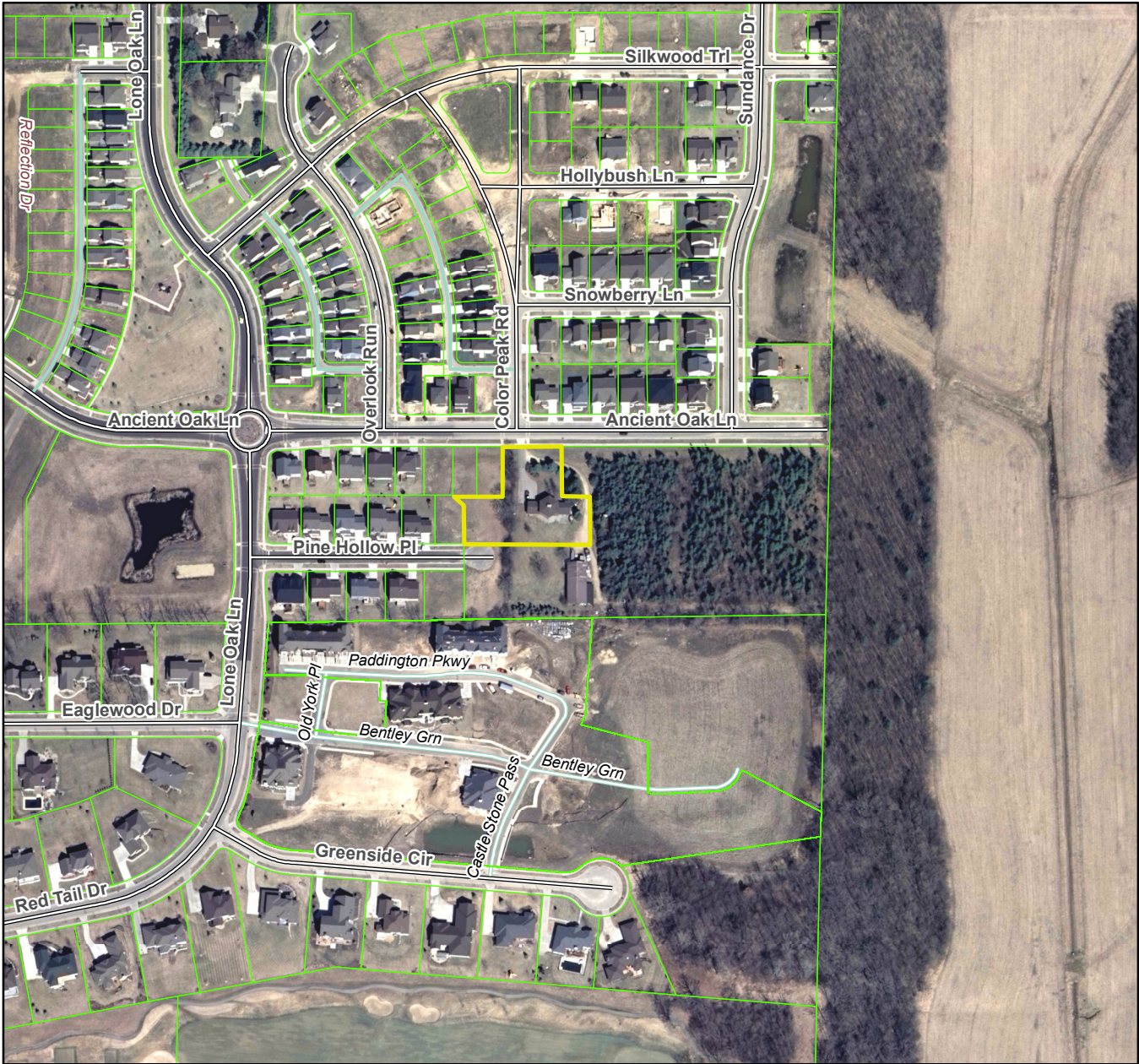


First Addition to Hawk's Crossing City of Madison T07N R08E, Section 34



Plat consists of 5 lots, 1.01 acres.

Parks – None shown.

Parkways – N/A

Expressways – N/A

Major Highways – Hwy M to the east.

Airports – Dane County Regional Airport (18 mi)

Drainage Channels – All lots within the plat are subject to public easements for drainage purposes.

Schools – Established.

Other Planned Public Improvements - None shown.