



Dane County

Minutes - Draft

Park Commission

Consider:

Who benefits? Who is burdened?

Who does not have a voice at the table?

How can policymakers mitigate unintended consequences?

Wednesday, June 9, 2021

5:30 PM

Virtual Zoom Meeting: See top of agenda for instructions on how to join the webinar or call in by phone

A. Call To Order

Chair Ripp called the meeting to order at 5:31 PM.

Staff Present: Darren Marsh, Joleen Stinson, Sharene Smith, Chris James.

Others Present: Jim Welsh, Groundswell Conservancy Executive Director.

Present: 6 - NANCY BOGUE, STEFANIE BROUWER, ANALIESE EICHER, DAVE RIPP, TOM THORESEN and GRACE MORAN

Excused: 1 - KRISTIE GOFORTH

B. Consideration of Minutes

[2021
MIN-104](#)

Minutes of the May 26, 2021 Park Commission Meeting

Attachments: [2021 PC MINUTES 5-26-21](#)

A motion was made by BROUWER, seconded by MORAN, that the Minutes be approved. The motion carried by a voice vote 6-0.

C. Fund Transfers - None

D. Referrals (Resolutions & Ordinance Amendments) - None

E. Items Requiring Committee Action - None

F. Presentations

1. Groundswell Conservancy, Conservation Fund Grant Application – Black Earth Creek NRA

Jim Welsh presented two projects to be considered for the Conservation Fund. Both in the Black Earth Creek Natural Resource Area. One is 111 acre easement and the second is a 38 acre land sale. The properties are envisioned to reduce impervious area in the watershed, provide natural buffers to Black Earth Creek and provide for a future segment of the Black Earth Creek multi use trail between Mazomanie and Middleton. Both items will be brought back for formal consideration at a later meeting.

G. Reports to Committee

1. Friends Capital Improvement Grant Application Cycle

Joleen Stinson announced a second cycle of the Friends Capital Improvement Grant Program using remaining budgeted funds. This grant program provides matching funds to Friends groups and other nonprofit organizations to implement capital improvements on Dane County parkland. Parks partnered with the Dane County Environmental Council to simplify the application process for both grant programs. Grant applications are due August 2, 2021. Staff will review and recommend projects to the Park Commission for consideration.

2. Memorial Day Weekend Report

Joleen Stinson presented shelter and campground reservation numbers from Memorial Day Weekend. The campgrounds were full and shelter reservations were also strong. Joleen acknowledged the fabulous Park Rangers and Park Attendants. They helped make a very successful holiday weekend.

H. Future Meeting Items and Dates

June 23, 2021 CamRock County Park Shelter #3

July 14, 2021 Virtual Meeting

I. Public Comment on Items not on the Agenda

J. Such Other Business as Allowed by Law

K. Adjourn

Chair Ripp adjourned the meeting at 6:14 PM.

Minutes respectfully submitted by Joleen Stinson, pending Park Commission approval.



GROUNDSWELL
CONSERVANCY



PROTECTING SPECIAL PLACES,
FOREVER



BLACK EARTH CREEK NATURAL RESOURCE AREA

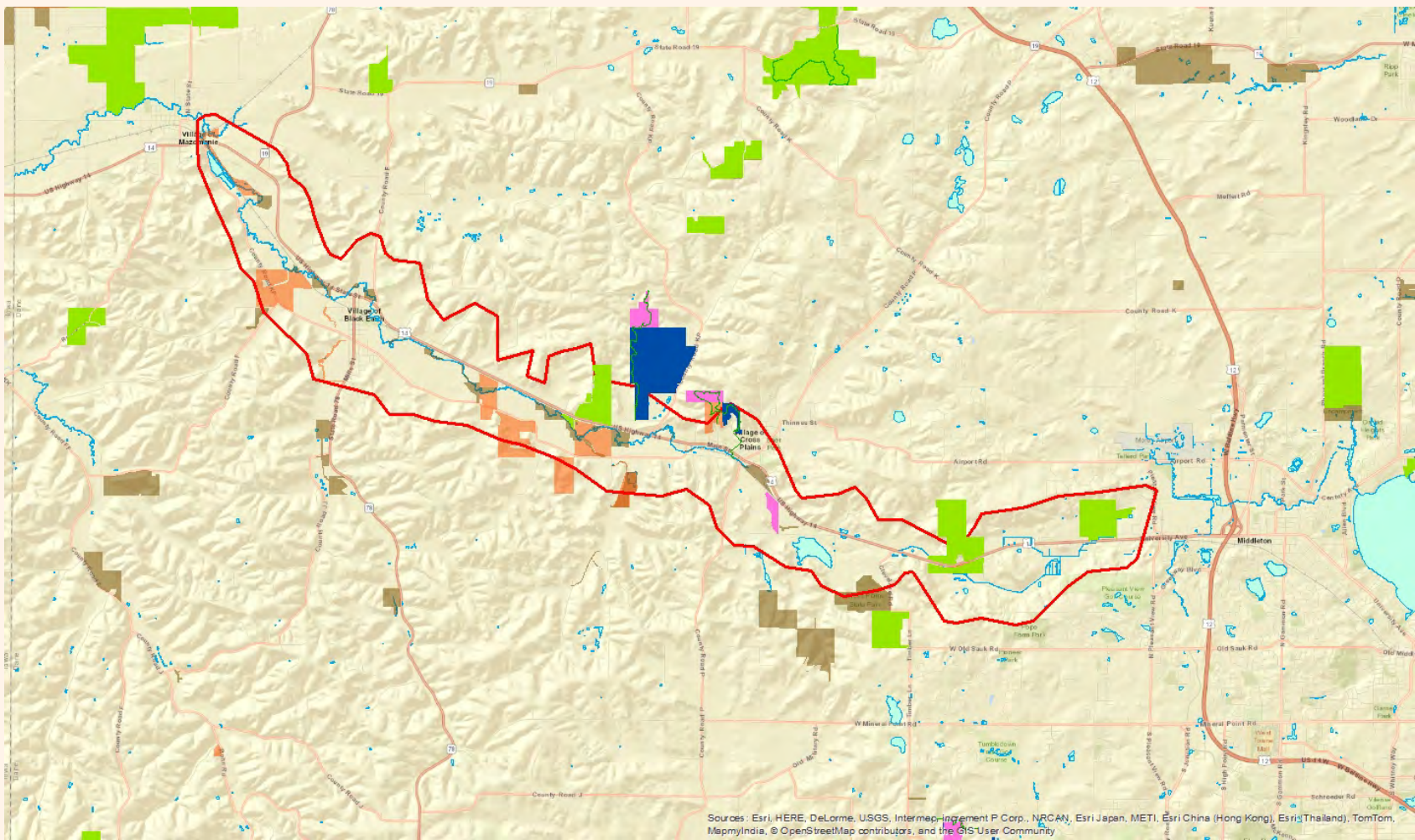
PROTECT WATER QUALITY/LIMIT
IMPERVIOUS SURFACES/PRESERVE HIGH-
QUALITY FARM SOILS

FILL IN GAPS IN PUBLIC OWNERSHIP

CREATE MORE OPPORTUNITIES FOR
PUBLIC ACCESS & ENJOYMENT

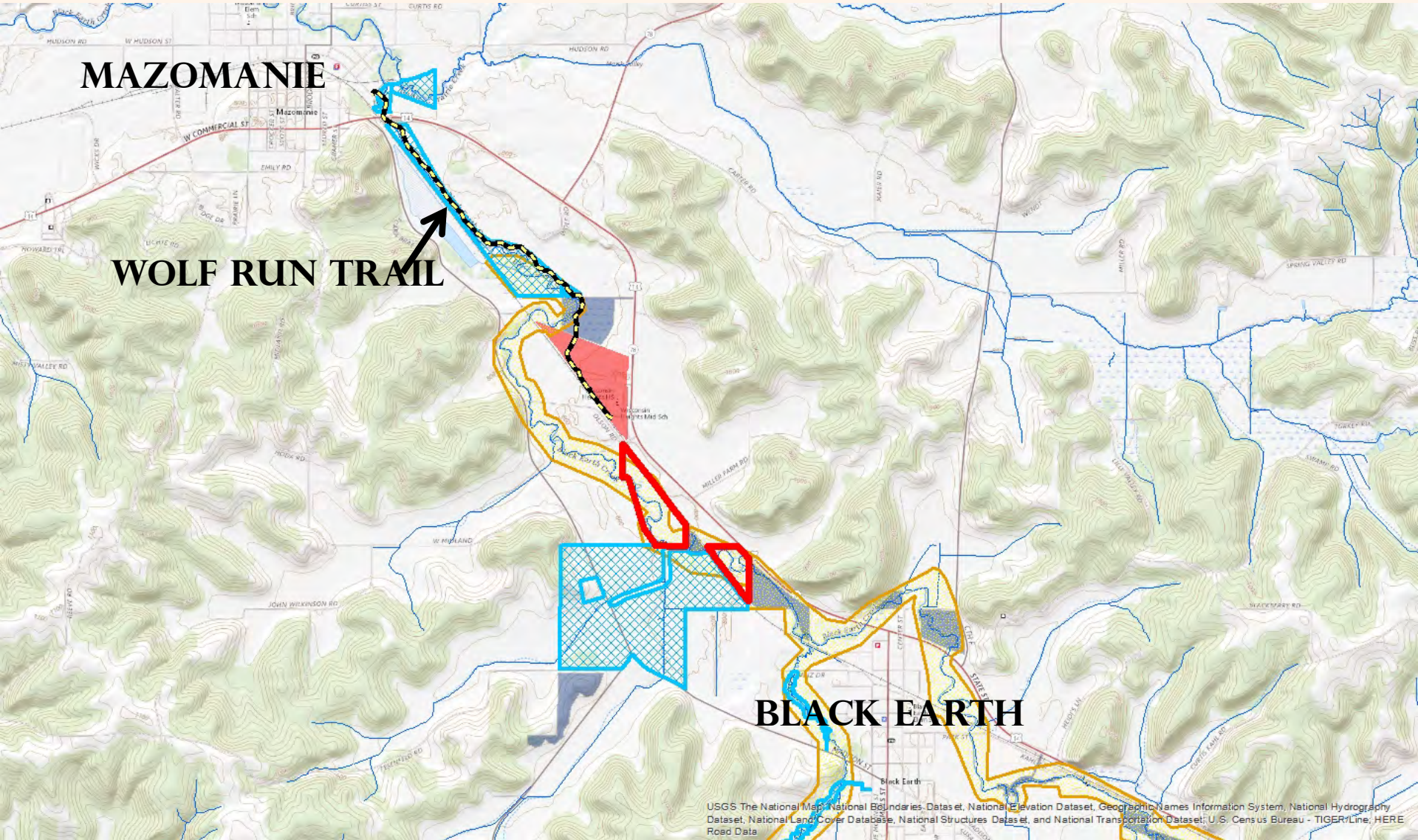
EXTEND THE BLACK EARTH CREEK
BIKE/HIKE TRAIL

MANY PARTNERSHIPS: LANDOWNERS, DANE COUNTY, DNR, GROUNDSWELL, ICE AGE TRAIL



OLSON ACQUISITION

38 ACRES



MAZOMANIE

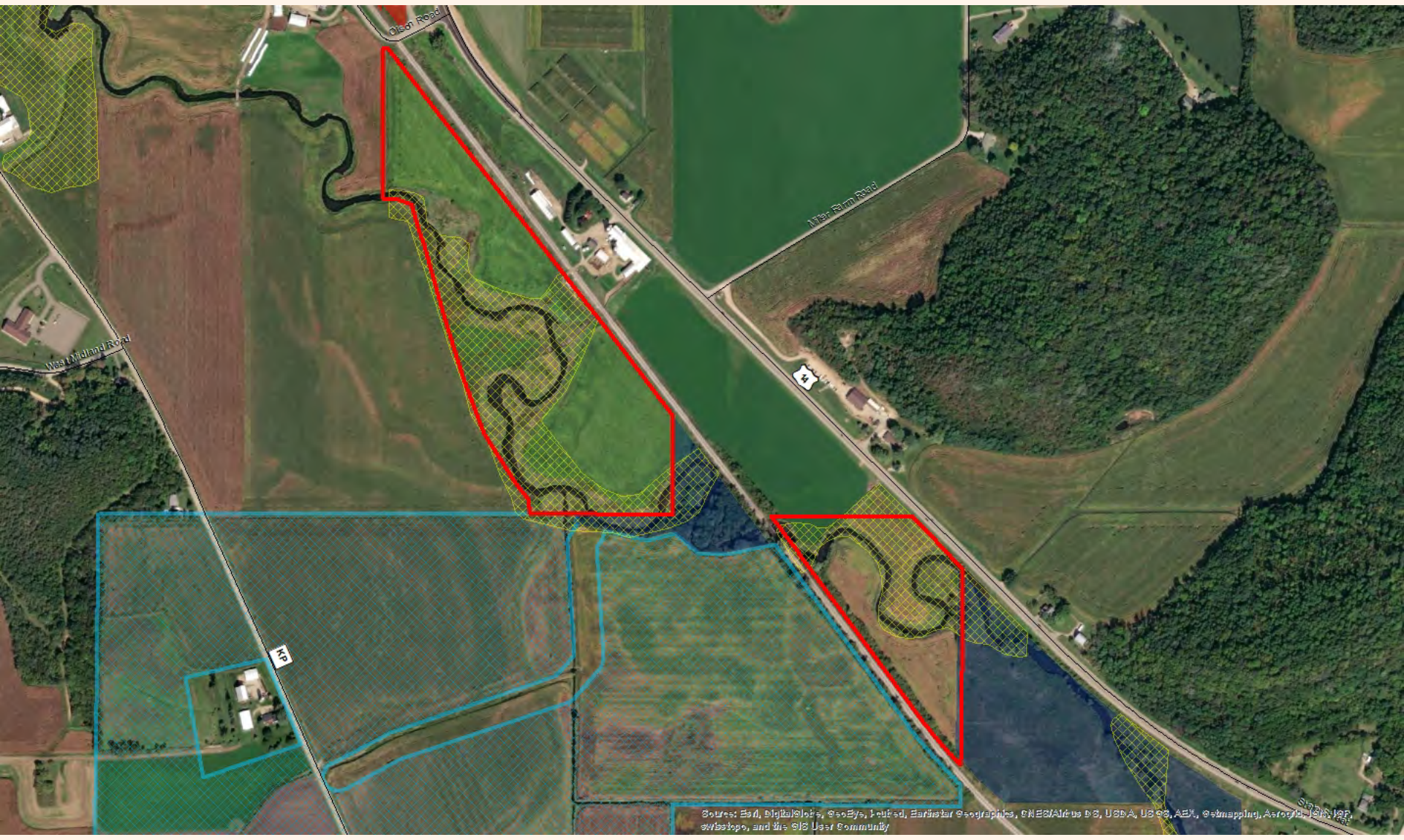
WOLF RUN TRAIL

BLACK EARTH

USGS The National Map, National Boundaries, Datasets, National Elevation Dataset, Geographic Names Information System, National Hydrography Dataset, National Land Cover Database, National Structures Dataset, and National Transportation Dataset; U.S. Census Bureau - TIGER/Line, HERE Road Data

OLSON ACQUISITION

38 ACRES



OLSON ACQUISITION

38 ACRES

\$300,000

50% SECURED FROM
STEWARDSHIP PROGRAM

PARTNERS: TROUT UNLIMITED

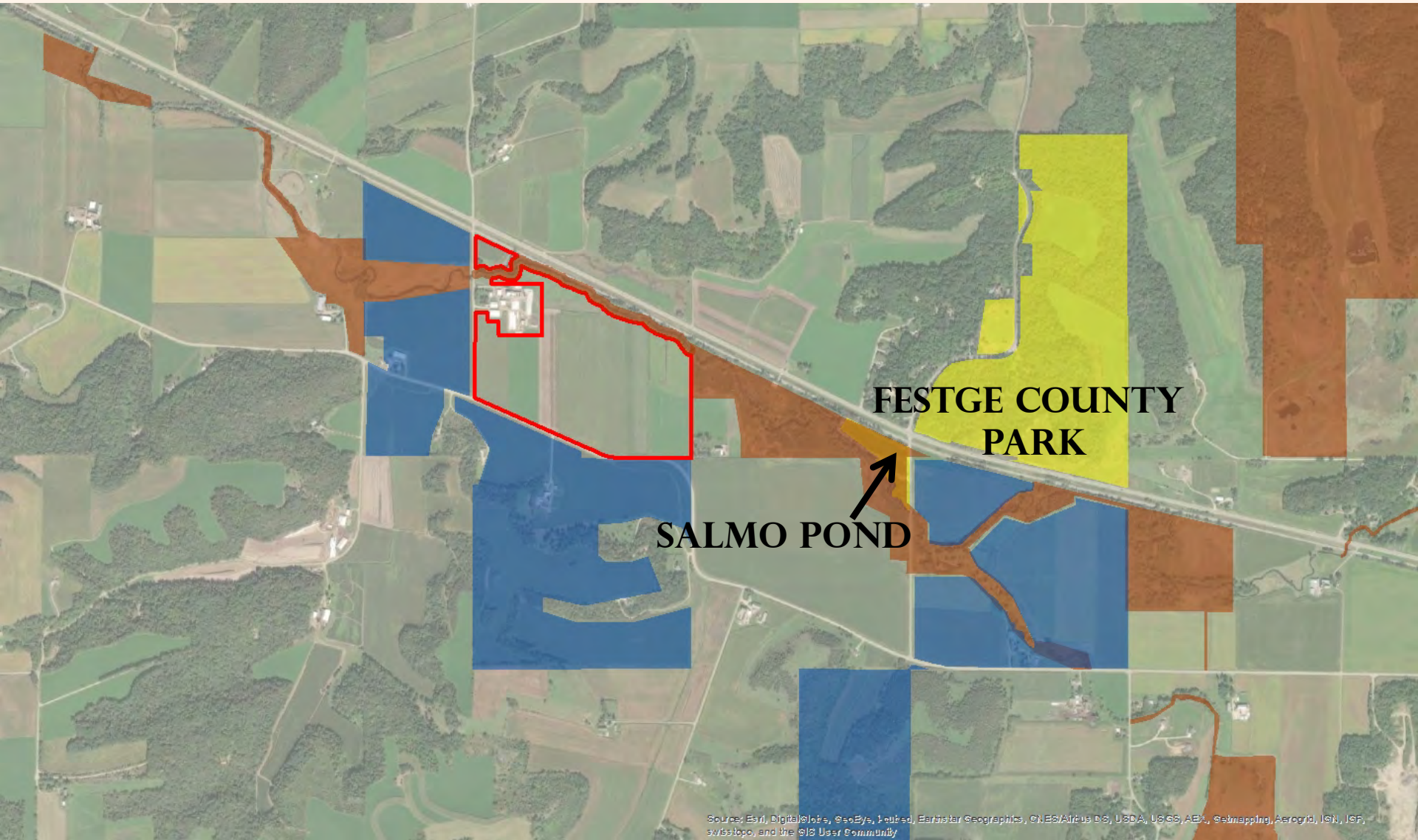
HABITAT RESTORATION

PERMANENTLY REMOVE OBSTACLE TO
PADDLERS

CREATE FUTURE LINK IN BLACK EARTH CREEK
TRAIL

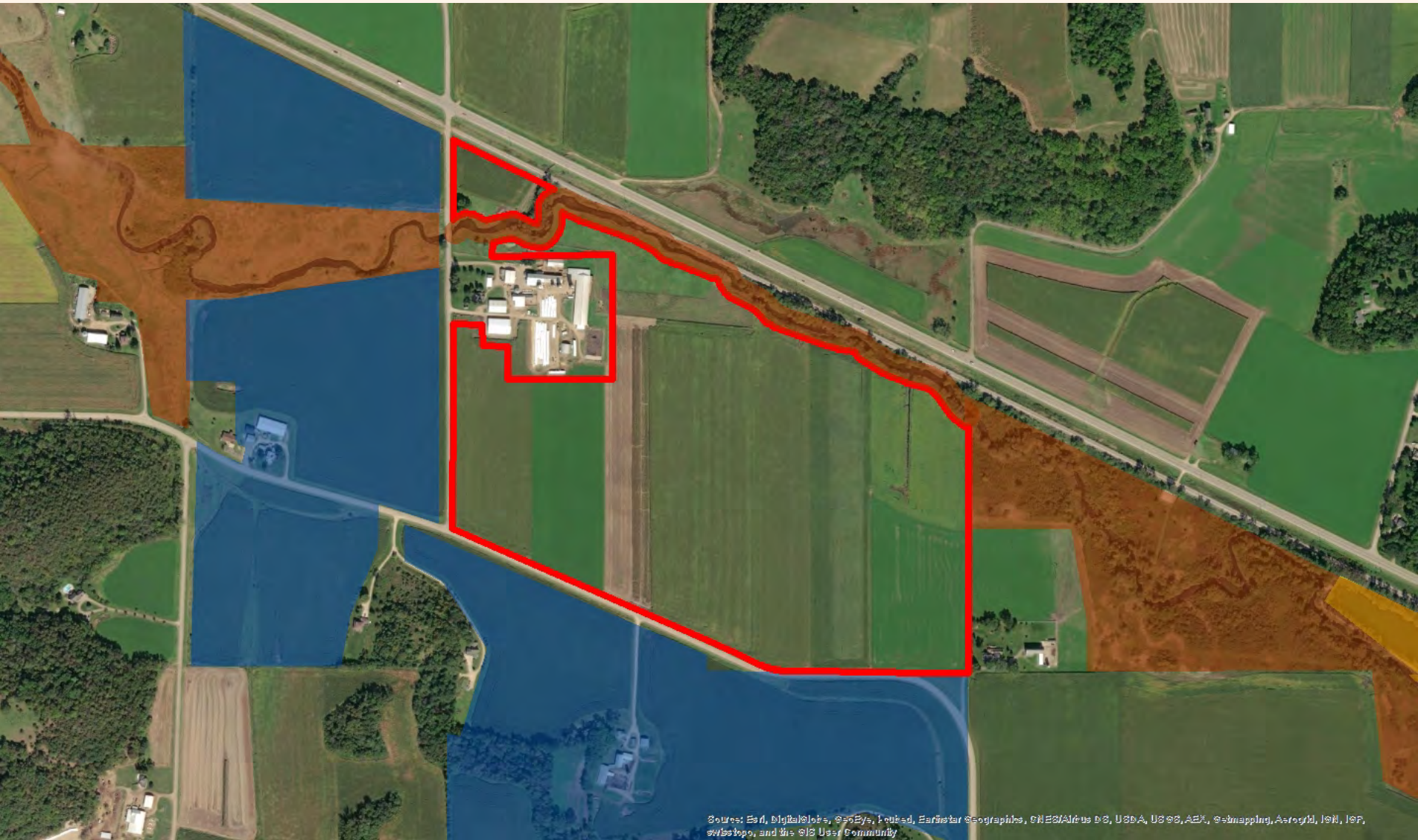
BLACK EARTH VALLEY FARMS EASEMENT

111 ACRES



BLACK EARTH VALLEY FARMS EASEMENT

111 ACRES



Source: Esri, DigitalGlobe, GeoEye, Earthstar Geographics, CNES/Airbus DS, USDA, USGS, AeroX, Swisstopo, and the GIS User Community

BLACK EARTH VALLEY FARMS EASEMENT

111 ACRES

\$478,300

44% SECURED FROM USDA

GROUNDSWELL WOULD BE RESPONSIBLE FOR
UPHOLDING THE EASEMENT TERMS

LIMIT IMPERVIOUS SURFACE
CONSISTENCY WITH FARM PLANS
CREATE FUTURE LINK IN BLACK EARTH CREEK
TRAIL



GROUNDWELL
CONSERVANCY

