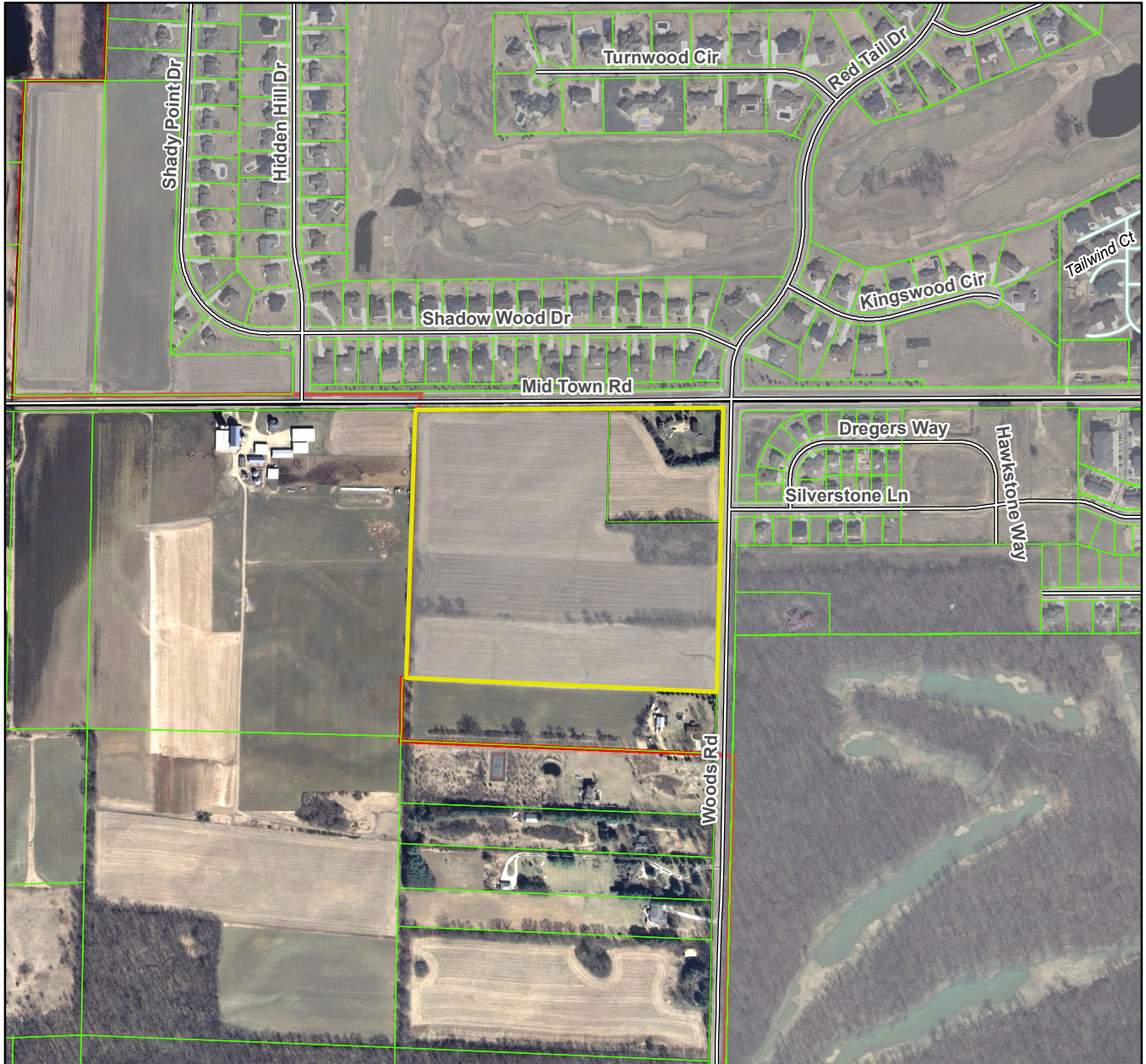


Hawks Valley

City of Madison T06N R08E, Section 4



Plat consists of 101 lots, 34 acres.

Parks – OL 2 to be dedicated to the public for park purposes.

Parkways – N/A

Expressways – N/A

Major Highways – Hwy M to the east.

Airports – Dane County Regional Airport (19.5 mi)

Drainage Channels – All lots within the plat are subject to public easements for drainage purposes.

Schools – Established.

Other Planned Public Improvements - OL 1 dedicated to the public for stormwater management.