



2019-2021

# LEGISLATIVE AGENDA

# Contents

General Principle.....	3
Surface and Ground Water Quality.....	4
Natural Resources Conservation .....	6
Sustainable Agricultural Practices .....	7
Climate Change: Mitigation, Adaptation & Resilience .....	8
Environmental Health .....	10
Access to High Quality Health Care .....	11
Economic Assistance .....	12
Services for Older Adults, the Developmentally/Physically Disabled, and Mentally Ill.....	13
Services for Children, Youth, and Families .....	15
Youth Justice .....	17
Public Health Services .....	18
Housing .....	19
Veterans Services .....	20
County Personnel, Finance, and Governance.....	21
Public Safety and Emergency Management .....	24
Criminal Justice and Corrections .....	25
Immigrants and Refugees .....	27
Bicycle and Recreational Trails .....	28
Mass Transit .....	29
Local Road Funding and Projects .....	30
Waste and Renewables .....	31
Land Use, Land Records, and Land Regulation .....	32
Elections .....	34
Community, Workforce, and Economic Development.....	35
Arts .....	36

# General Principle

The state shall foster equitable and inclusive opportunities for all state residents by supporting and funding proactive, evidence-based programs and policies that advance the elimination of racial and socioeconomic disparities and recognize the unique role counties play in administering state programs by:

1. Fairly sharing responsibility with counties in determining the scope, design, and cost of statewide programs.
2. Providing adequate and predictable shares of funding for state services delivered by counties.
3. Helping counties reduce the need to rely on property taxes.
4. Enhancing the ability of counties to more effectively manage county government.

# Surface and Groundwater Quality

---

**Water Quality:** Maintain level of DNR funds for water quality planning and watershed projects. Support increased DNR financial assistance as an incentive to reduce nonpoint source pollution. Seek a fair share of state funding for inland waterways and lakes. Target state funds to where there is a high likelihood of project success, where recipient units of government have a proven track record of meeting state and local water resource goals. Support legislation to provide additional funding and staffing for local water quality protection, improvement, and unfunded mandates.

**Soil Erosion:** Support full implementation and funding of the state's water quality and established runoff pollution performance standards for agriculture, non-agriculture, and transportation facilities standards.

**Stormwater Utility:** Amend the WI Stats. to allow counties to create and manage stormwater utilities. Support local control of Erosion and Storm Water Management Standards. Oppose standardizing regulation of construction site erosion, stormwater management, and prohibiting local governments from enacting local ordinances that are stricter than statewide standards.

**Comprehensive Approach to Control Lake Levels:** Request the DNR to adopt a comprehensive approach to managing the levels of the lakes through collaboration with affected parties, including dam operators, municipalities, and regulatory agencies toward improving natural hydrologic conditions and habitat. To address recent flooding, support efforts to manage the Yahara Chain of Lakes, improve the volume of water leaving the Yahara River system, and reduce stormwater runoff volumes through increased stormwater infiltration and better management of stormwater on impervious surfaces.

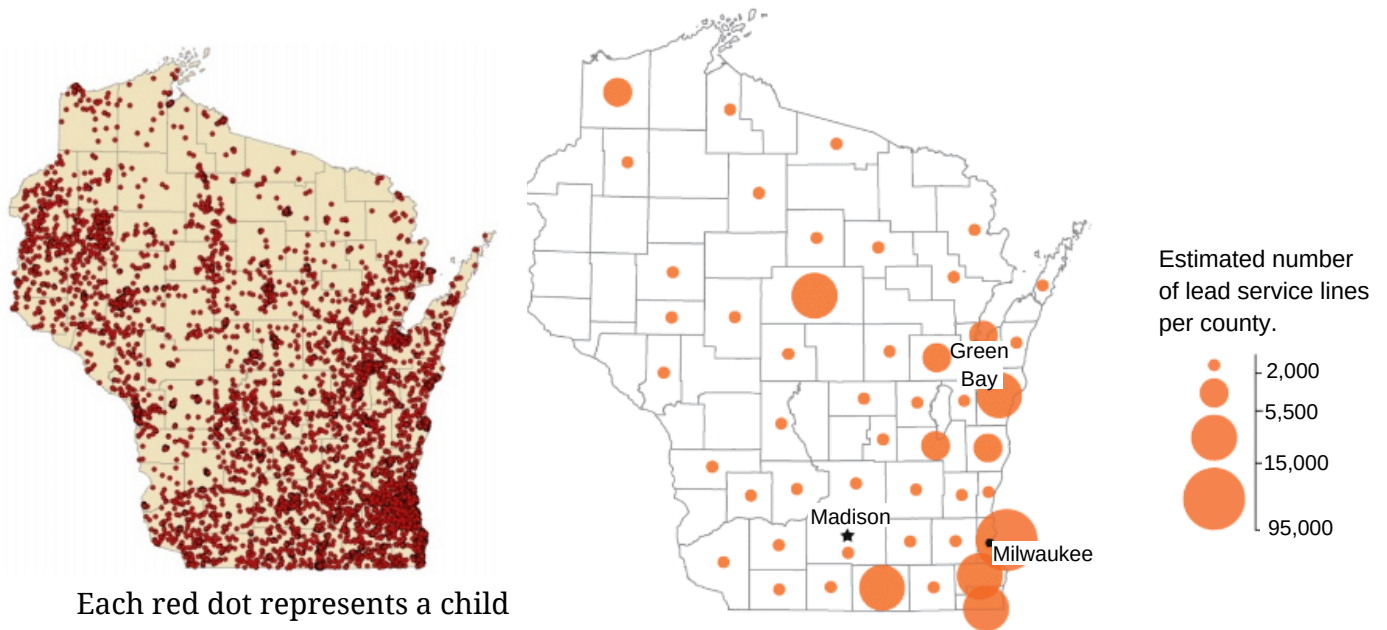
**Keep Asian Carp Out of Wisconsin Waterways:** Call on the WI Department of Natural Resources and the federal government to increase their efforts to stop the destructive advance of the Asian carp through Wisconsin.

**Mining Reform:** Monitor mining reform legislation, support provisions that restore local government role, and suspend floodplain rules that would nullify flood insurance and federal disaster assistance.

**Water Management:** Support local governmental efforts to improve water management through water conservation, a balanced water budget, and enhanced groundwater recharge.

**High-Capacity Wells:** Support science-based regulation of high-capacity wells that considers the individual and cumulative effects of high-capacity irrigation wells on nearby waterbodies.

**Lead Pollution:** Support statewide/Utility User funding to help local governments mitigate lead contamination in drinking water.



Each red dot represents a child under 6 years of age that had lead poisoning from 1996-2016.

Source: Wisconsin Department of Health Services

Source: Wisconsin Center For Investigative Journalism

**Public Trust Doctrine:** Oppose legislation that erodes the Public Trust Doctrine and DNR's ability to regulate navigable waters and wetlands.

# Natural Resources Conservation

**Stewardship Fund:** Support ongoing appropriations for the state Stewardship Fund that are strong and annually adjusted for inflation. Eliminate Stewardship Fund requirements for hunting and trapping.

**State Urban Forestry Grants:** Allow towns, counties, and non-profits to access both the federal and state funds in the Urban Forestry Grant Program.

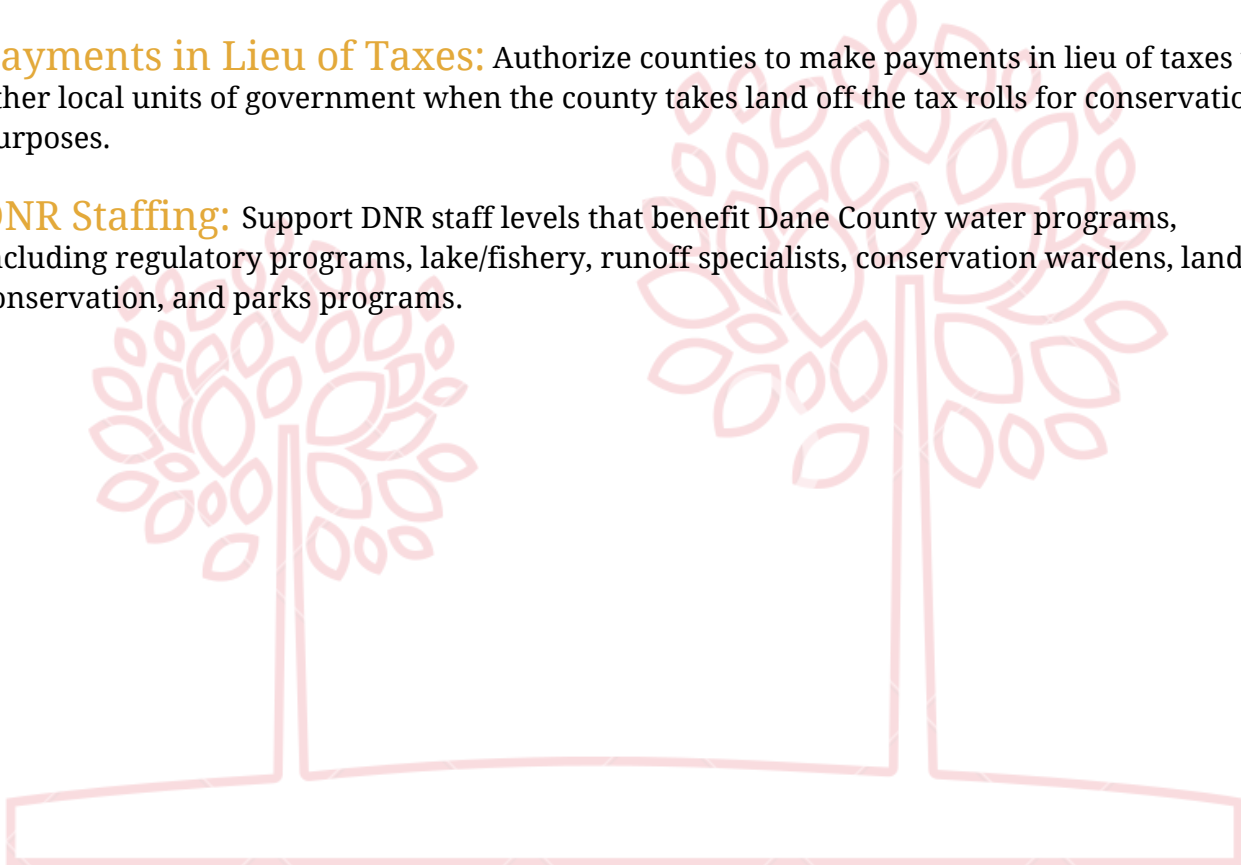
Examples of grants from 2019:

Kewaskum, Village of •	\$5,000.00	Emerald Ash Borer Management Plan
Lakeshore Natural Resource Partnership	\$11,000.00	Updating Inventories and Plans for Municipalities in Sheboygan County
Ozaukee County	\$25,000.00	Ecological Planning and Management in Five Unique Ozaukee County Park Properties
Palmyra, Town of •	\$5,000.00	Ash Tree Abatement Program 2019
Riveredge Nature Center ^	\$23,600.00	Scientist in Residence Initiative - Riveredge Nature Center
Watertown, City of	\$25,000.00	Private & Municipal Tree Replacement
West Bend, City of	\$25,000.00	City of West Bend 2019 EAB Response & Free Street Tree Program

*Source: WI Department of Natural Resources*

**Payments in Lieu of Taxes:** Authorize counties to make payments in lieu of taxes to other local units of government when the county takes land off the tax rolls for conservation purposes.

**DNR Staffing:** Support DNR staff levels that benefit Dane County water programs, including regulatory programs, lake/fishery, runoff specialists, conservation wardens, land conservation, and parks programs.



# Sustainable Agricultural Practices

**State Commercial Building Code:** Support the exemption from the state Commercial Building Code of farm buildings used for agricultural purposes or horse boarding/stabling facilities.

**Funding for Soil & Water Resource Management Program:** Support increased county conservation staff funding for implementation of the county’s land and water resource management plan. Increase available cost share funding to support agricultural producers with implementation of conservation practices to grow the state’s agricultural economy as well as protect soil and water resources.

**Foreign Interests in Farmland:** Oppose legislation that removes limits on foreign ownership of Wisconsin agricultural land.

Owner	County	State	Country	Acres	Current Value
	Dane	Wisconsin	SWITZERLAND	152	\$385,000.00
FME CORP.	Dane	Wisconsin	BAHAMAS	415	\$747,000.00
SEMINIS, INC.	Dane	Wisconsin	GERMANY	74	\$200,000.00

*Source: Midwest Center for Investigative Reporting*

**Non-Therapeutic Use of Antibiotics in Livestock:** Support statewide ban on non-therapeutic use of antibiotics in livestock production/agriculture.

“Research Shows Overuse Of Antibiotics In Meat Could Lead Medicine To Be Less Effective In Humans”

*Credit: Shamane Mills for WPR Source: Consumer Reports*



# Climate Change: Mitigation, Adaptation & Resilience

---

**Renewable Energy Production:** Support legislation and statewide funding in the form of grants and incentives to encourage the increased use and viability of waste-to-energy and renewable energy sources such as wind, solar, and biomass.

**Green Jobs Economic Development:** Support statewide funding in the form of grants or incentives, for counties to develop, create, and attract green job opportunities with green companies or industries.

**Renewable Energy:** Support legislation that encourages waste-to-energy and renewable energy sources as viable energy sources for utilities and consumers.

**Clean Energy Choice:** Support legislation to increase affordability/sustainability of renewable energy in Wisconsin.

**Divestment from Fossil Fuels:** Support zero investments in fossil fuel companies for all local governments and state institutions.

**Balanced and Fair Partnership Between Digesters, Gas Recovery Programs, and Utility Companies:** Create a statewide reimbursement competitive grant program to enhance and fund bio-energy projects.

**Power Plants:** Support efforts to clean up dirty power plants.

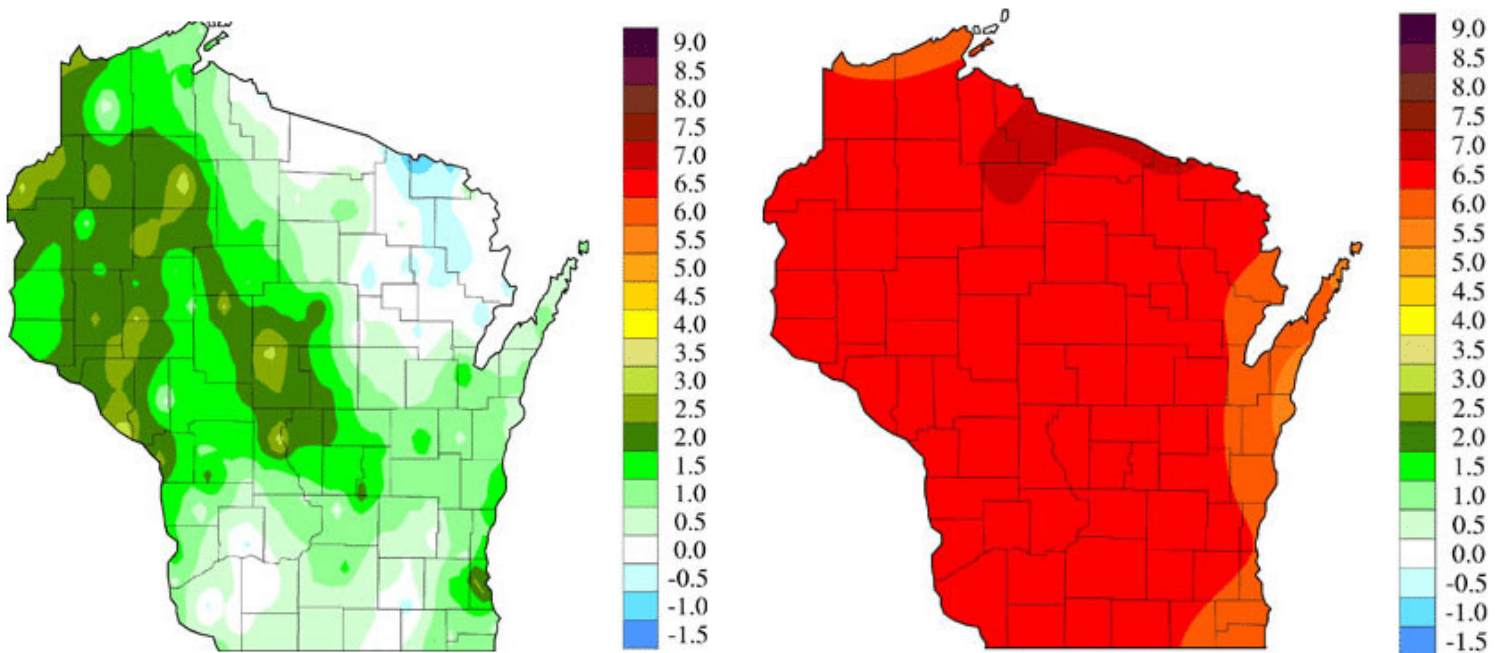
**Energy Efficiency:** Work to defend the statewide Focus on Energy Program and actively support efforts to increase the funding and customer access to that program. Support efforts to return local control to local units of government for energy related decision making such as establishing commercial building codes. Restore school districts' energy efficiency exemption to the revenue limit.

**Diesel Idling Regulations:** Support statewide implementation of diesel idling regulations for trucks, buses, and other diesel engines.



**Reduce Fine Particle Pollution:** Target fine particle pollution non-attainment areas by providing increased funding and new incentives for fine particle emission reduction programs, including programs that reduce emissions from transportation sources and point sources through the increased use of alternative fuels, renewable energy sources, and energy efficiency improvements.

**Climate Change:** Support legislative efforts to address climate change. Enhance county authority and funding for county-level action planning, mitigation, adaptation, and resilience around the impacts of climate change, including climate change influenced by human activity.



**Change in Annual Average Temperature (°F) from 1950 to 2006**

Except for northeastern Wisconsin, most of Wisconsin has warmed since 1950. Averaged across the state, the warming has been +1.1°F, with a peak warming of 2-2.5°F across northwest Wisconsin. Wisconsin is becoming "less cold", with the greatest warming during winter-spring and nighttime temperatures increasing more than daytime temperatures.

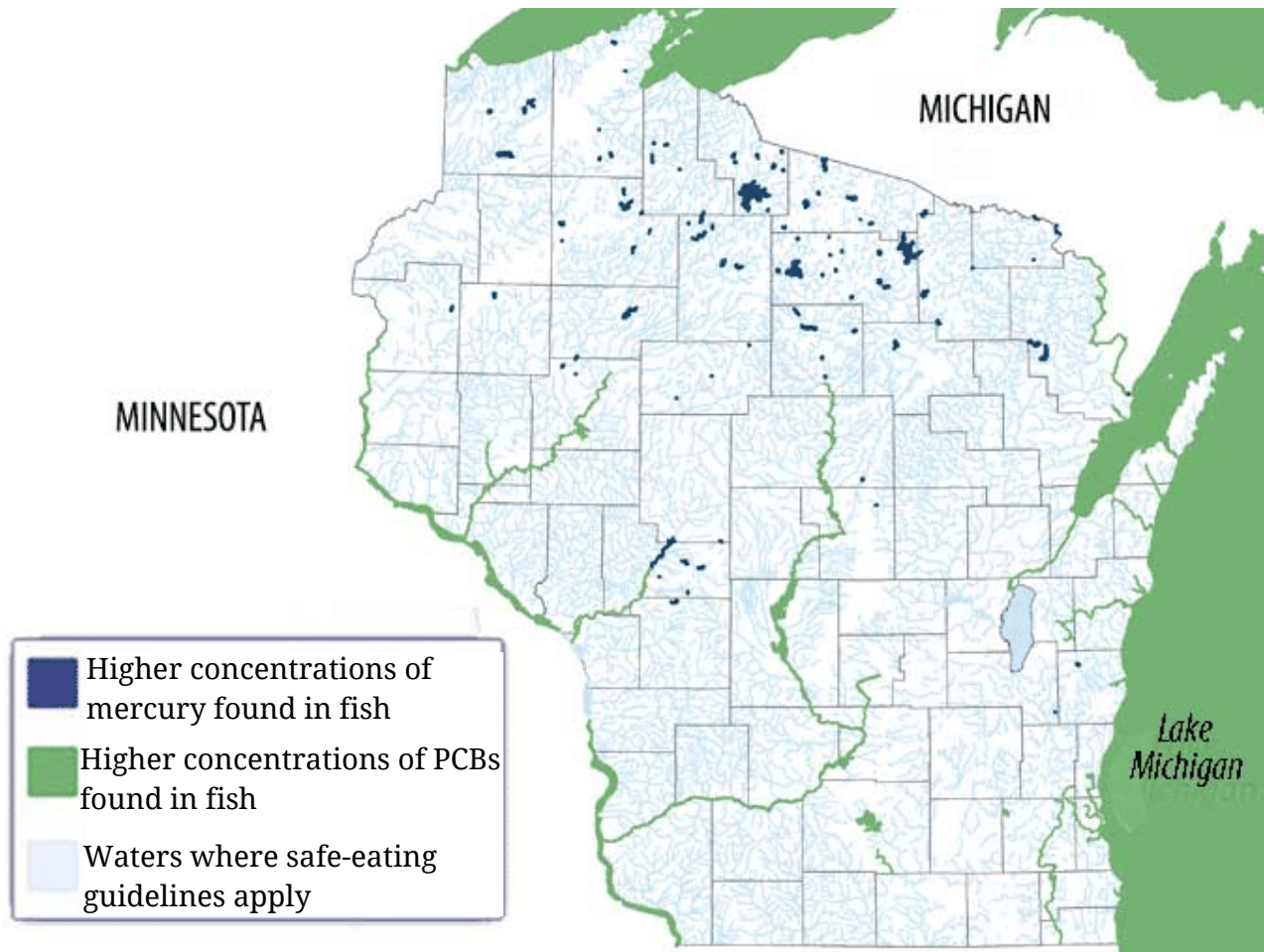
**Projected Change in Annual Average Temperature (°F) from 1980 to 2055**

Wisconsin is projected to warm by 4-9°F by the middle of this century, based on one emission scenario. Northern Wisconsin is projected to warm the most, while the least warming is expected along Lake Michigan. The mean projected warming rate is about four times greater than what has been observed since 1950.

*Source: Wisconsin Initiative on Climate Change Impacts*

# Environmental Health

**Mercury Rules:** Support changes to the mercury rules to achieve a 90% reduction per DNR rule.



Source: 2016, WI Department of Natural Resources

**Perflourinated Compounds:** Support adopting a state-directed threshold standard of PFAS, PFOA, and PFOS and the state exploring and identifying contamination and remediation options, including the associated costs and benefits.

**Lead Pollution:** Support statewide/Utility User funding to help local governments mitigate lead contamination in drinking water. Support building statewide awareness and educational efforts related to the use of lead shot and tackle for hunting and fishing.

# Access to High Quality Health Care

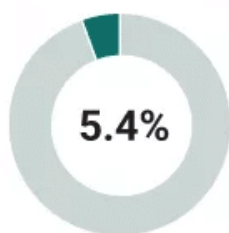
**Dental Access:** Support policies and/or legislation that would ensure access to dental care for all residents including those on Medical Assistance.

**Medicaid Expansion:** Support implementation of the Medicaid expansion under the federal Affordable Care Act (ACA). Accept available federal funds for BadgerCare to ensure that thousands of Wisconsin citizens have access to quality and affordable health coverage.

## The Uninsured Rate Rose Slightly in 2017

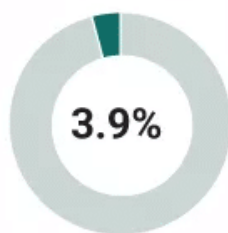
Percentage of people without insurance in Wisconsin.

All uninsured people in Wisconsin



309,000 people

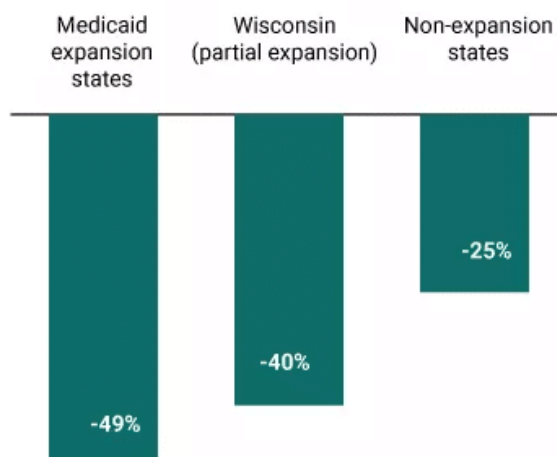
Uninsured children in Wisconsin



53,000 children

## States that Expanded Medicaid Have Bigger Declines in the Number of People who Lack Health Insurance

Percent change in number of uninsured, 2013 to 2017.



*Credit: American Community Survey Source: Kids Forward*

**Key Funding Streams:** Support Cost of Living Allowance (COLA) increases in key funding areas from the state including Youth Aids, Basic Community Aids, Children and Families Allocation, Aging and Disability Resource Centers, Income Maintenance, Children's Community Options Program, and Children's Long Term Support Program.

# Economic Assistance

**Income Maintenance Programs:** Support funding levels and legislation that provide sufficient resources to administer non-cash benefit programs such as Food Stamps, Medical Assistance, and Childcare and issue benefits to all eligible people. Oppose changes to the eligibility/enrollment process and services funded under Medicaid and Income Maintenance.

**W-2 Funding:** Support funding to pay all W-2 cash benefits and administrative expenses.

**Childcare:** Support sufficient funding for childcare. Expand eligibility to include childcare support for low-income individuals pursuing higher education leading to employment.

**Property Tax Exemptions Low Income Housing:** Clarify 70.11 Wis. Stats. to define “maintenance” as “repair and maintenance of property, capital replacements, insurance premiums, project management, debt retirement, project-related reserves, general administrative expenses, resident services, utilities, financing costs, preservation expenses, and similar project-related expenses.”

**Centralization of Economic Support Programs:** Oppose initiatives to remove income maintenance administration from counties and create a centralized income maintenance unit.

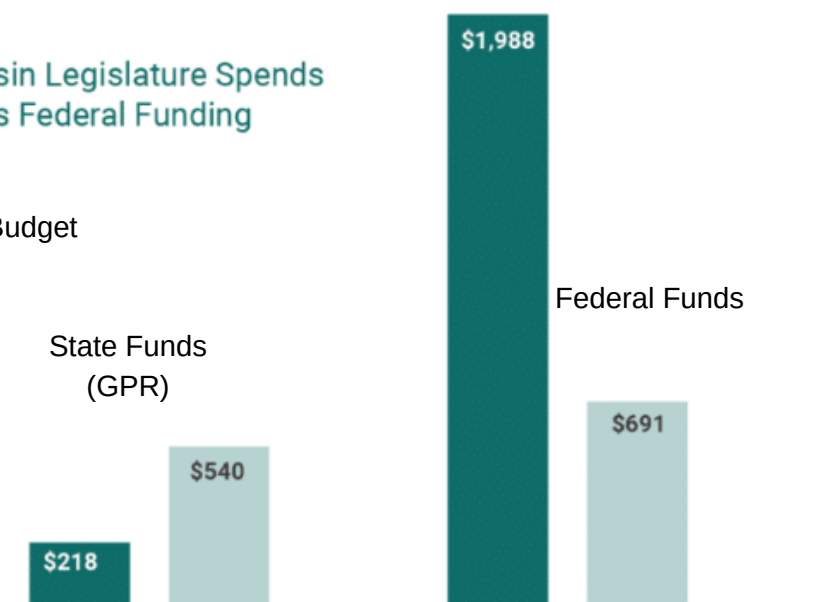
**Medicaid Funding:** Support enabling counties to accept/administer Medicaid funding at the county level.

**The Medicaid Budget Passed by Wisconsin Legislature Spends More State Dollars and Brings in Far Less Federal Funding**  
Increased funding in Millions of \$s

■ Governor's Budget    ■ Legislature's Budget

*\*For a more accurate comparison, the amounts for the Governor's Budget reflect the current cost estimates of Medicaid, BadgerCare and SeniorCare*

Source: Kids Forward



**Drug Testing:** Oppose legislation that would enact drug testing as a requirement for public benefits. Also oppose drug testing of youth in our public schools.

# Services for Older Adults, the Developmentally/Physically Disabled, and Mentally Ill

---

**Birth to Three:** Support additional financial support from the state for this program. Support a modification of State Statutes to require health insurers to make third party payments to defray the cost of Birth to Three care for families that have private health insurance policies.

**Community Support Program (CSP):** Continue program. Have additional state funding to help reduce county costs and serve those who can benefit from the program.

**RSVP Services:** Support increased funding for the RSVP Program.

**Seniorcare and BadgerCare:** Maintain Seniorcare and BadgerCare continuing programs.

**Handicap Access:** Support “visit ability” legislation to allow handicap access devices in new homes or eliminate barriers in older homes.

**Long Term Care Reform:** Plans developed by the state in the area of long term care need to protect quality and availability of services to consumers and maintain control by the county of programs or relieve the county of financial aid and/or legal obligations for the programs and participants if the county is not involved with these programs in the future. The required county contribution towards LTC should be equitably negotiated. Support ongoing funding of ADRCs. Amend Chapter 55 to delineate state and county responsibilities.

**Employment Services for Older Adults:** Extend the use of state and county funds to encourage the business community and technical colleges to create and support retraining and placement of older adults entering/re-entering employment, especially those lacking English proficiency.

**Family Caregivers:** Provide financial support and tax credits to family caregivers.

**Dementia Patient Rights:** Oppose involuntary psychotropic drug administration in Chapters 51 and 55.

**Comprehensive Community Services (CCS):** Support continued full funding of the state match.

**InvestaCare (Long Term Care Investment Fund):** Support legislation to establish a long term care investment savings program for individuals 18 years and older to meet future long term care needs through financial contributions.

**Family Care/IRIS:** Oppose changes that weaken the Family Care, IRIS, and Partnership programs or privatize Aging & Disability Resource Centers (ADRCs).

**Mental Health and Drug Addiction Treatment:** Urge the state of Wisconsin to require increased insurance coverage and MA reimbursement rates in addition to adequate and sustainable statewide funding for mental health services and drug addiction treatment programs.

**Winnebago Mental Health Transfers:** Urge DHS to rescind its requirement to transfer detained mental health patients to Winnebago Mental Health Institute instead of Mendota.

**Non-Emergency Medical Transportation:** Currently Medical Transportation Management Inc. (MTM) is contracted by the State of Wisconsin to provide rides for Medicaid-eligible individuals to gain access to medical appointments. Contract provisions are skewed to reward MTM for denying rides instead of providing rides. Ongoing complaints about the quality of service suggest little accountability or oversight, creating greater problems for the “transportation disadvantaged.” Support entities or other actions that will hold MTM accountable, improve oversight of the program, ensure quality, consistent services, resolve complaints and provide incentives for giving, rather than denying, rides.

**Prevention Funding:** Support initiatives that provide additional funds for primary prevention and enforcement programs related to elder abuse and neglect.

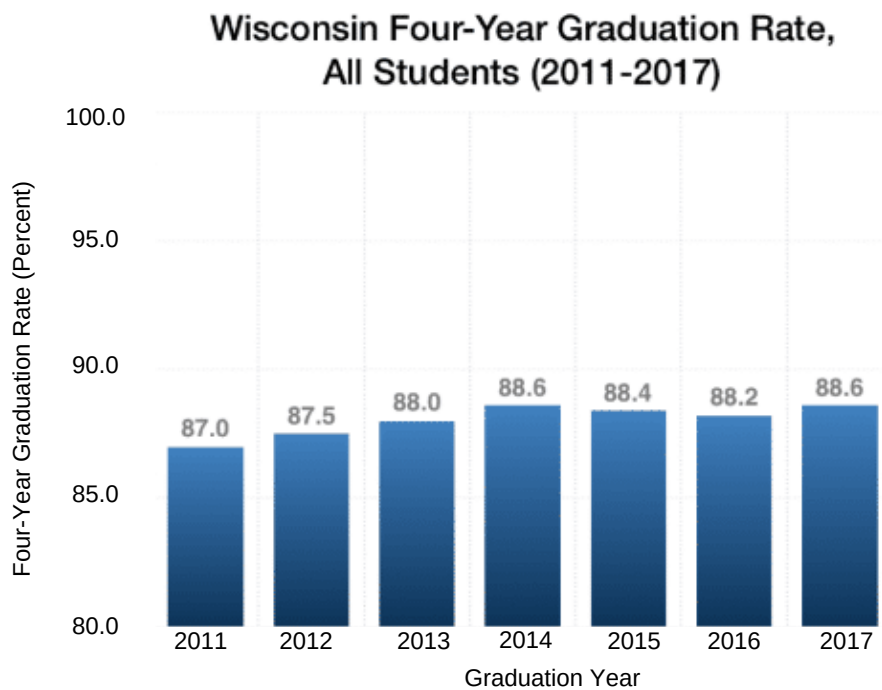
**IMD Exclusion:** Support the state in its efforts to change the “IMD Exclusion” that ultimately requires counties to fund institutional stays for patients covered by Medicaid.

**Funding of Programs and Services:** Oppose decreases and support increases of quality programs and services affecting older adults in proportion to the population growth. Oppose funding allocation and distribution methods that disadvantage Dane County.

**Educational and Licensure Requirements:** Oppose the reduction of educational and licensure requirements for health care professionals.

# Services for Children, Youth, and Families

**Career Development for Youth:** Support funding to provide educational, work skill development, transportation, and mentoring services for youth or young adults who are at risk of dropping out, have dropped out of high school, or who are unemployed post high school and lack the knowledge and skills necessary to secure and maintain gainful employment.



Source: Wisconsin DPI

**Early Childhood Initiative:** Support legislation to continue funding for the Early Childhood Initiative programs.

**Apprenticeship/Internships:** Provide incentives for the business community and technical college system to create and support apprenticeship/internship opportunities for young adults. Expedite entry and graduation from the programs to meet increasing demands to fill vacancies created by an aging workforce.

**Prevention Funding:** Support initiatives that provide additional funds for primary prevention programs including delinquency and child abuse/neglect.

**Relative Caregivers:** Support legislation/policies that provide additional State support to relatives who take care of non-custodial children.

**Kinship Care:** Support funding to meet needs of all that are eligible.

**Wisconsin Medicaid Cost Reporting (WIMCR):** Eliminate WIMCR program or fully reimburse counties for the revenues they would have received under the Community Services Deficit Reduction Benefit (CSDRB) and communities impacted by the creation of WIMCR.

**Family Child Care:** Support legislation to extend the state rules governing foster care background checks to family day care providers.

**At-Risk Youth Report to School Board:** Develop a program for newly released at-risk students to interact with/give progress reports to school boards.

**Law Enforcement Role in Child Abuse and Neglect:** Oppose legislation that usurps the authority of county Child Protective Services (CPS) by reporting all child abuse and neglect cases to law enforcement in lieu of CPS, increases penalties, and changes the neglect definition to target low income and marginalized communities.

**Child Support:** Request the Legislature to designate additional state monies to the Wisconsin County Child Support Program to maintain the current high level of service.



# Youth Justice

**Youth Justice:** Support continued funding for early intervention and intensive treatment programs. Support continued improvements to the youth justice and juvenile corrections systems and ensure Dane County is able to successfully operate a secured residential care center for children and youth.

**Youth Aids:** Support legislation to increase state funding for out-of-home care costs for youth offenders now paid for by Dane County. Limit increases in state rates for out of 270 home placements for youth (including corrections, child caring institutions and residential care facilities) to no more than the increase in Youth Aids.

**17 Year Olds:** Remove 17-year-olds from the adult correctional system and return them to Juvenile Courts and Juvenile Corrections.

**Countywide Youth Collaboration:** Create two pilot programs funded at \$100,000 to foster countywide collaborative actions with School Districts, Law Enforcement Task Forces (drug, gang...), County Human Services, Sheriff, District Attorney, Community Youth Service Organizations, and target services for all students.

**Youth Programs:** Support continuation and expansion of programs focusing on prevention of delinquency, alcohol and other drug use, child abuse and neglect, and domestic violence. Support increased funding and support for youth after school programs, especially at the middle school level.

**Youth Courts:** Support and fund Youth Courts in Wisconsin High Schools.

“ A jury of youth works with a student who has been in trouble to find positive solutions in addressing negative youth behavior. By using this justice program and offering community support, young people hold their peers accountable. ”

*Source: Community Shares of Wisconsin*

**Group Homes:** Support efforts to reassess the maximum daily rate that group homes receive.

# Public Health Services

**Response to Local Public Health Emergencies:** Support legislation that recognizes the critical role of local Public Health Departments in responding to public health emergencies and provides adequate funding to respond to all threats to public health.

**Public Health Prevention:** Support initiatives that maintain effective public health prevention services, health promotion efforts, health and racial equity, and conditions that lead to optimal health outcomes.

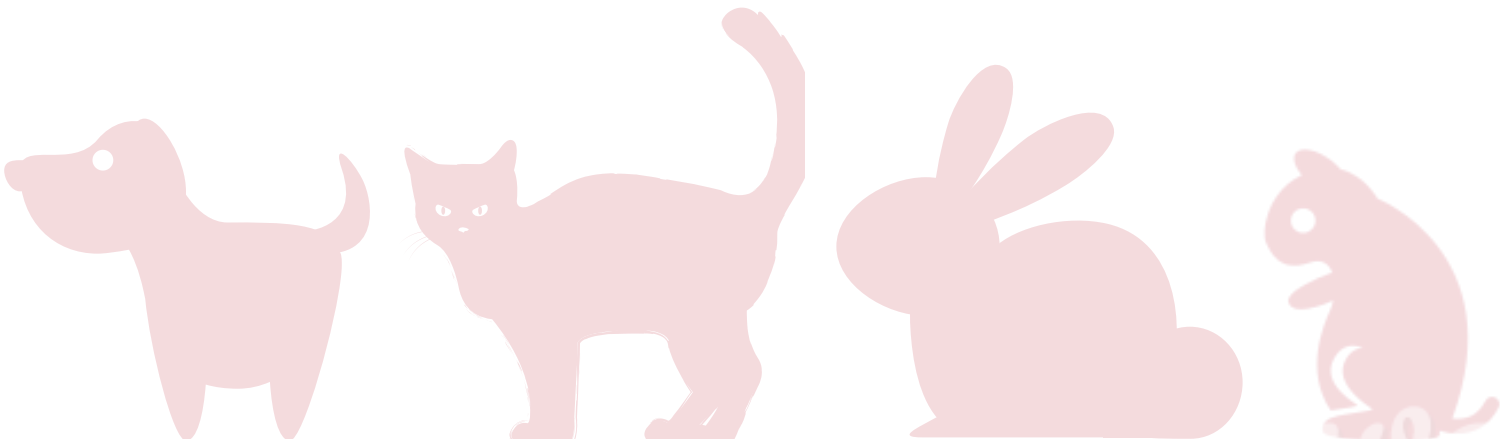
**Medical Marijuana:** Support legislation allowing residents with debilitating medical conditions to acquire and possess marijuana for medical purposes if supported by their physician.

**Women's Health Care:** Repeal all state laws that prohibit women from having access to safe and legal abortions, that don't protect women's health, and don't ensure a woman's dignity, equality, and autonomy.

**Support Wisconsin Well Woman Program:** The Wisconsin Well Women Program pays for preventive health screening services (Mammograms, Pap Smears.....) for women with little or no health insurance coverage. Support maintaining the program and oppose any cuts or elimination.

**Dangerous Animals and Vicious Dog Ordinance:** Amend state law to allow counties to enact stricter ordinances to regulate dangerous animals and vicious dogs having countywide applicability.

**Reduce Holding Period for Unclaimed Animals from 7 to 3 Days:** Change state law to reduce the unclaimed animal holding period from 7 to 3 days. This would shorten the County/Humane Society holding contract and allow the Dane County Humane Society to place an animal up for adoption much sooner.

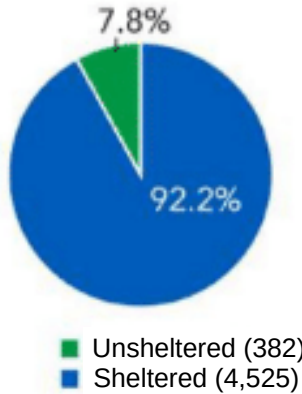


# Housing

**Homeless Services:** Provide additional State funding for services to assist individuals, unaccompanied youth, and families who are homeless.

**8** in every **10,000** people were experiencing homelessness

Source: HUD's Annual Homeless Assessment Report (2018)



## Estimates of Homelessness

<b>2,740</b>	individuals
<b>2,167</b>	people in families with children
<b>246</b>	unaccompanied homeless youth
<b>332</b>	veterans
<b>446</b>	chronically homeless individuals

**Manufactured Housing:** Support legislation to amend state statutes to require adequate notice to residents when mobile home parks are closing, require storm cellars/secure areas in manufactured housing communities, encourage WHEDA to provide funding/financing for the purchase of housing on leased land, remove any barriers to long term leases, allow the purchase of communities by residents, and the development of co-operative housing for manufactured housing communities.

**Restrictions on Local Fair Housing Ordinances:** Oppose legislation that impinges on the rights of tenants by allowing landlords to discriminate based on a tenant's income, occupation, rental history, credit information, arrest/conviction history, and Social Security number.

**Landlord Regulation:** Repeal 2011 WI Act 108, which prohibits local government ordinances that place limits or requirements on landlords (Fair Housing Ordinance). Repeal 2011 WI Act 143, which prohibits a local government from imposing a moratorium on eviction actions and amends/creates new provisions that benefit landlords including but not limited to allowing: landlord discretion in disposing/storing of medical/personal items; landlords to withhold a tenant's security deposit or portion of for damages, unpaid rent/utility bills; and severability of rental agreements. Repeal 2011- 2012 budget bill provision, which deletes landlord foreclosure notice. Repeal 2013 WI Act 76 (Prohibit Local Landlord Ordinances).

**Affordable Housing Trust Fund:** Support enabling legislation to allow Dane County to create an Affordable Housing Trust Fund.

**Tenants' Rights:** Oppose legislation that prohibits local governments from enacting/enforcing ordinances that regulate landlord/tenant relations, enhance fairness in landlord/tenant relations, foster responsible property ownership, and protect the safety & stability of neighborhoods.

# Veterans Services

**Armed Forces:** Support the Dane County soldiers who are presently serving. Support protecting families and jobs rather than utilizing precious resources and funds to wage a war.

**VFW Halls:** Support a property tax exemption for chartered veterans' organizations.

**Property Tax Credit:** Drop the disability rating from 100% to 30% or greater.

**Trust Fund:** Support an increase from state GPR to help stabilize the Trust Fund so veterans will no longer pay for their own benefits and programs. The Trust Fund is financed through veteran programs such as personal and home loans.

**Wisconsin GI Bill:** Fully fund the Wisconsin GI Bill without any limitations on eligibility.

**State Funding for the Veterans Trust Fund:** Support increased funding in the state budget bill to insure solvency of the Veterans Trust Fund including but not limited to, the exploration of permanent state funding for the WI Dept. of Veteran Affairs and the veteran programs/benefits that the Department oversees.

**Ending Veteran Homelessness:** Support ending veteran homelessness by maximizing state and federal resources and streamlining local housing processes.

**Mass Transit for Disabled Veterans:** Support fully funding bus passes and other mass transit costs for all service-connected disabled veterans in all Wisconsin locations and transit programs.

**County Veterans Services Offices:** Oppose legislation that cuts/restructures CVSO funding, reduces veteran services or weakens the offices by regionalization.

**Veterans Administration:** Support and recognize the significance of the William S. Middleton Memorial Veterans Administration Hospital and area clinics in the lives of veterans and in the Dane County community and oppose the privatization of services that the Veterans Administration provides to millions of veterans nationally and thousands of Dane County residents jeopardizing their care.

# County Personnel, Finance, and Governance

**State Mandates:** Oppose any legislation or rule that requires counties to provide a service or administer a program without adequate and ongoing funding. Support creation of a Joint Survey Committee on Local Mandates. Support legislation to allow waivers from state mandates. Support requiring the state to perform a biennial review of all mandated programs to determine continued need for the programs and annually review all mandated programs funded at 50% or less.

**Fees/Licenses:** Support state-set fees collected by counties to fairly cover administrative costs.

**Libraries:** Enforce compliance with WI Stats. 43.24(6), which require state funding for public library systems at 13% of local library expenditures.

**Association Memberships:** Support requiring a simple majority vote of the County Board of Supervisors to purchase membership in an association of county boards.

**Room Tax:** Amend the room tax statutes to include counties.

**Alliant Energy Center:** Support state funding for capital projects on the Alliant Energy Center campus and support authorizing the creation of a taxing authority, known as the Alliant Energy Center District, to be used to repay bonds for the construction, maintenance, and operations of campus facilities.

**Property Tax Freeze:** Oppose any efforts to limit or prohibit local governments from increasing their expenditures or revenues.

**Buy Local:** Provide and maintain state funding to create incentives for businesses and all levels of government to buy local produce and products. Oppose the practice of contracting State of Wisconsin government functions or services to out-of-state companies/operations.

**Reverse Marriage Ban:** Support a constitutional amendment to delete the marriage ban amendment adopted in the Fall 2006 General Election.

**Domestic Partnership Benefits:** Support restoring local governments' ability to provide domestic partner benefits.

**State Contracts:** Require the state to award contracts to vendors that extend spousal benefits to include employees in domestic partner relationships.

**Grant Program Continuity:** Require that when the state awards contracts or otherwise funds a project, the state should require sustainability as one criterion in the decision making or contract selection process.

**Restore Impact Fee Authority:** Restore counties to the governmental entities that are authorized to levy impact fees.

**Fair and Equitable Taxation:** Support fair and equitable taxation without harming county revenue.

**Local Government Control:** Oppose any legislation that limits or deletes local government control including opposition to levy limits and support for county home rule authority.

**Highway Workers Safety:** Earmark a portion of every state construction/maintenance contract to fund increased local law enforcement in construction/maintenance zones. Support innovative approaches to improve work zone safety.

**Prevailing Wage:** Restore the prevailing wage requirement for public works and other projects. The prevailing wage guarantees fair bids, quality work and middle-class wages for skilled workers in Dane County.

**Fair Motorboat Gas Tax Allocation:** Support legislation to fairly allocate motorboat fuel tax through a more equitable distribution formula.

**Comprehensive School Funding Reform:** Support changes in the school aid formula to align revenues with educational costs. Distribute resources in accordance with the diverse needs of students and districts to ensure every student receives a quality education. Support moving school funding away from reliance on property taxes.

**Changes to Wisconsin Redistricting Statutes:** Oppose changes to the redistricting process that allow the Wisconsin Legislature to develop a map of Congressional, Senate, and Assembly districts prior to local government input regarding ward boundaries.

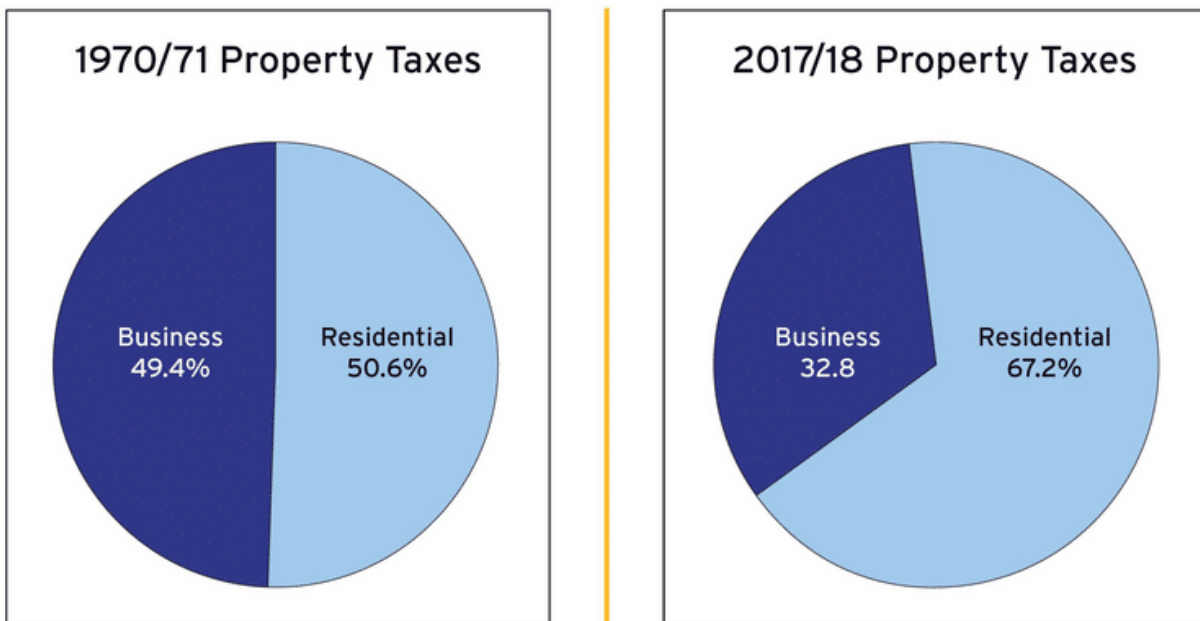
**Oppose State-Imposed County Board Restructuring:** Oppose legislation that impedes a County Board from governing, budgeting, and hiring staff.

**Collective Bargaining:** Support legislation allowing local government the option to engage in collective bargaining with public sector employees. Dane County is committed to a fair and respectful bargaining process and to bargaining in good faith with our employees, even if state statutes no longer require collective bargaining between Dane County and its employees. Oppose attacks on workers' rights.

**Balance of Power:** Oppose efforts to alter the authority and/or responsibilities among county boards, county executives or administrators, and constitutional officers and upset the balance of power in county government across Wisconsin.

**Dark Store Loophole:** Oppose the Dark Store Loophole by clarifying that leases are appropriately factored into the valuation of leased properties and that when using the comparable sale method of valuation, assessors shall consider as comparable only those sales within the same market segment exhibiting a similar highest and best use rather than similarly sized but vacant properties in abandoned locations.

## The Big Shift to Homeowners



**Nonpartisan Redistricting:** Dane County Board of Supervisors supports the creation of an independent non-partisan process for the preparation of legislative and congressional district lines.

**Project Labor Agreements:** Support the restoration of local governments' ability to enter into Project Labor Agreements.

# Public Safety and Emergency Management

**EMS Services:** Support legislation that encourages financial support of volunteers in emergency medical services and that addresses liability issues and professional standards. Support state reimbursement for radio frequency and upgrade requirements.

**Communications Surcharge for 911 Systems:** Support legislation to redirect some of the Police and Fire Protection Fee surcharge to 911 Centers.

**First Responder Training:** Require training for first responders on appropriate procedures for identifying, assisting, and interacting with older adults as well as other adults who may have complications from abuse, dementia, mental health or other disorders.

**Open Records Law:** Support updating the open records law to cover all county costs for new and emerging labor-intensive records requests and associated costs including redaction.

**Criminal Background Check:** Support provision of additional funds to the Department of Justice to enable conducting of uniform criminal background checks of to-be-hired direct care workers by public non-profit agencies.

**Multi-line Telephone System (MLTS) Calls to 911:** Support legislation requiring owners/operators of these systems to deliver Wisconsin 9-1-1 Centers precise location information instead of merely the “headquarters office” location and call-back numbers now delivered when callers from their system dial 9-1-1 seeking aid.

**Support Gun Control:** Ban habitual criminals from obtaining concealed carry permits, make the purchase of a firearm for somebody who is prohibited from possessing a firearm a felony, make the possession of a concealed firearm by those prohibited under Wisconsin law a felony, and require that private gun sales be subject to criminal background checks performed by a federally licensed gun dealer.

**Concealed Carry Weapons:** Modify the concealed carry law to prohibit concealed weapons from being carried onto the grounds, parking lots or areas associated with convention, entertainment, and sporting facilities, venues where the public assembles for tradeshow, demonstrations, conventions, consumer shows, entertainment, sporting or educational events, including zoos, convention centers, arenas, horse arenas, hockey arenas, concert and sporting venues for public assembly events, including when those facilities are used for private events, institutions of higher learning, public schools, child care facilities, community centers, health care facilities, and public mass transportation. Support setting concealed carry license fees at an amount sufficient to fund all County Sheriffs’ costs associated with administering the law.



# Criminal Justice and Corrections

---

**State Audit Probation and Parole Program:** Support reforming the probation and parole program to streamline the revocation process in order to reduce days in jail.

**Prisoner Re-entry:** Adequately fund prisoner community re-entry programs to increase success and effectiveness.

**Close Public Defender Eligibility Gap:** Support changing Public Defender eligibility level to the same level as eligibility for appointed counsel to eliminate the gap that currently requires the court to appoint counsel at county expense. Increase state funding to cover counties' costs for court-appointed attorneys. Increase public defender pay to at least \$70 per hour.

**Minority Outreach:** Support state-sponsored outreach to communities about available support services.

**County Jail:** Support full state funding for probation and parole holds, more funding for incarceration alternatives, and support Justice Impact Statements.

**Treatment Alternatives and Diversion:** Support enhancements to public safety and reduce unnecessary corrections related expenditures by (a) Increasing funding for the treatment Alternatives and Diversion (TAD) Grant Program by \$15 million annually; (b) Changing the TAD statute so that people who were once convicted of a violent crime can be eligible if the new crime is non-violent in nature; (c) Changing the statute so that people with a mental health issue (and not a co-occurring addiction issue) can be eligible; and (d) Focusing the growth in TAD in these three main areas: (1) Expansion of OWI Courts, SSTOP, and other programs that address drunk driving; (2) Expansion of drug treatment programs that can help deal with the growing heroin problem as well as the lingering issues with methamphetamine, crack, , and other drugs; and (3) Expansion of funding for treatment alternatives that are targeted to the communities that have the state's highest incarceration rates.

**Court Interpreters:** Support appointing court interpreters to all cases regardless of indigency and support an increase in state funding for reimbursement to counties for interpreter services.

**Wisconsin Community Justice Reinvestment Act:** Support creation of WCJRA to provide sentencing judges with more effective treatment options while reducing the prison population and sharing the savings with counties to fund local criminal justice/treatment programs.

**Racial Disparity Subcommittee:** Support creation of a state Criminal Justice Coordinating Council subcommittee on racial disparities within the criminal justice system.

**State Court System:** Increase state funding of the circuit court system, including court security.

**Victim-Witness Program:** Support full state funding of program costs.

**Clerk of Court Fees:** Pursue statutory changes to increase the county share of fines/forfeitures.

**License Fee:** Support \$12 for driver's license suspension if the fee is payable by the defendant.

**Domestic Violence:** Support state funding for domestic violence prevention, intervention, and prosecution, including funding for three ADA positions dedicated to domestic violence and shelter services.

**Fee Increase for Jury Trial:** Support legislation to increase the fee for a jury trial from \$6 to \$15. The funding is needed to offset increases in juror compensation.

**Prisoner Hospitalization:** Oppose any legislation that would reverse/overturn the WI Supreme Court ruling on the Meriter case. Update the statutory language regarding prisoner hospitalization.

**District Attorney Funding:** Support increased state funding for more Deputy District Attorney and Assistant District Attorney positions to meet growing caseloads.

**Mental Health Screenings:** Support and fund mental health screening and treatment for jailed inmates in county juvenile detention, shelter homes, and county jails.

**Legalize Marijuana:** Support legislation legalizing marijuana. Dane County voters approved by 76% "yes" votes and 24% "no" votes.

**Interstate Traffic Tickets:** Amend State Statutes allowing Wisconsin to join the Interstate Compact on Traffic Forfeitures to facilitate collection of out-of-state traffic violators and capture a needed revenue source for the state and county.

**Boating Laws:** Authorize the state to license, regulate, and require education/training for operation of motorized watercraft. Support legislation making fines and associated penalties for drunken boating commensurate with those for drunken driving.

**Bail and Conditions of Pretrial Release:** Support legislation that reforms bail and conditions of pretrial release, respects the constitutional rights of the accused, enhances public safety, and incorporates evidence-based strategies.

# Immigrants and Refugees

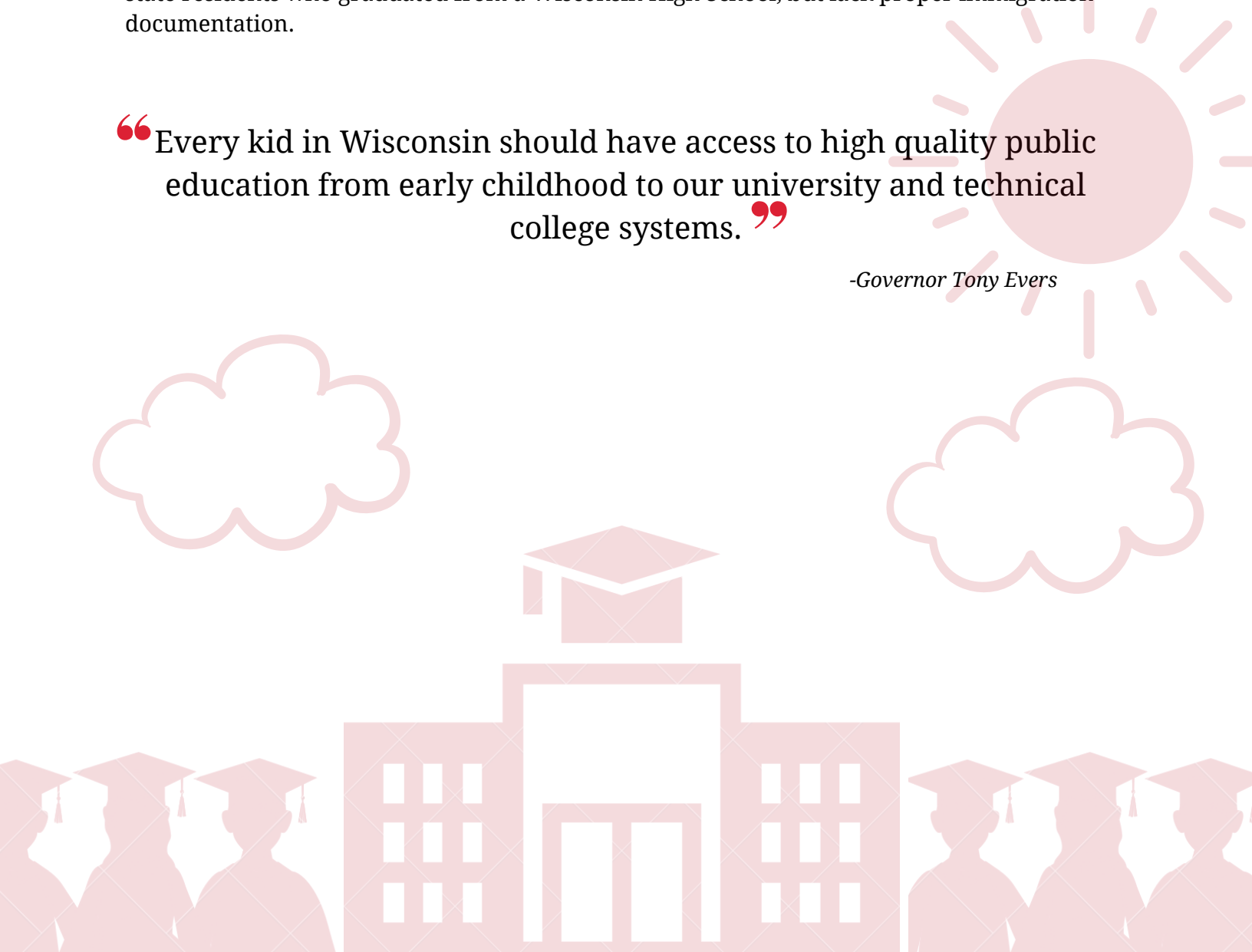
**Sanctuary Cities/Counties:** Oppose legislation that requires county workers/law enforcement to review immigration status any time an individual comes in contact with government workers. Oppose banning specified immigrants from living in communities. Urge Wisconsin to seek grants for Syrian refugee resettlement.

**Drivers' Licenses:** Support legislation that allows undocumented immigrants to obtain drivers' licenses.

**In-State Tuition for Immigrants:** Support restoring the law for in-state tuition for state residents who graduated from a Wisconsin High School, but lack proper immigration documentation.

“Every kid in Wisconsin should have access to high quality public education from early childhood to our university and technical college systems.”

*-Governor Tony Evers*



# Bicycle and Recreational Trails

---

**Transportation Aids:** Support the use of transportation aids for the construction and maintenance of bicycle trails with significant commuter traffic.

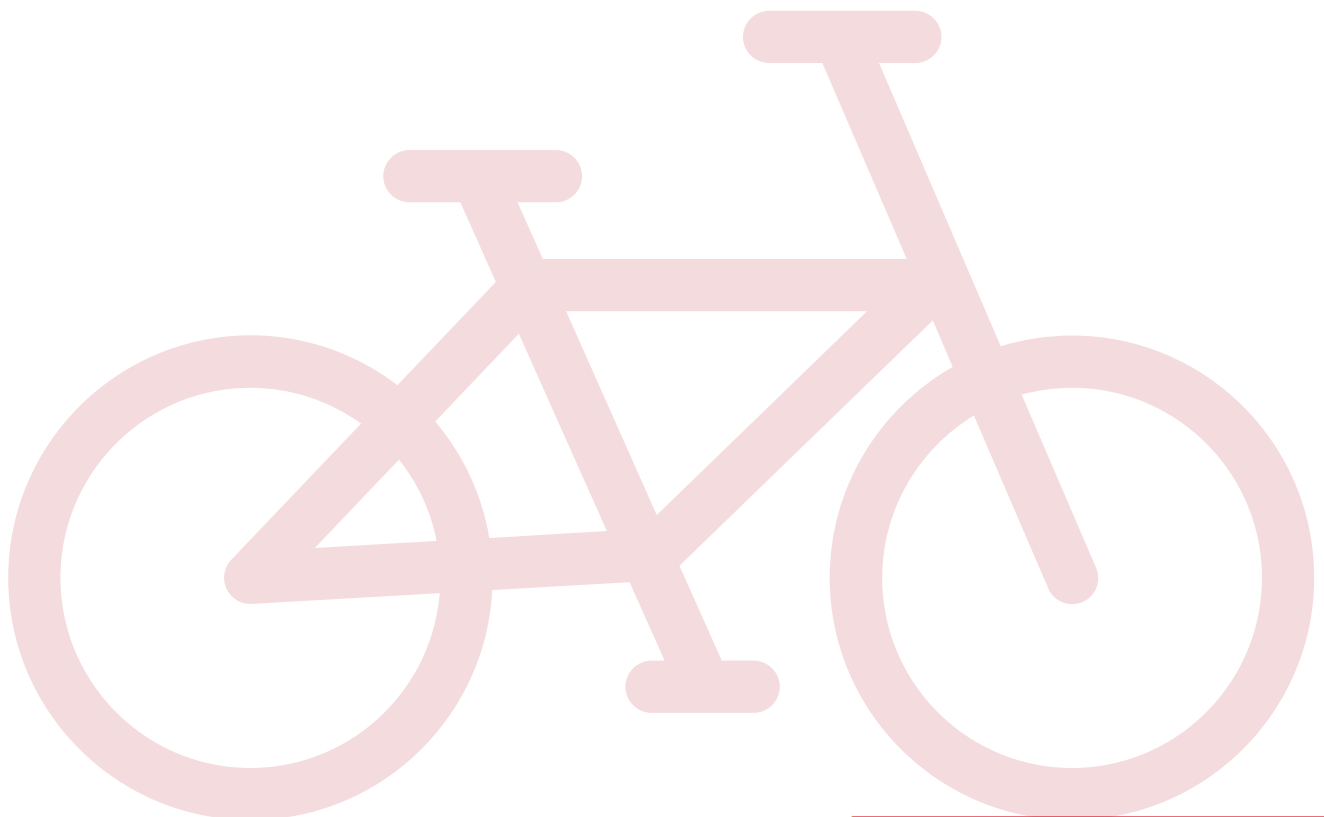
**Bike Trail Task Force:** Support the creation and development of a statewide Bike Trail Task Force.

**Commuter Transportation:** Support integrating bicycle transportation into future commuter transportation systems.

**Trail System Development:** Request DNR assistance in the development of regional trail systems.

**Eminent Domain:** Repeal Wis. Stat. 32.015, which prohibits local governments from using eminent domain for constructing bicycle and pedestrian infrastructure.

**Regional Trail System:** Request DNR assistance in development of regional trail systems.



# Mass Transit

**Regional Transit Authority:** Support legislation allowing local governments to create Regional Transit Authorities (RTA) to provide regional transit services across local government boundaries that is flexible enough to adapt to local needs and has these basic parameters: A representative RTA could be formed by one or more municipal governing bodies passing resolutions in support. A referendum would need to be adopted by a majority of voters in each municipality forming, or seeking to join the RTA. The amount of the sales tax would need to be authorized in the referendum, but could not exceed 0.5%. The governing board would be composed of elected officials, representative of the communities within the RTA area.

**Update Wisconsin 2030 State Rail Plan:** Support state and federal funding for a high speed passenger rail line connecting Madison with the Twin Cities, Milwaukee, and Chicago.

“The proposed service would address population increases and economic growth.”

*-Statement from Minnesota State Legislature*

**Airport Authority:** Oppose legislation that takes airport governance away from county government and gives it to a private/public airport authority.



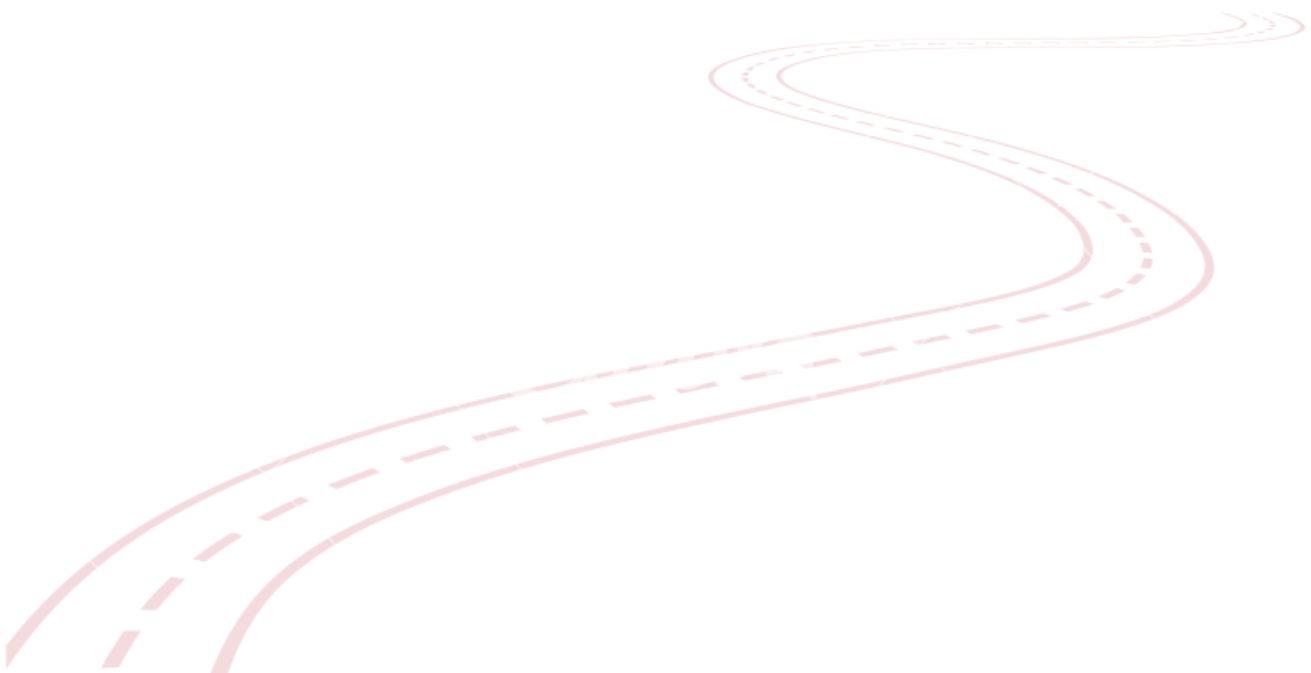
# Local Road Funding and Projects

**Local Transportation:** Support a greater share of state and federal transportation funding going toward local transportation needs and services. Funding should be increased for General Transportation Aids, State Highway Maintenance, the County Highway Improvement Program (CHIPS) and Specialized Transportation for older adults and persons with disabilities. Require “farmland mitigation” for highway improvement projects. Funding formulas that discriminate against urban counties should be revised and the local match (now 50%) for CHIPS should be decreased.

**North Mendota Parkway:** Oppose the construction of four lanes on Main Street (HWY 19) in Waunakee. Support an update of the 2003 North Mendota Parkway traffic study, and request WIDOT to consider how the proposed North Mendota Parkway, Hwy 19, CTH K, CTH M, and Hwy 13 relate to each other and Hwy 12. Support an implementation review of the “North E-Way”. Support state and federal funding for the North Mendota Parkway. Oppose an expansion to four lanes on main Street (State Highway 19) in downtown Waunakee.

**Verona Road Project:** Support mitigation measures to lessen the impact of the Verona Road construction project on surrounding neighborhoods and local businesses. Those measures include noise barriers, monitoring air quality, preservation of commercial areas, minimizing impacts on established neighborhoods, stormwater management (steer away from Dunn’s Marsh), and develop bike lanes, pedestrian/bicycle bridges, and sidewalks on frontage and neighborhood roads.

**Highway Funding:** Require WIDOT to provide more funding up front through operational reimbursement and incentivizing improvements.



# Waste and Renewables

**Recycling:** Support long-term state funding for state's recycling program. Support continued state efforts to expand markets for recycled materials. Support allowing local governments or other entities to receive more than one state grant for innovative demonstration projects.

- Rigorous recycling efforts keep almost **1.7 million tons** of material out of Wisconsin landfills and incinerators each year.
- Wisconsin citizens have saved landfill space equivalent to the size of **five average** landfills since 1990.
- In Wisconsin, we generate **4.6 million tons** of trash and recyclables each year. That's enough to fill a typical city street over 4 feet deep with trash (curb to curb) for **575 miles!** If you remove the recyclables, only 357 miles would be filled with trash.

*Source: Wisconsin Department of Natural Resources*

**Landfill Siting:** Allow municipalities to replace existing public landfills without a new DNR needs determination. Support modifying landfill negotiation-mediation process to include counties as an appropriate governing body for the approval of negotiated agreements. Support prohibiting the construction of landfills until the negotiation-mediation process is complete.

**Clean Sweep:** Support increased state/federal funding for household and Ag Clean Sweep.

## **Oppose State Increases in Landfill/Solid Waste Fees and Program**

**Reductions:** Oppose state increases to the landfill recycling tipping fee and environmental repair fee. Oppose the elimination or reduction of recycling and solid waste programs.



# Land Use, Land Records, and Land Regulation

---

**Flood Insurance Threat:** Oppose any proposal to suspend state floodplain rules that nullify federal flood insurance and jeopardize federal disaster assistance for Wisconsin flood victims.

**Wisconsin Land Information Program:** Support the continuation of the Wisconsin Land Information Program and grants.

**Comprehensive Planning:** Oppose legislation that undermines the comprehensive planning statutes.

**Transmission Lines:** Request the State to support an independent study of the need for additional high voltage transmission lines through Dane County. Oppose the construction and operation of the proposed Cardinal-Hickory Creek transmission line pending the receipt of a comprehensive cost-benefit analysis of non-transmission alternatives.

**Takings Legislation:** Oppose legislation that would require county government to compensate real property owners for restricted use or loss of property value as a result of law or regulations.

**Support Local Control of Nonmetallic Mining:** Oppose any state legislation that preempts local governments from enacting their own nonmetallic mining regulations and oversight of air/water quality, highway damage, noise, and use contracts.

**Effigy Mounds & Burial Sites:** Oppose legislation that allows the disturbance or destruction of Native American effigy mounds and old burial sites.

**Utility Deregulation:** Oppose any deregulation that leads to higher consumer rates. Any attempts to restructure the delivery of electricity should address: reliability of electrical service, equitable benefits to large and small rate payers, the social and environmental impacts of restructuring, and the ability of counties to aggregate to purchase electricity.

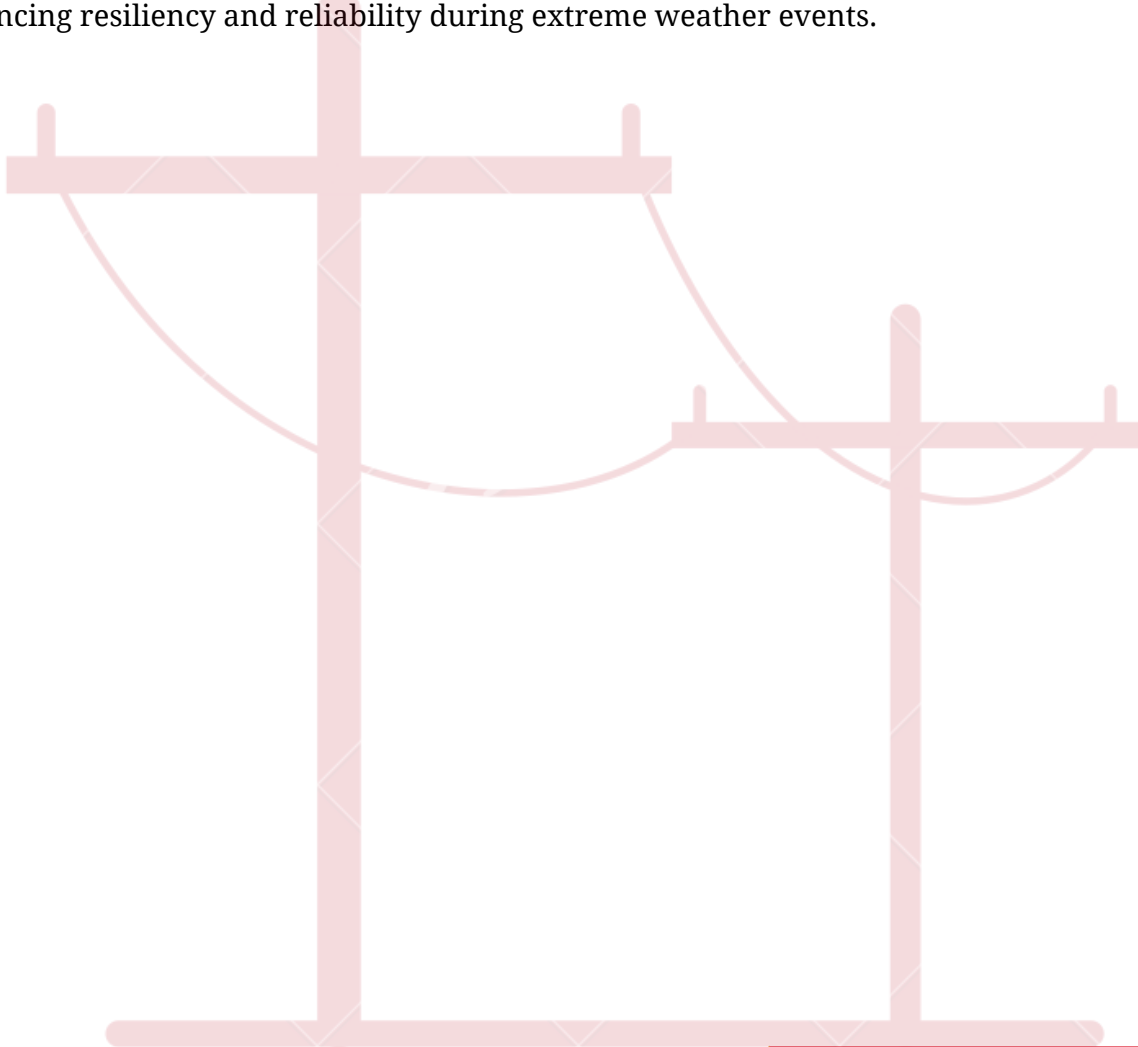


**Holding Tanks as Systems of Last Resort:** Support changes in statutes and administrative rules that oppose using holding tanks except as a last resort for new and replacement septic systems. Modify rules and statutes to ensure funding from the Wisconsin Fund is for the least costly systems, excluding holding tanks, unless a holding tank is the system of last resort.

**Land Use and Natural Resource Protection:** Oppose any proposals that weaken Dane County's ability to responsibly manage the use of land within its jurisdiction, including but not limited to tools like comprehensive planning, zoning, land division/subdivision regulations, and shoreland, floodplain, and wetland regulation.

**Restore and Enhance Land Use Authority:** Support efforts to restore and expand Dane County's land use authority, including but not limited to comprehensive planning, land division, zoning, and shoreland, wetland, and floodplain regulations to promote countywide planning.

**Transmission Line Construction:** Support requiring power lines to be constructed underground to protect Dane County economic and environmental resources while enhancing resiliency and reliability during extreme weather events.



# Elections

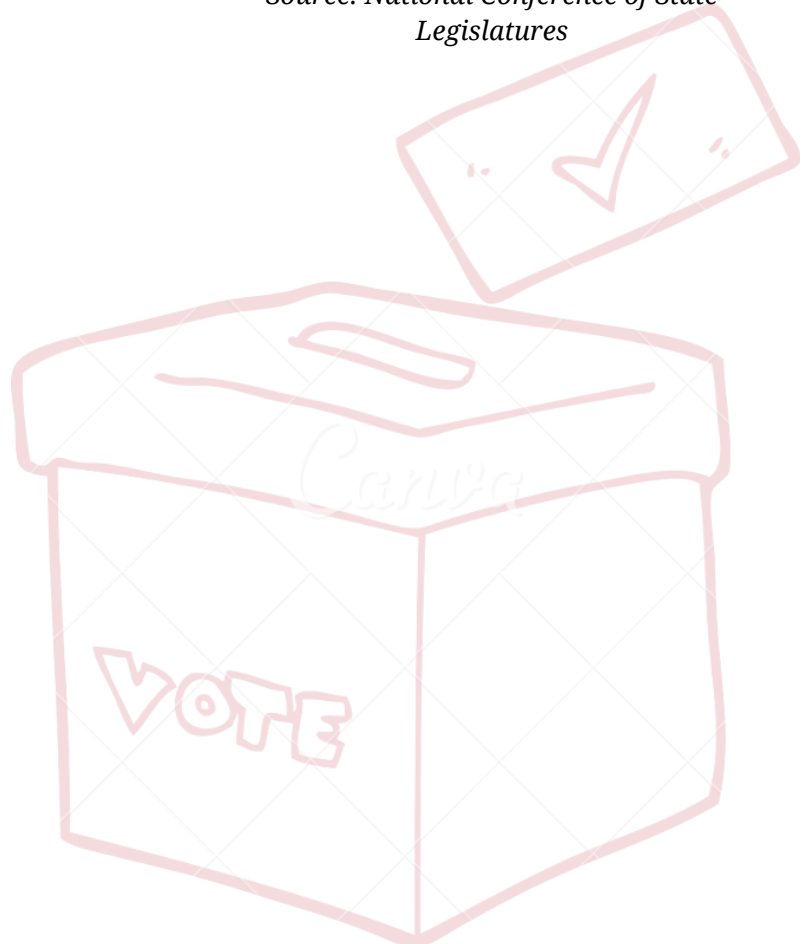
## Voter Registration Changes and Voter Identification

**Requirement:** Oppose legislation that changes same day voter registration, reduces times for absentee ballot voting, and/or requires photo identification to vote.

**Public Funding for Elections:** Support public financing for local and state elections.

“President Theodore Roosevelt believed public financing of elections would ensure that no particular donor has an outsized influence on the outcome of any election, and would “work a substantial improvement in our system of conducting a campaign.””

*Source: National Conference of State Legislatures*



# Community, Workforce, and Economic Development

**Wisconsin’s Fair Employment Act:** Oppose permitting an employer to refuse to employ, bar or terminate from employment an individual who has been convicted of a felony and who has not been pardoned for that felony, and pre-empting local government from adopting ordinances concerning employment discrimination based on arrest or conviction records that prohibit activity allowed under the state Fair Employment Act.

**Minimum Wage:** Support increasing the minimum wage to a living wage.

### Living Wage for Dane County

Hourly Wages	1 Adult	1 Adult 1 Child	1 Adult 2 Children	1 Adult 3 Children	2 Adults (1 Working)	2 Adults (1 Working) 1 Child	2 Adults (1 Working) 2 Children	2 Adults (1 Working) 3 Children	2 Adults (1 Working Part Time) 1 Child*	2 Adults	2 Adults 1 Child
Living Wage	\$12.69	\$26.30	\$30.96	\$39.06	\$20.21	\$23.53	\$26.17	\$29.93	\$27.83	\$10.10	\$14.33
Poverty Wage	\$5.84	\$7.91	\$9.99	\$12.07	\$7.91	\$9.99	\$12.07	\$14.14		\$3.96	\$5.00
Minimum Wage	\$7.25	\$7.25	\$7.25	\$7.25	\$7.25	\$7.25	\$7.25	\$7.25		\$7.25	\$7.25

Source: Living Wage Calculator from MIT

**UW Extension:** Support adequate staffing and funding levels to sustain Dane County Extension’s high-quality educational programs for farmers, businesses, communities, families, and young people.

**Collective Bargaining and Workers Rights:** Support all workers having the right to seek safe working conditions, benefits, and fair pay through collective bargaining.

**Student Debt:** Support legislation to lower student debt by any means possible, including refinancing loans, implementing tax breaks for those paying back the loans, reducing interest rates, and ensuring tuition is affordable.

**School Choice Expansion:** Oppose the voucher program in the Madison Metropolitan School District or in any Dane County school system.

**Rural Broadband Coverage:** Support increasing financial support to expand broadband services to underserved rural areas.

# Arts

---

**Arts Funding:** Support increased funding for the arts across Wisconsin, especially for art projects in communities, schools, colleges, and public facilities.

“Art speaks where words are unable to explain.”

*-Threadless Artist Mathiole*

