

Preliminary Plat - Parkside Ridge

Village of Cottage Grove

Plat consists of 16 lots, 37.9 acres.

Parks - No parkland shown.

Parkways - none

Expressways - N/A

Major Highways - CTH BB to the north.

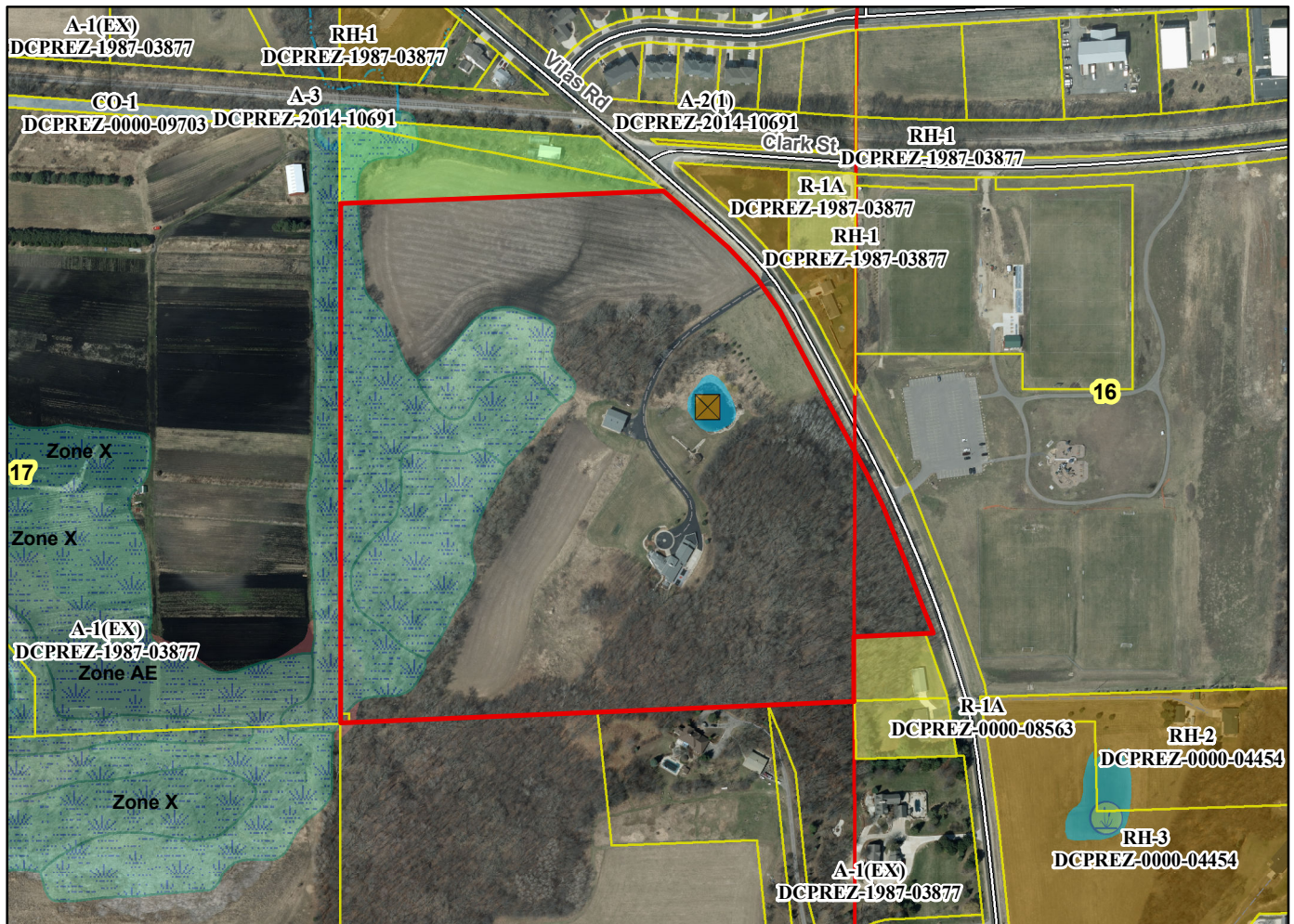
Airports - Dane County Regional

Drainage Channels - None shown.

Schools - established

Other Development - OL1 dedicated to the public for stormwater management purposes.

Plats of subdivisions located in all other incorporated municipalities shall be submitted to the committee, as provided by section 236.12(2)(b) of the Wis. Stats., for the purpose of determining whether the committee has any objection to the plat. The basis for any objection to any such plat shall be that the plat conflicts with parks, parkways, expressways, major highways, airports, drainage channels, schools or other planned public developments.



Motion to certify with no objections: _____, Second: _____, Vote: _____