



2016 Dane County Yahara WInS Adaptive Management Report

July 18th 2017

Dane County Land & Water Resources Department

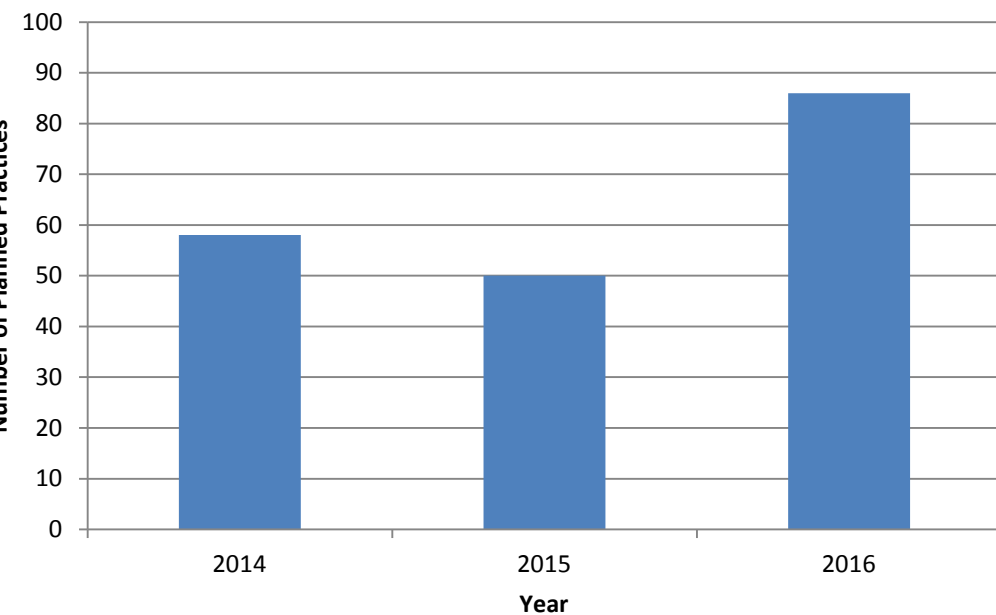
Kyle Minks

Land and Water Resources Scientist

2016 Accomplishments

295 landowners/producers assisted

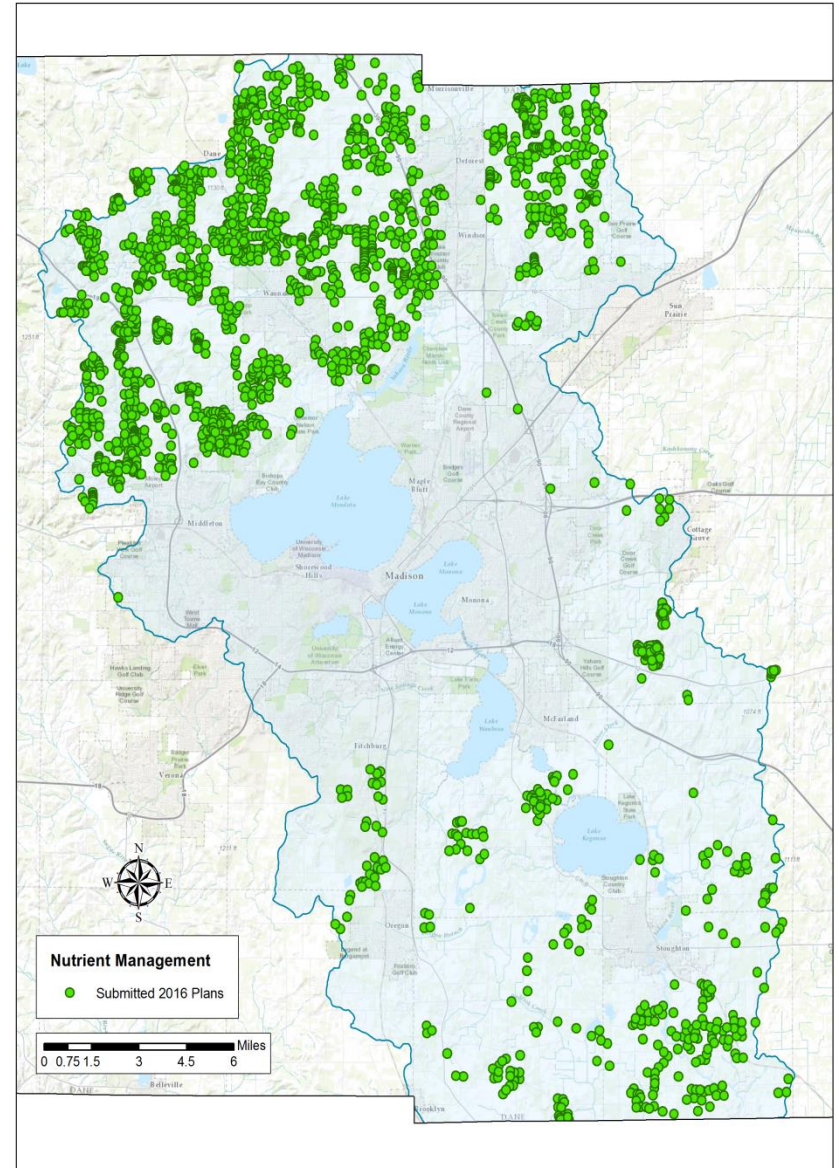
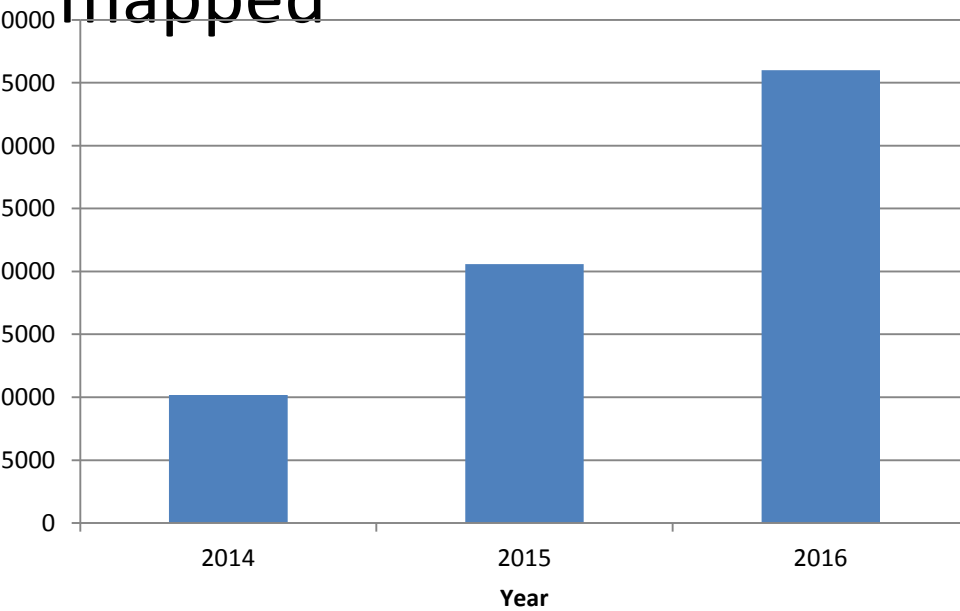
85 conservation practices receiving planning and technical assistance



2016 Accomplishments

313 conservation practices being tracked and reducing phosphorus

39,600 acres of nutrient management plans mapped

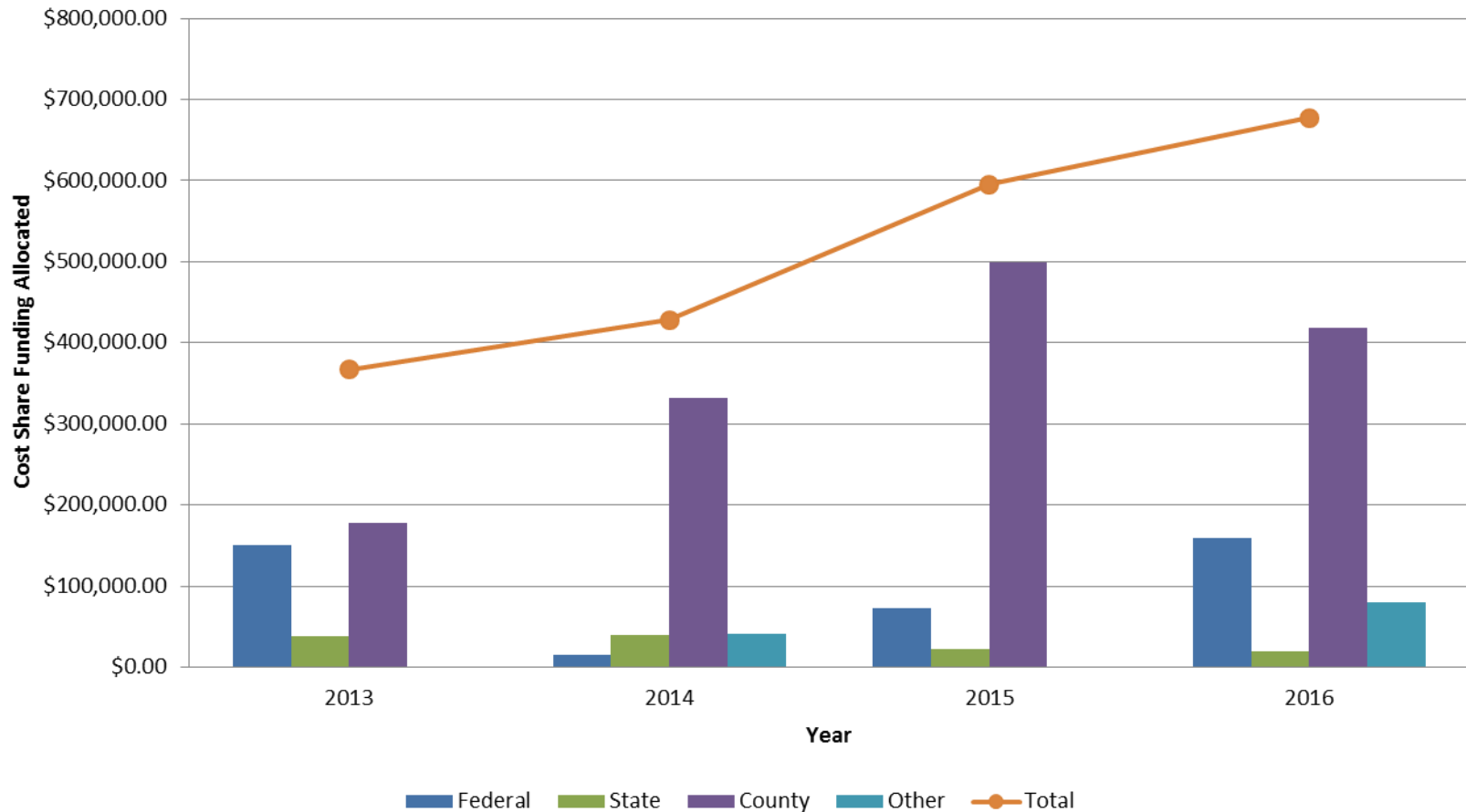


Construction Challenges



2016 Accomplishments

\$677,000 allocated in cost share assistance

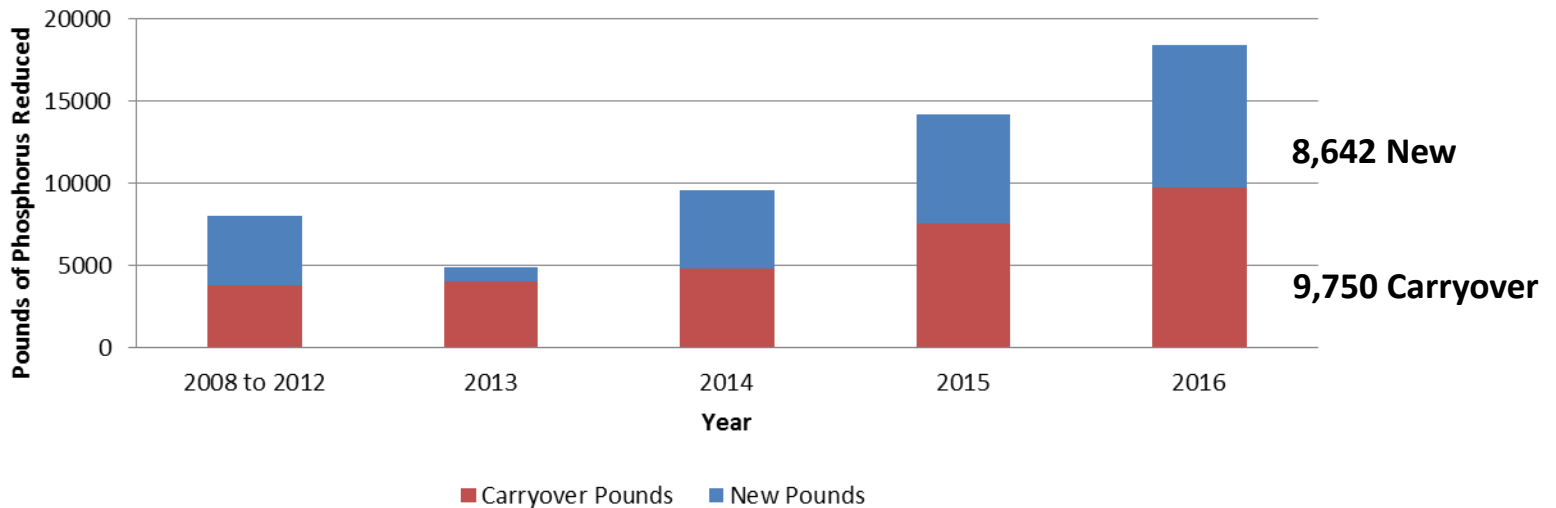


2016 Accomplishments

18,392 pounds of phosphorus reduced

TMDL Reach	2008-2012		2013		2014		2015		2016	
	New	Carryover	New	Carryover	New	Carryover	New	Carryover	New	Carryover
62	402.9	390.2	0	390.2	118.7	390.2	440.4	407.9	558.8	407.9
63	1272.8	1219.3	26.6	1272.8	1503	1299.4	957.7	2446.6	548.9	2506.1
64	1653.9	1450	301.2	1578.5	1934.2	1875.8	3568	2243.4	5355.4	2712.9
65	0	0	0	0	0	0	0	0	182.2	0
66	494.6	448.1	432.6	474.3	812.7	906.9	1408.7	1719	733.5	3106.9
67	65.5	55.8	0	55.8	205.5	55.8	277.1	253.9	206.9	523.6
68	189.1	141	2.3	189.1	5.2	191.4	5.2	191.4	469.6	191.4
69	95.2	95.2	29.1	95.2	136.1	124.3	41.1	260.4	586.3	301.5

Total Yahara Watershed



Harvestable Buffer Extensions

- 10 contract extensions
- 43.7 acres of buffer (9 miles)
- 5 year extension (15 year total)
- \$98,325.00 cost
- 1,138 pounds of phosphorus reduced
- **\$27.15** per pound of phosphorus reduced



2017 Dane County Activities

- Low disturbance manure injection
 - Two agreements
- Community manure storage/feasibility
 - Cost share
 - Request for proposals
- Cover crops
 - 2,000 acres per year for 3 years
- Harvestable buffers
 - 4 new agreements
- Dane County grazing network
 - Conversions and pasture walks



2017 Dane County Activities

- Conservation practices
 - Construction of waterways, diversions, manure storage, streambank stabilization, etc.
- Practice verification checks
 - 130 practices
- Lake preservation/land acquisition
 - Bollig Farm Property LLC – 81 ac
 - Ronald and Heather Treinen – 130 ac
- Legacy sediment removal
 - Request for proposals
 - 2.3 miles
- Urban water quality grant program
 - Accepting applications

Proposed Bollig Farm Property LLC Acquisition

