

# Preliminary Plat - Spruce Valley

## Town of Middleton, Section 29

13 lots, 15.7 acres 10 residential lots (9 proposed for development).

Zoning district: A-1, agricultural

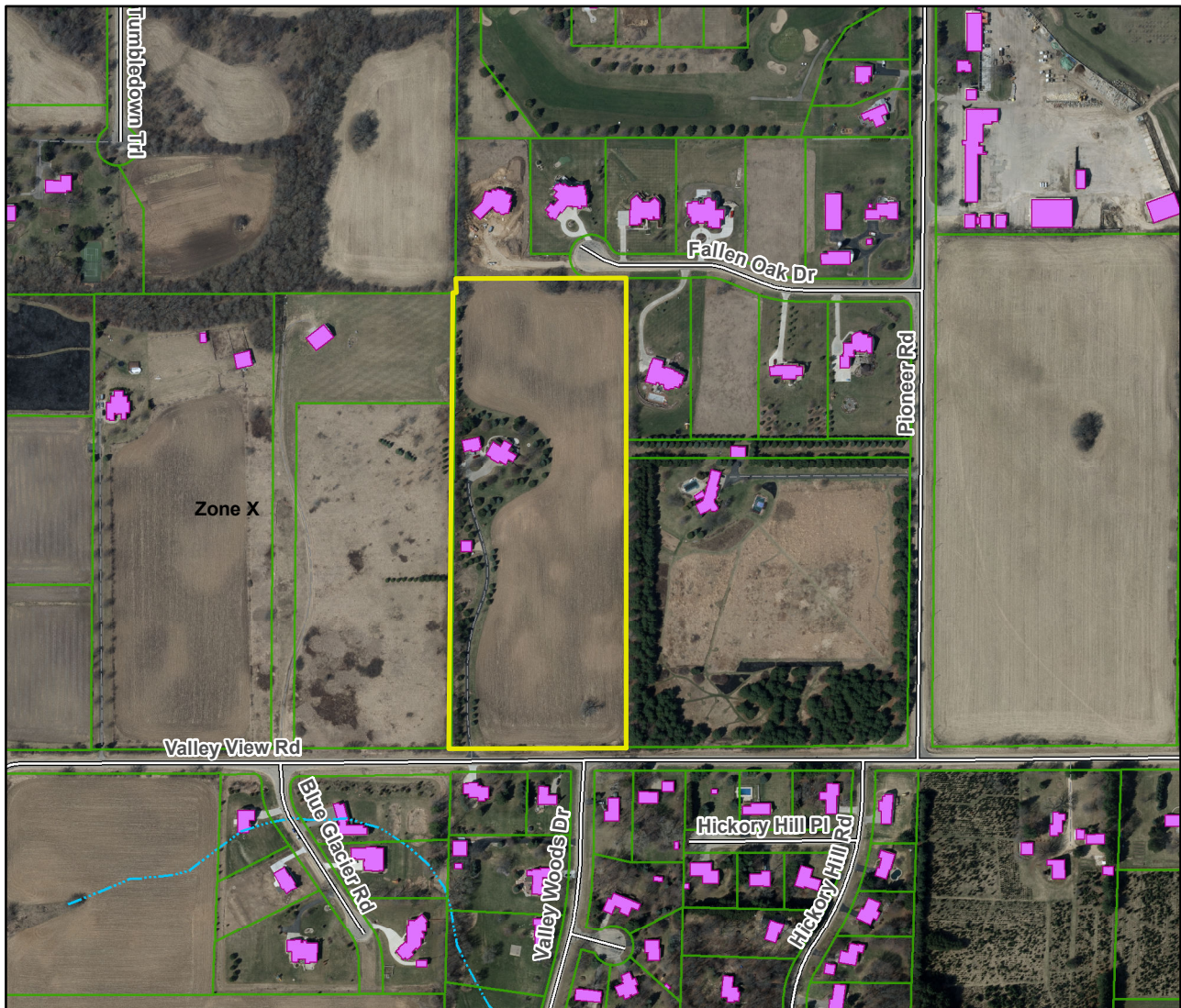
Lots will be served by private on-site septic systems.

Outlots are for stormwater management facilities and are to be maintained either by the lot owners or a private homeowners association.

No sensitive environmental features.

Valley Woods Dr. is being extended to the north to serve lots 1-7.

Fallen Oak Dr. is being extended to the west to serve lots 9 and 10.



January 10, 2017 ZLR mtg.

Motion to approve/deny by \_\_\_\_\_, seconded by \_\_\_\_\_. Motion passed \_\_\_\_\_