

USFWS Upper Mississippi/Great Lakes Region Joint Venture Plan, 2007

Birds that rely on Grasslands



Audubon Great Lakes - National Audubon S...
Audubon Conservation Ranching ...



Audubon Great Lakes - National Audubon S...
Audubon Conservation Ranching ...



Southern Wisconsin Bird Alliance
Wisconsin's Birds in a Changing Climate ...

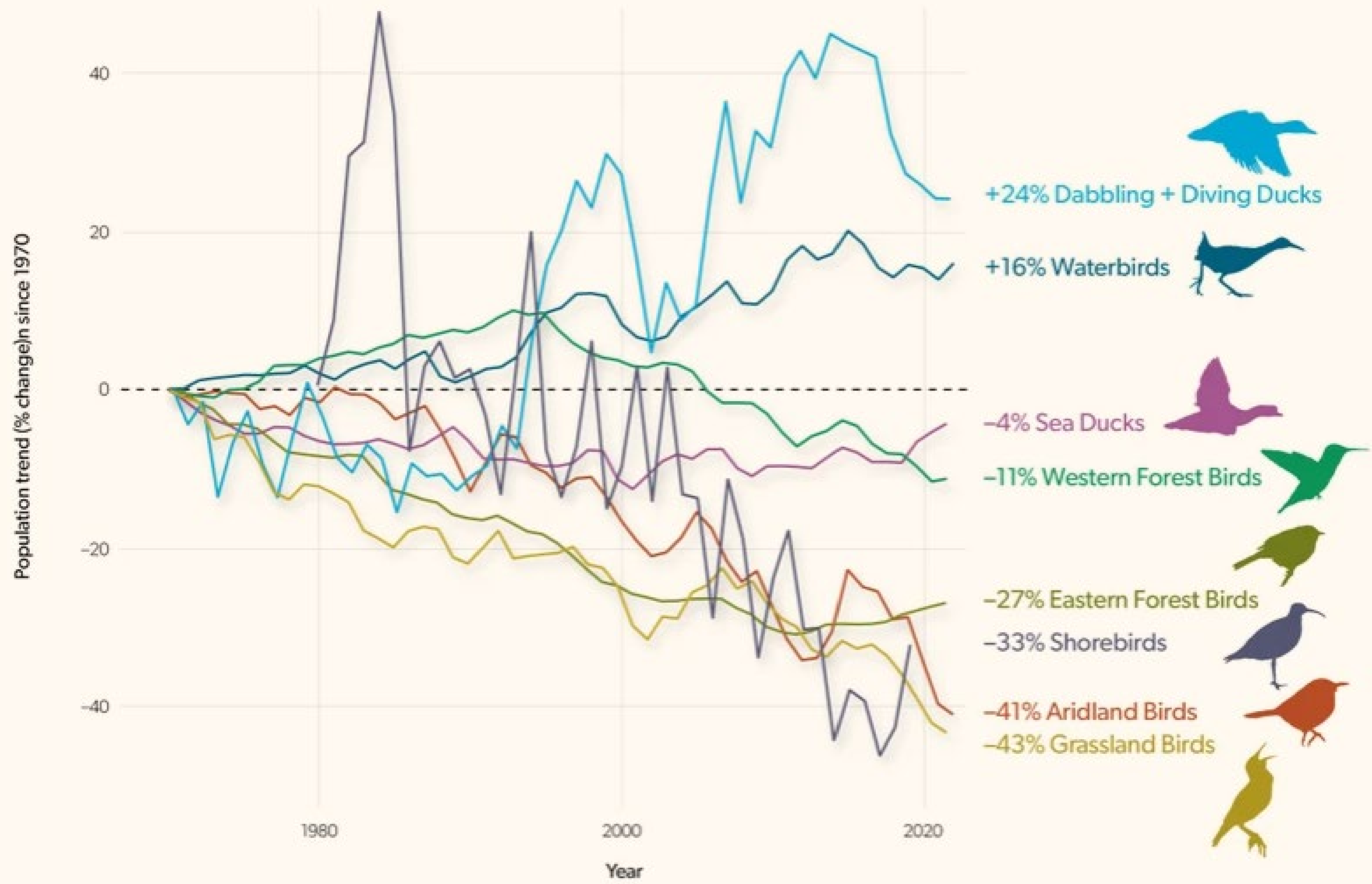


Audubon Great Lakes - National Audubon So...
Audubon Conservation Ranching ...



Southern Wisconsin Bird Alliance
Southern Wisconsin Bird Allia...

Long-term Population Trends for America's Birds





Why?

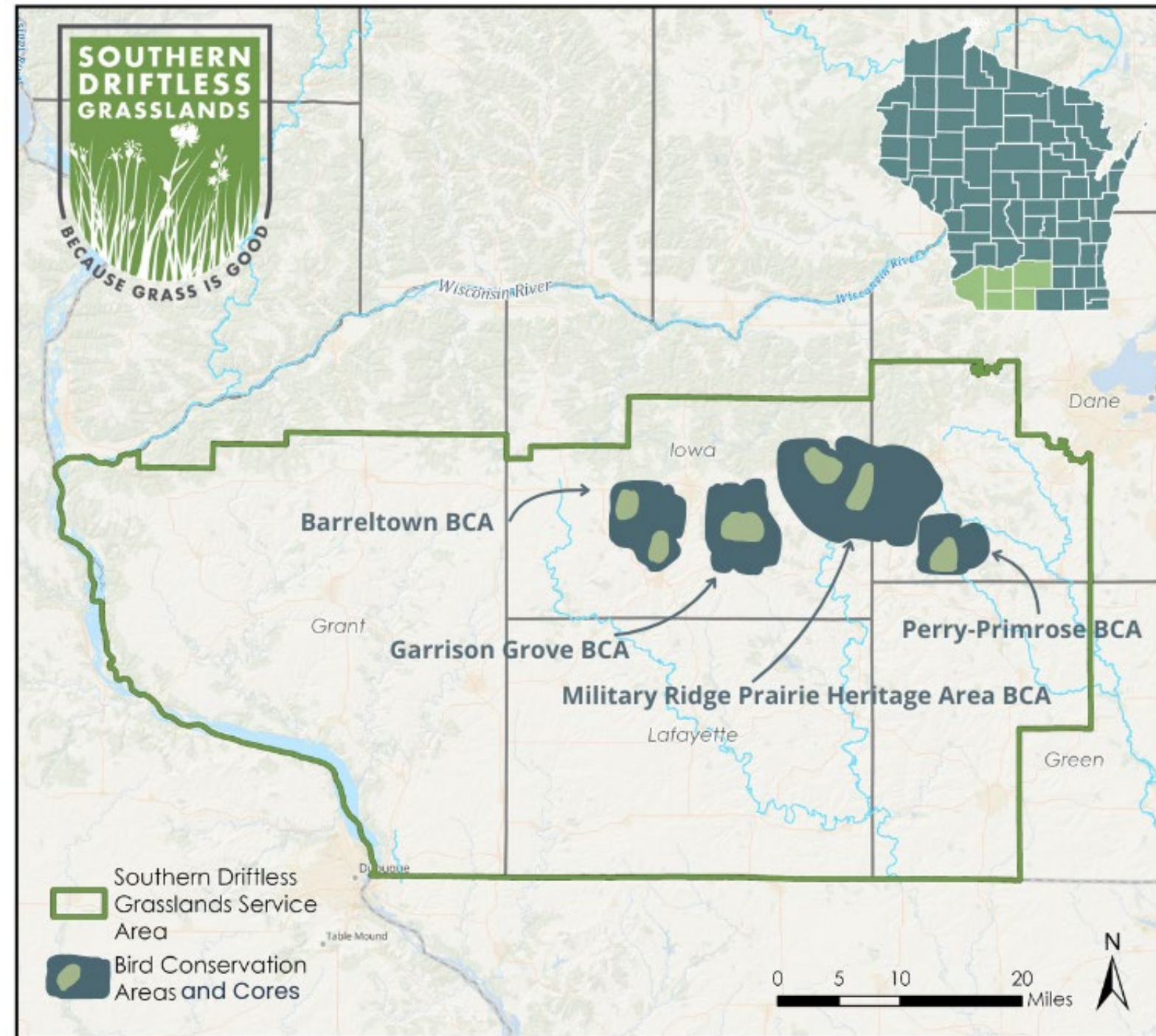
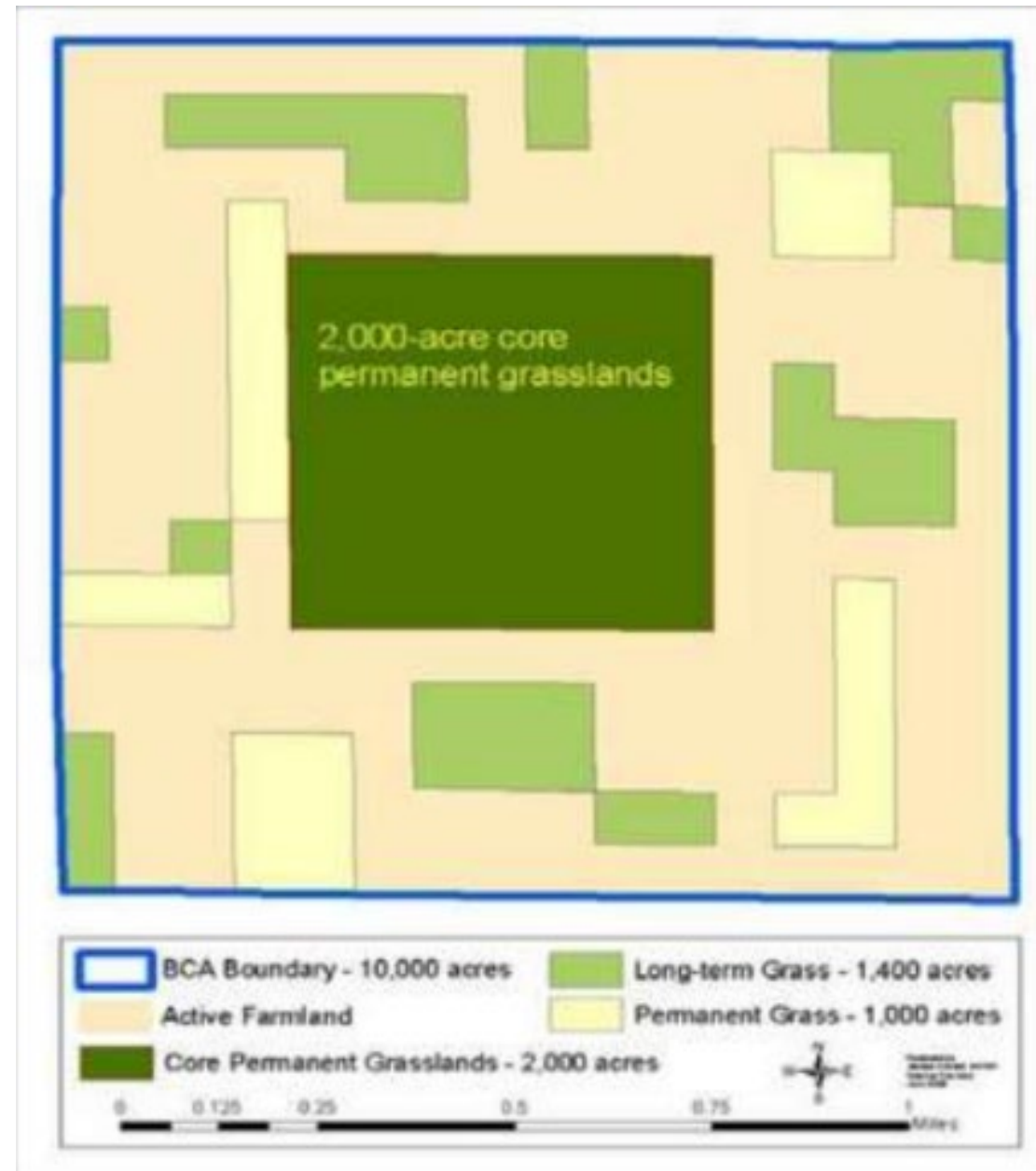
Is all of this really just for birds?





How do you prevent grassland habitat loss at a landscape scale in a region where land is fragmented and 95% of the land is privately owned?

Designation of Bird Conservation Areas

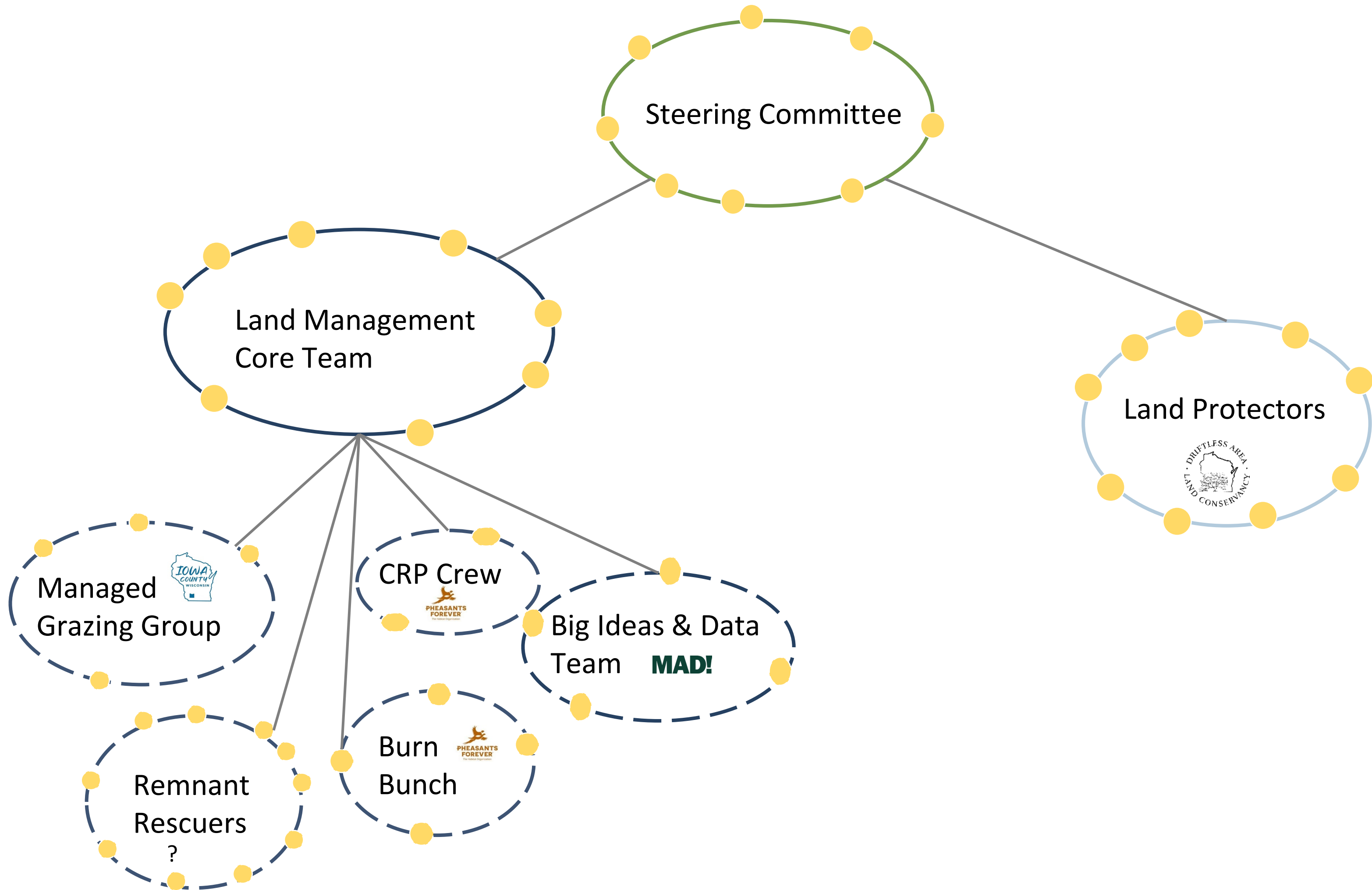




15 Years Later...

SDG Partners





SDG Land Protectors (Focus: Easements and Fee Title)



Alison Volk



Marty Moses



Claire Davidson



Sharene Smith



Matt Reetz



Fil Sanna



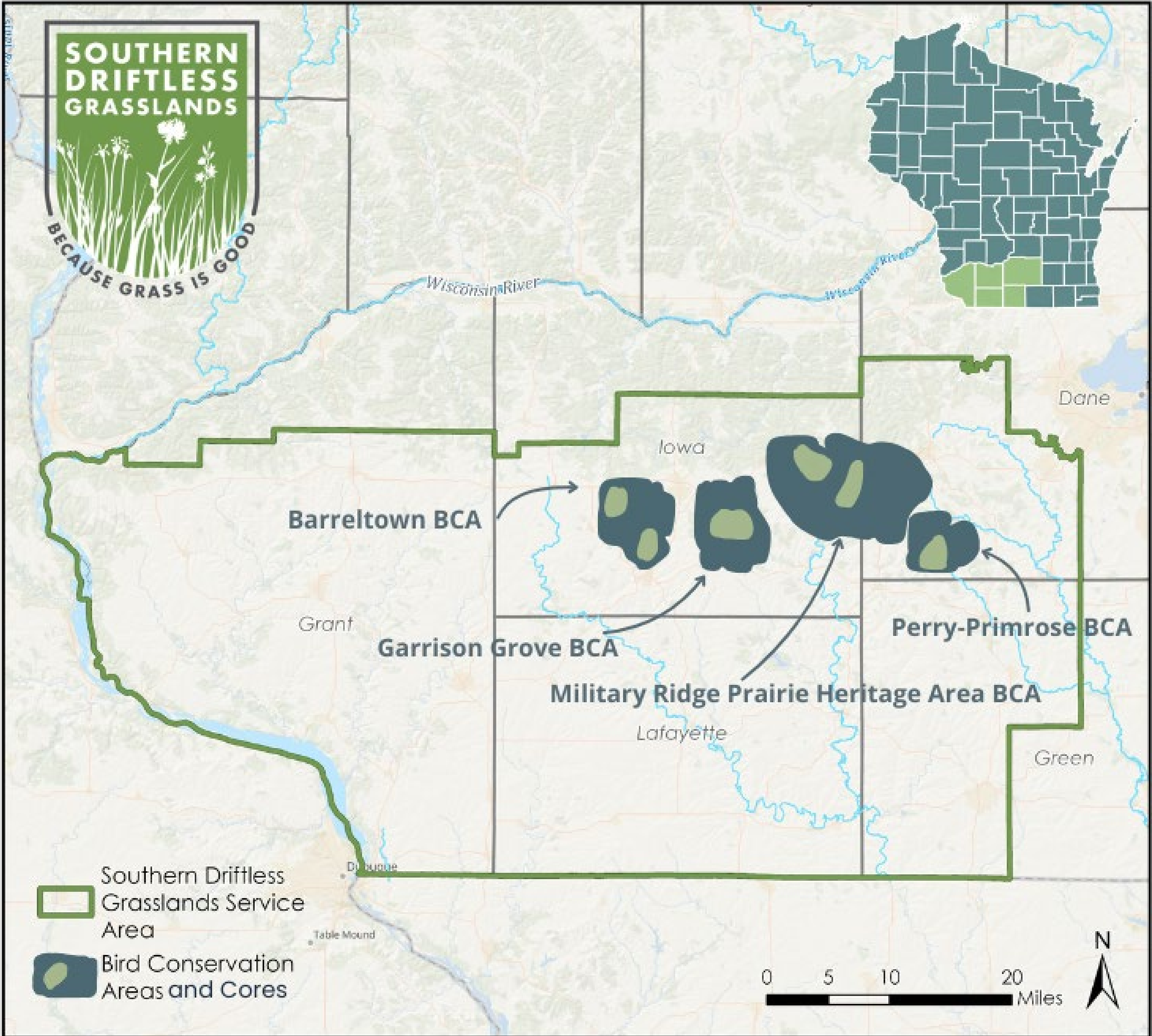
Sharon Fandel
Dave Sample (Retired)



Stephanie Judge (Chair)



Rich Henderson





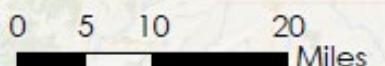
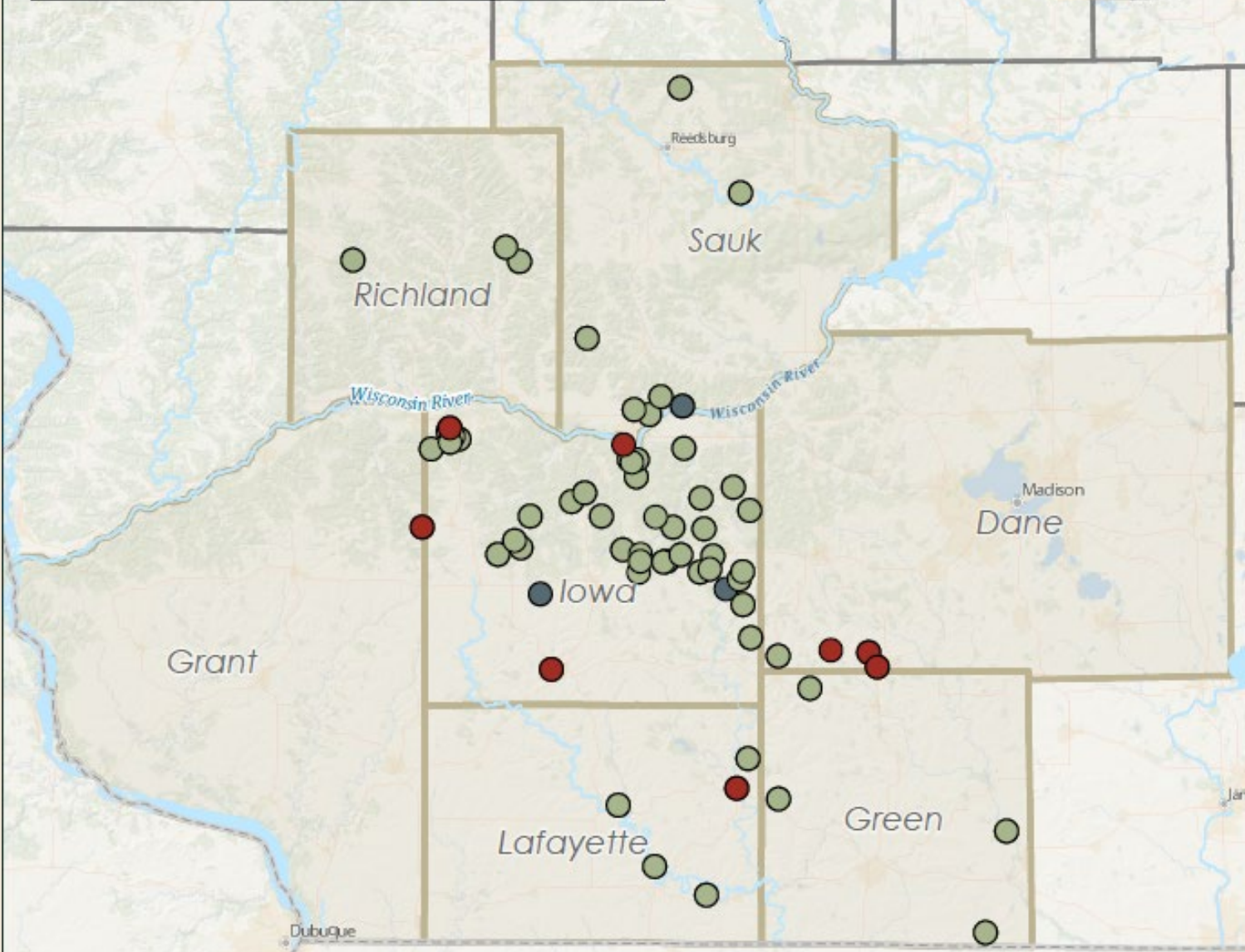
DRIFTLESS
AREA LAND CONSERVANCY



DRIFTLESS AREA LAND CONSERVANCY

Protected Properties Map

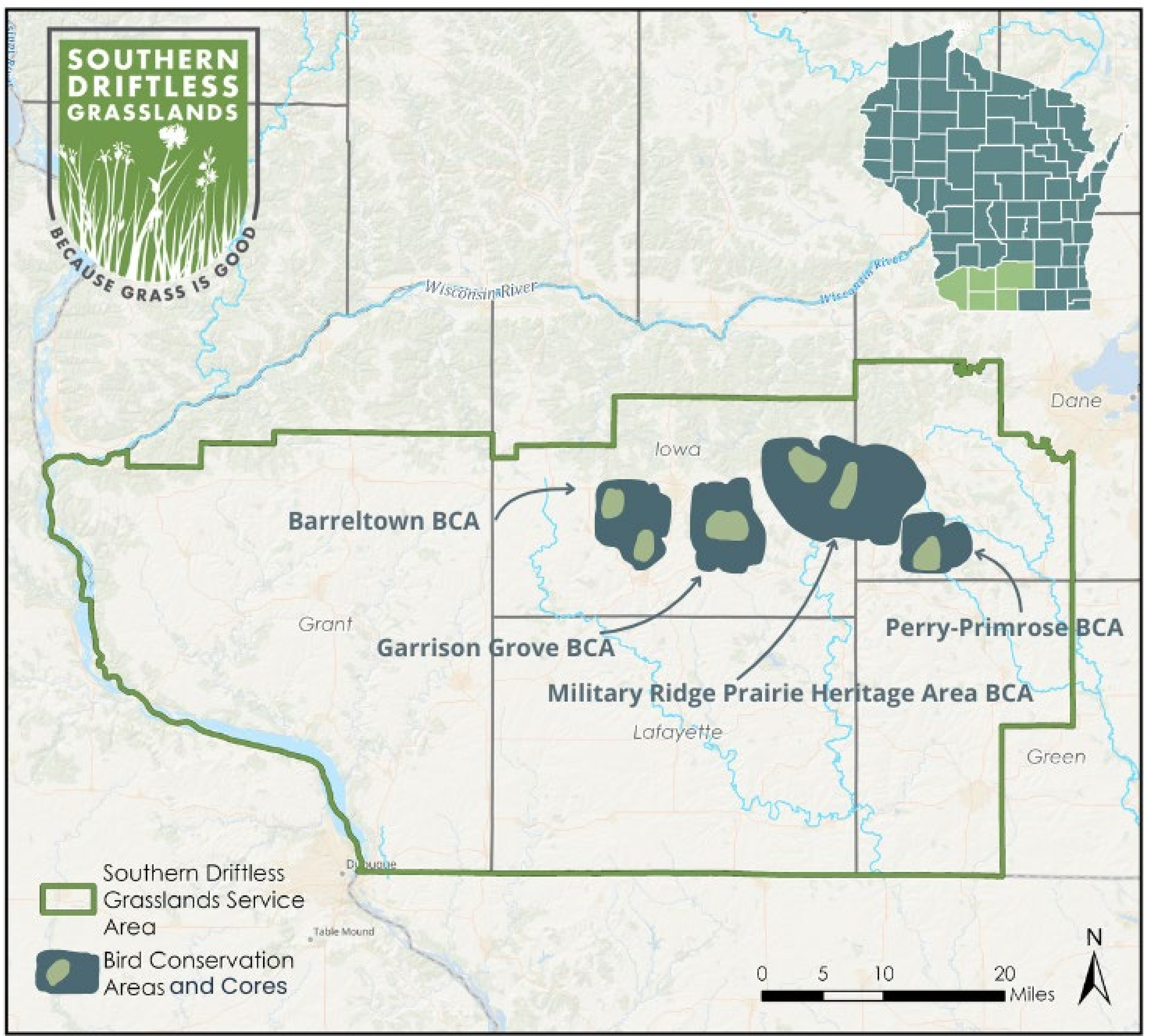
Updated January 2026



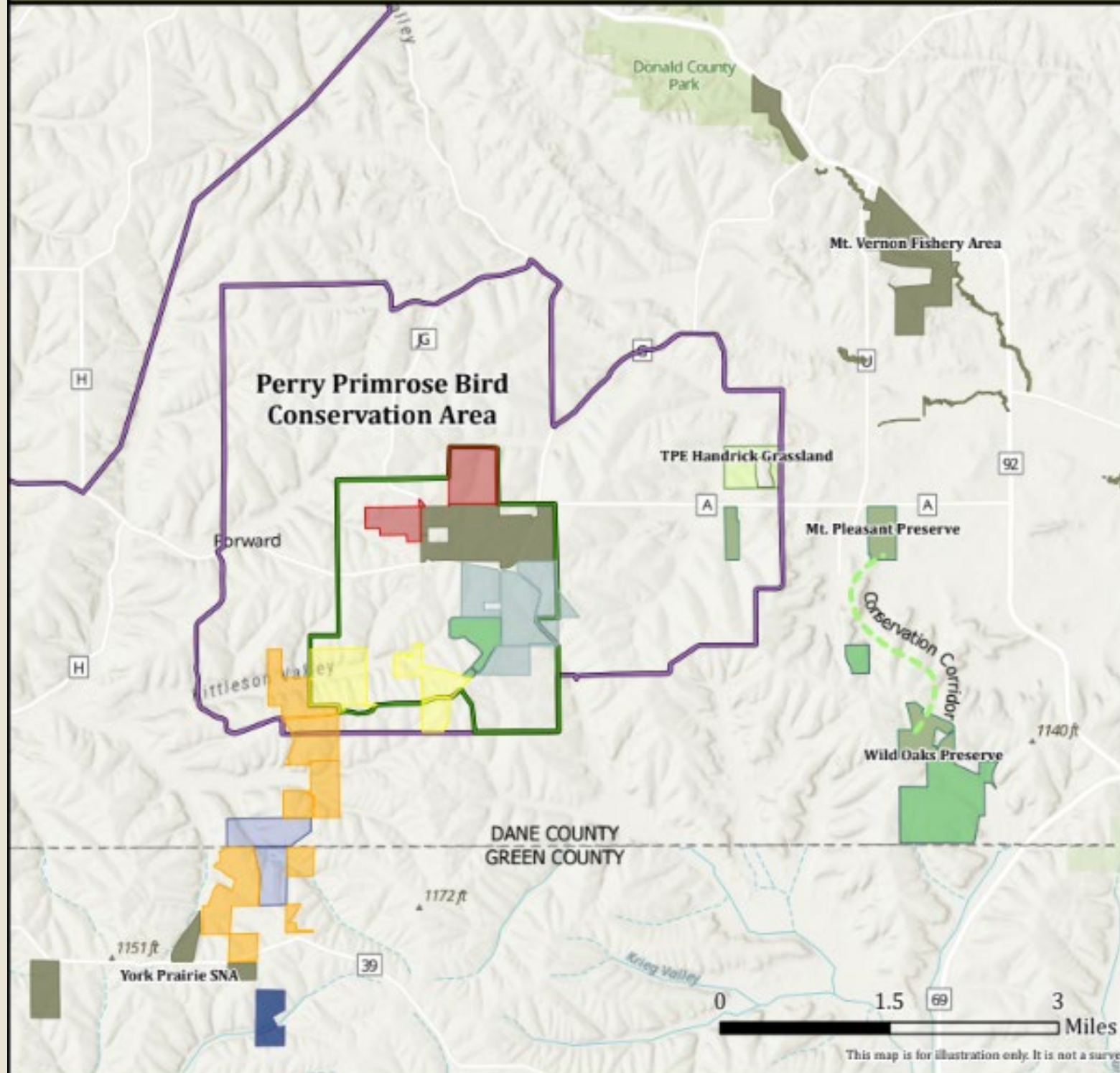
Acres Protected by County	
Iowa: 7,282	Green: 413
Sauk: 1,131	Dane: 477
Lafayette: 925	Richland: 316
Grant: 140	

Legend

- Counties served by DALC
- DALC Nature Preserves
- Conservation Easement
- Assist

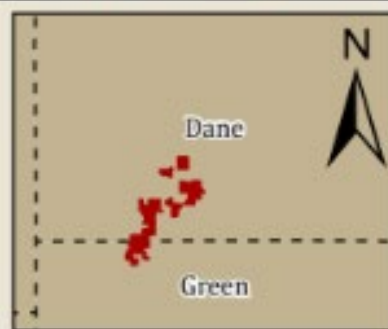


Perry Primrose BCA to York Prairie Corridor Driftless Area Land Conservancy Project Prospects



Legend

- | | |
|-------------------------------|------------------------------|
| Closing Imminent | DALC Conservation Easement |
| Fee Pending - Listed for Sale | DALC Preserve |
| Easement Pending | BadgerLand Foundation |
| Conversations in Progress | Wisconsin DNR |
| Outreach Needed | Bird Conservation Areas |
| | Bird Conservation Area Cores |



3 Projects | \$751,238 | 164 Acres

Samuel-Thomas CE: 53 acres; \$40,626

Berlow: 31.4 acres; \$246,312.50

Kernen: 80 acres; \$464,300



How do you prevent grassland habitat loss at a landscape scale in a region where land is fragmented and 95% of the land is privately owned?

THANK YOU DANE COUNTY!



DRIFTLESS
AREA LAND CONSERVANCY

