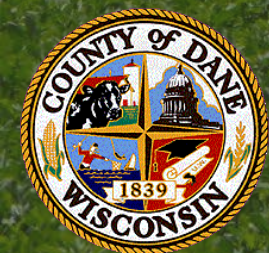


Adaptive Management Update

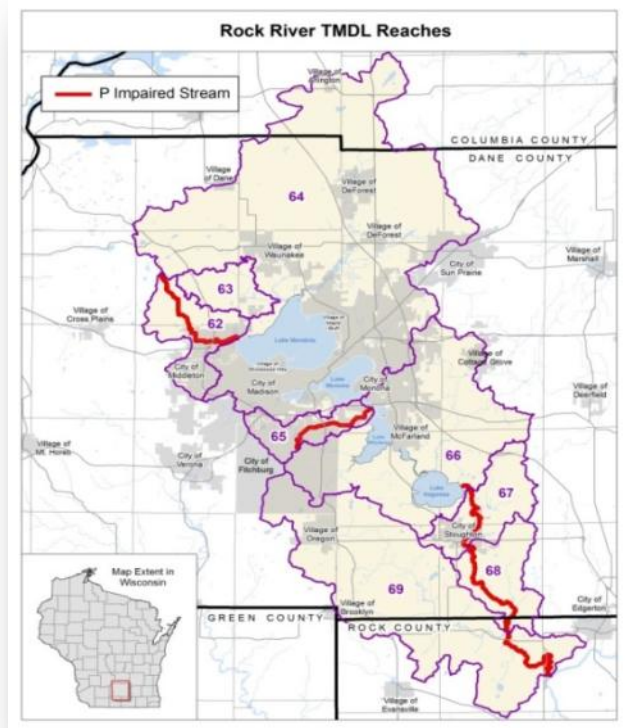
to EANR Committee, August 18, 2015



Amy Callis & Kyle Minks
Land Conservation Division
Dane County Land & Water Resources Department

Background

- Contracted with MMSD since 2013
 - Includes partnerships with other entities such as: Clean Lakes Alliance, Yahara Pride Farms, Yahara WINs
- Focused on implementation of agricultural practices for phosphorus reduction
 - Yahara WINs Adaptive Management Pilot Project, RCPP Grant
- Located in the Yahara and Badfish Creek Watersheds



Current Status

- Pilot project ends 2015
- RCPP grant received 2015
- Plan development
 - Door Creek Implementation Plan
 - Full scale adaptive management plan
- Phosphorus Goals:
 - 3,552 pounds in 2014
 - Approximately 2,000 pounds to date in 2015



Harvestable Buffers

- Over 44 acres of buffers installed
- 10 year contracts
- 1,022 pounds of P reduced per year



Low Disturbance Manure Injection

- New program to cost share LDMI equipment
- Reviewing first round of applications



Additional Updates

- 2 new Soil Conservationists started in June
- Contract signed with UW to conduct a manure storage assessment
- Contract under development to evaluate existing LCD computer workflow and software
- Legacy sediment core sample results being evaluated
- Ongoing reporting requirements under contracts and service agreements with MMSD

Next Steps

- Develop 2016 work plan for AM implementation with MMSD
- Explore options for a long term agreement for implementation of a full scale AM plan
- Provide assistance with development of full scale AM plan
- Implement RCPP grant and begin implementing Door Creek plan
- Continue promoting existing conservation programs



Questions?

