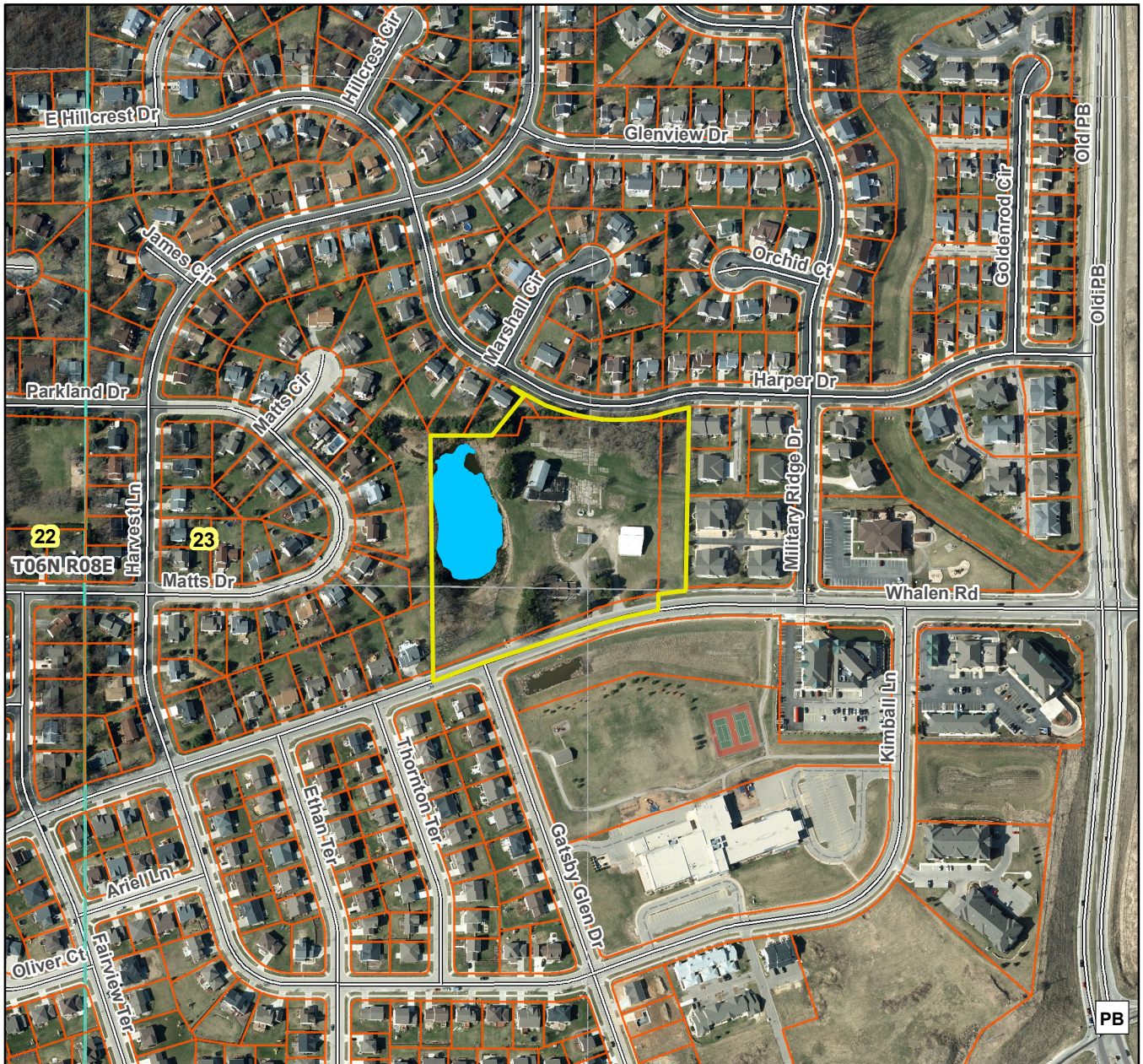


Rockweiler Plat

City of Verona T06N R08E, Section 23



Plat consists of 7 lots, 8.5 acres. (Replat)

Parks – None associated within these lots. Elver Park to the west.

Parkways – N/A

Expressways – N/A

Major Highways – Raymond Rd. to the south.

Airports – Dane County Regional Airport (14 mi)

Drainage Channels – All lots are subject to public easements for drainage purposes.

Schools – Established.