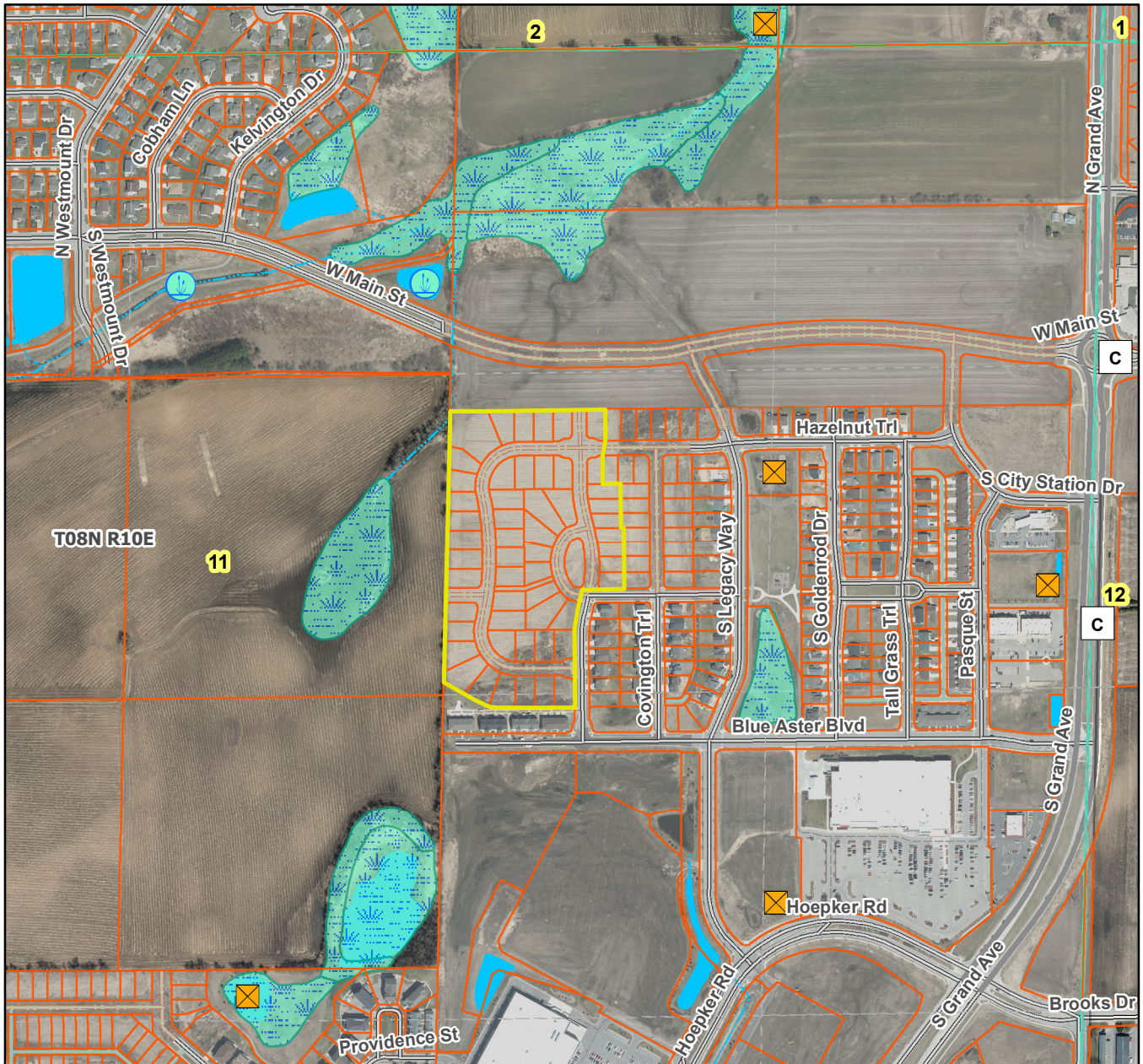


Fox Point

City of Sun Prairie T08N R10E, Section 11



Plat consists of 59 lots, 16.6 acres. (Replat)

Parks – None shown.

Parkways – N/A

Expressways – N/A

Major Highways – CTH C to the east.

Airports – Dane County Regional Airport (6 mi)

Drainage Channels – Drainage easements and arrows shown throughout the plat.

Schools – Established.