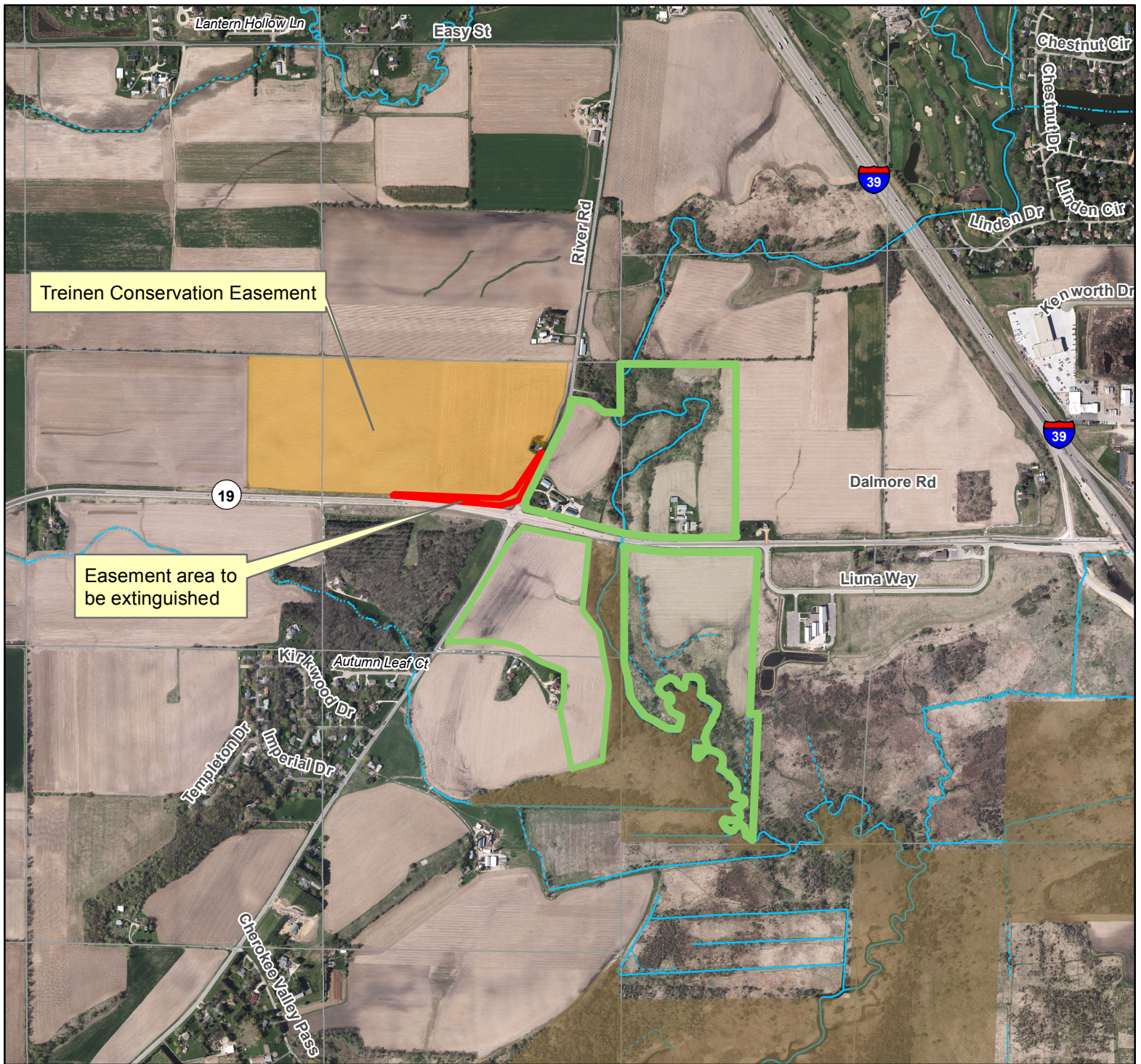
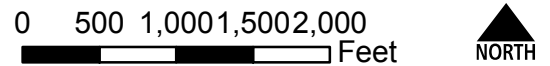


WI DOT Highway 19 and River Road reconstruction project Treinen Conservation Easement, Town of Westport



- Easement area to be extinguished (approx. 1.031 acres)
- Conservation Easement held by County
- County owned
- DNR owned



Data Sources:
Tax Parcels (3-2018)
Digital orthophoto from April 2017.

Prepared by Dane County Land & Water Resources Department, April 2, 2019

Document Path: H:\LandAcquisition\AcquisitionProjects\Westport\DOT_Hwy19_RiverRoad\Treinen_DOToffer_appraisal\DOT_TreinenSubjectMap.mxd

