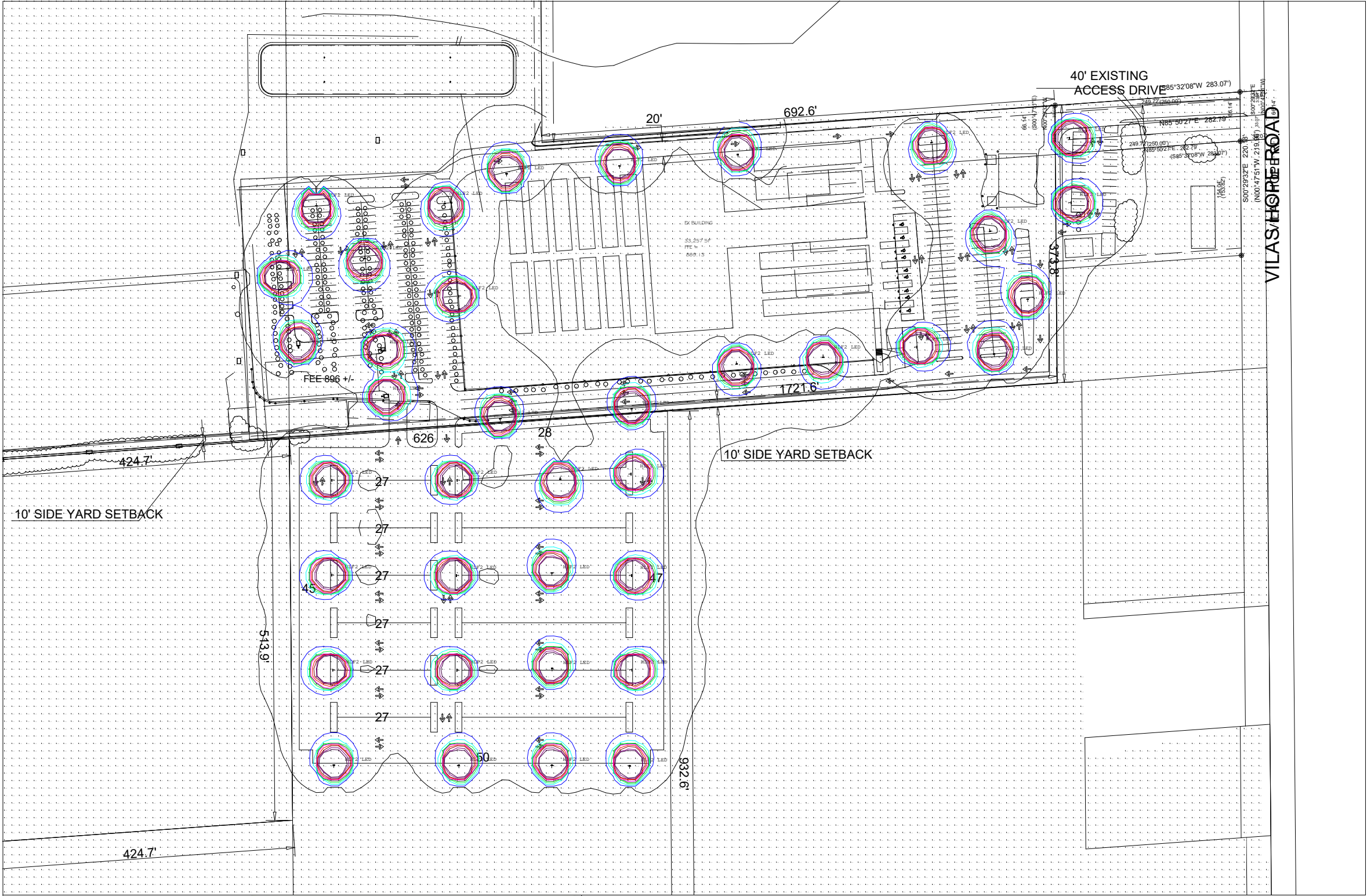


Revised Lighting Plan  
v. April 17, 2025



Scale: 1 inch= 150 Ft.

| Value (Fc) | Color        | Value (Fc) | Color    | Value (Fc) | Color       |
|------------|--------------|------------|----------|------------|-------------|
| 0.01       | Black        | 0.4        | Green    | 1.5        | Purple      |
| 0.1        | Blue         | 0.5        | Magenta  | 2          | Dark Purple |
| 0.2        | Cyan         | 0.75       | Red      |            |             |
| 0.3        | Bright Green | 1          | Dark Red |            |             |

Isoline Legend

Snyder & Associates, Inc. #125.0167.30 04-04-2025

- Assumptions:
- Proposed High Lumen Light Size 2
  - 14 ft Mounting Height
  - 38 Proposed HLF2 Fixtures

| Illumination Calculation Summary |       |      |      |     |               |
|----------------------------------|-------|------|------|-----|---------------|
| Label                            | Units | Avg  | Max  | Min | Lot Line Calc |
| Warm Belly Adventure Farm        | Fc    | 0.08 | 20.6 | 0.0 | 0.0           |

# Solar Street Lamp

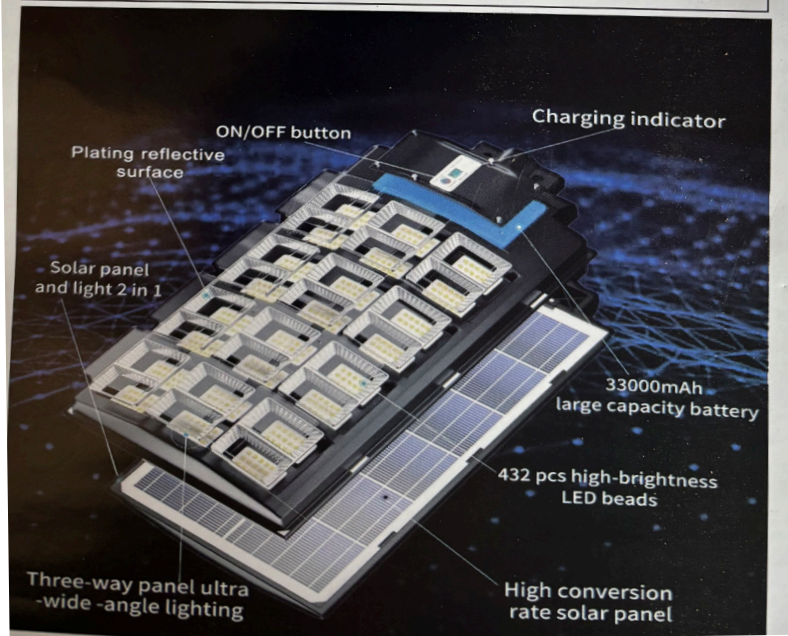
## User Manual & Instructions

**IMPORTANT:** Please read and understand all instructions before installing and using your Solar Street Lamp. Please follow these important steps:

- 1) Read User Manual & Instructions.
- 2) Plan the Best Location and Install Solar Street Lamp.
- 3) Allow Solar Street Lamp to Charge for 12-14 hours in dormant state.

### 1 PACK PACKAGE INCLUDES:

- User Manual & Instructions
- Solar panel and lamp 2 in 1
- 432 High-brightness LED beads
- 33000mAh Large capacity battery
- Sufficient Screw set for wall mounting or pole mounting
- Remote Controller
- Intelligent bluetooth module which can connect to mobile APP



## Specifications

|                  |  |
|------------------|--|
| Power            | 2000W                                      |
| Lumen            | 250000Lm                                   |
| LED Beads        | 432pcs high-brightness LED beads           |
| Battery          | 33000mAh                                   |
| Operation Mode   | 2 modes: 1. Remote Controller 2.Mobile App |
| Lighting Mode    | 3 modes: 1.Sensing 2.Automatic 3.Timing    |
| Waterproof level | IP67 Waterproof                            |
| Sensor distance  | 7-9 Meters                                 |
| Sensor time      | 15s  |