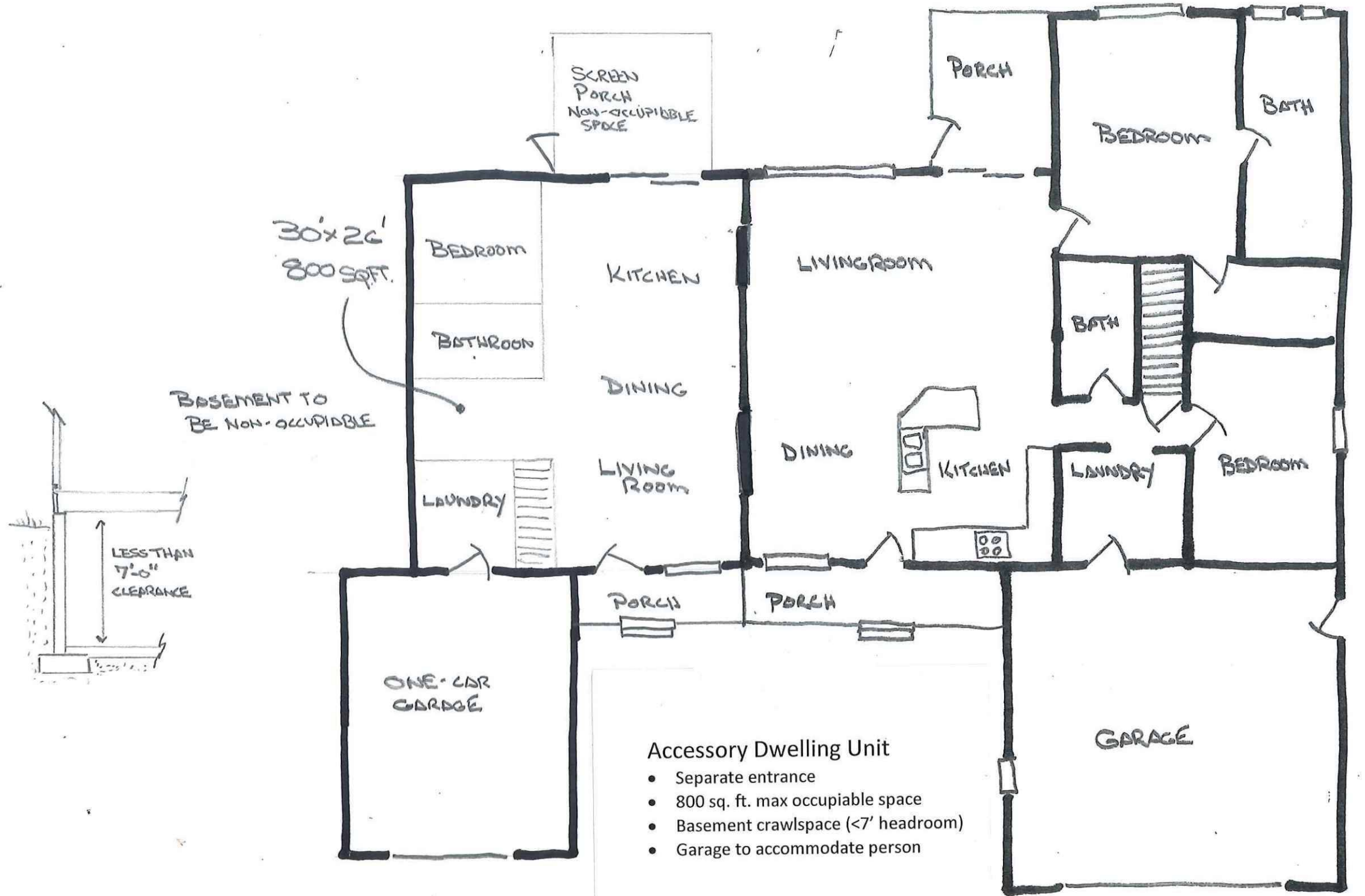


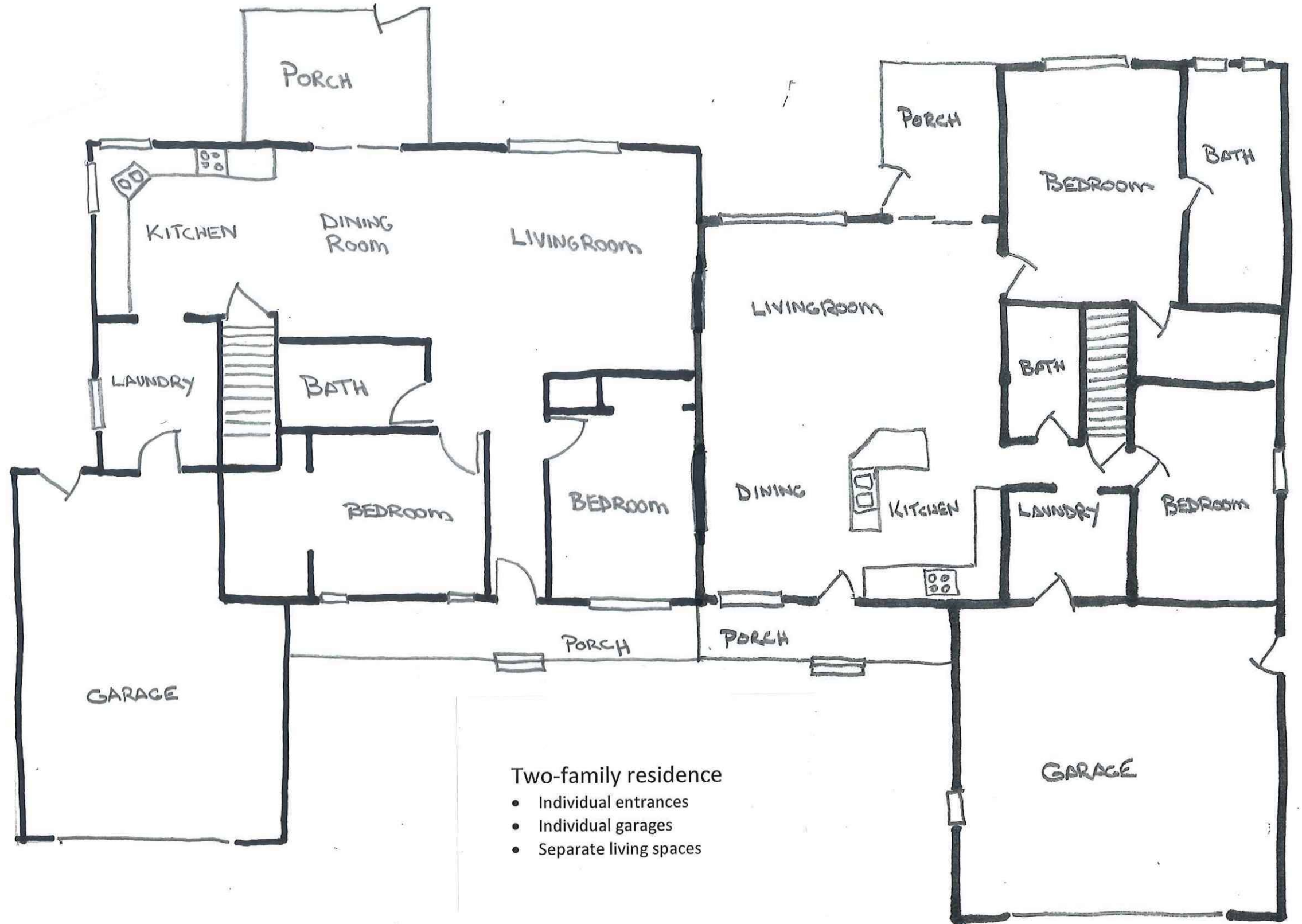
Single-family residence

- Common entrance
- Common garage
- Multiple kitchens allowed
- Occupied by one family or 5 persons unrelated





- Accessory Dwelling Unit**
- Separate entrance
 - 800 sq. ft. max occupiable space
 - Basement crawlspace (<7' headroom)
 - Garage to accommodate person



Two-family residence

- Individual entrances
- Individual garages
- Separate living spaces