

Final Plat - Revere Trails First Addition

Village of Windsor

Plat consists of 11 lots, 2 Outlots, 26.01 acres.

Parks - OL 7 and 8 shown as for open space and stormwater management.

Parkways -

Expressways - N/A

Major Highways - STH 19 to the south.

Airports - Dane County Regional

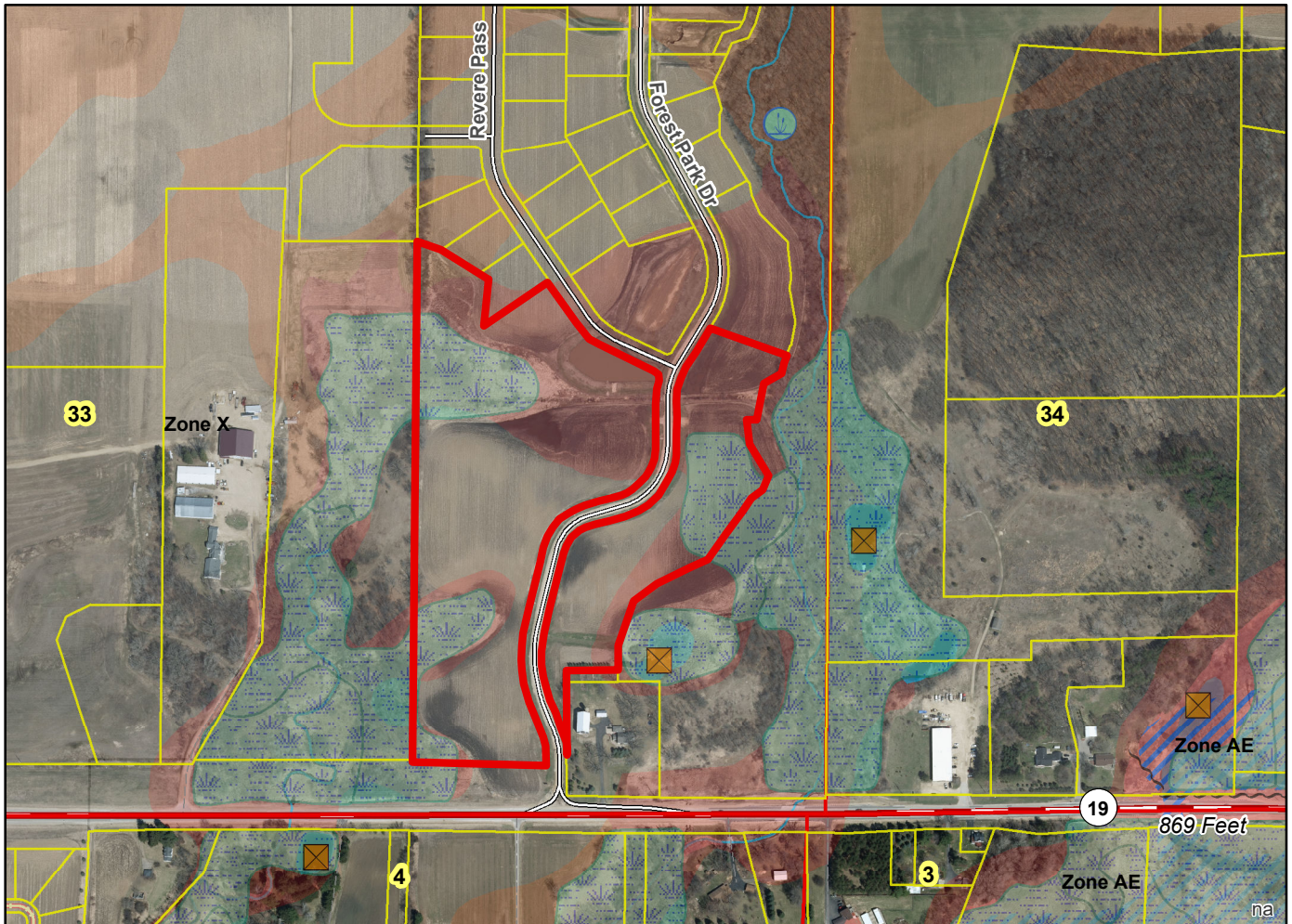
Drainage Channels - Drainage arrows shown on the plat.

Schools - established

Other Development - Stormwater easements shown throughout the plat.

Outlots 7 and 8 reserved for stormwater management.

Plats of subdivisions located in all other incorporated municipalities shall be submitted to the committee, as provided by section 236.12(2)(b) of the Wis. Stats., for the purpose of determining whether the committee has any objection to the plat. The basis for any objection to any such plat shall be that the plat conflicts with parks, parkways, expressways, major highways, airports, drainage channels, schools or other planned public developments.



Motion to certify with no objections: _____, Second: _____ Vote: _____