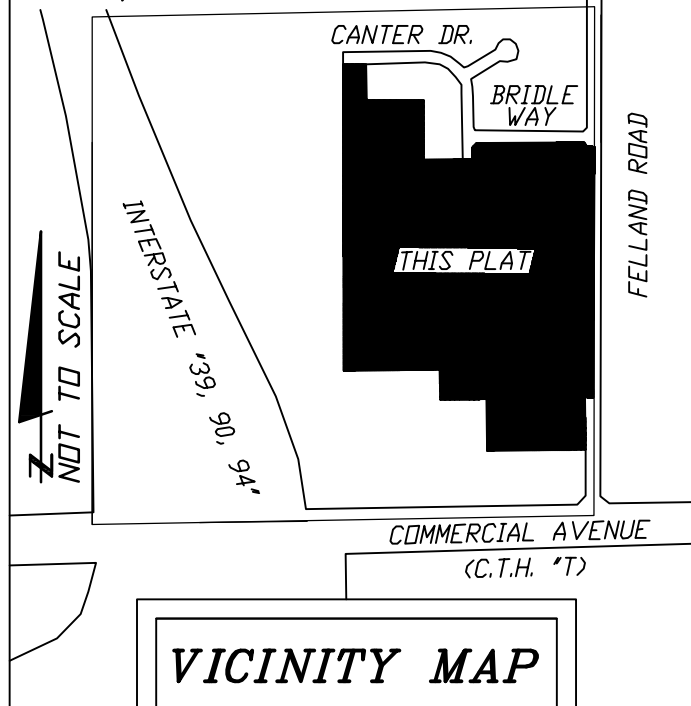
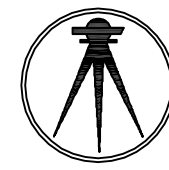


SW 1/4 SECTION 35-8-10



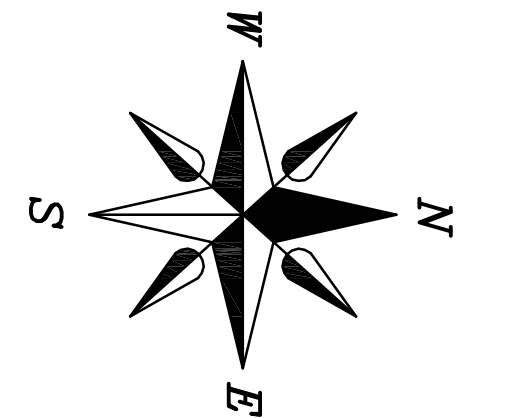
JANNAH VILLAGE

A parcel of land located part of the Northeast 1/4 of the Southwest 1/4 and part of the Southeast 1/4 of the Southwest 1/4 of Section 35, T8N, R10E, City of Madison, Dane County, Wisconsin. Including part of Lot 2 Certified Survey Map No. 1799, recorded in the Dane County Register of Deeds Office in Volume 7 of Certified Survey Maps of Dane County on Page 207 and 208, as Document No. 1443114.



WILLIAMSON SURVEYING & ASSOCIATES, LLC

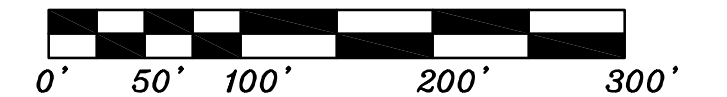
104 A WEST MAIN STREET, WAUNAKEE, WISCONSIN, 53597.
 NDA T. PRIEVE & CHRIS W. ADAMS
 PROFESSIONAL LAND SURVEYORS
 PHONE: 608-255-5705 FAX: 608-849-9760 WEB: WILLIAMSONSURVEYING.COM



WISCONSIN COORDINATE SYSTEM - DANE COUNTY

BEARINGS ARE REFERENCED TO THE EAST LINE OF THE SOUTHWEST 1/4 OF SECTION 35, T8N, R10E. LINE TO BEAR = N 00°49'57" E

SCALE 1" = 100'



LEGEND

- = SET 1-1/4"x18" REBAR, MINIMUM WEIGHT OF 4.17 LBS/LINEAR FOOT. ALL OTHER LOT AND OUTLOT CORNERS ARE MARKED WITH 3/4"x18" REBAR, MINIMUM WEIGHT OF 1.50 LBS/LINEAR FOOT.
- = FOUND 3/4" REBAR
- = FOUND 1 1/4" REBAR
- ⊗ = FOUND 1" PIPE
- ⊙ = FOUND DANE COUNTY SECTION CORNER (AS NOTED)
- <##> = RECORDED AS
- //// = NO VEHICULAR ACCESS
- 5.0 — = 5' WIDE PUBLIC BIKE PATH EASEMENT (UNLESS NOTED) SEE NOTE 5 ON SHEET 6.
- WIDTH NOTED — = PUBLIC UTILITY EASEMENT. SIZE NOTED ON PLAT. UTILITY EASEMENTS AS HEREIN SET FORTH ARE FOR THE USE OF PUBLIC BODIES AND PRIVATE PUBLIC UTILITIES HAVING THE RIGHT TO SERVE THE AREA.

NOTES:

- 1.) Distances, lengths and widths are measured to the nearest hundredth of a foot.
- 2.) See sheet 6 for curve table.
- 3.) See sheet 6 for all notes.



8-22-19
 6-5-19
 4-5-19
 3-25-19
 3-14-19
 12-19-18
 12-4-18
 JOB NO. 18W-94
 SHEET 1 OF 7

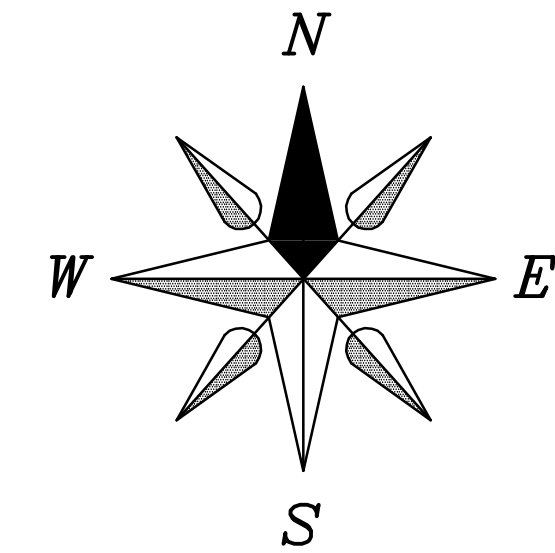
There are no objections to this plat with respect to Secs. 236.15, 236.16, 236.20 and 236.21(1) and (2), Wis. Stats. as provided by s. 236.12, Wis. Stats.

Certified _____, 20__

Department of Administration

JANNAH VILLAGE

A parcel of land located part of the Northeast 1/4 of the Southwest 1/4 and part of the Southeast 1/4 of the Southwest 1/4 of Section 35, T8N, R10E, City of Madison, Dane County, Wisconsin. Including part of Lot 2 Certified Survey Map No. 1799, recorded in the Dane County Register of Deeds Office in Volume 7 of Certified Survey Maps of Dane County on Page 207 and 208, as Document No. 1443114.



WISCONSIN COORDINATE SYSTEM - DANE COUNTY

BEARINGS ARE REFERENCED TO THE EAST LINE OF THE SOUTHWEST 1/4 OF SECTION 35, T8N, R10E. LINE TO BEAR = N 00°49'57" E

SCALE 1" = 50'



LEGEND

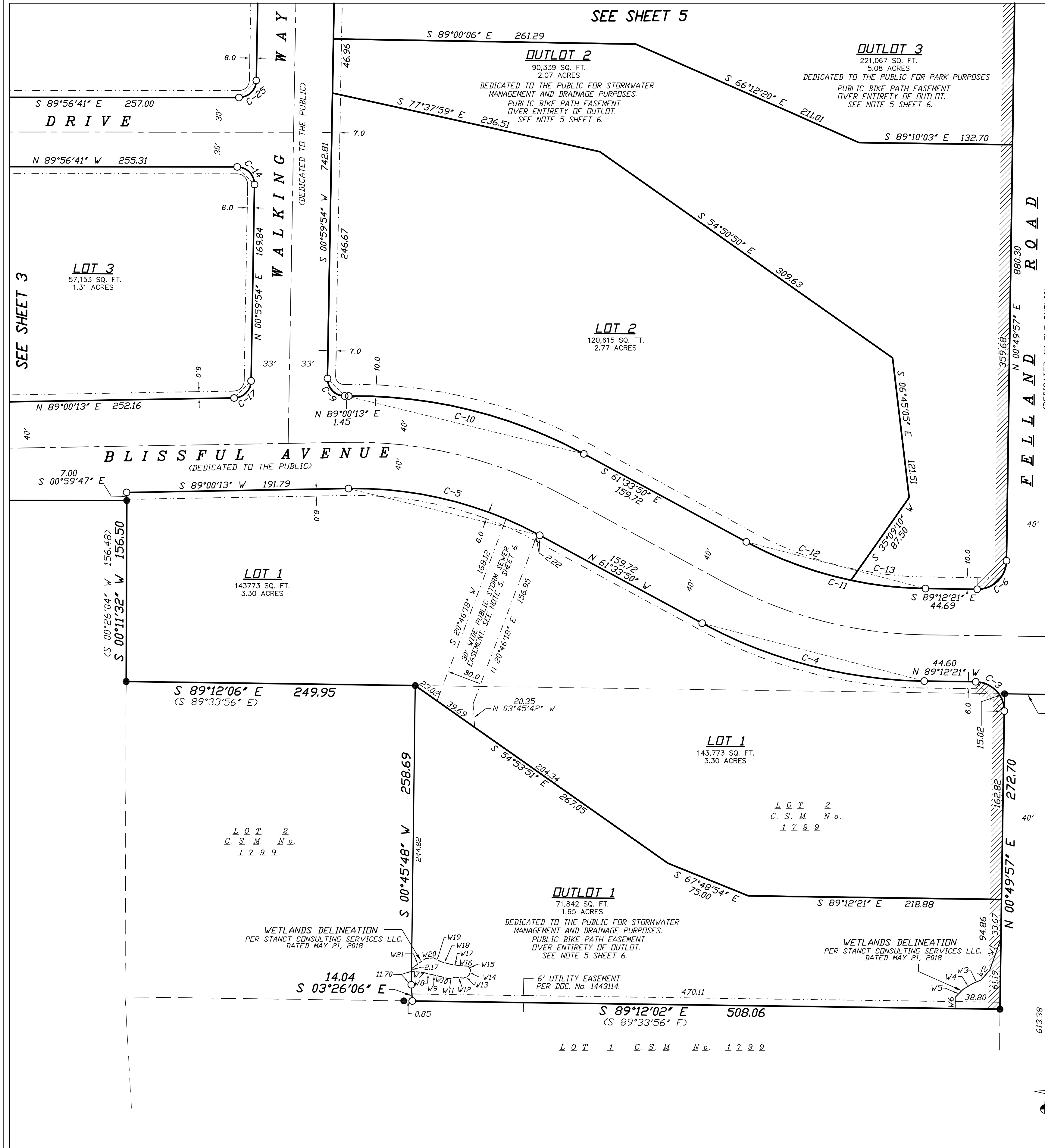
- = SET 1-1/4"x18" REBAR, MINIMUM WEIGHT OF 4.17 LBS./LINEAR FOOT. ALL OTHER LOT AND OUTLOT CORNERS ARE MARKED WITH 3/4"x18" REBAR, MINIMUM WEIGHT OF 1.50 LBS./LINEAR FOOT.
- = FOUND 3/4" REBAR
- = FOUND 1 1/4" REBAR
- ⊗ = FOUND 1" PIPE
- ⊙ = FOUND DANE COUNTY SECTION CORNER (AS NOTED)
- (##) = RECORDED AS
- ▨ = NO VEHICULAR ACCESS
- |— = 5' WIDE PUBLIC BIKE PATH EASEMENT (UNLESS NOTED) SEE NOTE 5 ON SHEET 6.
- |— = PUBLIC UTILITY EASEMENT. SIZE NOTED ON PLAT. UTILITY EASEMENTS AS HEREIN SET FORTH ARE FOR THE USE OF PUBLIC BODIES AND PRIVATE PUBLIC UTILITIES HAVING THE RIGHT TO SERVE THE AREA.

NOTES:

- Distances, lengths and widths are measured to the nearest hundredth of a foot.
- See sheet 6 for curve table.
- See sheet 6 for all notes.

WETLAND LINE TABLE

W1	S 19°27'34" W	29.10
W2	S 41°33'25" W	11.49
W3	S 67°01'35" W	7.89
W4	S 58°48'50" W	9.59
W5	S 45°01'31" W	9.62
W6	S 00°34'03" W	9.76
W7	S 83°25'32" E	10.93
W8	S 76°39'23" E	7.16
W9	S 76°40'57" E	7.37
W10	S 75°12'00" E	7.41
W11	N 76°43'32" E	5.73
W12	S 83°42'46" E	7.16
W13	N 63°31'24" E	5.21
W14	N 18°12'20" E	4.97
W15	N 33°33'08" W	3.92
W16	N 86°20'46" W	8.35
W17	N 80°03'36" W	8.68
W18	N 74°03'13" W	7.38
W19	N 61°53'47" W	6.73
W20	S 84°15'38" W	7.34
W21	S 53°48'08" W	14.45



SEE SHEET 5

SEE SHEET 3

SEE SHEET 6

SEE SHEET 7

SEE SHEET 8

SEE SHEET 9

SEE SHEET 10

SEE SHEET 11

SEE SHEET 12

SEE SHEET 13

SEE SHEET 14

SEE SHEET 15

SEE SHEET 16

SEE SHEET 17

SEE SHEET 18

SEE SHEET 19

SEE SHEET 20

SEE SHEET 21

SEE SHEET 22

SEE SHEET 23

SEE SHEET 24

SEE SHEET 25

SEE SHEET 26

SEE SHEET 27

SEE SHEET 28

SEE SHEET 29

SEE SHEET 30

SEE SHEET 31

SEE SHEET 32

SEE SHEET 33

SEE SHEET 34

SEE SHEET 35

SEE SHEET 36

SEE SHEET 37

SEE SHEET 38

SEE SHEET 39

SEE SHEET 40

SEE SHEET 41

SEE SHEET 42

SEE SHEET 43

SEE SHEET 44

SEE SHEET 45

SEE SHEET 46

SEE SHEET 47

SEE SHEET 48

SEE SHEET 49

SEE SHEET 50

SEE SHEET 51

SEE SHEET 52

SEE SHEET 53

SEE SHEET 54

SEE SHEET 55

SEE SHEET 56

SEE SHEET 57

SEE SHEET 58

SEE SHEET 59

SEE SHEET 60

SEE SHEET 61

SEE SHEET 62

SEE SHEET 63

SEE SHEET 64

SEE SHEET 65

SEE SHEET 66

SEE SHEET 67

SEE SHEET 68

SEE SHEET 69

SEE SHEET 70

SEE SHEET 71

SEE SHEET 72

SEE SHEET 73

SEE SHEET 74

SEE SHEET 75

SEE SHEET 76

SEE SHEET 77

SEE SHEET 78

SEE SHEET 79

SEE SHEET 80

SEE SHEET 81

SEE SHEET 82

SEE SHEET 83

SEE SHEET 84

SEE SHEET 85

SEE SHEET 86

SEE SHEET 87

SEE SHEET 88

SEE SHEET 89

SEE SHEET 90

SEE SHEET 91

SEE SHEET 92

SEE SHEET 93

SEE SHEET 94

SEE SHEET 95

SEE SHEET 96

SEE SHEET 97

SEE SHEET 98

SEE SHEET 99

SEE SHEET 100

SEE SHEET 101

SEE SHEET 102

SEE SHEET 103

SEE SHEET 104

SEE SHEET 105

SEE SHEET 106

SEE SHEET 107

SEE SHEET 108

SEE SHEET 109

SEE SHEET 110

SEE SHEET 111

SEE SHEET 112

SEE SHEET 113

SEE SHEET 114

SEE SHEET 115

SEE SHEET 116

SEE SHEET 117

SEE SHEET 118

SEE SHEET 119

SEE SHEET 120

SEE SHEET 121

SEE SHEET 122

SEE SHEET 123

SEE SHEET 124

SEE SHEET 125

SEE SHEET 126

SEE SHEET 127

SEE SHEET 128

SEE SHEET 129

SEE SHEET 130

SEE SHEET 131

SEE SHEET 132

SEE SHEET 133

SEE SHEET 134

SEE SHEET 135

SEE SHEET 136

SEE SHEET 137

SEE SHEET 138

SEE SHEET 139

SEE SHEET 140

SEE SHEET 141

SEE SHEET 142

SEE SHEET 143

SEE SHEET 144

SEE SHEET 145

SEE SHEET 146

SEE SHEET 147

SEE SHEET 148

SEE SHEET 149

SEE SHEET 150

SEE SHEET 151

SEE SHEET 152

SEE SHEET 153

SEE SHEET 154

SEE SHEET 155

SEE SHEET 156

SEE SHEET 157

SEE SHEET 158

SEE SHEET 159

SEE SHEET 160

SEE SHEET 161

SEE SHEET 162

SEE SHEET 163

SEE SHEET 164

SEE SHEET 165

SEE SHEET 166

SEE SHEET 167

SEE SHEET 168

SEE SHEET 169

SEE SHEET 170

SEE SHEET 171

SEE SHEET 172

SEE SHEET 173

SEE SHEET 174

SEE SHEET 175

SEE SHEET 176

SEE SHEET 177

SEE SHEET 178

SEE SHEET 179

SEE SHEET 180

SEE SHEET 181

SEE SHEET 182

SEE SHEET 183

SEE SHEET 184

SEE SHEET 185

SEE SHEET 186

SEE SHEET 187

SEE SHEET 188

SEE SHEET 189

SEE SHEET 190

SEE SHEET 191

SEE SHEET 192

SEE SHEET 193

SEE SHEET 194

SEE SHEET 195

SEE SHEET 196

SEE SHEET 197

SEE SHEET 198

SEE SHEET 199

SEE SHEET 200

SEE SHEET 201

SEE SHEET 202

SEE SHEET 203

SEE SHEET 204

SEE SHEET 205

SEE SHEET 206

SEE SHEET 207

SEE SHEET 208

SEE SHEET 209

SEE SHEET 210

SEE SHEET 211

SEE SHEET 212

SEE SHEET 213

SEE SHEET 214

SEE SHEET 215

SEE SHEET 216

SEE SHEET 217

SEE SHEET 218

SEE SHEET 219

SEE SHEET 220

SEE SHEET 221

SEE SHEET 222

SEE SHEET 223

SEE SHEET 224

SEE SHEET 225

SEE SHEET 226

SEE SHEET 227

SEE SHEET 228

SEE SHEET 229

SEE SHEET 230

SEE SHEET 231

SEE SHEET 232

SEE SHEET 233

SEE SHEET 234

SEE SHEET 235

SEE SHEET 236

SEE SHEET 237

SEE SHEET 238

SEE SHEET 239

SEE SHEET 240

SEE SHEET 241

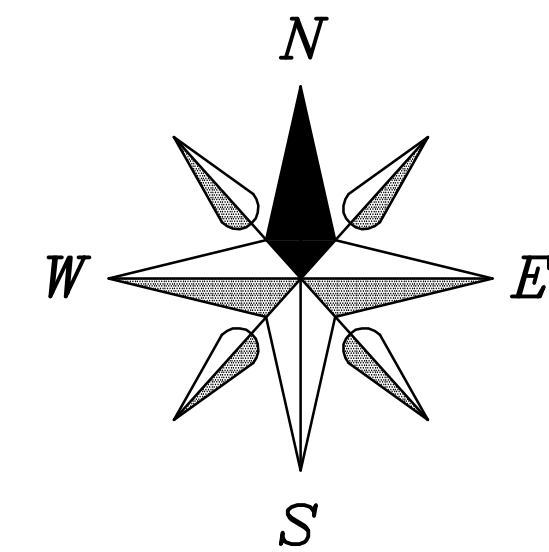
SEE SHEET 242

SEE SHEET 243

SEE SHEET 244

JANNAH VILLAGE

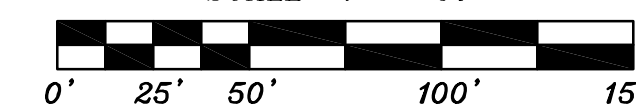
A parcel of land located part of the Northeast 1/4 of the Southwest 1/4 and part of the Southeast 1/4 of the Southwest 1/4 of Section 35, T8N, R10E, City of Madison, Dane County, Wisconsin. Including part of Lot 2 Certified Survey Map No. 1799, recorded in the Dane County Register of Deeds Office in Volume 7 of Certified Survey Maps of Dane County on Page 207 and 208, as Document No. 1443114.



WISCONSIN COORDINATE SYSTEM - DANE COUNTY

BEARINGS ARE REFERENCED TO THE EAST LINE OF THE SOUTHWEST 1/4 OF SECTION 35, T8N, R10E. LINE TO BEAR = N 00°49'57" E

SCALE 1" = 50'



LEGEND

○ = SET 1-1/4"x18" REBAR, MINIMUM WEIGHT OF 4.17 LBS/LINEAR FOOT. ALL OTHER LOT AND OUTLOT CORNERS ARE MARKED WITH 3/4"x18" REBAR, MINIMUM WEIGHT OF 1.50 LBS/LINEAR FOOT.

● = FOUND 3/4" REBAR

● = FOUND 1 1/4" REBAR

⊗ = FOUND 1" PIPE

⊙ = FOUND DANE COUNTY SECTION CORNER (AS NOTED)

(##) = RECORDED AS

//// = NO VEHICULAR ACCESS

—|— = 5' WIDE PUBLIC BIKE PATH EASEMENT (UNLESS NOTED) SEE NOTE 5 ON SHEET 6.

—|— = PUBLIC UTILITY EASEMENT. SIZE NOTED ON PLAT. UTILITY EASEMENTS AS HEREIN SET FORTH ARE FOR THE USE OF PUBLIC BODIES AND PRIVATE PUBLIC UTILITIES HAVING THE RIGHT TO SERVE THE AREA.

NOTES:

- Distances, lengths and widths are measured to the nearest hundredth of a foot.
- See sheet 6 for curve table.
- See sheet 6 for all notes.

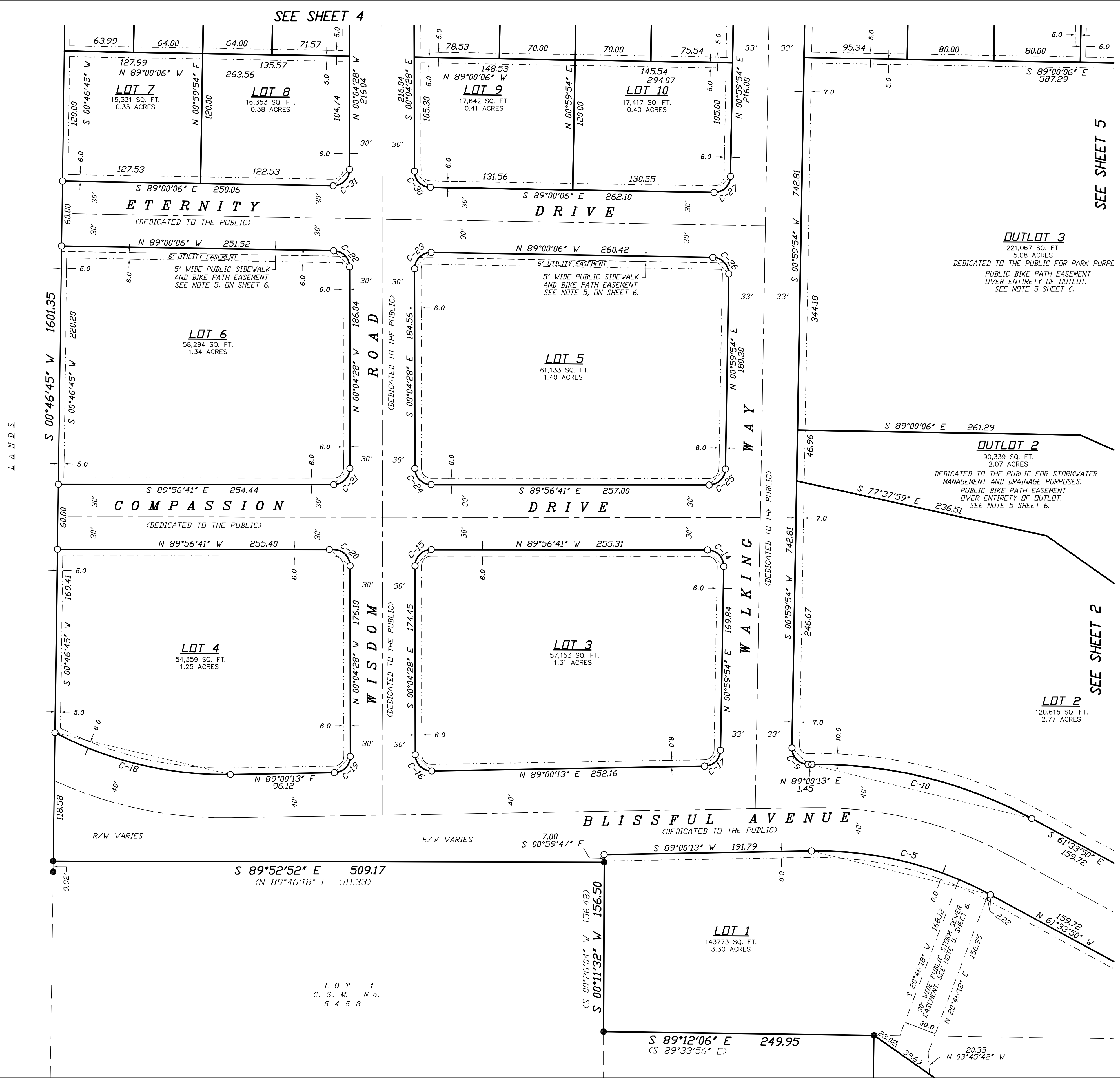
There are no objections to this plat with respect to Secs. 236.15, 236.16, 236.20 and 236.21(1) and (2), Wis. Stats. as provided by s. 236.12, Wis. Stats.

Certified _____, 20__

Department of Administration



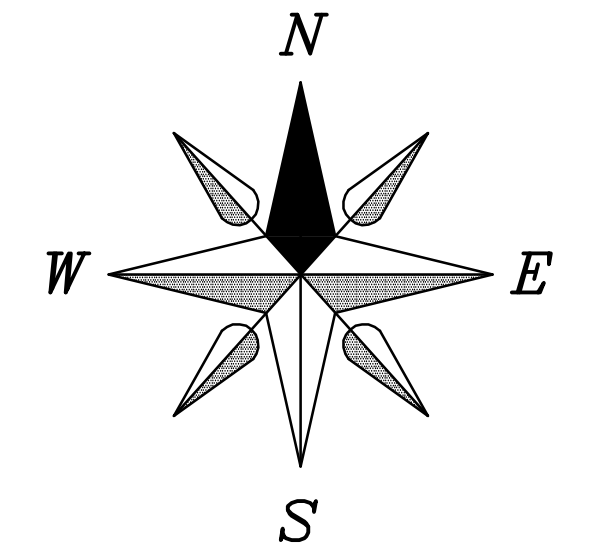
8-22-19
6-5-19
4-2-19
3-25-19
3-14-19
12-19-18
12-4-18
JOB NO. 18W-94
SHEET 3 OF 7



LOT 1
C.S.M. No.
5458

JANNAH VILLAGE

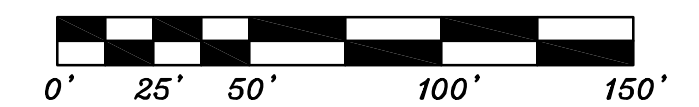
A parcel of land located part of the Northeast 1/4 of the Southwest 1/4 and part of the Southeast 1/4 of the Southwest 1/4 of Section 35, T8N, R10E, City of Madison, Dane County, Wisconsin, including part of Lot 2 Certified Survey Map No. 1799, recorded in the Dane County Register of Deeds Office in Volume 7 of Certified Survey Maps of Dane County on Page 207 and 208, as Document No. 1443114.



WISCONSIN COORDINATE SYSTEM - DANE COUNTY

BEARINGS ARE REFERENCED TO THE EAST LINE OF THE SOUTHWEST 1/4 OF SECTION 35, T8N, R10E, LINE TO BEAR = N 00°49'57" E

SCALE 1" = 50'



LEGEND

- = SET 1-1/4"x18" REBAR, MINIMUM WEIGHT OF 4.17 LBS./LINEAR FOOT. ALL OTHER LOT AND OUTLOT CORNERS ARE MARKED WITH 3/4"x18" REBAR, MINIMUM WEIGHT OF 1.50 LBS./LINEAR FOOT.
- = FOUND 3/4" REBAR
- = FOUND 1 1/4" REBAR
- ⊗ = FOUND 1" PIPE
- ⊙ = FOUND DANE COUNTY SECTION CORNER (AS NOTED)
- (##) = RECORDED AS
- //// = NO VEHICULAR ACCESS
- |— = 5' WIDE PUBLIC BIKE PATH EASEMENT (UNLESS NOTED) SEE NOTE 5 ON SHEET 6.
- |— = PUBLIC UTILITY EASEMENT. SIZE NOTED ON PLAT. UTILITY EASEMENTS AS HEREIN SET FORTH ARE FOR THE USE OF PUBLIC BODIES AND PRIVATE PUBLIC UTILITIES HAVING THE RIGHT TO SERVE THE AREA.

NOTES:

- 1.) Distances, lengths and widths are measured to the nearest hundredth of a foot.
- 2.) See sheet 6 for curve table.
- 3.) See sheet 6 for all notes.

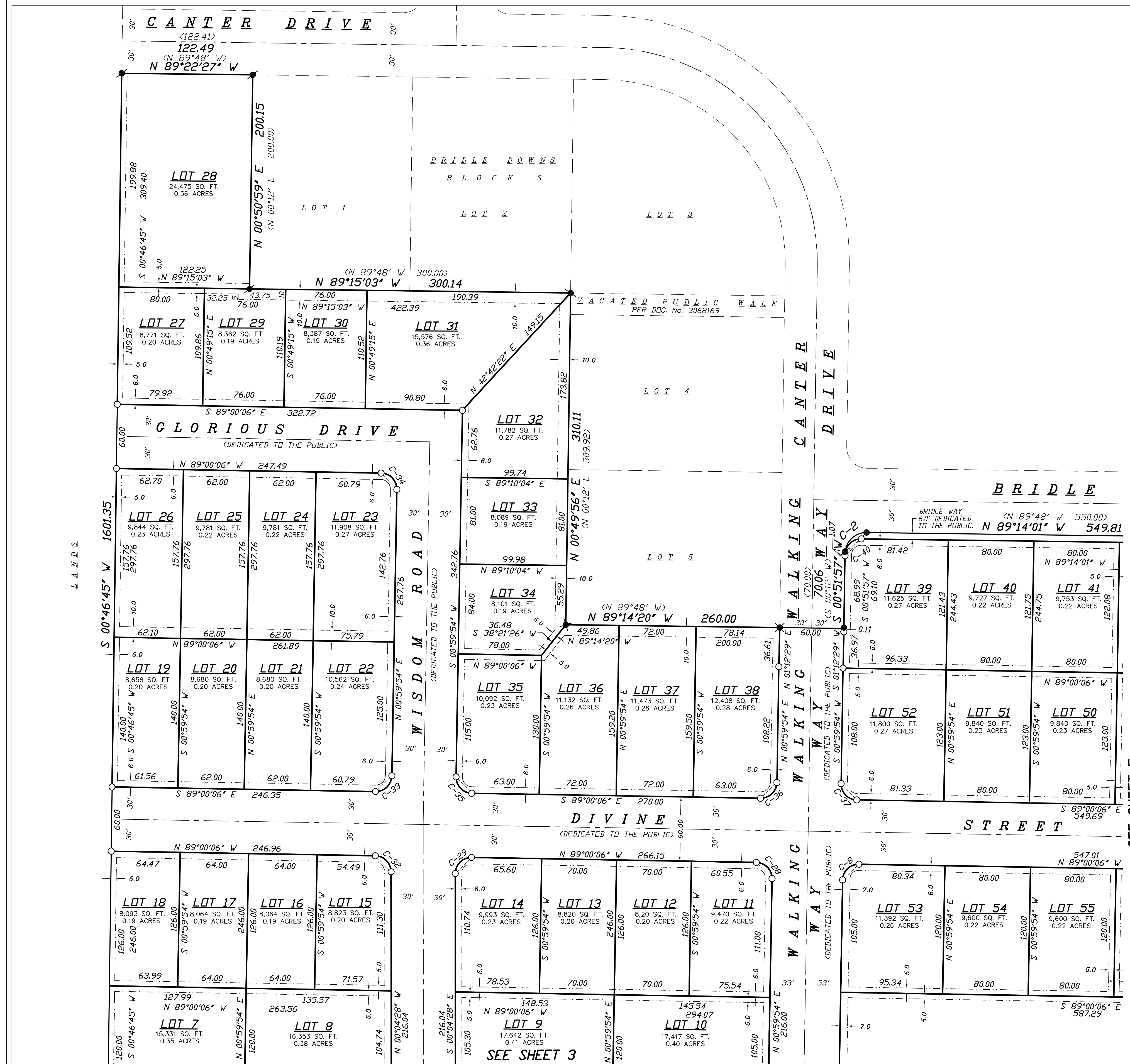
There are no objections to this plat with respect to Secs. 236.15, 236.16, 236.20 and 236.21(1) and (2), Wis. Stats. as provided by s. 236.12, Wis. Stats.

Certified _____, 20__

Department of Administration



8-22-19
6-5-19
4-2-19
3-25-19
3-14-19
12-19-18
12-4-18
JOB NO. 18W-94
SHEET 4 OF 7



SEE SHEET 5

SEE SHEET 3

JANNAH VILLAGE

A parcel of land located part of the Northeast 1/4 of the Southwest 1/4 and part of the Southeast 1/4 of the Southwest 1/4 of Section 35, T8N, R10E, City of Madison, Dane County, Wisconsin. Including part of Lot 2 Certified Survey Map No. 1799, recorded in the Dane County Register of Deeds Office in Volume 7 of Certified Survey Maps of Dane County on Page 207 and 208, as Document No. 1443114.

NOTES CONTINUED:

4.) All lots within this plat are subject to public easement for drainage purposes which shall be a minimum of 5 feet in width measured from the property line to the interior of each lot except that the easements shall be 12 feet in width on the perimeter of the plat. For purposes of two (2) or more lots combined for a single development site, or where two (2) or more lots have a shared driveway agreement, the public easement for drainage purposes shall be a minimum of five (5) feet in width and shall be measured only from the exterior property lines of the combined lots that create a single development site, or have a shared driveway agreement, except that the easement shall be twelve (12) feet in width along the perimeter of the plat. Easements shall not be required on property lines shared with greenways or public streets. No buildings, driveways, or retaining walls shall be placed in any easement for drainage purposes. Fences may be placed in the easement only if they do not impede the anticipated flow of water.

The intra-block drainage easement shall be graded with the construction of each principle structure in accordance with the approved storm water drainage plan on file with the City Engineer and the Zoning Administrator, as amended in accordance with the Madison General Ordinances.

NOTE: In the event of a city of Madison plan commission and/or common council approved redvision of a previously subdivided property, the underlying public easements for drainage purposes are released and replaced by those required and created by the current approved subdivision.

5.) Public Easement Terms and Conditions:

Public Storm Sewer Easements:

Creation of Easement Rights:

A permanent easement over, across and within the Easement Area is established, memorialized, reserved by, granted, conveyed, transferred and assigned to the City of Madison for the uses and purposes hereinafter set forth. The Easement Area may be used by the City of Madison for public underground storm sewer purposes. City of Madison and its employees, agents and contractors shall have the right to construct, install, maintain, operate, repair, replace and reconstruct the Storm Sewer Facilities with the Easement Area. City of Madison shall have further right of ingress and egress to and from the Easement Area in order to exercise its right s and privileges hereunder, and to cut and remove trees, vegetation and other impediments in the Easement Area which may obstruct or interfere with the actual or potential use of the Easement Area for the foregoing purposes.

Property Restoration:

City of Madison shall repair and damage caused to any pavement, concrete or turf located within the Easement Area and/or the Property as a result of the use of the Easement Area by or on behalf of the City of Madison as provided herein. Following completion of any excavation work, City of Madison shall promptly restore the area affected by the work to the original grade and surface condition including the repair or replacement of pavement, concrete and turf.

Limitations on Use of Easement Area:

The owner of the Property shall have the right to use the Easement Area for any purpose, provided such use shall no interfere with the easement rights of the City of Madison hereunder, No buildings or structures or fences unrelated to the Storm Sewer Facilities shall be constructed in and no grade change shall be made to the Easement Area without the written consent of the City of Madison's Engineering Division City Engineer.

Binding Effect:

This Easement shall run with the land described herein and shall be binding upon the owners of the Property, and their successors in interest.

Release of Rights to Easements Created by Plat:

Any release of rights that were placed on platted land which was required by a public body or which names a public body or public utility as grantee shall be released by recording a separate easement release document with the Dane County Register of Deeds in accordance with ss236.293.

Public Sidewalk and Bike Path Easement:

Creation of Easement Rights:

A permanent easement over, across and within the Easement Area is established, memorialized, reserved by, granted, conveyed, transferred and assigned to the City of Madison for the uses and purposes hereinafter set forth. The Easement Area may be used by the City of Madison for public sidewalk and bike path purposes. City of Madison and its employees, agents and contractors shall have the right to construct, in stall, maintain, operate, repair, replace and reconstruct the public sidewalk and bike path within the Easement Area. City of Madison shall have the further right of ingress and egress to and from the Easement Area in order to exercise its right and privileges hereunder, and to cut and remove trees, vegetation and other impediments in the Easement Area which may obstruct or interfere with the actual or potential use of the Easement Area for the foregoing purposes.

Property Restoration:

City of Madison shall repair and damage caused to any pavement, concrete or turf located within the Easement Area and/or the Property as a result of the use of the Easement Area by or on behalf of the City of Madison as provided herein. Following completion of any excavation work, City of Madison shall promptly restore the area affected by the work to the original grade and surface condition including the repair or replacement of pavement, concrete and turf.

Limitations on Use of Easement Area:

The owner of the Property shall have the right to use the Easement Area for any purpose, provided such use shall no interfere with the easement rights of the City of Madison hereunder, No buildings or structures or fences unrelated to the Storm Sewer Facilities shall be constructed in and no grade change shall be made to the Easement Area without the written consent of the City of Madison's Engineering Division City Engineer.

Binding Effect:

This Easement shall run with the land described herein and shall be binding upon the owners of the Property, and their successors in interest.

Release of Rights to Easements Created by Plat:

Any release of rights that were placed on platted land which was required by a public body or which names a public body or public utility as grantee shall be released by recording a separate easement release document with the Dane County Register of Deeds in accordance with ss236.293.

6.) Lots/buildings within this subdivision are subject to impact fees that are due and payable at the time building permit(s) are issued.

7.) No driveway shall be constructed that interferes with the orderly operation of the pedestrian walkway.

8.) Lot 2 is restricted to 16 density units an acre consistent with the density recommendation for development in Housing Mix 2 in the Northeast Neighborhoods Development Plan.

CURVE TABLE:

C-#	RADIUS	CHORD BEARING	ARC	DELTA	TANGENT BEARING
C-1	20.00	(N 44°48'00" W 28.28) N 44°13'00" W 28.55	31.79	91°04'13"	N 01°19'06" E
C-2	20.00	(S 45°12'00" W 28.28) S 45°38'17" W 28.08	31.13	89°10'54"	N 89°46'16" W
C-3	25.00	N 44°11'12" W 35.37	39.29	90°02'18"	N 00°49'57" E
C-4	415.00	N 75°23'05" W 198.28	200.21	27°38'31"	N 89°12'21" W
C-5	335.00	N 76°16'48" W 170.20	172.09	29°25'58"	N 61°33'50" W
C-6	25.00	N 45°48'48" E 35.34	39.25	89°57'42"	S 89°12'21" E
C-7	25.00	N 44°05'04" W 35.30	39.20	89°50'03"	N 00°49'57" E
C-8	15.00	S 45°59'54" W 21.21	23.56	90°00'00"	N 89°00'06" W
C-9	15.00	S 44°59'56" E 21.58	24.08	91°59'42"	S 00°59'54" W
C-10	415.00	S 76°16'48" E 210.85	213.18	29°25'58"	N 89°00'13" E
C-11	335.00	S 75°23'05" E 160.06	161.62	27°38'31"	S 61°33'50" E
C-12	335.00	S 69°49'39" E 96.30	96.63	16°31'39"	S 61°33'50" E
C-13	335.00	S 83°38'55" E 64.88	64.98	11°06'52"	S 78°05'29" E
C-14	15.00	N 44°28'23" W 21.39	23.81	90°56'36"	N 00°59'54" E
C-15	15.00	S 44°59'25" W 21.24	23.60	90°07'47"	N 89°56'41" W
C-16	15.00	S 45°32'08" E 21.38	23.80	90°55'19"	S 00°04'28" E
C-17	15.00	N 45°00'04" E 20.84	23.04	88°00'18"	N 89°00'13" E
C-18	335.00	S 76°35'48" E 166.62	168.39	28°47'57"	S 62°11'49" E
C-19	15.00	N 44°27'52" E 21.04	23.32	89°04'41"	N 89°00'13" E
C-20	15.00	N 45°00'35" W 21.19	23.53	89°52'13"	N 00°04'28" W
C-21	15.00	N 44°59'25" E 21.24	23.60	90°07'47"	S 89°56'41" E
C-22	15.00	N 44°32'17" W 21.01	23.28	88°55'37"	N 00°04'28" W
C-23	15.00	S 45°27'43" W 21.41	23.84	91°04'23"	N 89°00'06" W
C-24	15.00	S 45°00'35" E 21.19	23.53	89°52'13"	S 00°04'28" E
C-25	15.00	N 45°31'37" E 21.04	23.32	89°03'24"	S 89°56'41" E
C-26	15.00	N 44°00'06" W 21.21	23.56	90°00'00"	N 00°59'54" E
C-27	15.00	N 45°59'54" E 21.21	23.56	90°00'00"	S 89°00'06" E
C-28	15.00	N 44°00'06" W 21.21	23.56	90°00'00"	N 00°59'54" E
C-29	15.00	S 45°27'43" W 21.41	23.84	91°04'23"	N 89°00'06" W
C-30	15.00	S 44°32'17" E 21.01	23.28	88°55'37"	S 00°04'28" E
C-31	15.00	N 45°27'43" E 21.41	23.84	91°04'23"	S 89°00'06" E
C-32	15.00	N 44°32'17" W 21.01	23.28	88°55'37"	N 00°04'28" W
C-33	15.00	N 45°59'54" E 21.21	23.56	90°00'00"	S 89°00'06" E
C-34	15.00	N 44°00'06" W 21.21	23.56	90°00'00"	N 00°59'54" E
C-35	15.00	S 44°00'06" E 21.21	23.56	90°00'00"	S 00°59'54" W
C-36	15.00	N 45°59'54" E 21.21	23.56	90°00'00"	S 89°00'06" E
C-37	15.00	S 44°00'06" E 21.21	23.56	90°00'00"	S 00°59'54" W
C-38	25.00	N 45°54'56" E 35.41	39.34	90°09'57"	S 89°00'06" E
C-39	25.00	N 44°12'02" W 35.38	39.30	90°03'59"	N 00°49'57" E
C-40	15.00	S 45°48'58" W 21.19	23.54	89°54'02"	N 89°14'01" W

8-22-19
6-5-19
4-2-19
5-25-19
3-14-19
12-19-18
12-4-18
JOB NO. 18W-94
SHEET 6 OF 7

There are no objections to this plat with respect to Secs. 236.15, 236.16, 236.20 and 236.21(1) and (2), Wis. Stats. as provided by s. 236.12, Wis. Stats.

Certified _____, 20____

Department of Administration



JANNAH VILLAGE

A parcel of land located part of the Northeast 1/4 of the Southwest 1/4 and part of the Southeast 1/4 of the Southwest 1/4 of Section 35, T8N, R10E, City of Madison, Dane County, Wisconsin. Including part of Lot 2 Certified Survey Map No. 1799, recorded in the Dane County Register of Deeds Office in Volume 7 of Certified Survey Maps of Dane County on Page 207 and 208, as Document No. 1443114.

DESCRIPTION:

Noa T. Prieve, Professional Land Surveyor S-2499 do hereby certify that in full compliance with provisions of Chapter 236 of the Wisconsin State Statutes and the Subdivision Regulations of the City of Madison, and under the direction of the owners listed below, I have surveyed, divided and mapped 'Jannah Village' and that such plat correctly represents all the exterior boundaries and the subdivision of the land surveyed as described as follows:

A parcel of land located part of the Northeast 1/4 of the Southwest 1/4 and part of the Southeast 1/4 of the Southwest 1/4 of Section 35, T8N, R10E, City of Madison, Dane County, Wisconsin. Including part of Lot 2 Certified Survey Map No. 1799, recorded in the Dane County Register of Deeds Office in Volume 7 of Certified Survey Maps of Dane County on Page 207 and 208, as Document No. 1443114; being more particularly described as follows:

Commencing at the South 1/4 corner of Section 35; thence N 00°49'57" E along the East line of the Southwest 1/4, 613.38 feet to the point of beginning.

Thence continue N 00°49'57" E, 1312.45 feet to a Southeast corner of Bridle Downs Plat; thence along said Bridle Downs Plat for the next 10 courses N 89°12'51" W, 39.32 feet; thence along an arc of a curve concaved southwesterly having a radius of 20.00 feet and a long chord bearing of N 44°13'00" W, 28.55 feet; thence N 89°14'01" W, 549.81 feet; thence along an arc of a curve concaved southeasterly having a radius 20.00 feet and a long chord bearing of S 45°38'17" W, 218.08 feet; thence S 00°51'57" W, 70.06 feet; thence N 89°14'20" W, 260.00 feet; thence N 00°49'56" E, 310.11 feet; thence N 89°15'03" W, 300.14 feet; thence N 00°50'59" E, 200.15 feet; thence N 89°22'27" W, 122.49 feet; thence S 00°46'45" W, 1601.35 feet to the Northwest corner of Lot 1 Certified Survey Map No. 5458; thence along said Lot 1 for the next two course N 89°00'13" E, 509.38 feet; thence S 00°11'32" W, 156.50 feet to the Northwest corner of said Lot 2 Certified Survey Maps No. 1799; thence S 89°12'06" E along the North line of said Lot 2, 249.95 feet; thence S 00°45'48" W, 258.69 feet; thence S 03°26'06" E, 14.04 feet to the South line of said Lot 2; thence along said Lot 2 for the next courses S 89°12'02" E, 508.06 feet; thence N 00°49'57" E, 272.70 feet; thence S 89°12'06" E, 40.00 feet to the point of beginning. This parcels contains 1,899,906 sq. ft. or 43.62 acres thereof.

Date _____
Noa T. Prieve S-2499
Professional Land Surveyor

LIMITED LIABILITY COMPANY OWNERS' CERTIFICATE:

Simply Homes Madison LLC, a Limited Liability Company duly organized and existing under and by virtue of the laws of the State of Wisconsin, as managing member, does hereby certify that said Company caused the land described on this plat to be surveyed, divided, mapped and dedicated as represented on this plat of Jannah Village, does further certify that this plat is required by s. 236.10 or 236.12 to be submitted to the following for approval or objection:

Department of Administration
Common Council, City of Madison
Dane County Zoning and Land Regulation Committee

IN WITNESS WHEREOF, Simply Homes Madison LLC, has caused these presents to be signed by Lindsay Hagens, its managing member, and its company seal to be hereunto affixed on this _____ day of _____, 20____.

Simply Homes Madison LLC, a Limited Liability Company

By: _____
Lindsay Hagens, Managing Member

STATE OF WISCONSIN)
DANE COUNTY) SS

Personally came before me this _____ day of _____, 20____ the above named Lindsay Hagens, the managing member of the above Limited Liability Company, to me known to be the person who executed the foregoing instrument, and to me known to be such managing member of said Limited Liability Company, and acknowledge that they executed the foregoing instrument as such Member as the deed of said company, by its authority.

_____ County, Wisconsin. _____ Notary Public

My commission expires _____
_____ Print Name

CONSENT OF CORPORATE MORTGAGEE:

Fortifi Bank, a corporation duly organized and existing under and by virtue of the laws of the State of Wisconsin, mortgagee of the above described land, does hereby consent to the surveying, dividing mapping and dedication of the land described on this plat, and does hereby consent to the above certificate of Simply Homes Madison LLC., owner.

IN WITNESS WHEREOF, the said Fortifi Bank has caused these presents to be signed by David Mills, its Senior Vice President Business Banking at Waunakee, Wisconsin, and its company seal to be hereunto affixed on this _____ day of _____, 20____.

In the presence of:
Fortifi Bank

David Mills - Senior Vice President Business Banking

STATE OF WISCONSIN)
DANE COUNTY) SS

Personally came before me this _____ day of _____, 20____ the above named David Mills of the above corporation, to me known to be the person who executed the foregoing instrument, and to me known to be such Senior Vice President Business Banking of said corporation, and acknowledge that they executed the foregoing instrument as such officer as the deed of said corporation, by its authority.

_____ County, Wisconsin. _____ Print Name

My commission expires _____
_____ Notary Public

CITY OF MADISON COMMON COUNCIL CERTIFICATE:

Resolved that the plat of 'Jannah Village' located in the City of Madison, was hereby approved by Enactment Number _____, File I.D. Number _____, adopted the ____ day of _____, 20____, and that said Enactment further provided for the acceptance of these lands dedicated and rights conveyed by said plat to the City of Madison for public use..

Date this ____ day of _____, 20____.

Maribeth Witzel-Behl, City Clerk, City of Madison, Dane County, Wisconsin

CITY OF MADISON PLAN COMMISSION CERTIFICATE:

Approved for recording per the secretary of the City of Madison Plan Commission.

_____, Secretary of Plan Commission
City of Madison, Dane County, Wisconsin

CITY OF MADISON TREASURER'S CERTIFICATE:

I, David M. Gawenda, being the duly appointed, qualified and acting finance director of the City of Madison, Dane County, Wisconsin, do hereby certify that in accordance with the records in my office, there are no unpaid taxes or unpaid special assessments affecting any of the lands included in the plat of Jannah Village Subdivision as of this ____ day of _____, 20____.

David M. Gawenda, City Treasurer, City of Madison, Dane County, Wisconsin.

COUNTY TREASURER'S CERTIFICATE:

I, Adam Gallagher, being the duly elected, qualified and acting treasurer of the County of Dane, do hereby certify that records in my office show no unredeemed tax sales and no unpaid taxes or unpaid special assessments as of _____, 20____, on any of the land included in the plat of Jannah Village Subdivision as of this ____ day of _____, 20____.

Date _____ Adam Gallagher, Dane County Treasurer

REGISTER OF DEEDS:

Received for the Recording this ____ day of _____, 20____, at _____ O'clock ____M. and recorded in Volume _____ of Plats of Dane County on page(s) _____, as Document No. _____

Kristi Chlebowski
Register of Deeds of Dane County

There are no objections to this plat with respect to Secs. 236.15, 236.16, 236.20 and 236.21(1) and (2), Wis. Stats. as provided by s. 236.12, Wis. Stats.

Certified _____, 20____

Department of Administration



8-22-19
6-5-19
4-2-19
3-25-19
3-14-19
12-19-18
12-4-18
JOB NO. 18W-94
SHEET 7 OF 7