



WISCONSIN
HISTORICAL
SOCIETY

CULTURAL RESOURCE PLANNING IN DANE COUNTY



Jason Tish

Certified Local Government Coordinator

Preservation Education Coordinator

Wisconsin State Historic Preservation Office

jason.tish@wisconsinhistory.org – 608-264-6512



WISCONSIN
HISTORICAL
SOCIETY

CULTURAL RESOURCE PLANNING IN DANE COUNTY

How we know what we know (properties in our database:

- Fitchburg - 2019
- Mazomanie - 2001
- Madison – various surveys
- Middleton - 1996
- Monona - 2019
- Oregon - 2004
- Stoughton – 1993
- Dane Co. hamlets – 2002
- Compliance surveys





WISCONSIN
HISTORICAL
SOCIETY

CULTURAL RESOURCE PLANNING IN DANE COUNTY

What we know - properties in our database:

- 13,473 in all of Dane County
- - 11,762 in cities or villages
- **1,711** outside cities/villages
- -1,655 in 31 unincorporated hamlets
- 56 in rural Dane County

1676 known archaeological sites





WISCONSIN
HISTORICAL
SOCIETY

CULTURAL RESOURCE PLANNING IN DANE COUNTY

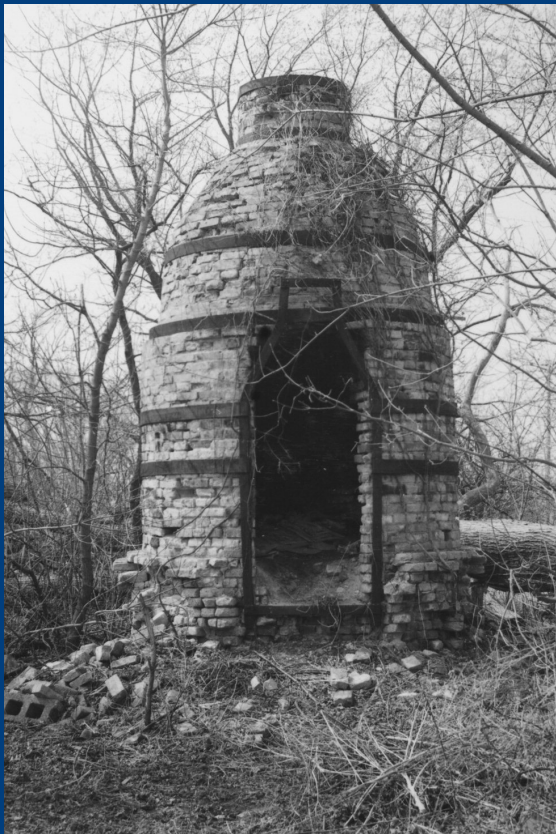
What we know (Listed in NRHP, eligible for tax credits):

- 271 in all of Dane County
- - 230 in cities or villages
- 41 outside cities/villages (hamlets and rural)



WISCONSIN
HISTORICAL
SOCIETY

CULTURAL RESOURCE PLANNING IN DANE COUNTY



Pottery kiln, 1888
Albion township
Surveyed in 1977





WISCONSIN
HISTORICAL
SOCIETY

CULTURAL RESOURCE PLANNING IN DANE COUNTY



Italianate farmhouse, ca.1870
Albion township
Surveyed in 2002





WISCONSIN
HISTORICAL
SOCIETY

CULTURAL RESOURCE PLANNING IN DANE COUNTY



Vernacular farmhouse, ca.1890
Bristol township
Surveyed in 1980





WISCONSIN
HISTORICAL
SOCIETY

CULTURAL RESOURCE PLANNING IN DANE COUNTY



Ingebrit Peterson house, 1857
Primrose township
Surveyed in 1997





WISCONSIN
HISTORICAL
SOCIETY

CULTURAL RESOURCE PLANNING IN DANE COUNTY



Tobacco barn, ca. 1910
Marvin McCoy farm
Burke township
Surveyed in 1993, 2002 DOT
surveys





WISCONSIN
HISTORICAL
SOCIETY

CULTURAL RESOURCE PLANNING IN DANE COUNTY



Dairy barn, ca. 1910
Mark Schneider farm
Burke township
Surveyed in 1993





WISCONSIN
HISTORICAL
SOCIETY

CULTURAL RESOURCE PLANNING IN DANE COUNTY



Corn crib, ca.1920
Burke township
Surveyed in 2020, 2022





WISCONSIN
HISTORICAL
SOCIETY

CULTURAL RESOURCE PLANNING IN DANE COUNTY



Joseph Stamm barn, ca. 1902
Roxbury township
Surveyed in 1979





WISCONSIN
HISTORICAL
SOCIETY

CULTURAL RESOURCE PLANNING IN DANE COUNTY



Cheese factory, ca. 1920
Springdale township
Surveyed in 1980





WISCONSIN
HISTORICAL
SOCIETY

CULTURAL RESOURCE PLANNING IN DANE COUNTY



Cheese factory, ca.1920
Dunn township
Surveyed in 1977





WISCONSIN
HISTORICAL
SOCIETY

CULTURAL RESOURCE PLANNING IN DANE COUNTY



Cheese factory, ca. 1925
Vermont township
Surveyed in 1979





WISCONSIN
HISTORICAL
SOCIETY

CULTURAL RESOURCE PLANNING IN DANE COUNTY



Lion's Club meeting hall, no date
Bristol township
No survey date, probably picked
up in a DOT survey



WISCONSIN
HISTORICAL
SOCIETY

CULTURAL RESOURCE PLANNING IN DANE COUNTY



Dyreson Road bridge, 1897
Dunn township
Surveyed in 1977, 2010





WISCONSIN
HISTORICAL
SOCIETY

CULTURAL RESOURCE PLANNING IN DANE COUNTY



Kehl Winery, 1858
Roxbury township
Surveyed in 1997





WISCONSIN
HISTORICAL
SOCIETY

CULTURAL RESOURCE PLANNING IN DANE COUNTY



Young's Riverside motel/restaurant
Roxbury township
Surveyed in 1979,1993





WISCONSIN
HISTORICAL
SOCIETY

CULTURAL RESOURCE PLANNING IN DANE COUNTY



St. Norbert's Catholic Church, 1866
Roxbury township
Surveyed in 1979





WISCONSIN
HISTORICAL
SOCIETY

CULTURAL RESOURCE PLANNING IN DANE COUNTY



Norway Grove Lutheran Church, 1931
Vienna township
Surveyed in 1979, 2014, 2022





WISCONSIN
HISTORICAL
SOCIETY

CULTURAL RESOURCE PLANNING IN DANE COUNTY



Reuter Store / Roxbury Tavern, 1969
Roxbury township
Surveyed in 1979



WISCONSIN
HISTORICAL
SOCIETY

CULTURAL RESOURCE PLANNING IN DANE COUNTY



Commercial building, ca. 1890
Springdale township
Surveyed in 1981





WISCONSIN
HISTORICAL
SOCIETY

CULTURAL RESOURCE PLANNING IN DANE COUNTY



Joint School District #3, ca. 1874
Roxbury township
Surveyed in 1979, 1993





WISCONSIN
HISTORICAL
SOCIETY

CULTURAL RESOURCE PLANNING IN DANE COUNTY



Deneen School, ca. 1925
Vermont township
Surveyed in 1979





WISCONSIN
HISTORICAL
SOCIETY

CULTURAL RESOURCE PLANNING IN DANE COUNTY



Vienna Town Hall, ca. 1900
Vienna township
Surveyed in 1979





WISCONSIN
HISTORICAL
SOCIETY

CULTURAL RESOURCE PLANNING IN DANE COUNTY

Conclusions:

1. Rural property types as expected:
 - Agricultural: Farms, farmhouses, farmsteads, barns, cheese factories
 - Religious: Churches, cemeteries, burial/effigy mounds
 - Civic: Schools, town halls
 - Infrastructure: bridges
 - Commercial: stores, taverns, motels
2. Data is old
3. Surveys are scattered, not comprehensive
4. Percentage of surveyed properties that get listed is listed in the NRHP is 2%, includes low-hanging fruit



WISCONSIN
HISTORICAL
SOCIETY

CULTURAL RESOURCE PLANNING IN DANE COUNTY

Jason Tish

Certified Local Government Coordinator
Wisconsin State Historic Preservation Office

jason.tish@wisconsinhistory.org – 608-264-6512

