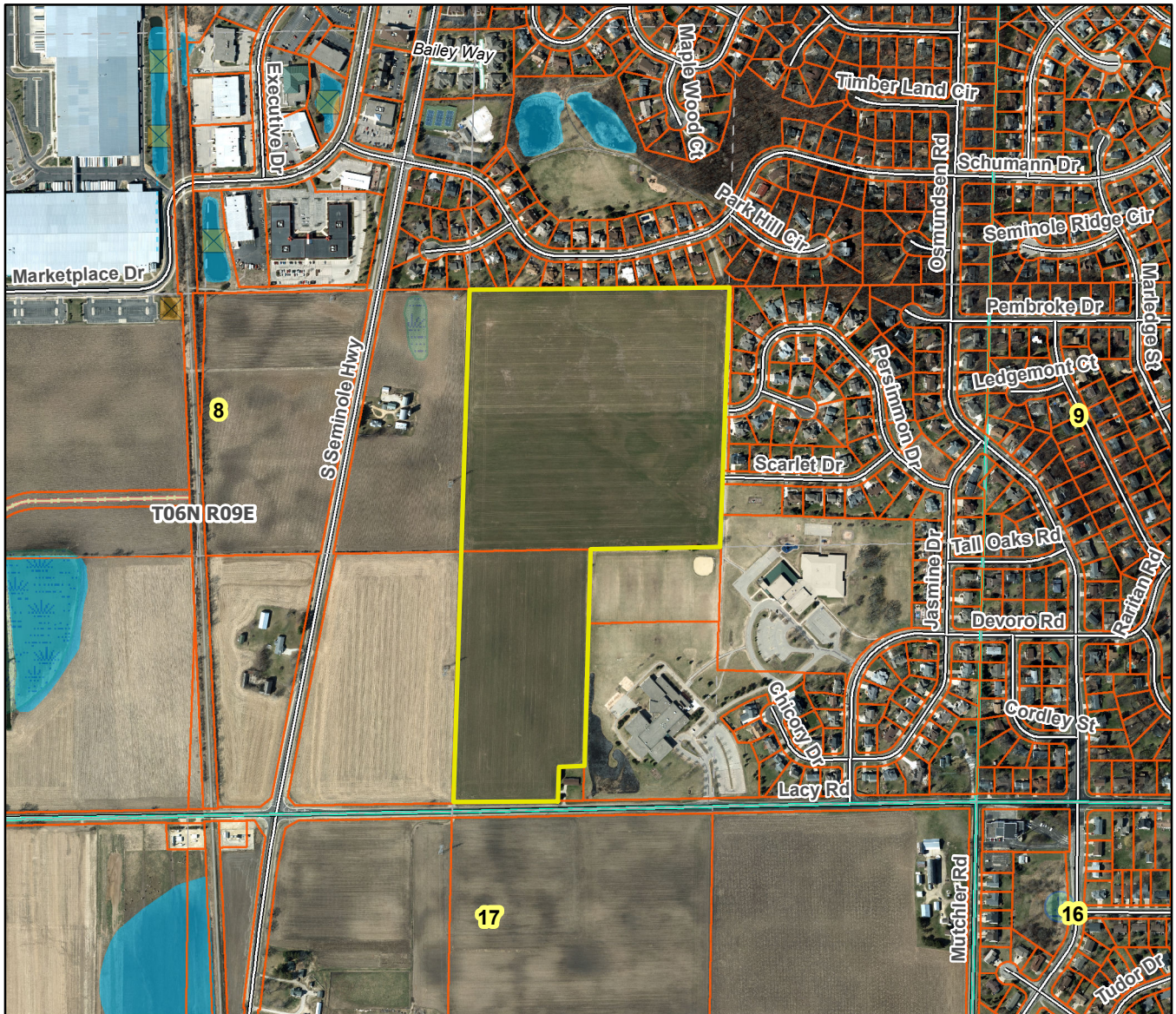


Stoner Prairie City of Fitchburg



Plat consists of 49 lots, 57.4 acres.

Parks – OL 1 dedicated to the public for park lands and pedestrian bike path. (2.86 acres)

Parkways – N/A

Expressways – N/A

Major Highways – South Seminole Hwy to the west.

Airports – Dane County Regional Airport (12 mi)

Drainage Channels – Drainage arrows shown represent direction of runoff.

Schools – Established and Stoner Elementary School to the east.

Other Planned Public Improvements: OL 2 reserved as future use.