

Final Plat - Smith's Crossing McCoy Addition

City of Sun Prairie

Plat consists of 113 lots, 45.6 acres.

Parks - OL 81 dedicated to the public for park purposes.

Parkways - O'Keefe Avenue (120' ROW)

Expressways - N/A

Major Highways - USH 151 to the north.

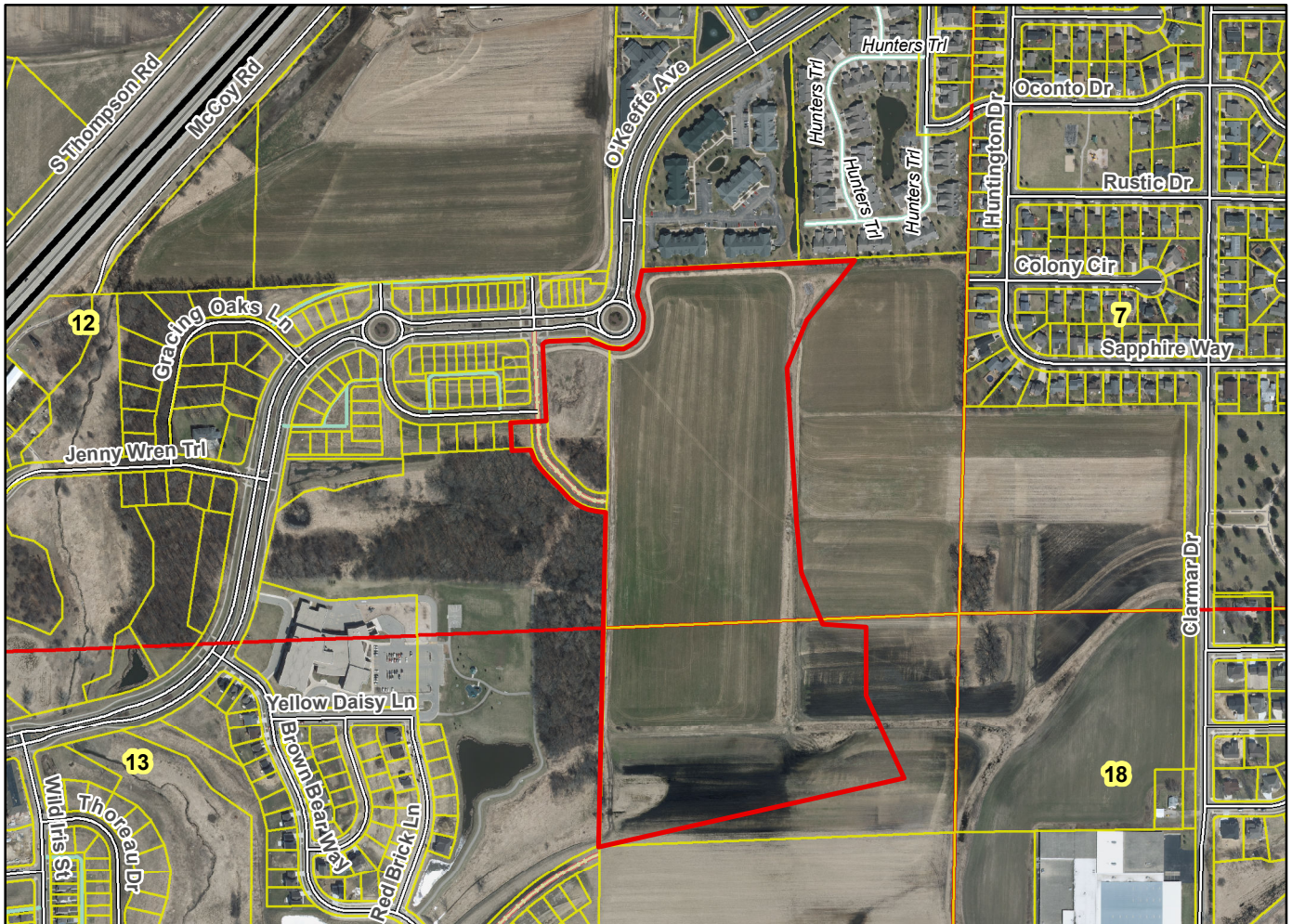
Airports - Dane County Regional

Drainage Channels - Drainage arrows are shown. OL 81 and 82 being dedicated to the public for stormwater management.

Schools - established

Other Development - N/A

Plats of subdivisions located in all other incorporated municipalities shall be submitted to the committee, as provided by section 236.12(2)(b) of the Wis. Stats., for the purpose of determining whether the committee has any objection to the plat. The basis for any objection to any such plat shall be that the plat conflicts with parks, parkways, expressways, major highways, airports, drainage channels, schools or other planned public developments.



Motion to certify with no objections: _____, Second: _____ Vote: _____