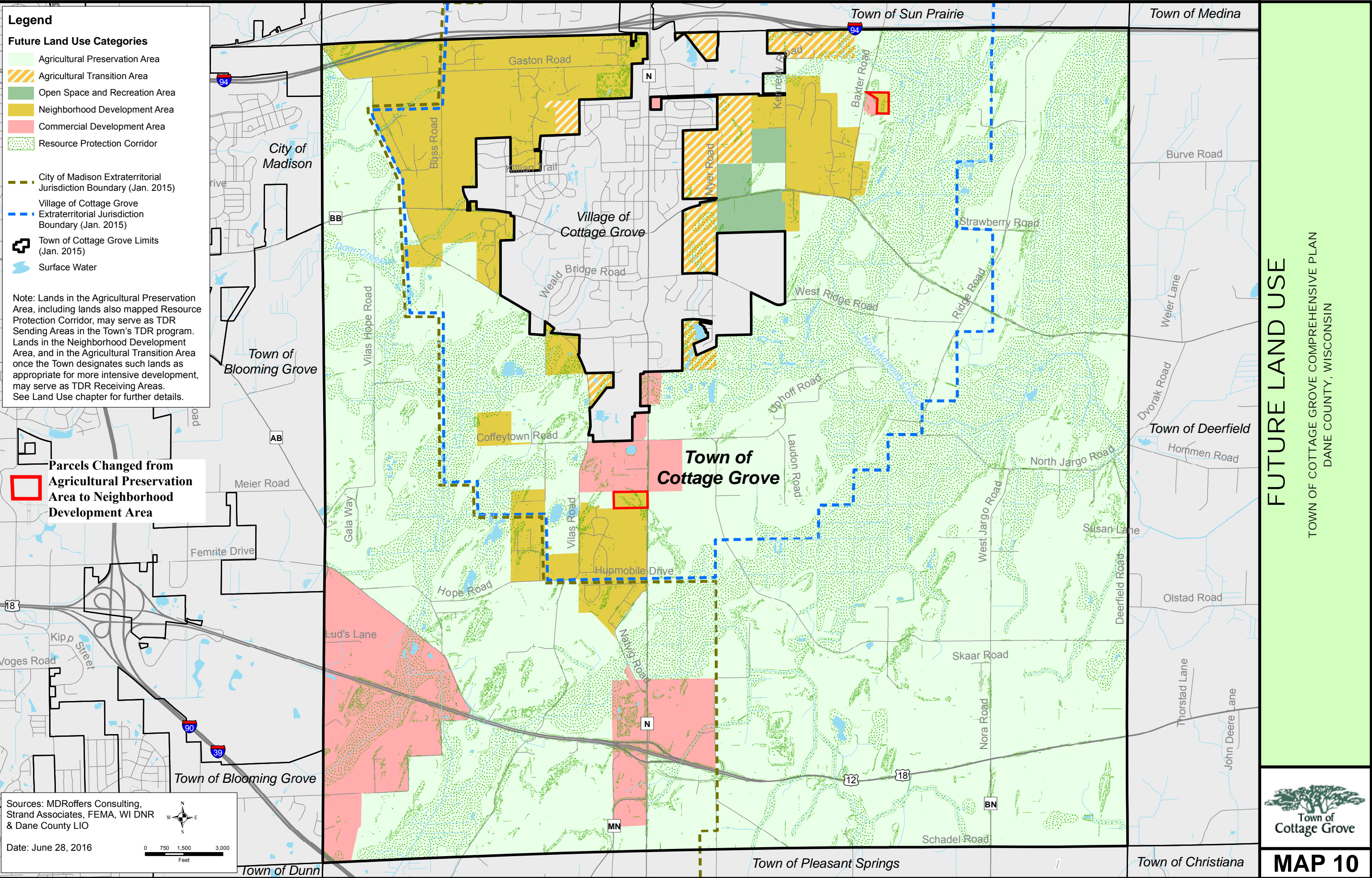


EXHIBIT A: MAP AMENDMENTS, COMPREHENSIVE PLAN, VISION AND DIRECTIONS VOLUME



**Legend**

**Future Land Use Categories**

- Agricultural Preservation Area
- Agricultural Transition Area
- Open Space and Recreation Area
- Neighborhood Development Area
- Commercial Development Area
- Resource Protection Corridor

City of Madison Extraterritorial Jurisdiction Boundary (Jan. 2015)

Village of Cottage Grove Extraterritorial Jurisdiction Boundary (Jan. 2015)

Town of Cottage Grove Limits (Jan. 2015)

Surface Water

Note: Lands in the Agricultural Preservation Area, including lands also mapped Resource Protection Corridor, may serve as TDR Sending Areas in the Town's TDR program. Lands in the Neighborhood Development Area, and in the Agricultural Transition Area once the Town designates such lands as appropriate for more intensive development, may serve as TDR Receiving Areas. See Land Use chapter for further details.

**Parcels Changed from Agricultural Preservation Area to Neighborhood Development Area**

(Red box symbol)

Sources: MDRoffers Consulting, Strand Associates, FEMA, WI DNR & Dane County LIO

Date: June 28, 2016

**FUTURE LAND USE**  
 TOWN OF COTTAGE GROVE COMPREHENSIVE PLAN  
 DANE COUNTY, WISCONSIN

**MAP 10**