

Final Plat - First Addition to Stoner Prairie

City of Fitchburg

Plat consists of 45 lots, 5 Outlots, 36.2 acres.

Parks - OL 5 dedicated to the public for park purposes.

Parkways - none

Expressways - N/A

Major Highways - South Seminole Highway to the west.

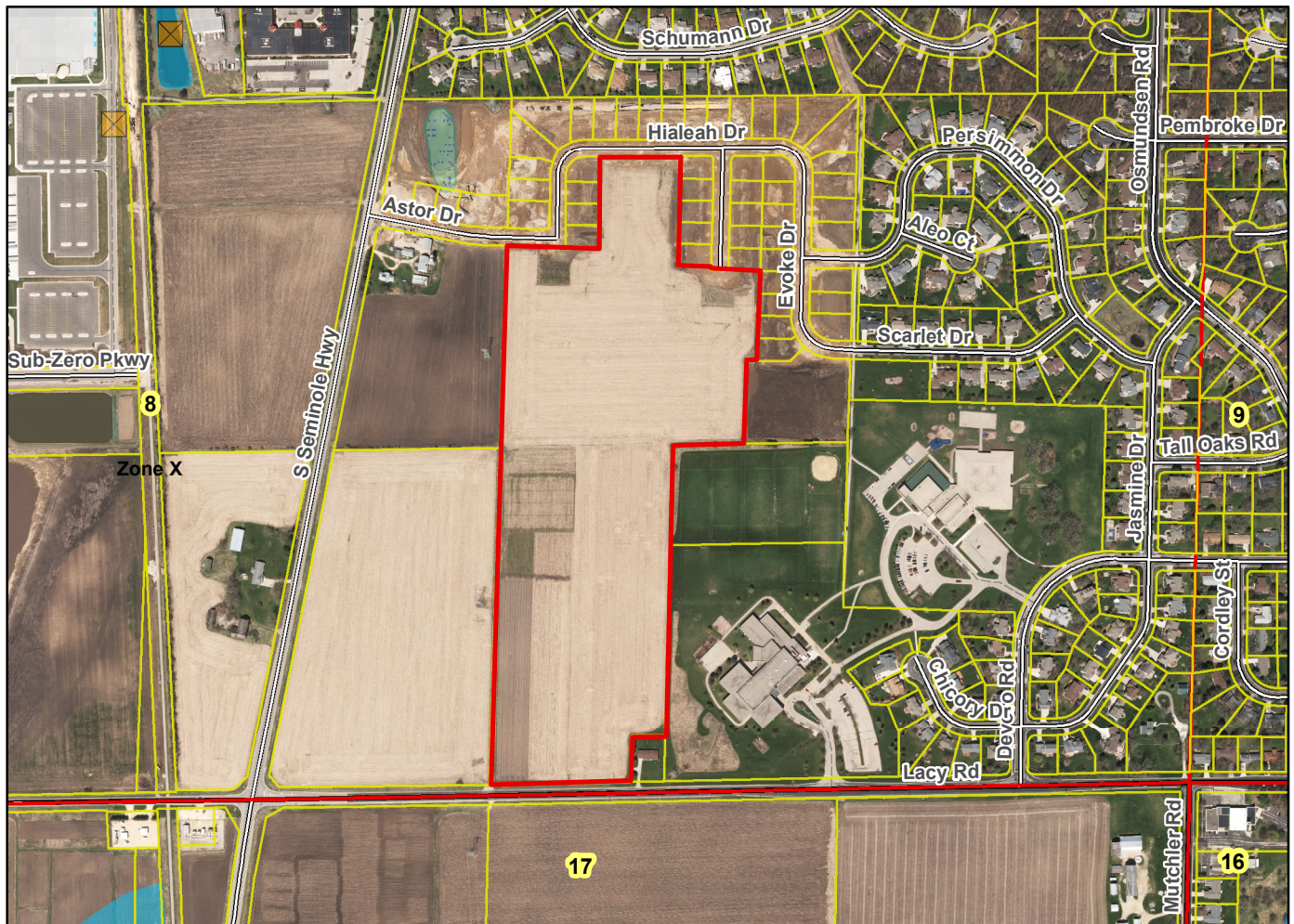
Airports - Dane County Regional

Drainage Channels - Drainage arrows shown indicate the direction of surface drainage swale at individual property lines. OL 7 is devoted for stormwater purposes.

Schools - established

Other Development - OL 6 is reserved for future development.

Plats of subdivisions located in all other incorporated municipalities shall be submitted to the committee, as provided by section 236.12(2)(b) of the Wis. Stats., for the purpose of determining whether the committee has any objection to the plat. The basis for any objection to any such plat shall be that the plat conflicts with parks, parkways, expressways, major highways, airports, drainage channels, schools or other planned public developments.



Motion to certify with no objections: _____, Second: _____ Vote: _____