

# Final Plat - Southern Addition to Birchwood Point

## City of Madison

Plat consists of 213 lots, 18 Outlots, 66 acres.

**Parks** - OL 12 and 28 dedicated to the public for park purposes.

**Parkways** - none

**Expressways** - N/A

**Major Highways** - CTH S (Mineral Pt. Rd.) to the north.

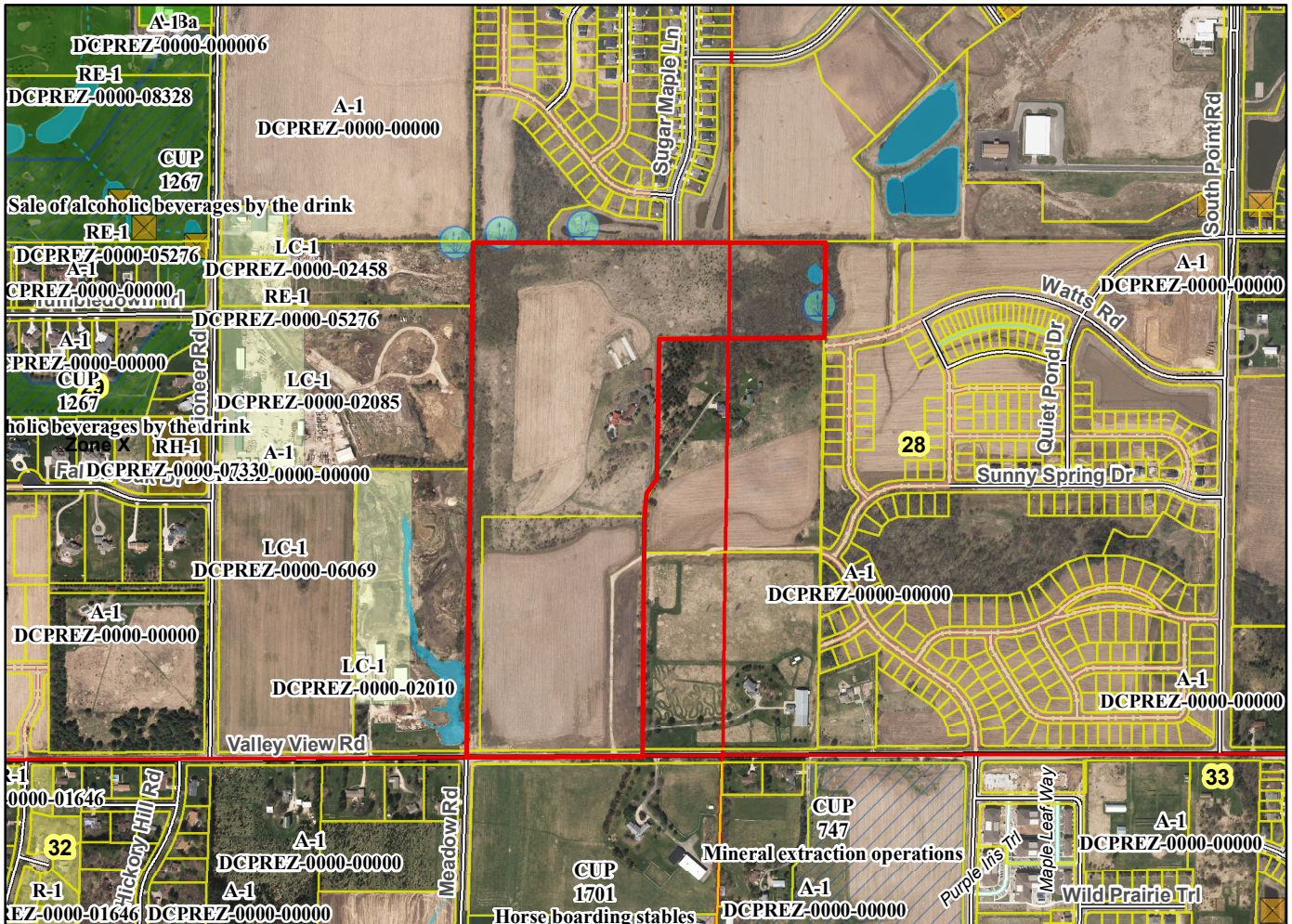
**Airports** - Dane County Regional

**Drainage Channels** - All lots subject to public easements for drainage purposes.

**Schools** - established

**Other Development** - OL 13 dedicated to the public for bike path purposes.

Plats of subdivisions located in all other incorporated municipalities shall be submitted to the committee, as provided by section 236.12(2)(b) of the Wis. Stats., for the purpose of determining whether the committee has any objection to the plat. The basis for any objection to any such plat shall be that the plat conflicts with parks, parkways, expressways, major highways, airports, drainage channels, schools or other planned public developments.



Motion to certify with no objections: \_\_\_\_\_, Second: \_\_\_\_\_, Vote: \_\_\_\_\_