



This summary report highlights a few programs or projects that Dane County Extension Educators worked on this past month to provide just a sample of the type and breadth of programming offered. Also included are staffing updates, upcoming events, and a 4-H program impact report. If you would like more information on any of our programs, please contact us or visit our [website](#).

Carrie Edgar
Carrie Edgar, Director

Staff Updates



Leo Muñoz joined the Dane County FoodWise team on September 8 as a Bilingual Spanish Nutrition Educator. Leo’s focus within the Expanded Food and Nutrition Education Program (EFNEP) includes working with youth, teens, and parents/families. Leo holds a B.A. in Creative Writing from New College of Florida. Beyond his nutrition expertise, Leo is a talented artist, crafting captivating comics and watercolor paintings inspired by his passions for paleontology and his home state of Florida. In his downtime, Leo is an avid birder, a dedicated community gardener, and an adventurous culinary enthusiast, always on the hunt for exciting new recipes to try.



Claire Strader started on Sept 8 as the Dane County Extension Deputy Director. As the Organic Vegetable Extension Educator since 2013, Claire is a familiar face in the County and Extension. She has secured and managed 17 grants totaling more than \$2 million dollars in addition to coordinating a variety of educational programs, the annual Organic Vegetable Conference, numerous field days, and her research projects. Prior to joining Extension, Claire served as the Farm Director for Rooted, Inc. for 12 years where she was responsible for overall management of the farm and facilities including program budgeting and financial management and supervised 3 permanent and 15 seasonal employees. Claire also previously served as the Human Resources Manager for Willy Street Coop for 3+ years where she was responsible for hiring, onboarding, payroll, benefits administration, and coordinating performance evaluations for 110 employees.

Agriculture

Alison Pfau, Regional Dairy Educator, has developed the Dairy Spanish Webinar El “Break” Info-Lechero webinar series to provide Spanish-speaking dairy workers and the dairy industry the most current research information. This webinar will be presented in Spanish and will include a variety of dairy topics covering reproduction, colostrum management, fresh cow management, milk quality and more. To learn more and register visit: <https://dairy.extension.wisc.edu/2023/08/01/dairy-spanish-webinar-el-break-info-lechero/>

Alison also has an active Instagram account you might want to check out. You can find her [@cowscope_dairyextension](#)

EL "BREAK" INFO-LECHERO
Spanish Webinar celebrating the National Hispanic Heritage Month
Time: 12pm CST
SAVE THE DATES

- September 20: Milk Quality
- September 27: Colostrum Management
- October 4: Animal Welfare
- October 11: Reproduction

For more information, please contact:
Alison Pfau - Regional Dairy Educator
alison.pfau@wisc.edu
Telephone: 608.232.4773
Se habla español

Register now

Health and Well-being

Claire Mance, Healthy Community Coordinator, led a series of workshops with a Madison childcare center where staff learned about the benefits of outdoor play and learning environments for children and were guided through collaborative activities. The purpose of these workshops is to support staff in designing the outdoor space for their future permanent site in a way that will maximize the health benefits of young children.

Emily Randerson and **Kelsi Salm**, FoodWise Nutrition Educators taught a series of Strong Bodies strength-training and nutrition lessons for older adults, where participants gain strength and flexibility, learn the importance of physical activity and are aware of how to eat more healthfully to increase their independence with activities of daily living.

Human Development and Relationships

Kula Yang, Family Relationships and Financial Security Educator, provided a professional development workshop for RISE staff where they learned about play, the benefits of play, and the different play skills staff can utilize and observe while working with parents and children. The purpose of the training is to increase their knowledge on play, and the beneficial impact it can have on parent-child bond when they interact with families in-home settings.

Positive Youth Development



Nadia Alber and **Lisa Curley**, 4-H Educators along with the 4-H Youth Ambassadors planned and coordinated a day camp for 4-H Cloverbud Campers (youth in 5K-2nd grade) in August. The heat did not stop these youth from enjoying activities related to the four elements of fire, water, earth and air at Schumacher Farm Park. In fact, the solar ovens worked in record time to melt the s'mores - yum! Thanks to our fantastic 4-H Youth Ambassadors who led fun group activities and songs. We will have more Cloverbud events this year. More info at danecounty4h.org.

Taylor Seale, Community Youth Development Educator, finalized planning efforts for the upcoming By Youth For Youth 2023-2024 cohort. The By Youth For Youth (BYFY) program is a local committee comprised of high school youth where they identify public health issues facing youth and funding priorities to be supported by County and City grants. BYFY provides an opportunity for youth to identify and support with funding, projects developed and implemented by youth to serve youth. Planning efforts include reducing access barriers for youth across Dane County to participate, including transportation and financial assistance.

Upcoming Events

- [Retirement Planning Today](#)
- [Soils, Composting and Fertilizers](#)
- [Managing Your Child's Emotion](#)
- [Fall Planted Bulbs for Spring Blooming Flowers](#)
- [Dairy Spanish Webinar El "Break" Info-Lechero](#)
- [4-H Science Fright Night](#)
- [Online Parenting Classes](#)

Visit our [website](#) to learn more about Extension and other upcoming program opportunities.



Dane County 4-H Program

Provides positive youth/adult relationships, a welcoming atmosphere, and a place for youth to explore their interests and passions – their sparks!



Situation: The 4-H Thriving model predicts that youth who participate in 4-H programs that provide a high quality developmental context will thrive, and thriving youth achieve key developmental outcomes, including vocational success, civic engagement, economic stability and well-being. Dane County 4-H Members between the ages of 13-19 complete a Thriving Survey annually. The Program Quality scores confirm high quality programming with an average score of 5.6 on a scale of 1-7. Sparks had the lowest score of 5.1 and the most opportunity for growth.

Response: Dane County 4-H staff developed collaborations with a variety of UW-Madison colleagues to provide youth with opportunities to visit campus and spark interest in new areas of learning. Program highlights include a mock disease outbreak scenario at the Wisconsin Veterinary Diagnostic Laboratory, science experiments at the Biotechnology Center, engaging Fright Night STEM activities and a radio astronomy workshop at UW Space Place, hands-on animal activities at the School of Veterinary Medicine, and a visit to the Babcock Dairy Store.

Results: 160 youth visited UW-Madison campus facilities through participation in these events and reported:

- They learned something new
- They felt welcome and included
- They connected with UW-Madison faculty and staff members

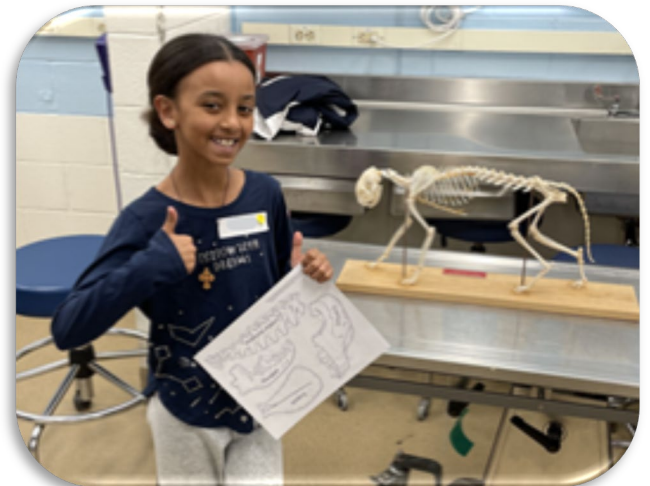
Dane 4-H & UW Madison Collaborations

- UW Biotechnology Center
- UW Neuroscience Training Program
- UW Radio Astronomy Department
- UW School of Veterinary Medicine
- UW Space Place
- Veterinary Medical Outreach Organization
- Wisconsin Veterinary Diagnostics Laboratory

Extension prepares the youth of today to become the effective, empathetic adults of tomorrow. Our research-based youth enrichment programs build youth and adult capacity and partnerships that help both sides grow. 4-H clubs, camps and afterschool programs give young people the hands-on experiences they need to develop an understanding of themselves and the world.



Clarity, a Dane County 4-Her, worked with UW-Madison Biotechnology Center and Animal Science faculty to create a PCR chicken sexing test and presented her findings locally at Small Animal Education Day and at Summer Academy, a state-wide 4-H conference.



To learn more about Dane County 4-H visit:
<https://dane.extension.wisc.edu/13983-2/>



An EEO/AA employer, University of Wisconsin-Madison Division of Extension provides equal opportunities in employment and programming, including Title VI, Title IX, the Americans with Disabilities Act (ADA) and Section 504 of the Rehabilitation Act requirements.