



Friends' Mission



"Provide a living history museum representative of the 1920s-1930s depression era that offers a representation of Dane County's heritage through preservation, restoration, education and nature conservancy."



Board of Directors and Staff

Board of Directors

- Mark Pelton - President & Advisory Board Liaison
- Sue Manske - Vice President
- Connie Gavinski - Treasurer
- Rebecca Ressler - Secretary
- Gary Herzberg - Buildings & Grounds Chair

Staff

- Nelle Kempfer – SFP Administrator
- Amanda Sherer - Office Administrator
- Dennis Petzke – Facilities Lead



Partners

- Dane County Parks
- Marcella Schumacher Pendall Trust
- Friends' Advisory Board
- Friends' Members, Donors and Volunteers



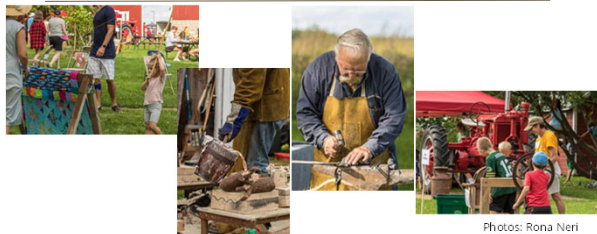
Major Events 2022 Music Fest - 100 attendees



Photos: Sue Manske



Major Events 2022 Heritage Fest - 284 attendees



Photos: Rona Neri



Major Events 2022 Waunakee Artisan Market - est. 800 attendees (collaboration with Create Waunakee)



Photos: Rona Neri

SCHUMACHER FARM PARK
Dane County Parks

Major Events 2022

Family Halloween - 1412 attendees

Photos: Kona Neri

SCHUMACHER FARM PARK
Dane County Parks

Workshops & Other Events

- Maple Sap
- Barn Quilt Painting
- Nature Photography
- Christmas Centerpiece
- Holiday Wreath Making
- Women's Wellness
- Lefse Making
- Cheesemaking
- Old Tool Refurbishing
- Line Dancing
- Woodstove Cooking
- Chicken Wrangling
- Aluminum Pour Mold Making
- Butterfly Conservation
- Butterfly Garden Design
- Archery (in partnership with Waunakee Village Center)

Photos from L to R: Lefse Making (photo: Mark Pelton), Christmas Centerpiece (photo: Sue Manske), Women's Wellness (photo: Amanda Sherer)

SCHUMACHER FARM PARK
Dane County Parks

Family Outings

Snow Day at the Farm
Springtime at the Farm
Moths & Stars Evening Outing

Farm Explorers series (partnership with Waunakee Village Center Recreation Dept.)

Left: Snow Day on the Farm, Springtime on the Farm (photos: Sue Manske) Right: All About Birds farm explorer workshop (photo: Dennis Petzke)

SCHUMACHER FARM PARK
Dane County Parks

Farmhouse

- Christmas Teas
- House Tours
- Woodstove Cooking
- Jerry Apps Food and Memories on PBS Wisconsin

SCHUMACHER FARM PARK
Dane County Parks

Granary Displays

Three areas in granary display kitchen, laundry and feed-related artifacts with signage.

Jackson Kaberle Eagle Scout project →

SCHUMACHER FARM PARK
Dane County Parks

Volunteer Workdays

- Natural areas restoration
- Heirloom garden maintenance

Participating community groups: (290 hours)

- Operation Fresh Start
- Blackhawk Church
- Edgewood High School
- SSM Health
- Exact Sciences
- Madison Diocese (Love Begins Here)

And individual volunteers that put in over 180 hours!

Above: SSM Health group helping decorate the Farmyard for Halloween. (Photo: Mark Pelton)

SCHUMACHER FARM PARK
Dane County Parks

Volunteer Appreciation Picnic

286 volunteers logged over 2,900 hours




Photo: Amanda Sherer, Graphic: Developed in Excel by AJ Dusick

SCHUMACHER FARM PARK
Dane County Parks

Grounds Projects

- New Hwy 19 signage for CRH/park entrance
- Boy Scout projects - Storywalk, Leopold benches
- Tuck pointed Historic Barn
- Stained picnic tables & benches
- Painted Hog House roof
- Built storage under stairs of Historic Barn
- Landscaped around CRH, seeded grass
- Built new sandbox
- Installed sleeves in parking area for posts
- Removed steel posts, barbed wire, and brush along Hwy 19
- Removed downed trees and branches from woods near Farmhouse
- Repaired and stained wagons
- Pruned the Schumacher Orchard
- Planted pumpkins, sweet corn & sunflowers





Photo credit: above left: Gary Hertzberg, top right: Amanda Sherer, bottom right: Dennis Fetzke

SCHUMACHER FARM PARK
Dane County Parks

Mural Completion

Dedication in May 2022





Photos: Sue Manske

SCHUMACHER FARM PARK
Dane County Parks

Facility Rentals

Center for Rural History

- Meetings, retreats
- Reunions
- Weddings and receptions
- Photography special sessions
- Graduation parties
- Birthday parties
- 4-H summer camp
- WHS orchestra retreat

Farmyard & Historic Barn

- Graduation parties
- Eagle Scout ceremonies
- Birthday parties



Photo: Rona Neri

SCHUMACHER FARM PARK
Dane County Parks

2023 Plans

- Revitalize field trips for school kids
- Expand outreach to surrounding communities
- Pocket Sites tour
- Farmhouse porch restoration
- Antique Machinery Storage and Display Building



Photo: Sue Manske

SCHUMACHER FARM PARK
Dane County Parks

2023 Plans: Revitalize field trips for school kids and expand outreach to surrounding communities

- Hosting 134 Windsor 3rd graders for fieldtrips on May 17, 18 & 19
- Advertise Schumacher events in the Northside News, reach out to neighborhood centers to promote events, help remove participation barriers
- Hosted a free birdhouse building workshop for the kids from Vera Court in Feb., 2023






2023 Plans:
Farmhouse Porch Restoration

Project cost: \$15,352
 Applied for a Friends of Dane County Parks Capital Grant to cover 50% of the cost

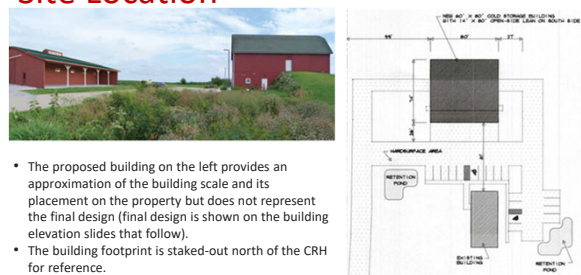


NORTH PORCH RESTORATION SOUTH PORCH RESTORATION

Schumacher Farm Park
Antique Machinery Storage & Display Building



Site Location

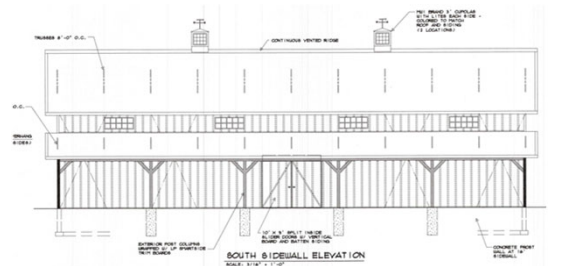


- The proposed building on the left provides an approximation of the building scale and its placement on the property but does not represent the final design (final design is shown on the building elevation slides that follow).
- The building footprint is staked-out north of the CRH for reference.

Specifications

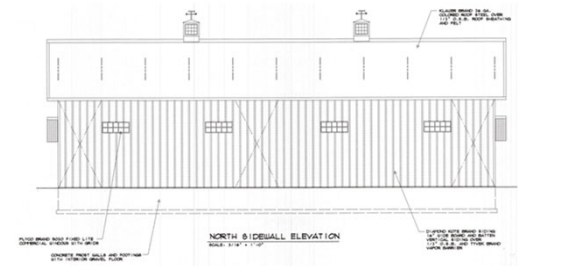
- 60' x 80' (4,800 S.F. building with 14' x 80' 1,120 S.F. open-side lean) 5,920 S.F. total area.
- Building inside clearance (floor to rafters): 16'
- Wood frame construction
- Steel roof over 1/2" O.S.B and felt
- LP Brand Diamond Kote vertical board & batten siding
- 1/2" O.S.B. exterior wall sheathing with Tyvek vapor barrier
- 8" concrete frost wall
- 6" compacted gravel floor

South Sidewall Elevation

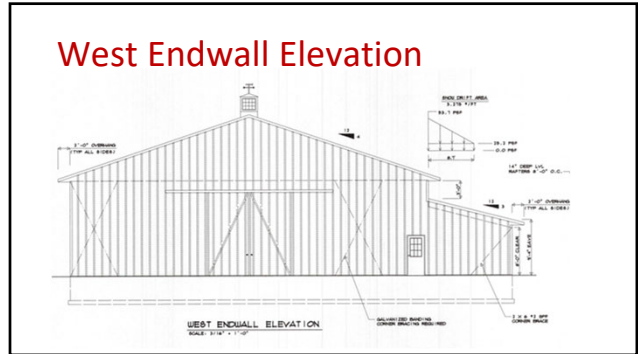
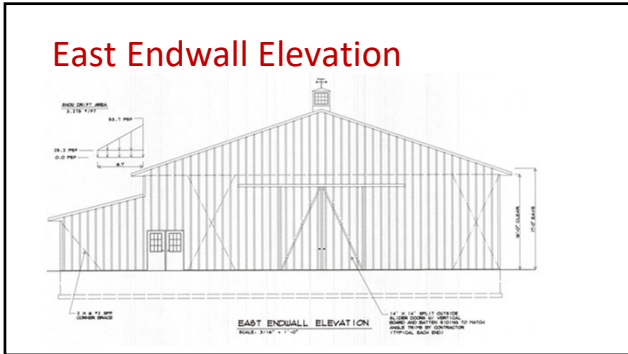


SOUTH SIDEWALL ELEVATION
 SCALE: 1/4" = 1'-0"

North Sidewall Elevation



NORTH SIDEWALL ELEVATION
 SCALE: 1/4" = 1'-0"



Cost, Funding & Project Approval Status

- Total project cost: \$331,000
- Cash on-hand plus pledges as of April 25, 2023: \$236,000
- Balance needed to fully-fund the project: \$95,000
- The Friends are working closely with the Dane County Land and Water Resources Department on final approval and permitting
- We hope to begin construction in July of 2023