

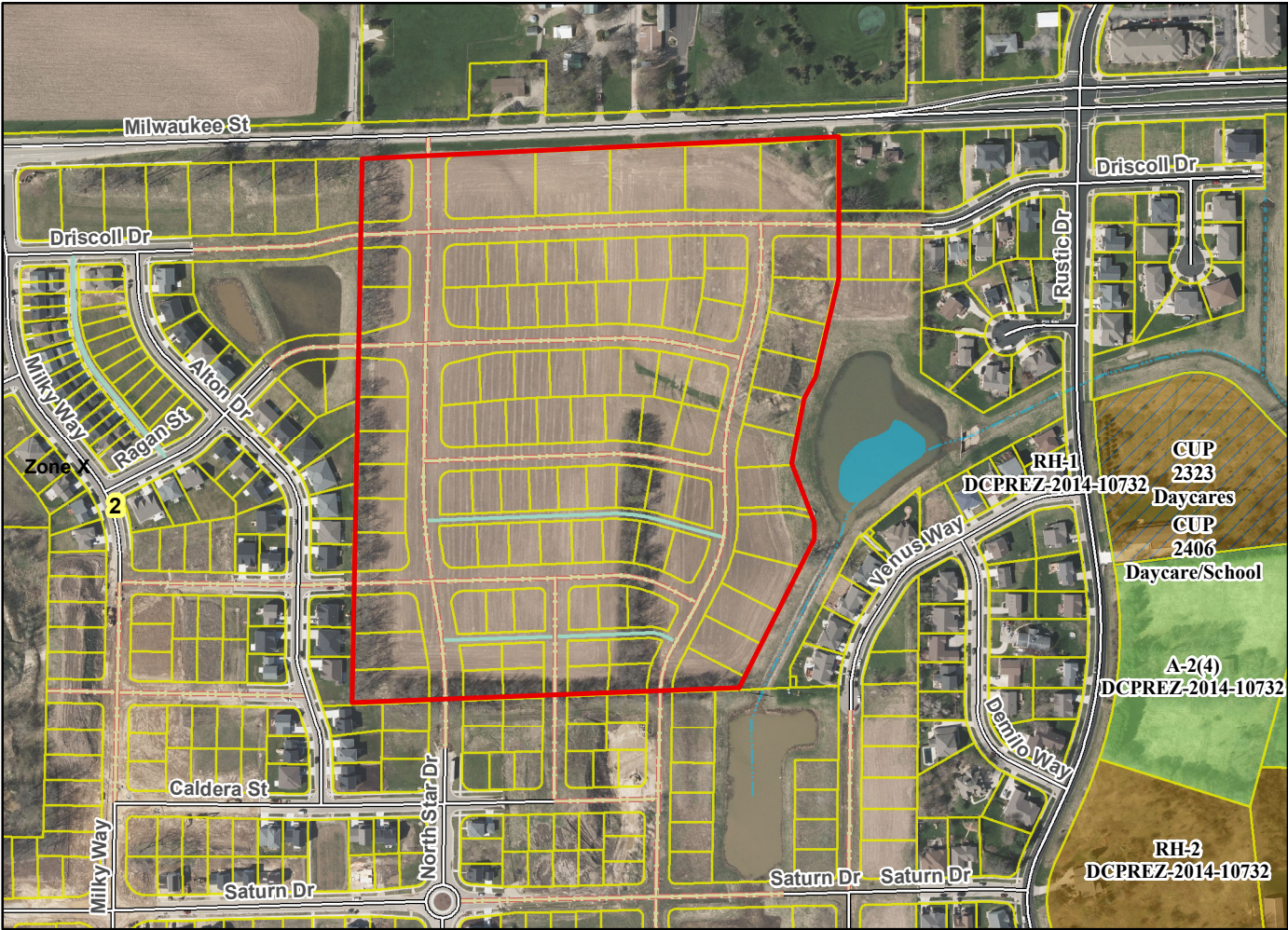
Final Plat - Northeast Addition to Grandview Commons

City of Madison

Plat consists of 151 lots, 6 Outlots, 31.6 acres.

- Parks - No parkland shown.
- Parkways - none
- Expressways - N/A
- Major Highways - Milwaukee St. to the north.
- Airports - Dane County Regional
- Drainage Channels - OL 52 & 53 dedicated to the public for stormwater management and all lots are subject to public easements for drainage purposes..
- Schools - established
- Other Development -

Plats of subdivisions located in all other incorporated municipalities shall be submitted to the committee, as provided by section 236.12(2)(b) of the Wis. Stats., for the purpose of determining whether the committee has any objection to the plat. The basis for any objection to any such plat shall be that the plat conflicts with parks, parkways, expressways, major highways, airports, drainage channels, schools or other planned public developments.



Motion to certify with no objections: _____, Second: _____, Vote: _____